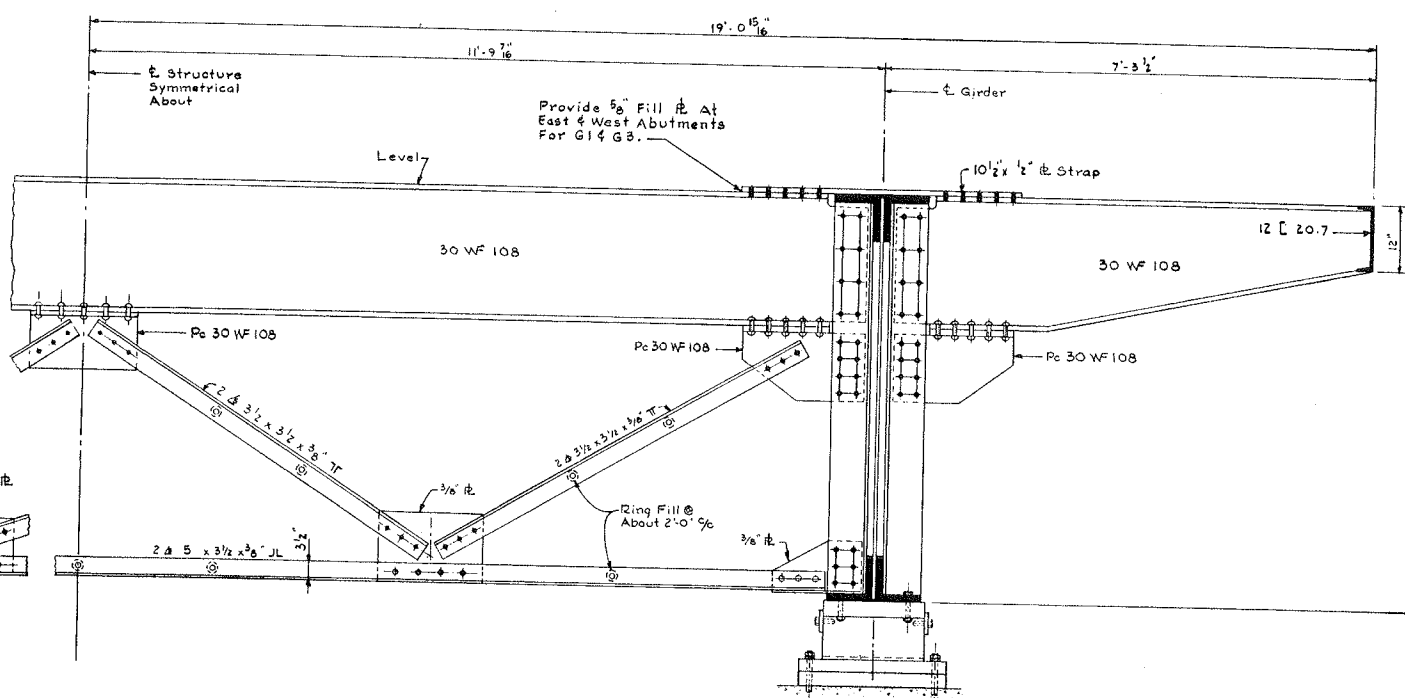
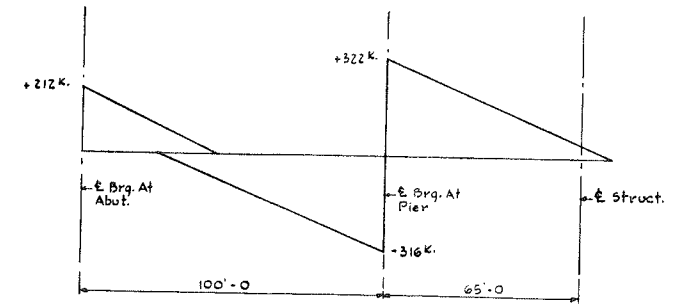


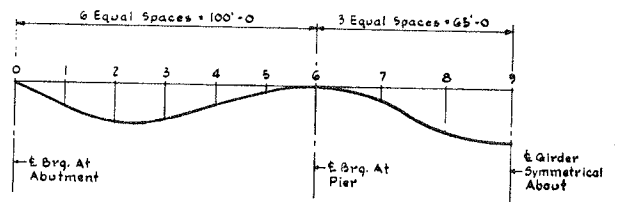
HALF CROSS SECTION A-A (WITH CROSS FRAME)  
 HALF CROSS SECTION B-B (WITHOUT CROSS FRAME)  
 Scale: 3/4" = 1'-0"



HALF CROSS SECTION C-C  
 Scale: 3/4" = 1'-0"



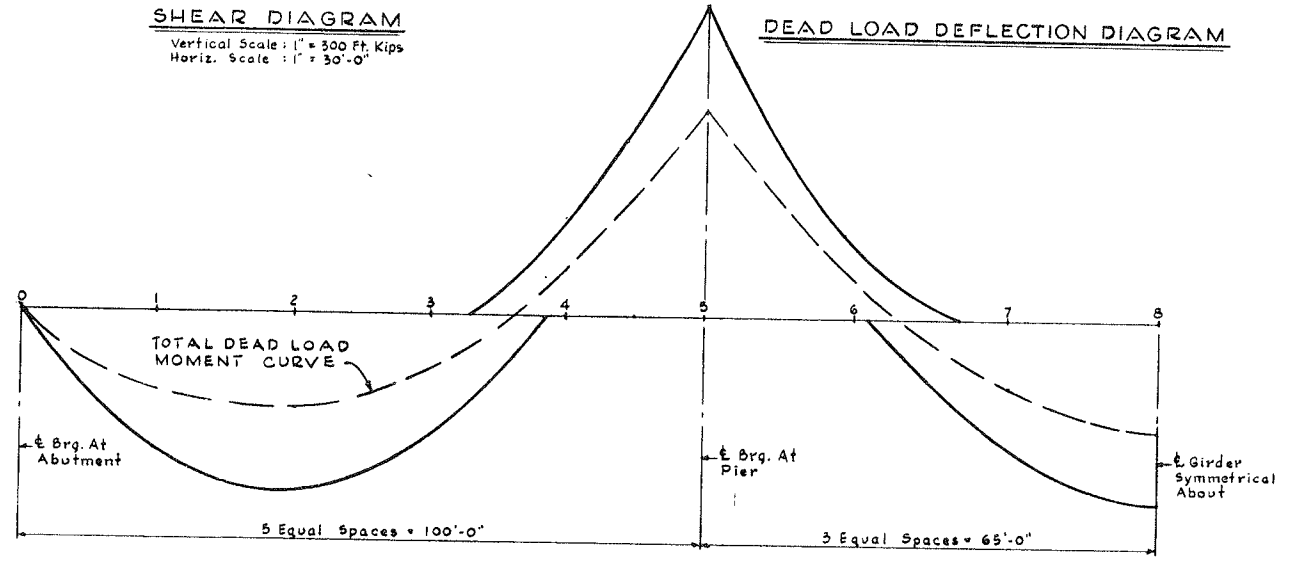
SHEAR DIAGRAM  
 Vertical Scale: 1" = 500 Ft. Kips  
 Horiz. Scale: 1" = 30'-0"



DEAD LOAD DEFLECTION DIAGRAM

POINT GIRDER	1	2	3	4	5	6	7	8	9
G1	1/2"	3/8"	3/4"	7/16"	5/8"	0	1/4"	1"	1 1/2"
G2	1/2"	3/8"	3/4"	7/16"	5/8"	0	1/4"	1"	1 1/2"

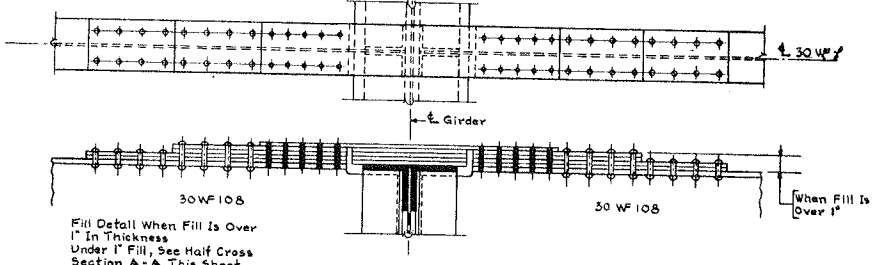
GIRDER	+M SPAN L <sub>1</sub>	-M R <sub>B</sub>	+M SPAN L <sub>2</sub>
G1	3850	6930	4070
G2	3850	6930	4070



COMBINED MOMENT DIAGRAM  
 D.L. + L.L. + I.  
 Vert. Scale: 1" = 2000 Ft. Kips

GIRDER NO.	LOCATION	E BRG. W. ABUT.	E BRG. PIER #1	E BRG. PIER #2	E BRG. E. ABUT.
G1	TOP OF SLAB	713.06	712.56	711.91	711.41
	TOP OF STEEL	712.23	711.73	711.08	710.58
G2	TOP OF SLAB	713.01	712.51	711.86	711.36
	TOP OF STEEL	712.18	711.68	711.03	710.53
G3	TOP OF SLAB	712.90	712.40	711.75	711.25
	TOP OF STEEL	712.07	711.57	710.92	710.42
G4	TOP OF SLAB	712.85	712.35	711.70	711.20
	TOP OF STEEL	712.01	711.51	710.86	710.36

Elevations Given To Back Of Top Flange Angles At E Of Bearings.



DETAIL - A  
 Scale: 3/4" = 1'-0"

NOTES:  
 See Sht. 2 For General Notes.  
 Girders Shall Be Cambered For D.L. Deflection.  
 Work This Sheet With Sheets 12, 14, & 15.

**FOR INFORMATION ONLY**

ILLINOIS DIVISION OF HIGHWAYS  
 ROCKFORD BYPASS  
 F. A. ROUTE 194  
 PROJECT \_\_\_\_\_ SECTION 3.B  
 WINNEBAGO COUNTY  
 DESIGN DATA AND  
 CROSS FRAMES  
 Designed By E.S. Brown By G.W.G. Checked By J.P.P.