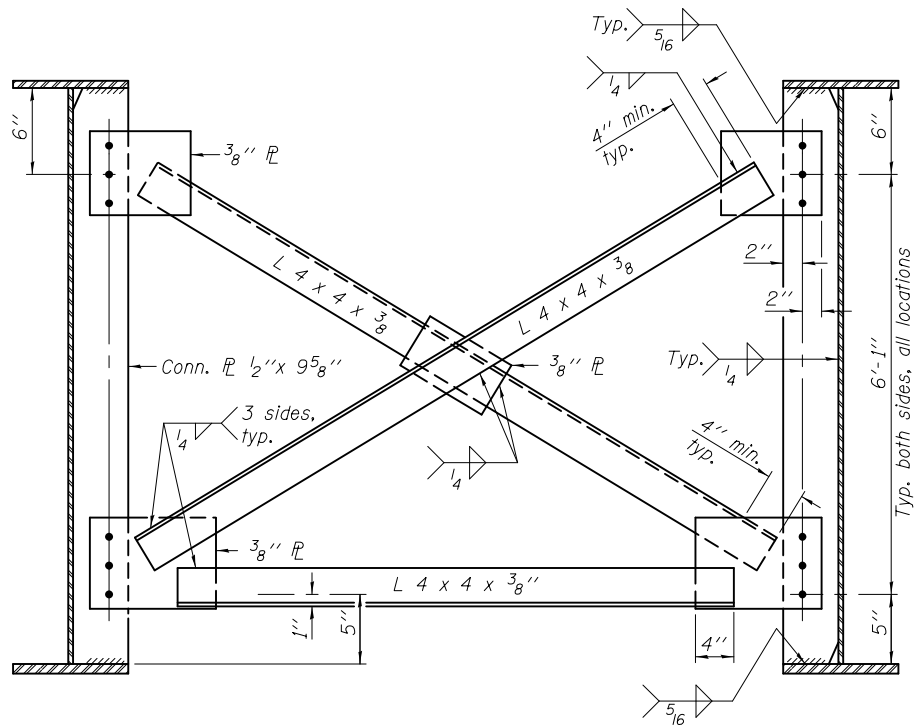
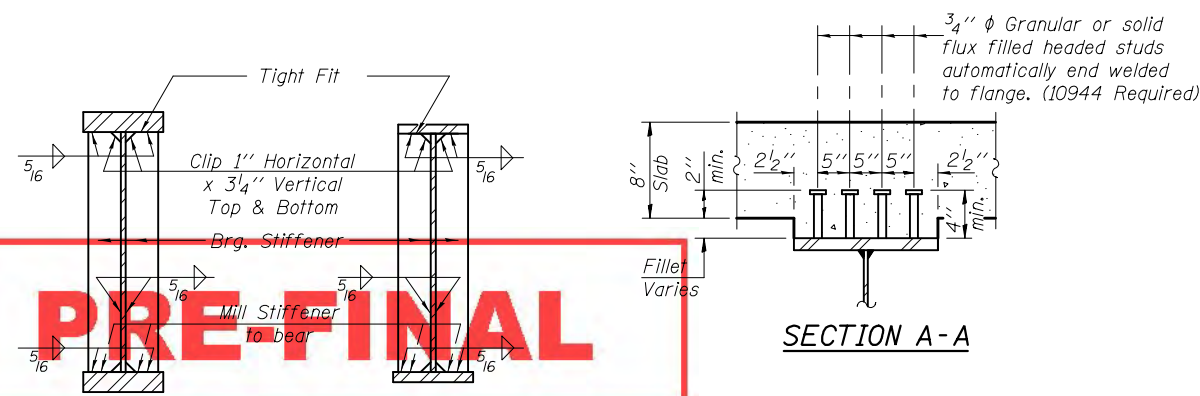
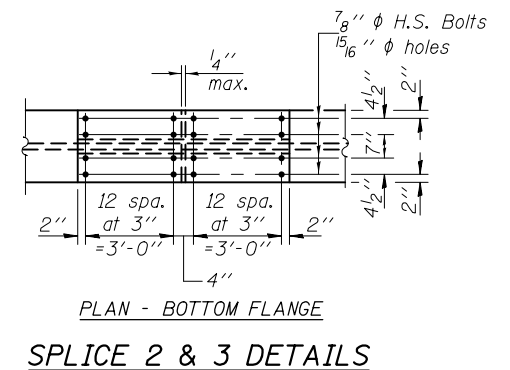
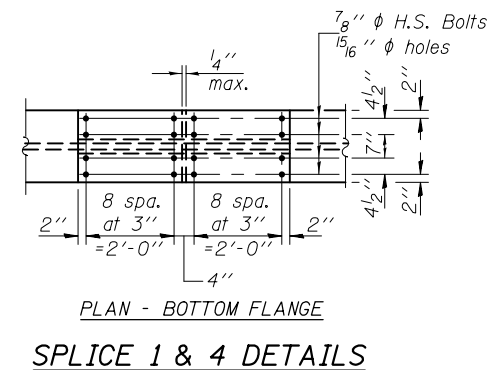
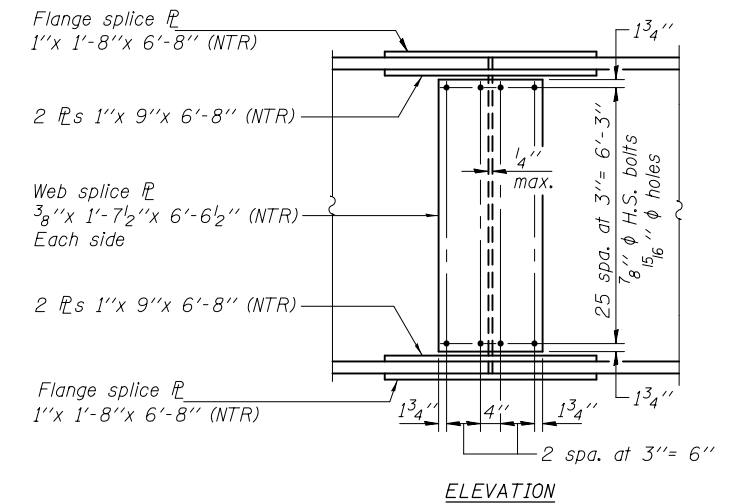
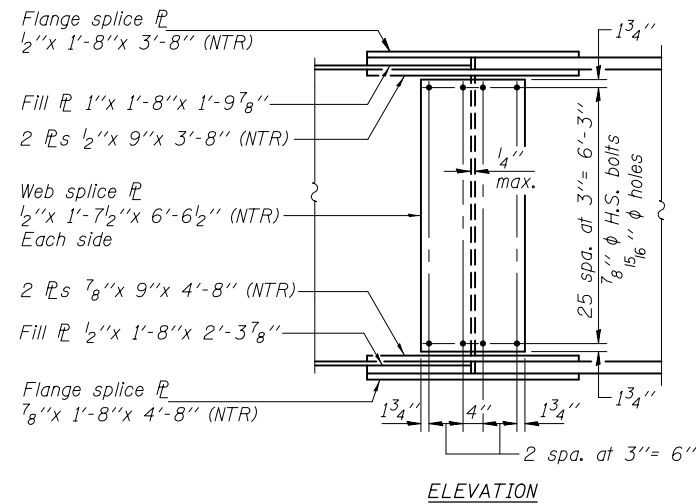
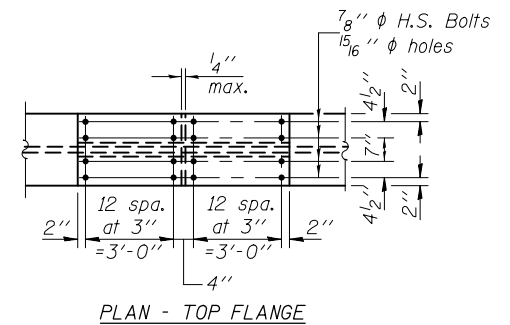
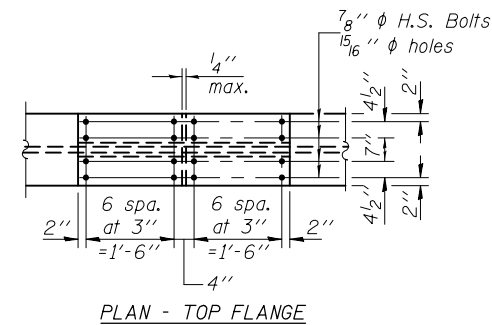


**CROSS FRAME CF**  
(20 Required)



**CROSS FRAME CF1**  
(170 Required)



**SECTION AT PIER**      **SECTION AT ABUTMENT**

Notes: Load carrying components designated "NTR" shall conform to the Impact Testing Requirement, Zone 2. Use 3/4" H.S. bolts with 15/16" holes in CF and CF1. Two hardened washers required for each set of oversized holes. Place cross frame with channel flanges and outstanding angle legs outward from abutment backwall. Omit connecting plates on exterior side of exterior girder. All splice plates except filler plate shall be AASHTO M 270 Gr. 50.

DESIGNED - Nick R. Barnett	EXAMINED - <i>Joanne F. [Signature]</i>	DATE -	<b>STATE OF ILLINOIS DEPARTMENT OF TRANSPORTATION</b>	<b>STRUCTURAL STEEL DETAILS STRUCTURE NO. 101-0197 (E.B.) &amp; 101-0198 (W.B.)</b>	F.A.P. RTE. 301	SECTION 3BR & 3BR-1	COUNTY WINNEBAGO	TOTAL SHEETS	SHEET NO.
CHECKED - Frank W. Sharp	PASSED - <i>Carl [Signature]</i>	REVISED			CONTRACT NO. 64D19				
DRAWN - h.t. duong		REVISED			ILLINOIS FED. AID PROJECT				
CHECKED - NRB/FWS/GRA					SHEET NO. 28 OF 50 SHEETS				