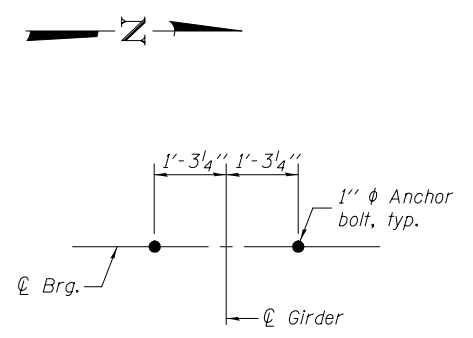
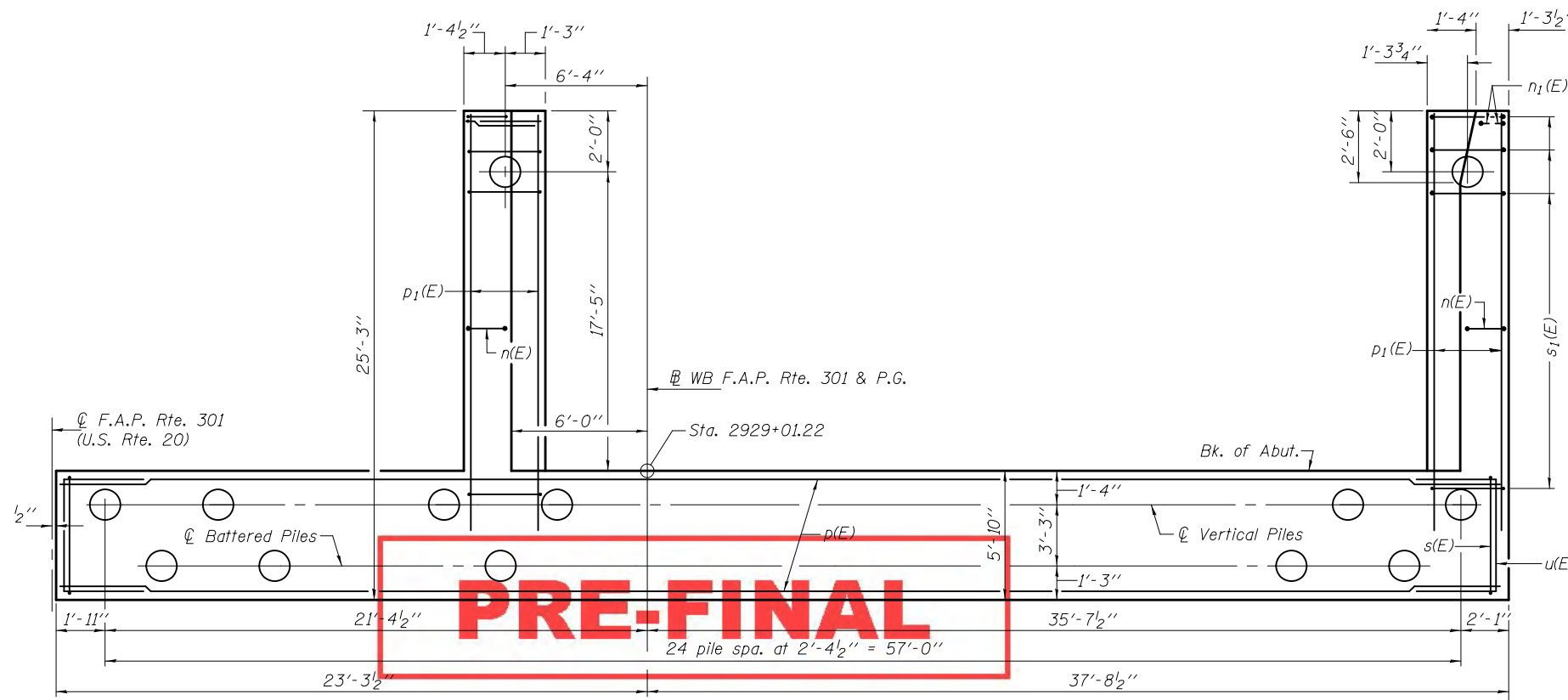
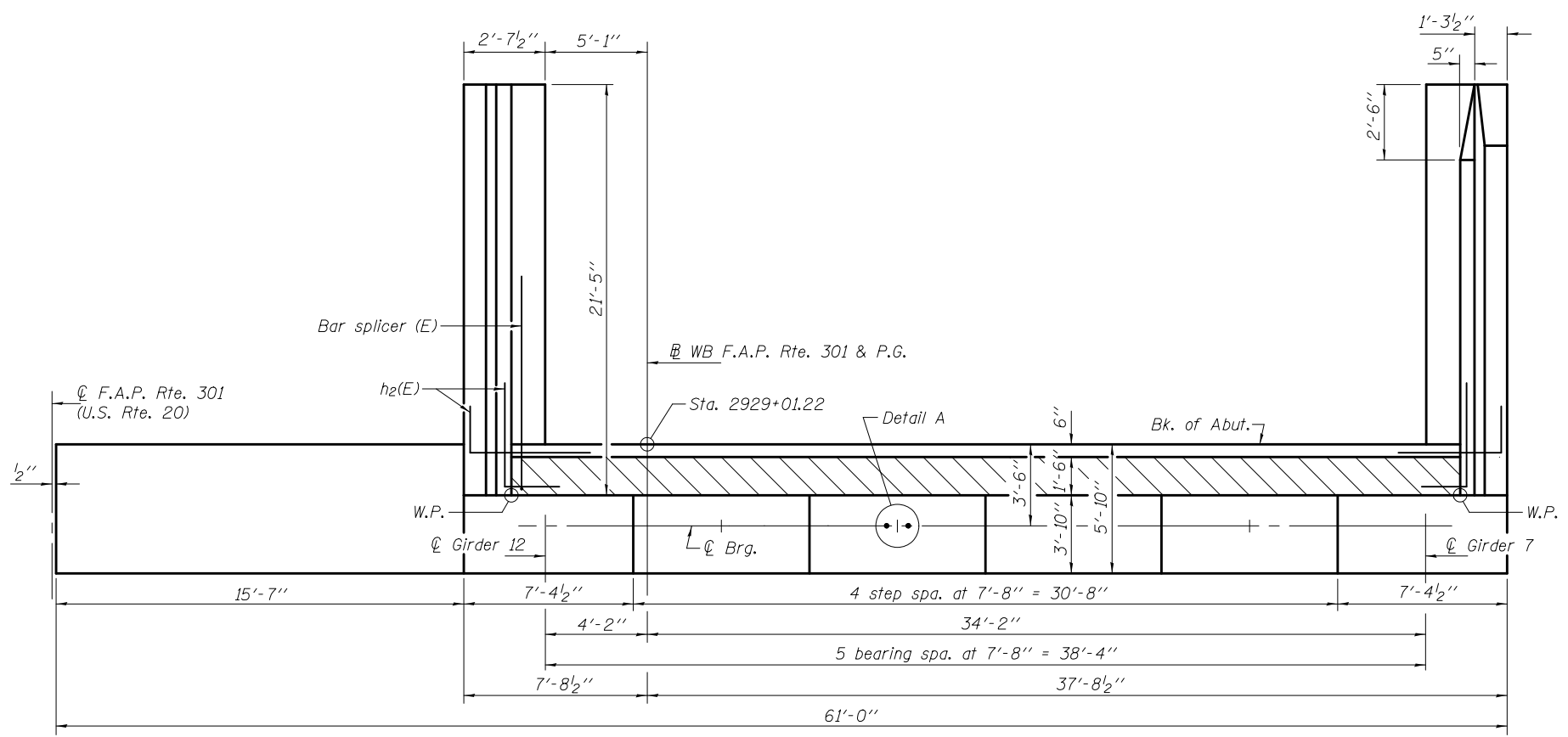


PILE DATA
 Type: Metal Shells 14"x .312" with Pile Shoes
 Nominal Required Bearing: 453 Kips
 Factored Resistance Available: 249 Kips
 Est. Length: 50'
 No. Production Piles: 26
 No. Test Piles: 1



**WEST ABUTMENT (W.B.)
 BILL OF MATERIAL**

Bar	No.	Size	Length	Shape	
h(E)	14	#5	41'-8"	—	
h ₁ (E)	5	#6	41'-8"	—	
h ₂ (E)	36	#5	5'-3"	—	
h ₃ (E)	42	#4	21'-1"	—	
h ₄ (E)	14	#4	21'-2"	—	
h ₅ (E)	5	#5	22'-8"	—	
n(E)	41	#6	16'-10"	—	
n ₁ (E)	6	#6	8'-5"	—	
p(E)	28	#7	32'-11"	—	
p ₁ (E)	12	#7	23'-2"	—	
s(E)	78	#5	18'-5"	—	
s ₁ (E)	42	#4	9'-5"	—	
s ₂ (E)	23	#4	8'-6"	—	
u(E)	8	#6	13'-1"	—	
v(E)	43	#5	3'-10"	—	
v ₁ (E)	43	#4	3'-2"	—	
v ₂ (E)	44	#6	11'-8"	—	
v ₃ (E)	3	#6	11'-1"	—	
v ₄ (E)	41	#6	11'-9"	—	
v ₅ (E)	43	#5	9'-2"	—	
v ₆ (E)	43	#5	10'-6"	—	
Structure Excavation				Cu. Yd.	118.1
Concrete Structures				Cu. Yd.	113.1
Reinforcement Bars, Epoxy Coated				Pound	10330
Furnishing Metal Shell Piles 14"x .312"				Foot	1300
Driving Piles				Foot	1300
Test Pile, Metal Shells				Each	1
Pile Shoes				Each	27
Concrete Sealer				Sq. Ft.	1029.3
Anchor Bolts, 1"				Each	12

For details of piles, see sheet 45 of 50. See sheet 40 of 50 for reinforcement in the wingwalls.