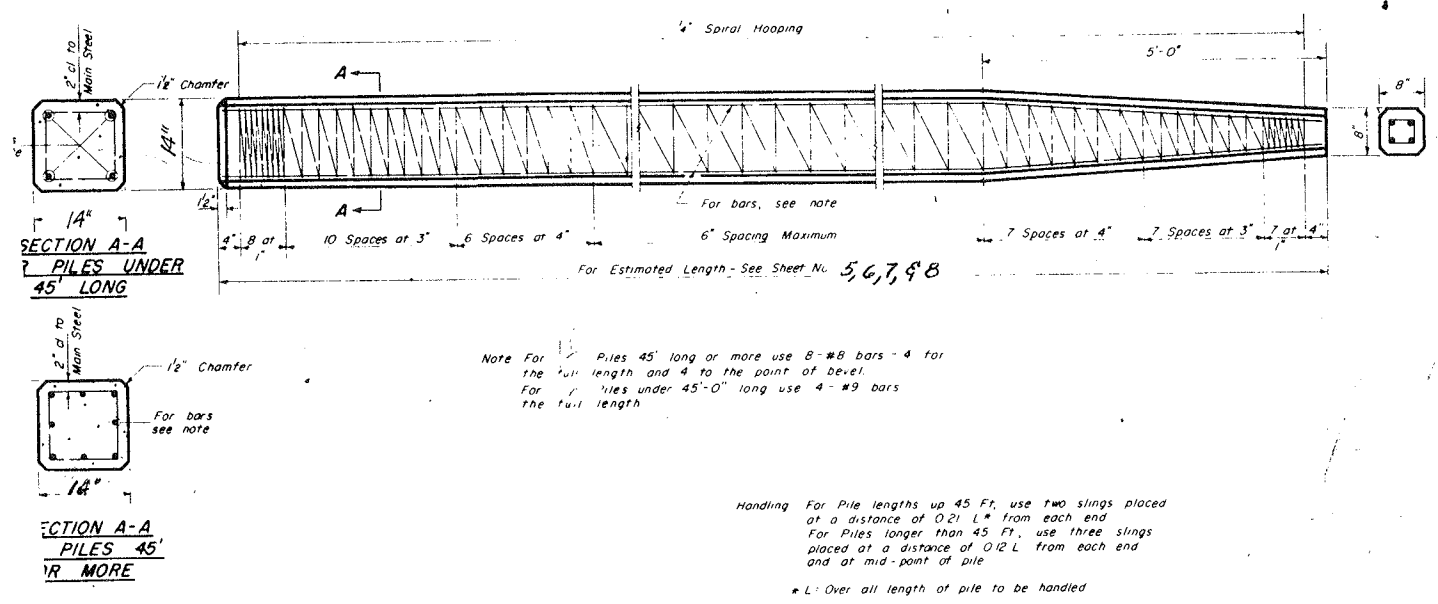
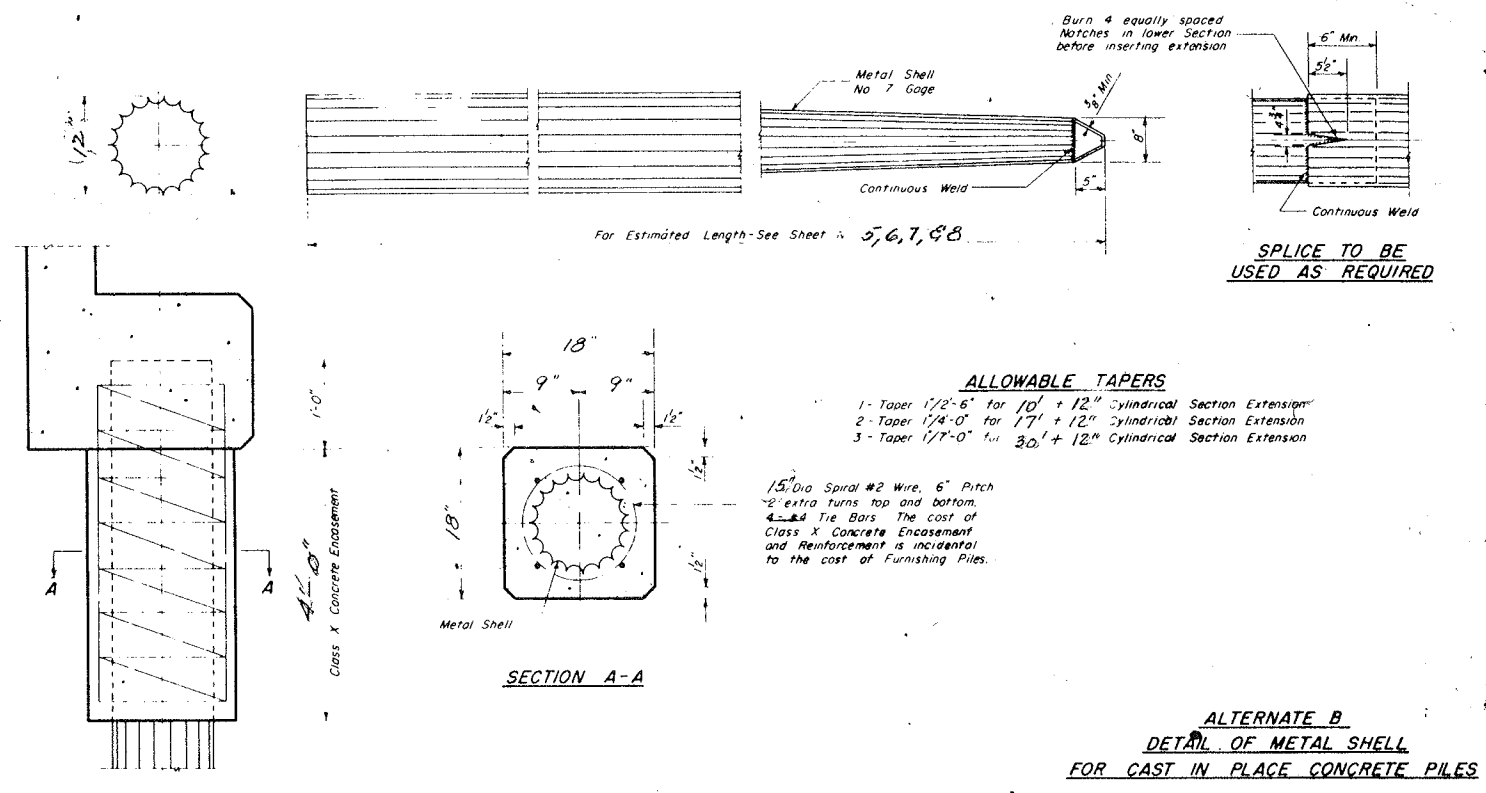
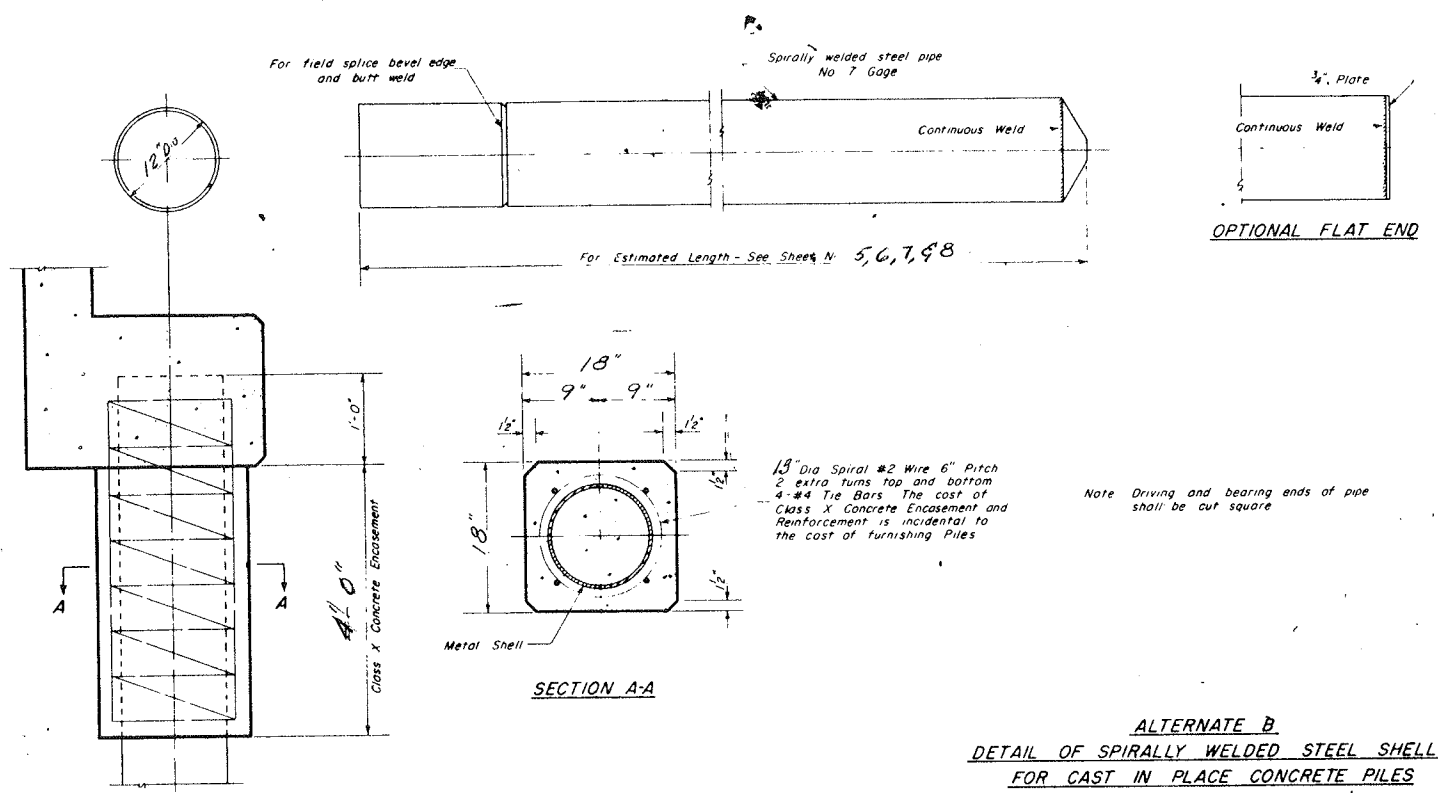


STATE OF ILLINOIS
DEPARTMENT OF PUBLIC WORKS & BUILDINGS
DIVISION OF HIGHWAYS

ROUTE NO.	SECTION	COUNTY	TOTAL SHEETS	SHEET NO.
194	3B	Winnebago	25	23
FED. ROAD DIST. NO. 7		ILLINOIS	FED. AID PROJECT	

SHEET NO. 23
SHEETS 23



DESIGNED	EXAMINED	19
DRAWN	ENGINEER OF BRIDGE AND TRAFFIC STRUCTURES	
CHECKED	PASSED	
BY W. A. Sausman	ENGINEER OF DESIGN	
APPROVED	CHIEF HIGHWAY ENGINEER	

F.A. ROUTE 194
ROCKFORD BYPASS
SECTION 3B1
STANDARD CONCRETE PILES
Sheet 244 of 290

FOR INFORMATION ONLY