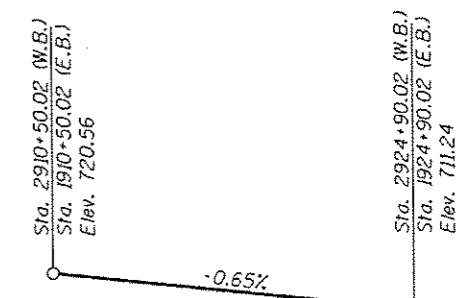
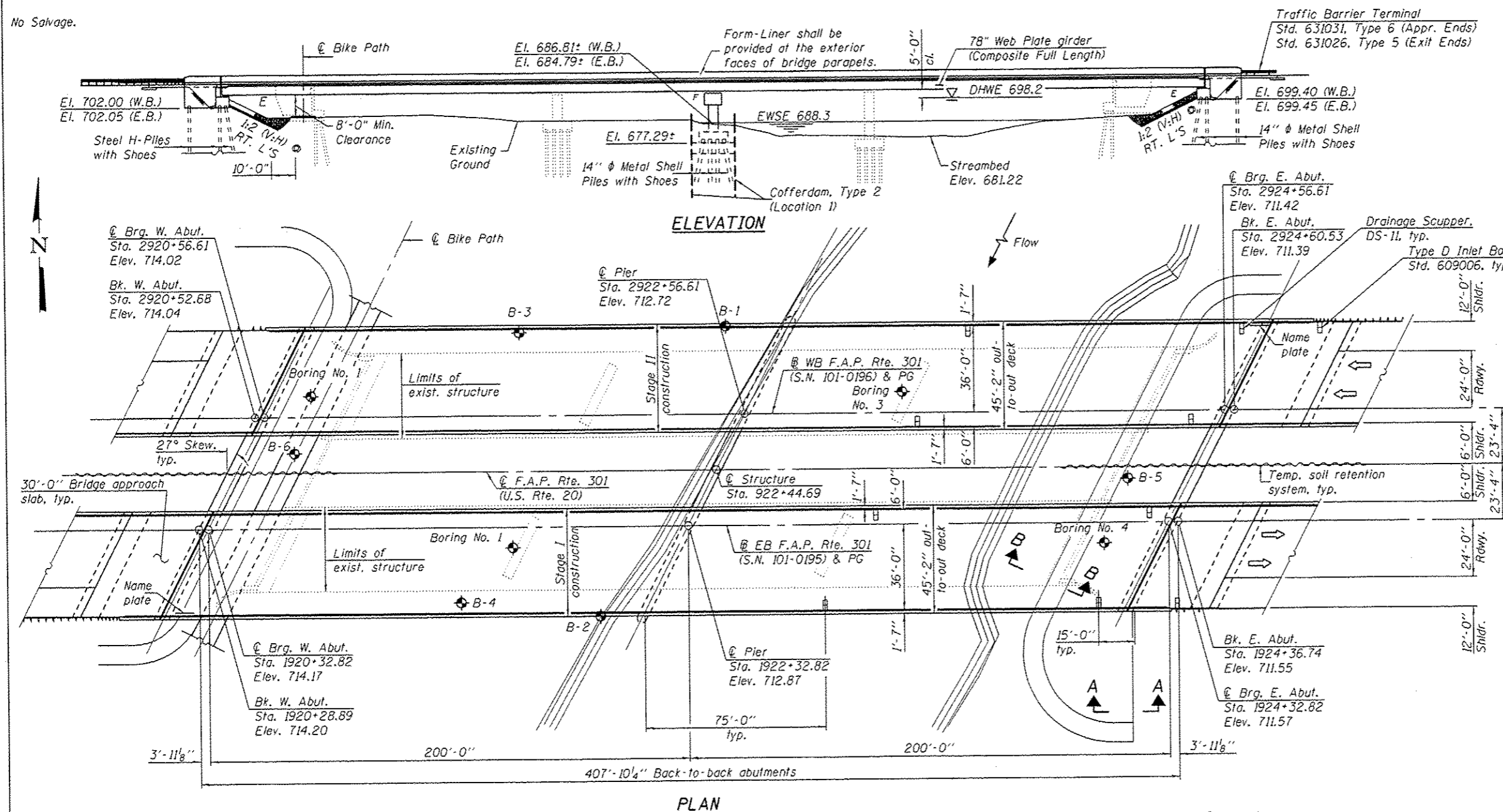


Bench Mark: # 405. Chiseled Square on Ditch check 1.877 ft Left of Station 921+02.969. Elevation 712.881.

Existing Structures: SN 101-0057 (E.B.) and SN 101-0058 (W.B.) over West Channel of Rock River. Built in 1961 as F.A. RT. 194 Section 3B, F.A. PROJ U-284 (5) at station 483+55. Existing dual structures each consist of 3-spans, reinforced concrete deck on two riveted steel plate girders supported by closed Pile bent abutments and two solid hammerhead piers. All substructure units are supported by concrete piles. 336'-4 3/8" back to back of abutments. The main span is 130' long and both the end spans are 100ft long. The out to out width of deck is 35'-8". The structure is skewed 27 degrees ahead left. Structures to be removed and replaced, new substructure to accommodate future expansion to inside. Traffic to be maintained utilizing crossovers.

No Salvage.



**STATION 922+44.69**  
BUILT 20 BY  
STATE OF ILLINOIS  
F.A.P. RTE. 301 SEC. 3BR & 3BR-1  
LOADING HL-93  
STRUCTURE NO. 101-0195 (E.B.)

**STATION 922+44.69**  
BUILT 20 BY  
STATE OF ILLINOIS  
F.A.P. RTE. 301 SEC. 3BR & 3BR-1  
LOADING HL-93  
STRUCTURE NO. 101-0196 (W.B.)

**NAME PLATE**  
See Std. 515001

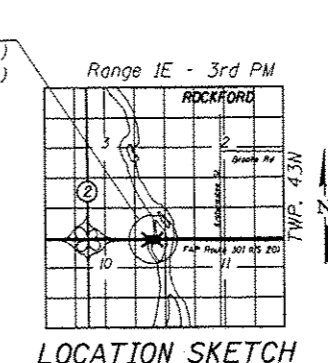
**LOADING HL-93**  
Allow 50#/sq. ft. for future wearing surface.

**DESIGN SPECIFICATIONS**  
2012 AASHTO LRFD Bridge  
Design Specifications, 6th Edition

**DESIGN STRESSES**  
FIELD UNITS  
f<sub>c</sub> = 3,500 psi  
f<sub>y</sub> = 60,000 psi (Reinforcement)  
f<sub>y</sub> = 50,000 psi (M270 Grade 50)

**SEISMIC DATA**  
Seismic Performance Zone (SPZ) = 1  
Design Spectral Acceleration at 1.0 sec. (S<sub>D1</sub>) = .079g  
Design Spectral Acceleration at 0.2 sec. (S<sub>D5</sub>) = .134g  
Soil Site Class = D

**GENERAL PLAN & ELEVATION**  
**US 20 OVER ROCK RIVER**  
**PUBLIC WATERS**  
**FAP RTE. 301 - SEC. 3BR & 3BR-1**  
**WINNEBAGO COUNTY**  
**STATION 922+44.69**  
**STRUCTURE NO. 101-0195 (E.B.)**  
**STRUCTURE NO. 101-0196 (W.B.)**



Note: See Sections A-A and B-B on sheet 2 of 55.



DESIGNED - <i>[Signature]</i>	EXAMINED - <i>[Signature]</i>	DATE - OCTOBER 4, 2013	<b>STATE OF ILLINOIS DEPARTMENT OF TRANSPORTATION</b>	<b>GENERAL PLAN &amp; ELEVATION STRUCTURE NO. 101-0195 (E.B.) &amp; 101-0196 (W.B.)</b>	F.A.P. RTE. 301	SECTION 3BR & 3BR-1	COUNTY WINNEBAGO	TOTAL SHEETS 290	SHEET NO. 100	
CHECKED - <i>[Signature]</i>	PASSED - <i>[Signature]</i>	REVISED			CONTRACT NO. 64D19			ILLINOIS FED. AID PROJECT		
DRAWN - h.t. duong		REVISED			SHEET NO. 1 OF 55 SHEETS					
CHECKED - NRB/ARS/KRA		REVISED								