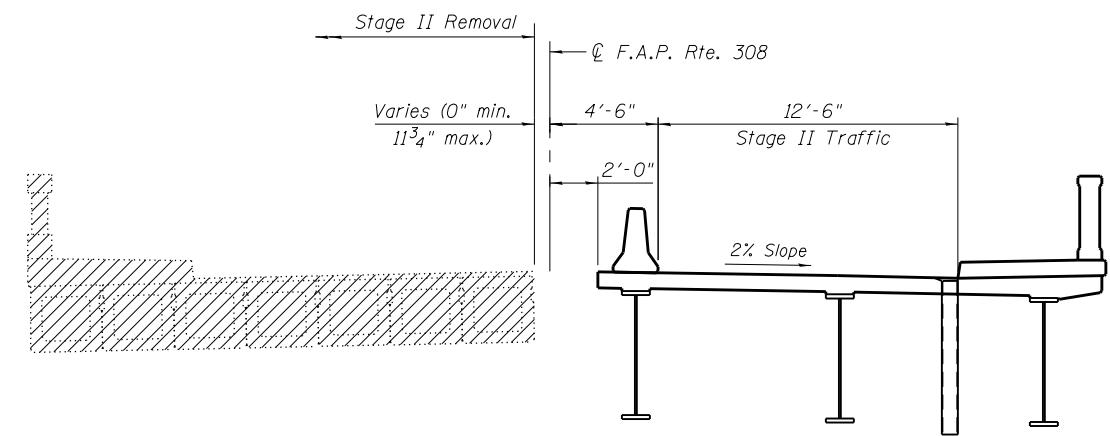


STAGE I REMOVAL
(Looking North)



STAGE II REMOVAL
(Looking North)

Notes:

All horizontal dimensions shown are radial and measured at the back of abutment except where noted.

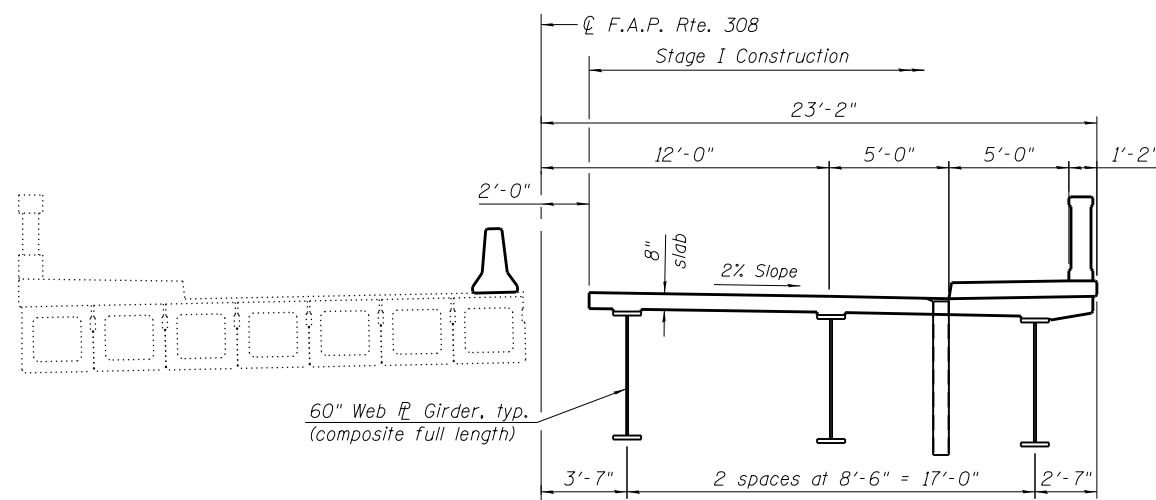
Hatched area indicates Removal of Existing Structures. See sheets 6 and 7 of 60.

For Temporary Concrete Barrier Details, see sheet 9 of 60.

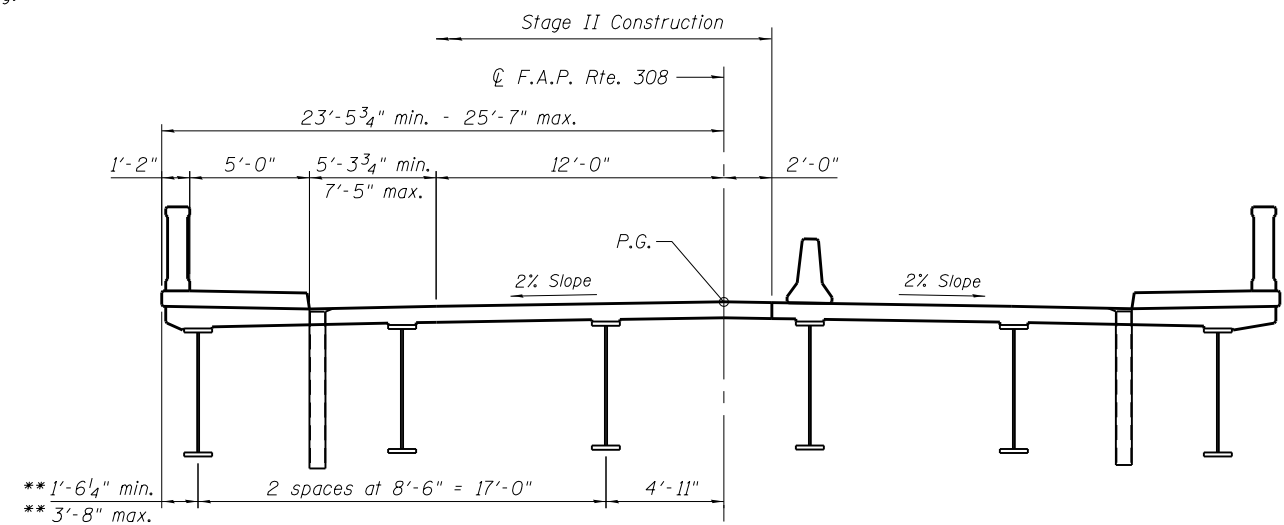
See Roadway Plans for quantity of Temporary Concrete Barrier.

* Dimension is measured at Rt. L's to Removal Line

** Dimensions taken at ϕ Brg.



STAGE I CONSTRUCTION
(Looking North)



STAGE II CONSTRUCTION
(Looking North)