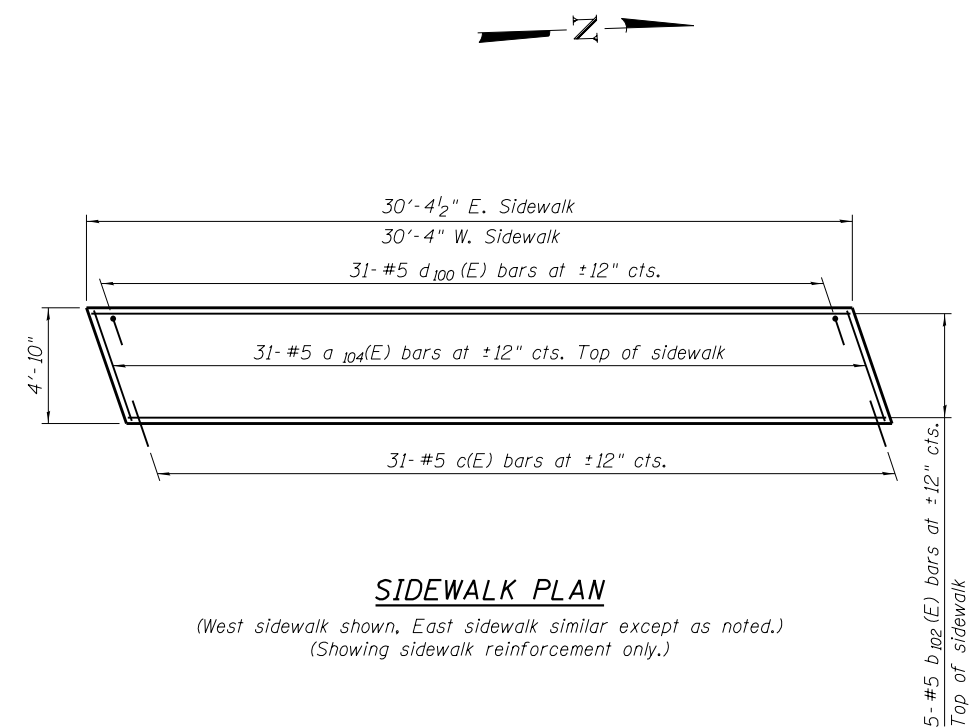


PLAN

(Sidewalk reinforcement not shown for clarity, see Sidewalk Plan.)

- * Tilt #9 b₁₀₁ (E) bars as required to maintain clearance.
- ** Prefomed Flexible Foam Expansion Joint Filler according to Article 1051.09 of the Standard Specifications: full depth of slab and sidewalk, full length of wingwall, typ. each wingwall. Cost included with Concrete Superstructure.
- # Dimensions are radial to C roadway and P.G.



SIDEWALK PLAN

(West sidewalk shown, East sidewalk similar except as noted.)
(Showing sidewalk reinforcement only.)

Notes:

See sheet 22 of 60 for Sections A-A, B-B, C-C, and Bill of Material.
Place longitudinal bars in approach slab parallel to a chord intersecting roadway centerline at Sta. 318+33.98 and Sta. 318+64.38.
The sidewalk is cast monolithically over the south abutment backwall.
See sheet 32 of 60 for details.