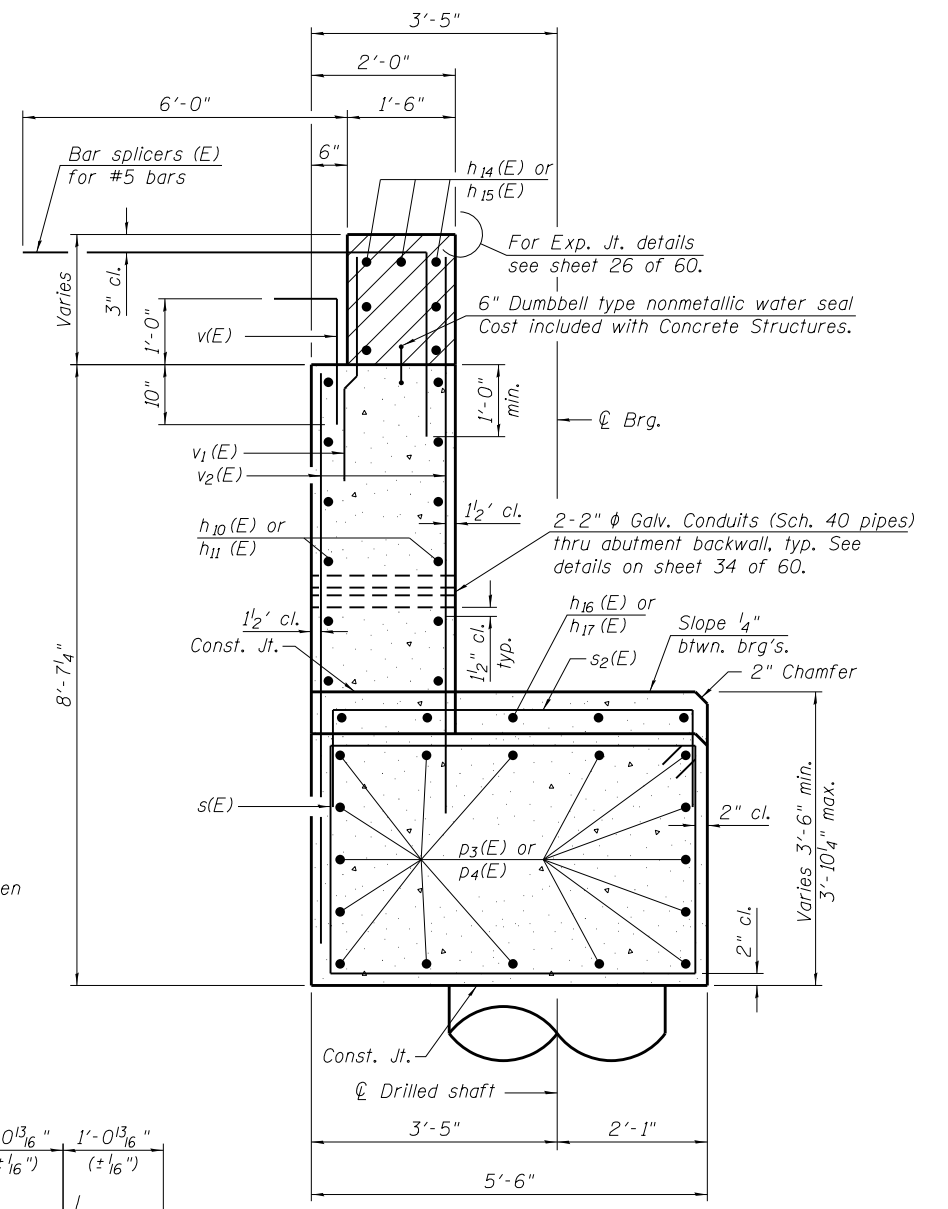


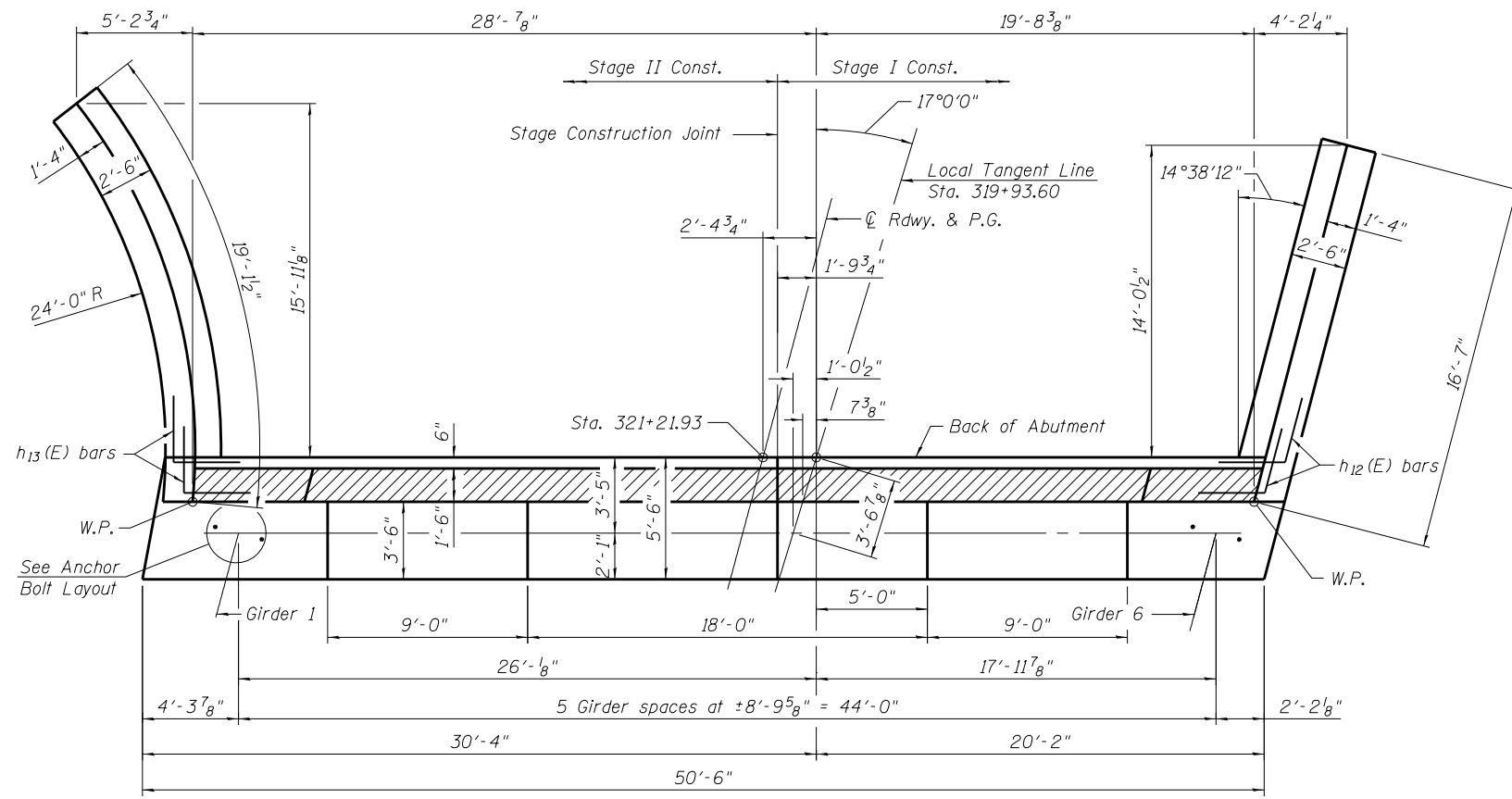
ELEVATION

* Elevations taken at the front face of the abutment backwall.

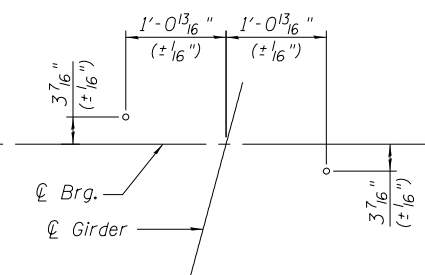
Notes:
 For details of Bar Splicers, see sheet 39 of 60.
 Space reinforcement in cap to miss anchor bolts.
 Hatched area to be poured after superstructure false work has been removed. Quantity of concrete included with Concrete Superstructure.
 Pour steps monolithically with cap.
 For drilled shaft details, see sheet 37 of 60.



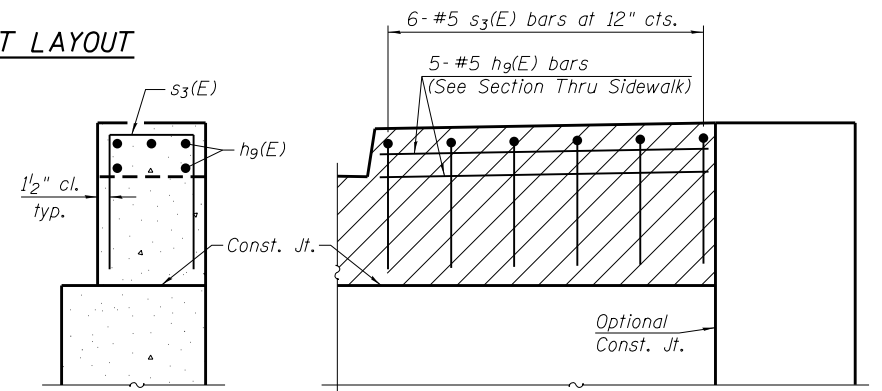
SECTION THRU ABUT.



TOP VIEW



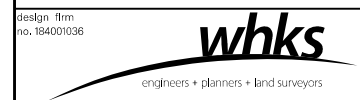
ANCHOR BOLT LAYOUT



SECTION THRU SIDEWALK

SIDEWALK ELEVATION

(See section thru abutment for reinforcement not shown.)



USER NAME = dheberling	DESIGNED - BRD	REVISED
FILE NAME = 0430028-64E08.dgn	CHECKED - SBC	REVISED
PLOT SCALE = 0:2.00000 '1' / in.	DRAWN - DLH	REVISED
PLOT DATE = 9/26/2013	CHECKED - SBC	REVISED

**STATE OF ILLINOIS
 DEPARTMENT OF TRANSPORTATION**

**NORTH ABUTMENT
 STRUCTURE NO. 043-0080**

SHEET NO. 35 OF 60 SHEETS

F.A.P. R.T.E.	SECTION	COUNTY	TOTAL SHEETS	SHEET NO.
308	103BR-4	JoDAVISS	159	85
CONTRACT NO. 64E08				

ILLINOIS FED. AID PROJECT