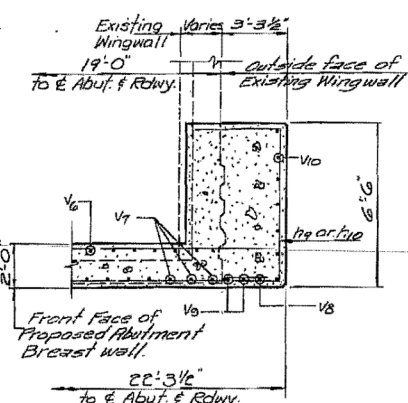
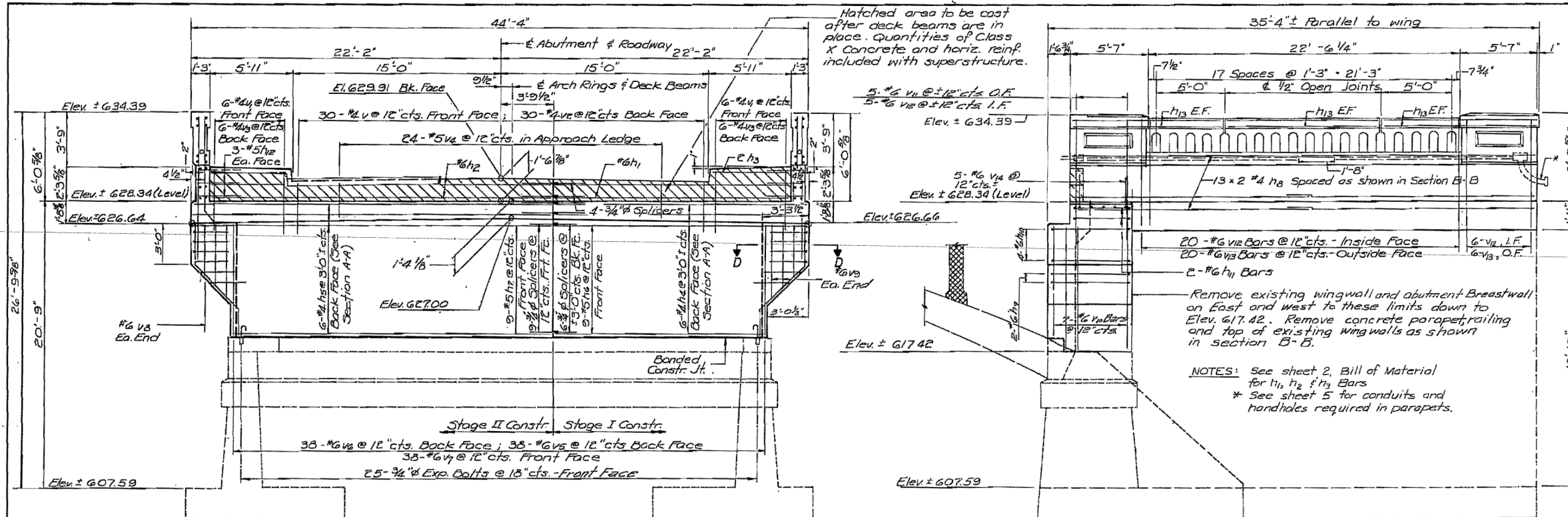


ROUTE NO.	SECTION	COUNTY	TOTAL SHEETS	SHEET NO.
EA. 18	103-D-BR	JO DAVIESS	27	18

SHEET 10 OF 15 SHEETS



SECTION D-D

NORTH ABUT. BILL OF MATERIAL

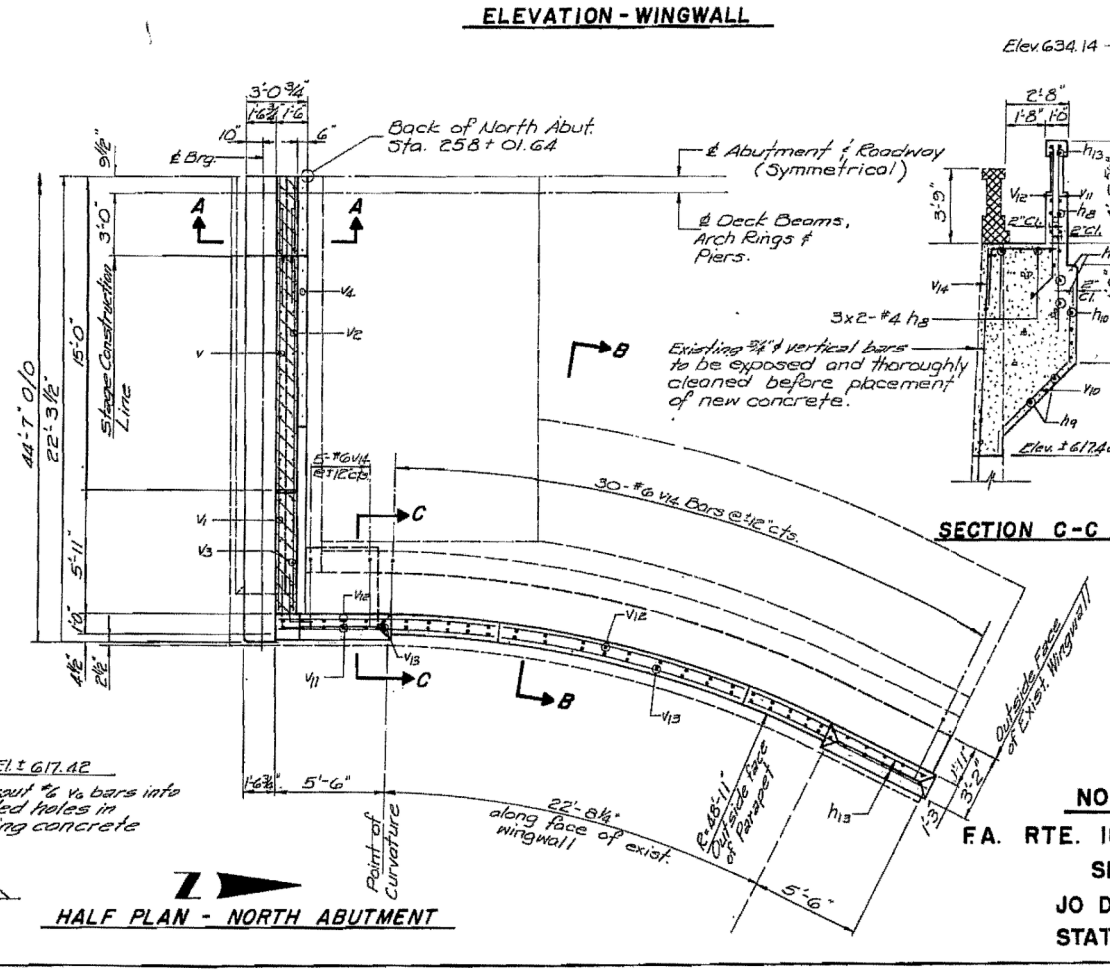
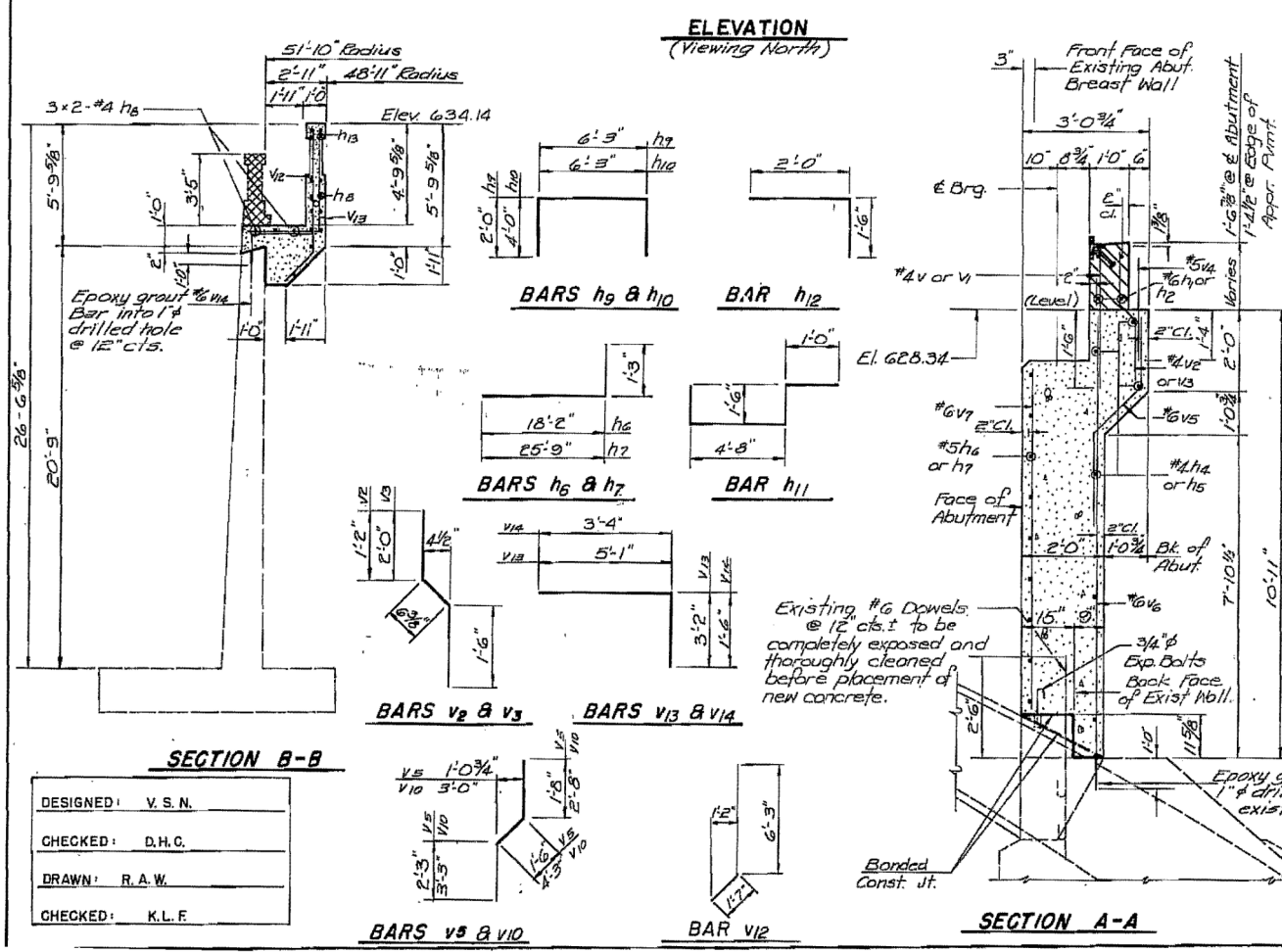
Bar No.	Size	Length	Shape
h4	#4	17'-10"	
h5	#4	25'-5"	
h6	#5	17'-10"	
h7	#5	25'-5"	
h8	#4	17'-6"	
h9	#6	10'-3"	
h10	#6	14'-3"	
h11	#4	8'-8"	
h12	#5	3'-5"	
h13	#4	10'-9"	
v	#4	3'-3"	
v1	#4	4'-2"	
v2	#4	3'-2"	
v3	#4	4'-0"	
v4	#4	2'-6"	
v5	#5	5'-5"	
v6	#6	11'-0"	
v7	#6	8'-2"	
v8	#6	2'-8"	
v9	#6	10'-5"	
v10	#6	10'-2"	
v11	#6	8'-7"	
v12	#6	7'-10"	
v13	#6	8'-3"	
v14	#6	4'-10"	

Class X Concrete C.Y. 65.6
 Reinforcement Bars LBS. 5640
 Exp. Bolts 3/4" # Each 25
 Concrete Removal C.Y. 20.7

Cost of 3/4" Splicers is incidental to reinforcement. See sheet 12 for Splicer Details. Bars indicated thus 5 x 2 cts. indicates 5 lines of bars with 2 lengths per line.

NORTH ABUTMENT

FA. RTE. 18 OVER APPLE RIVER
 SECTION 103-D-BR
 JO DAVIESS COUNTY
 STATION 259 + 08.20



HALF PLAN - NORTH ABUTMENT

DESIGNED: V.S.N.
 CHECKED: D.H.C.
 DRAWN: R.A.W.
 CHECKED: K.L.F.

USER NAME = dheberling	DESIGNED -	REVISED -
FILE NAME = 0430028-64E08.dgn	CHECKED -	REVISED -
PLOT SCALE = 0:2.00000 '1' / in.	DRAWN -	REVISED -
PLOT DATE = 8/5/2013	CHECKED -	REVISED -

STATE OF ILLINOIS
 DEPARTMENT OF TRANSPORTATION

EXISTING PLANS
 STRUCTURE NO. 043-0080
 SHEET NO. 56 OF 60 SHEETS

F.A.P. RTE.	SECTION	COUNTY	TOTAL SHEETS	SHEET NO.
308	103BR-4	JO DAVIESS	159	106

CONTRACT NO. 64E08

ILLINOIS FED. AID PROJECT

