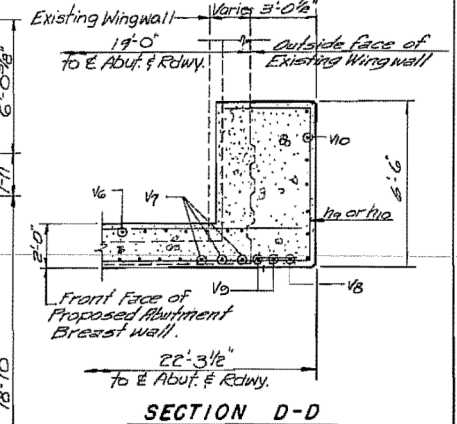
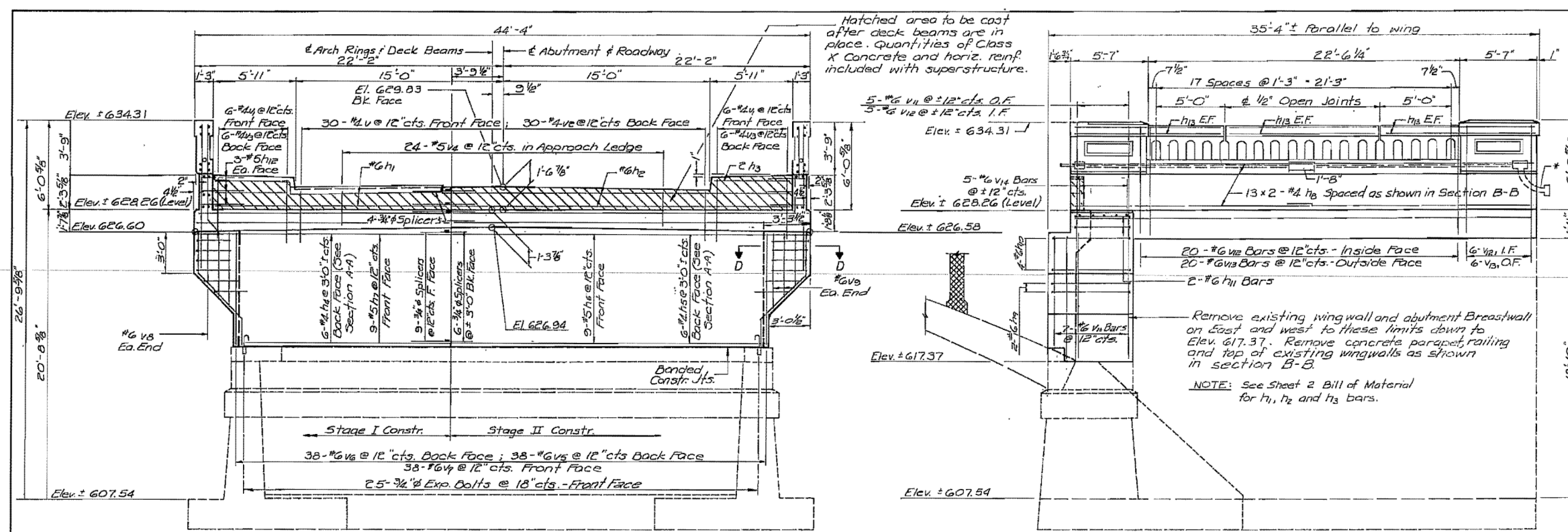


ROUTE NO.	SECTION	COUNTY	TOTAL SHEETS	SHEET NO.
FA 18	103-D-BR	JO DAVIESS	27	19

SHEET 11 OF 15 SHEETS



SOUTH ABUT BILL OF MATERIAL

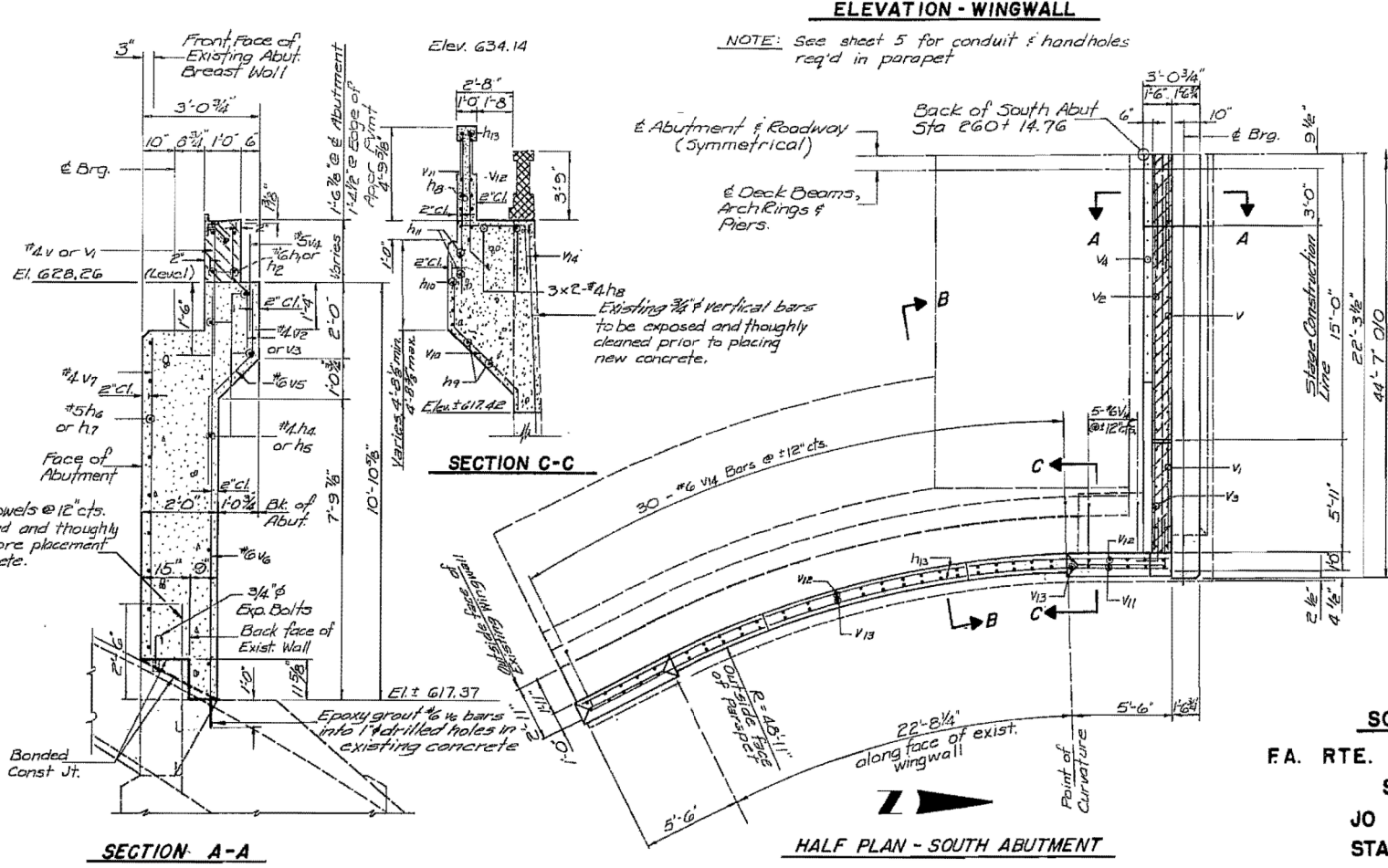
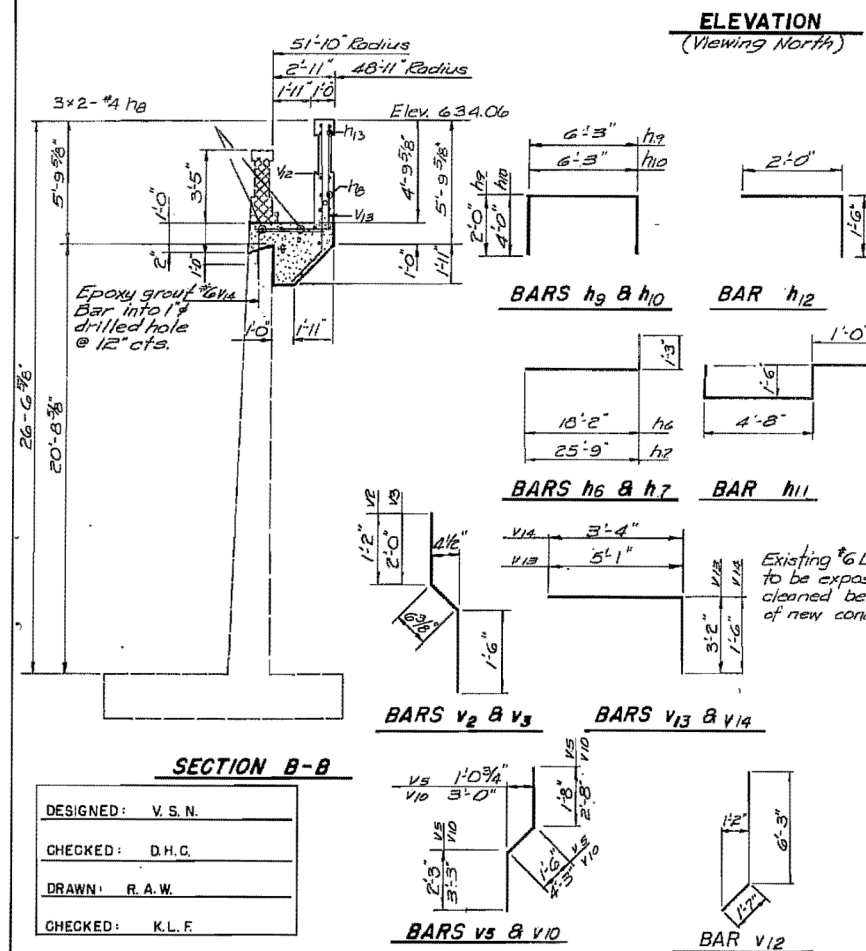
Bar	No.	Size	Length	Shape
h4	6	#4	17'-10"	---
h5	6	#4	25'-5"	---
h6	9	#5	17'-10"	---
h7	9	#5	25'-5"	---
h8	52	#4	17'-6"	---
h9	4	#6	10'-3"	---
h10	8	#6	14'-3"	---
h11	4	#6	8'-8"	---
h12	12	#5	3'-6"	---
h13	24	#4	10'-9"	---
v	30	#4	3'-3"	---
v1	12	#4	4'-2"	---
v2	30	#4	3'-2"	---
v3	12	#4	4'-0"	---
v4	24	#5	2'-6"	---
v5	38	#6	5'-5"	---
v6	38	#6	11'-0"	---
v7	38	#6	8'-2"	---
v8	2	#6	2'-8"	---
v9	4	#6	10'-6"	---
v10	14	#6	10'-2"	---
v11	10	#6	8'-7"	---
v12	62	#6	7'-10"	---
v13	52	#6	8'-3"	---
v14	70	#6	4'-10"	---

Class X Concrete	C.Y.	65.6
Reinforcement Bars	LBS.	5640
Exp. Bolts 3/4" f	EACH	25
Concrete Removal	C.Y.	20.7
Handrail Conc.		

Cost of 3/4" Splicers is incidental to reinforcement. See sheet 12 for Splicer Details. Bars indicated thus 5x2 cts. indicates 5 lines of bars with 2 lengths per line.

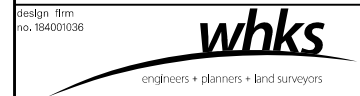
SOUTH ABUTMENT

F.A. RTE. 18 OVER APPLE RIVER
SECTION 103-D-BR
JO DAVIESS COUNTY
STATION 259 + 08.20



DESIGNED: V.S.N.
CHECKED: D.H.G.
DRAWN: R.A.W.
CHECKED: K.L.F.

FOR INFORMATION ONLY



USER NAME = dheberling	DESIGNED -	REVISED -
FILE NAME = 0430028-64E08.dgn	CHECKED -	REVISED -
PLOT SCALE = 0:2.00000 '1' / in.	DRAWN -	REVISED -
PLOT DATE = 8/5/2013	CHECKED -	REVISED -

STATE OF ILLINOIS
DEPARTMENT OF TRANSPORTATION

EXISTING PLANS
STRUCTURE NO. 043-0080
SHEET NO. 57 OF 60 SHEETS

F.A.P. RTE.	SECTION	COUNTY	TOTAL SHEETS	SHEET NO.
308	103BR-4	JO DAVIESS	159	107

CONTRACT NO. 64E08
ILLINOIS FED. AID PROJECT

I. H. B. & C. NO. 1930 / 0028