

LEGEND

- AREA OF CONSTRUCTION
- DRUMS WITH WARNING LIGHTS PER IDOT STANDARD 701901-02
- BARRICADE, TYPE 3
- BARRICADE, TYPE 1 OR 2
- FLAGGER WITH TRAFFIC CONTROL SIGN
- SIGN ON PORTABLE SUPPORT

NOTE: ADDITIONAL "ROAD CONSTRUCTION AHEAD" SIGN TO BE PLACED ON FRANKLIN ST. BETWEEN MADISON AVE. AND JEFFERSON ST. FOR EASTBOUND TRAFFIC.

TRAFFIC CONTROL STAGING PLAN

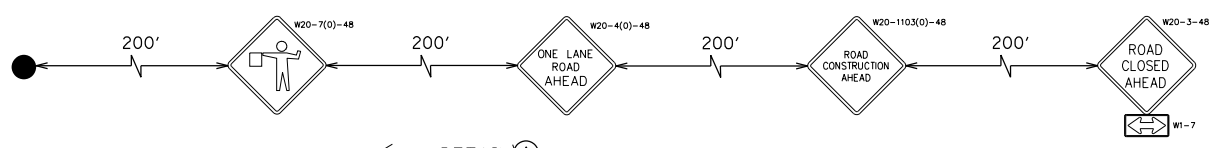
LANE CLOSURE TO FOLLOW IDOT STANDARD 701501-06 FOR UNDIVIDED, 2 LANE URBAN LANE CLOSURES.

ROAD CLOSURES TO FOLLOW IDOT STANDARD 701501-06 FOR TRAFFIC CONTROL DEVICES.

FLAGGER TRAFFIC CONTROL, TEMPORARY SIGNAGE, DRUMS, AND BARRICADES TO FOLLOW IDOT STANDARDS 701901-02 FOR TRAFFIC CONTROL DEVICES.

ALL TRAFFIC CONTROL DEVICES WILL CONFORM TO THE ILLINOIS MANUAL ON UNIFORM TRAFFIC CONTROL DEVICES (ILMUTCD). AT ALL TIMES DURING CONSTRUCTION, ALL PROPERTIES WILL HAVE ACCESS AT THE END OF EVERY WORKDAY.

ALL OPEN TRENCHES TO BE OVERLAID WITH BITUMINOUS MATERIAL AT THE END OF EVERY WORK DAY.

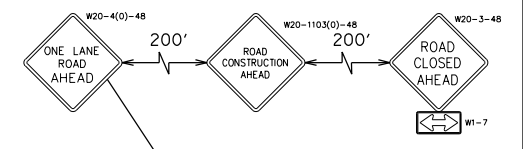


MAINTENANCE OF TRAFFIC AND CONSTRUCTION SEQUENCE DESCRIPTION

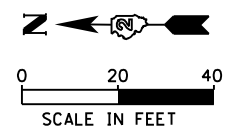
SANITARY SEWER CONSTRUCTION WILL BE STAGED BY PROVIDING ONE LANE OF TRAFFIC ON ILLINOIS ROUTE 84 AT ALL TIMES. TEMPORARY FLAGGING WILL BE REQUIRED DURING EACH OF THE THREE STAGES. NORTH JACKSON ST. AND FULTON ST. WILL BE CLOSED DURING STAGE 2 AND 3 TO FACILITATE TRAFFIC ON ILLINOIS ROUTE 84 DURING CONSTRUCTION. CLOSURES SHALL BE MAINTAINED DURING WORKING CONSTRUCTION HOURS WHEN OPEN TRENCHES EXIST.

STAGE 2 CONSTRUCTION

PAVEMENT AND TRENCH EXCAVATION FOR THE CONSTRUCTION OF NEW SANITARY SEWER (INCLUDING PROPOSED MANHOLE NO. 1 AND NO. 2) FROM SANITARY MANHOLE NO. 1 TO TIE-IN AT SANITARY MANHOLE NO. 3 ALONG NORTH JACKSON ST. ON THE NORTH SIDE OF THE APPLE RIVER.



FILE NAME: G:\Information\2012\12-159A\CADD Drawings\12-159A - Traffic Control.dgn



FEHR GRAHAM
ENGINEERING & ENVIRONMENTAL
ILLINOIS DESIGN FIRM NO. 04-00203

USER NAME = tizerst	DESIGNED -	REVISED -
	DRAWN - T.JL	REVISED -
PLOT SCALE = 48.0000' / in.	CHECKED - TMH	REVISED -
PLOT DATE = 7/24/2013	DATE - 09/14/12	REVISED -

**STATE OF ILLINOIS
DEPARTMENT OF TRANSPORTATION**

**IL ROUTE 84
OVER APPLE RIVER**

**MAINTENANCE OF TRAFFIC
STAGE 2**

SCALE: 1"=20' SHEET NO. 3 OF 10 SHEETS STA. TO STA.

F.A. RTE.	SECTION	COUNTY	TOTAL SHEETS	SHEET NO.
308	103 BR-4	JO DAVIESS	159	141
CONTRACT NO.				
ILLINOIS FED. AID PROJECT				