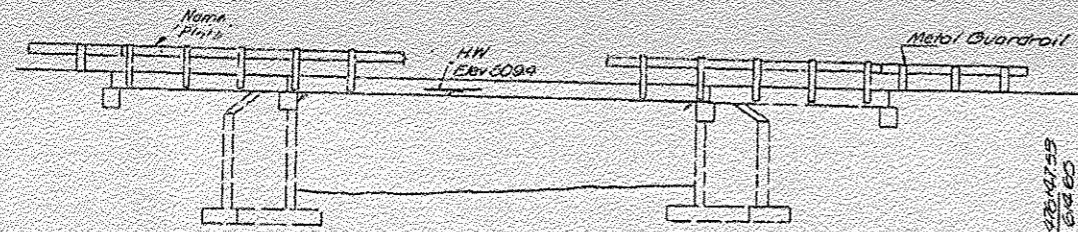


EXISTING STRUCTURE PLANS (FOR REFERENCE ONLY)

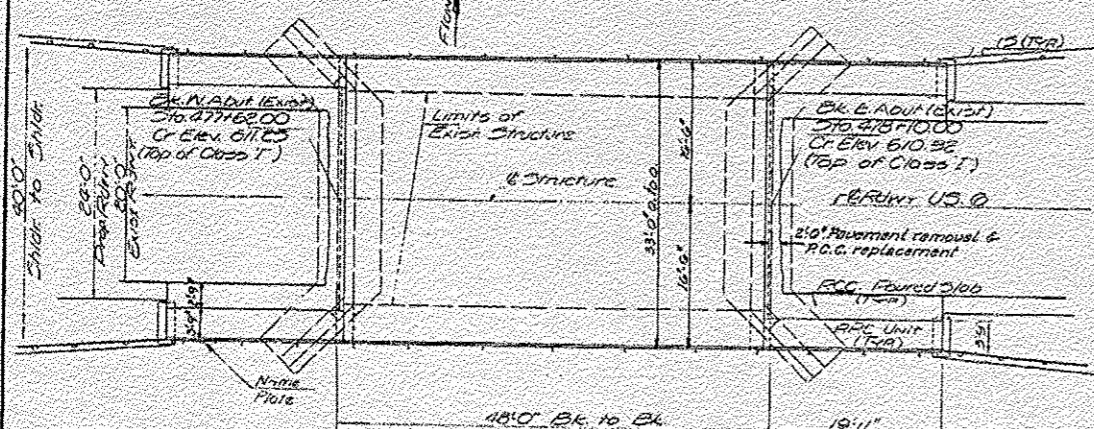
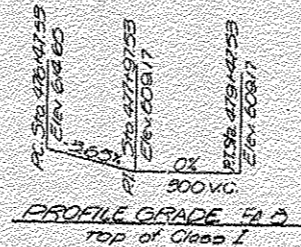
STATE OF ILLINOIS
DEPARTMENT OF TRANSPORTATION

DATE	BY	CHKD	APP'D	SCALE	SHEET NO.
U.S.G.	J.S.T.	HENRY	0	4	5 SHEETS

B.M. on E. HDWL. Lt. Sta. 471+50.241 E. Bridge Abut. Elev. 609.74
Existing Structure: Built on S.B.I. File # Dec. 30 in 1921
Superstr. is RC Through Girder Substr. is RC Abut.



ELEVATION



PLAN

STATION 471+6
BUILT 1921
STATE OF ILLINOIS
U.S. RTE. 6 - SEC. 30A
LOADING H320
NAME PLATE
See Dtd. 213

GENERAL NOTES

All reinforcement bars shall be lapped 34 diameters unless otherwise shown.
It shall be the responsibility of the Contractor to verify all dimensions & conditions existing in the field prior to construction & ordering of materials.
Expansion bolts shall consist of self-drilling expansion shields & 3/4" hooked bolts. Hooked bolts shall extend a minimum of 12" into new concrete except as otherwise shown.
Shoulder transition to wingwall shall be sloped with water concrete - cast in place.
Limits of Waterproofing Membrane System shall be two feet back of abutments and out to cut of deck.
The top surface of the beams shall be finished in accordance with Article 505.06 of the Standard Specifications except that the surface shall not be required by brooming. The finished surface shall be free of depressions or high spots with sharp corners.

BILL OF MATERIAL

ITEM	UNIT	SUB.	SUPER.	TOTAL
Portland Cement Concrete Reinforcement (10')	Sq. Yds.			88
Pavement Fabric	Sq. Yds.			88
Concrete Removal	Cu. Yds.	9.0		9.0
Expansion Bolts (3/4")	Each			88
Class X Concrete	Cu. Yds.	13.5	1.6	15.1
Precast Concrete Bridge Slab	Sq. Ft.			299
Precast Prestressed Concrete Deck Beams (6')	Sq. Ft.		1,579	1,579
Steel Reinforcing Bars	Lbs.		176	176
Reinforcement Bars	Lbs.	1,750		1,750
Pavement Removal & P.C.C. Replacement (10')	Sq. Yds.			9
Removal of Existing Superstructures	Each			1
Waterproofing Membrane System	Sq. Yds.		191	191
Bituminous Concrete Surface Course	Tons		80	80
Portland Cement Mortar Jointing Course	Lbs.		478	478
Man's Time	Each		1	1

WATERWAY INFORMATION

Drainage: CS 20 M
Character: level & rolling
Present Opening: 502.56 FT
Road Opening: 507.50 FT
Proposed Opening: 507.50 FT
Obs:

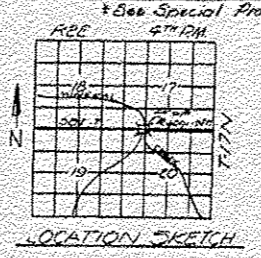
DESIGN STRESSES

FIELD UNITS
10,000 psi (Sub)
15,000 psi (Main)
15,700 psi (Footings)
11.10

PRECAST PRESTRESSED UNITS

10,000 psi
10,000 psi
15,000 psi (Strands)
15,198.700 psi (Strands)
Allow for 55 psi / 50 FT for Full W.S.
LOADING H320-34

DESIGNED: M.C.
CHECKED: M.C.
DRAWN: J.M.
CM CHECKED:
EXAMINED: J.M.
PASSED: J.M.
APPROVED: Richard H. Galt



GENERAL PLAN & ELEVATION
U.S. 6 OVER MINERAL CREEK
SEC. 30A
HENRY COUNTY
STATION 471+66

Rev. 4/1/75