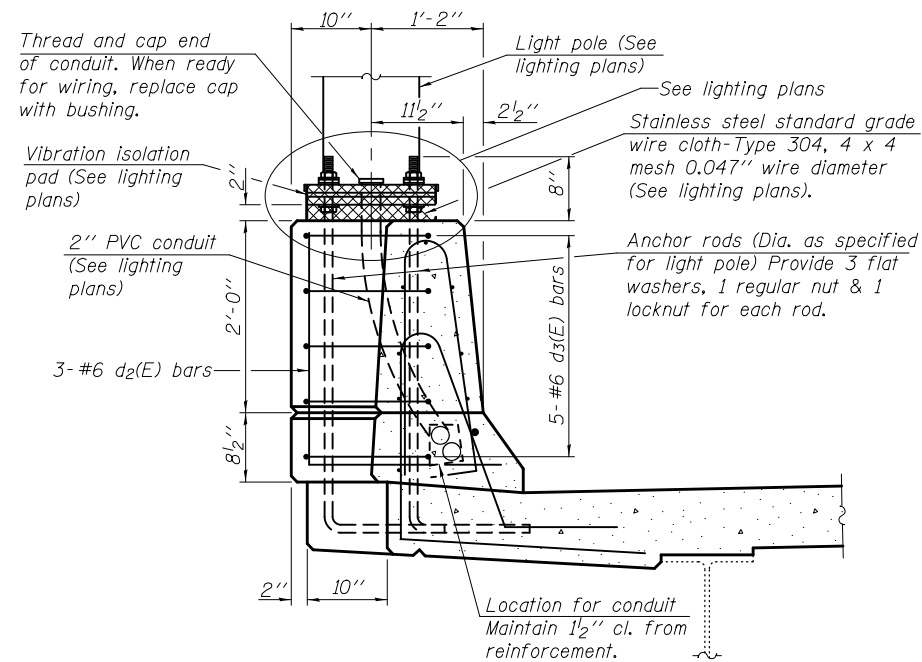
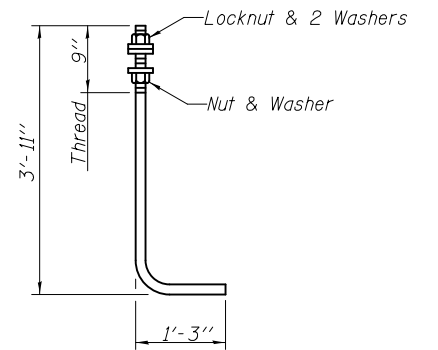


**LIGHT POLE FOUNDATION PLAN**

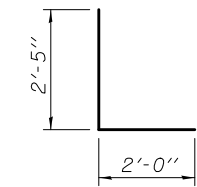
Notes:  
 Cost of anchor rods is included with Concrete Superstructure.  
 See sheet 1 of 79 for locations of light poles.



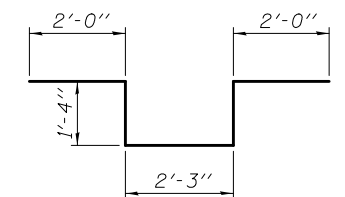
**SECTION A-A**



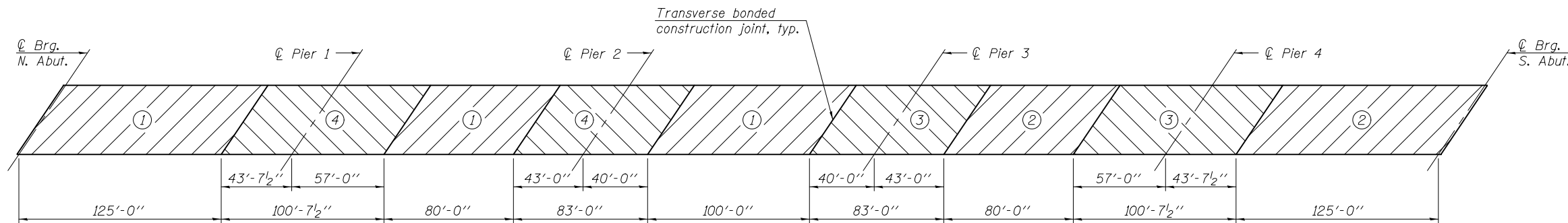
**ANCHOR ROD**  
 Diameter as specified for light poles. (ASTM F 1554 Grade 105). Full length hot dipped galvanized.



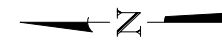
**BAR d<sub>2</sub>(E)**



**BAR d<sub>3</sub>(E)**



**DECK POURING SEQUENCE**  
 (Typical each structure)



Note:  
 When the deck pour is stopped for the day at one or more of the transverse bonded construction joints in the deck pouring sequence as shown, the next pour shall not be made until both of the following are met:  
 1) At least 72 hours shall have elapsed from the end of the previous pour.  
 2) The concrete strength shall have attained a minimum flexural strength of 650 psi or a minimum compressive strength of 3500 psi.

DESIGNED - DAVID H. RICHTER	EXAMINED - <i>Joanne F. Schaff</i> ACTING ENGINEER OF BRIDGE DESIGN	DATE - OCTOBER 4, 2013	<b>STATE OF ILLINOIS DEPARTMENT OF TRANSPORTATION</b>	<b>SUPERSTRUCTURE DETAILS STRUCTURE NO. 046 - 0135 (NB) &amp; 046 - 0136 (SB)</b>	F.A.I. RTE. 57	SECTION (140)BR&BR-1	COUNTY KANKAKEE	TOTAL SHEETS 183	SHEET NO. 60	
CHECKED - JUSTIN T. BELUE	PASSED - <i>Carl Kasper</i> ACTING ENGINEER OF BRIDGES AND STRUCTURES	REVISED -			CONTRACT NO. 66750					
DRAWN - MICHAEL B. MOSSMAN		REVISED -			SHEET NO. 20 OF 79 SHEETS					
CHECKED - J.T.B. / D.H.R.					ILLINOIS FED. AID PROJECT					