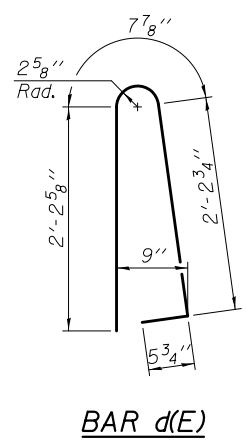


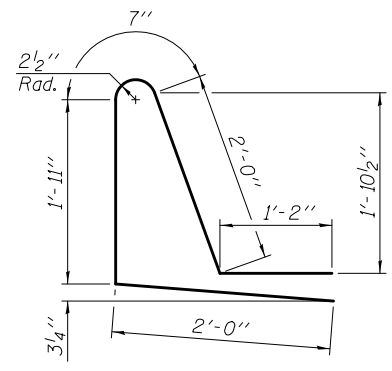
**DRAINAGE SCUPPER REINFORCEMENT PLAN**  
Cut longitudinal reinforcement to clear drainage scuppers.

Note A: Concrete deck shall extend beyond the edge of the girder by a minimum of  $\pm 7/8$ " for any modular joint option chosen.

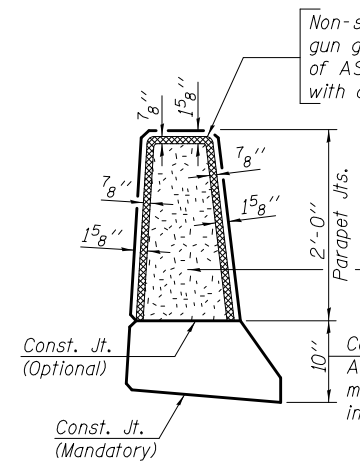
Note:  
Hatched areas to be poured after superstructure forms have been removed. Quantity of concrete included with Concrete Superstructure.  
Horizontal dimensions in Section A-A are taken at Rt. L's to abutment unless otherwise noted.



BAR d(E)



BAR d1(E)

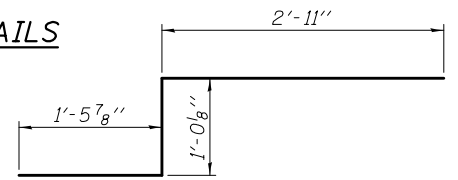
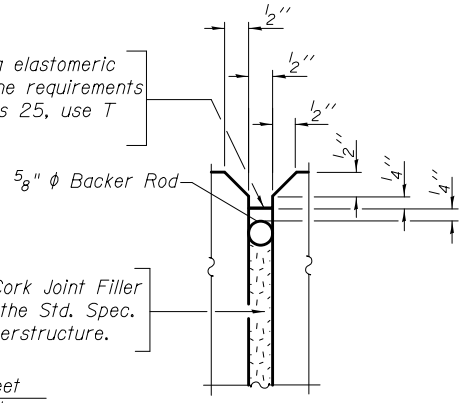


PARAPET JOINT DETAILS

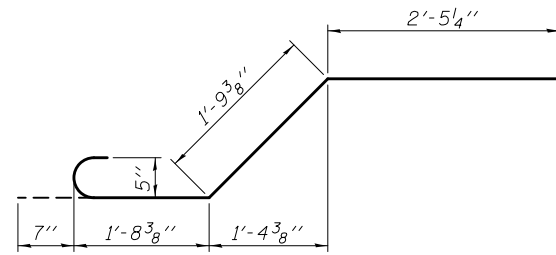
Non-staining gray one component non-sag elastomeric gun grade polyurethane sealant meeting the requirements of ASTM C-920, Type S, Grade NS, Class 25, use T with a 5/8" backer rod.

1/2" Preformed Self-Expanding Cork Joint Filler according to Article 1051.07 of the Std. Spec. Cost included with Concrete Superstructure.

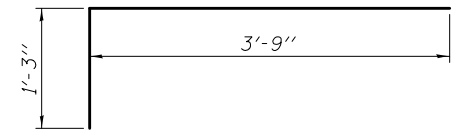
Const. Jts. at Piers 1/8" Aluminum sheet ASTM B 209 alloy 3003-H14 coated to minimize reaction with wet concrete. Cost included with Concrete Superstructure



BAR x2(E)



BAR x(E)



BAR x1(E)

**SUPERSTRUCTURE BILL OF MATERIAL S.N. 046-0135 (NB)**

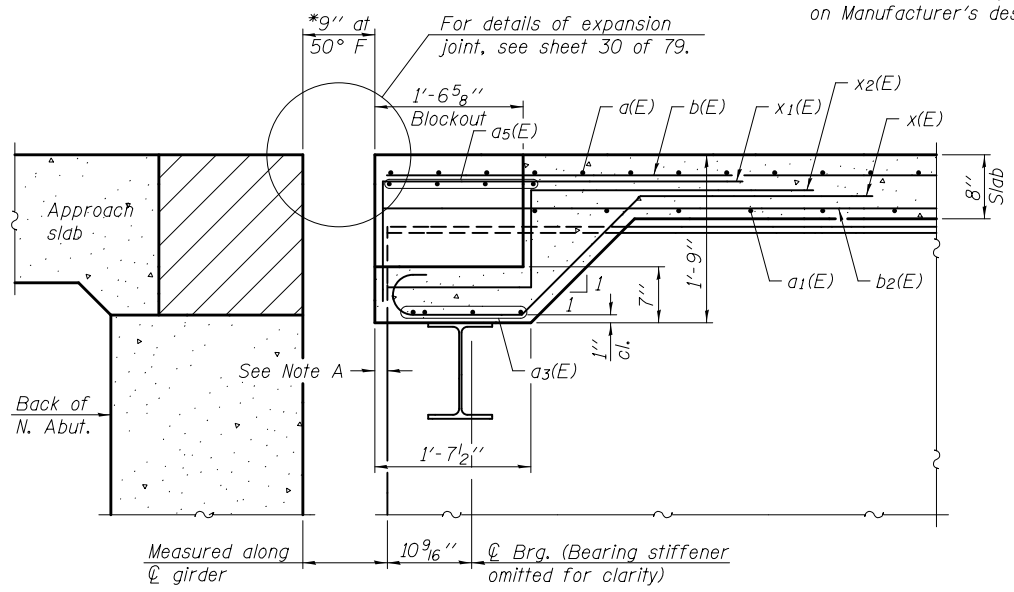
Bar	No.	Size	Length	Shape
a(E)	1754	#5	42'-6"	—
a1(E)	1170	#5	41'-6"	—
a2(E)	3508	#6	6'-6"	—
a3(E)	35	#5	8'-6"	—
a4(E)	3	#5	16'-9"	—
a5(E)	16	#6	27'-2"	—
a6(E)	64	#5	1'-6"	—
b(E)	1334	#5	32'-11"	—
b1(E)	258	#6	37'-5"	—
b2(E)	1230	#5	31'-10"	—
b3(E)	258	#6	32'-9"	—
d(E)	1920	#5	5'-7"	⌋
d1(E)	1918	#5	7'-8"	⌋
d2(E)	9	#6	4'-5"	⌋
d3(E)	15	#6	8'-11"	⌋
e(E)	224	#4	18'-6"	—
e1(E)	394	#4	19'-9"	—
e2(E)	20	#8	34'-0"	—
e3(E)	16	#8	19'-9"	—
e4(E)	30	#8	32'-1"	—
e5(E)	24	#4	26'-8"	—
e6(E)	36	#4	25'-0"	—
e7(E)	28	#4	11'-11"	—
e8(E)	14	#4	15'-5"	—
x(E)	60	#5	6'-6"	⌋
x1(E)	80	#5	5'-0"	⌋
x2(E)	60	#5	5'-5"	⌋
Reinforcement Bars, Epoxy Coated	Pound	320,120		
Concrete Superstructure	Cu. Yd.	1,199.1		

**SUPERSTRUCTURE BILL OF MATERIAL S.N. 046-0136 (SB)**

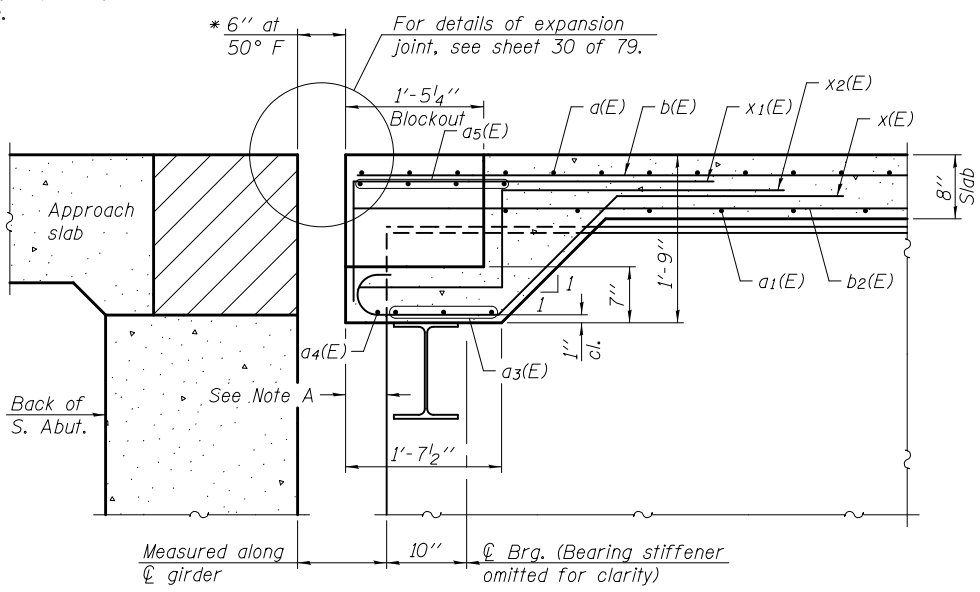
Bar	No.	Size	Length	Shape
a(E)	1754	#5	42'-6"	—
a1(E)	1170	#5	41'-6"	—
a2(E)	3508	#6	6'-6"	—
a3(E)	35	#5	8'-6"	—
a4(E)	3	#5	16'-9"	—
a5(E)	16	#6	27'-2"	—
a6(E)	64	#5	1'-6"	—
b(E)	1334	#5	32'-11"	—
b1(E)	258	#6	37'-5"	—
b2(E)	1230	#5	31'-10"	—
b3(E)	258	#6	32'-9"	—
d(E)	1920	#5	5'-7"	⌋
d1(E)	1918	#5	7'-8"	⌋
d2(E)	9	#6	4'-5"	⌋
d3(E)	15	#6	8'-11"	⌋
e(E)	224	#4	18'-6"	—
e1(E)	394	#4	19'-9"	—
e2(E)	20	#8	34'-0"	—
e3(E)	16	#8	19'-9"	—
e4(E)	30	#8	32'-1"	—
e5(E)	24	#4	26'-8"	—
e6(E)	36	#4	25'-0"	—
e7(E)	28	#4	11'-11"	—
e8(E)	14	#4	15'-5"	—
x(E)	60	#5	6'-6"	⌋
x1(E)	80	#5	5'-0"	⌋
x2(E)	60	#5	5'-5"	⌋
Reinforcement Bars, Epoxy Coated	Pound	320,120		
Concrete Superstructure	Cu. Yd.	1,199.1		

Bars indicated thus 1 x 5-#8 etc. indicates 1 line of bars with 5 lengths per line.

**SECTION THRU PARAPET**



SECTION A-A (at North Abutment)



SECTION A-A (at South Abutment)

DESIGNED - DAVID H. RICHTER  
CHECKED - JUSTIN T. BELUE  
DRAWN - MICHAEL B. MOSSMAN  
CHECKED - J.T.B. / D.H.R.

EXAMINED  
PASSED  
ACTING ENGINEER OF BRIDGE DESIGN  
ACTING ENGINEER OF BRIDGES AND STRUCTURES

DATE - OCTOBER 4, 2013  
REVISED -  
REVISED -

STATE OF ILLINOIS  
DEPARTMENT OF TRANSPORTATION

SUPERSTRUCTURE DETAILS  
STRUCTURE NO. 046 - 0135 (NB) & 046 - 0136 (SB)

SHEET NO. 21 OF 79 SHEETS

F.A.I. R.T.E. SECTION COUNTY TOTAL SHEETS SHEET NO.  
57 (140)BR&BR-1 KANKAKEE 183 61  
CONTRACT NO. 66750  
ILLINOIS FED. AID PROJECT