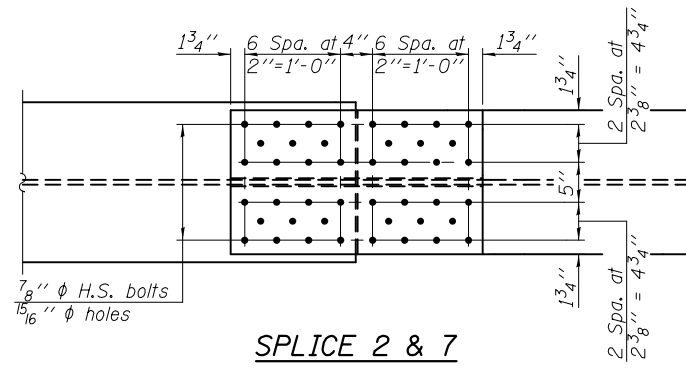


SPLICE 1 & 8

PLAN

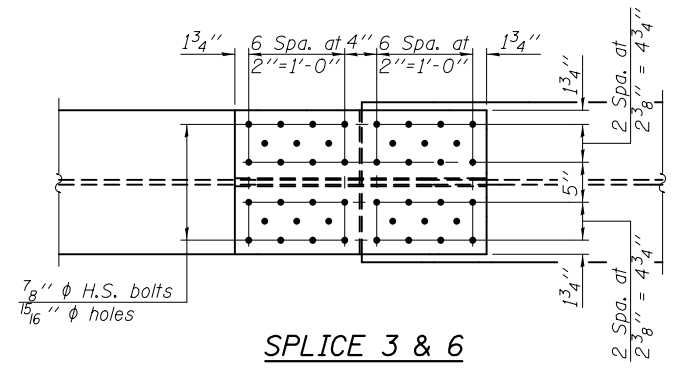
(Looking at top of top flange)



SPLICE 2 & 7

PLAN

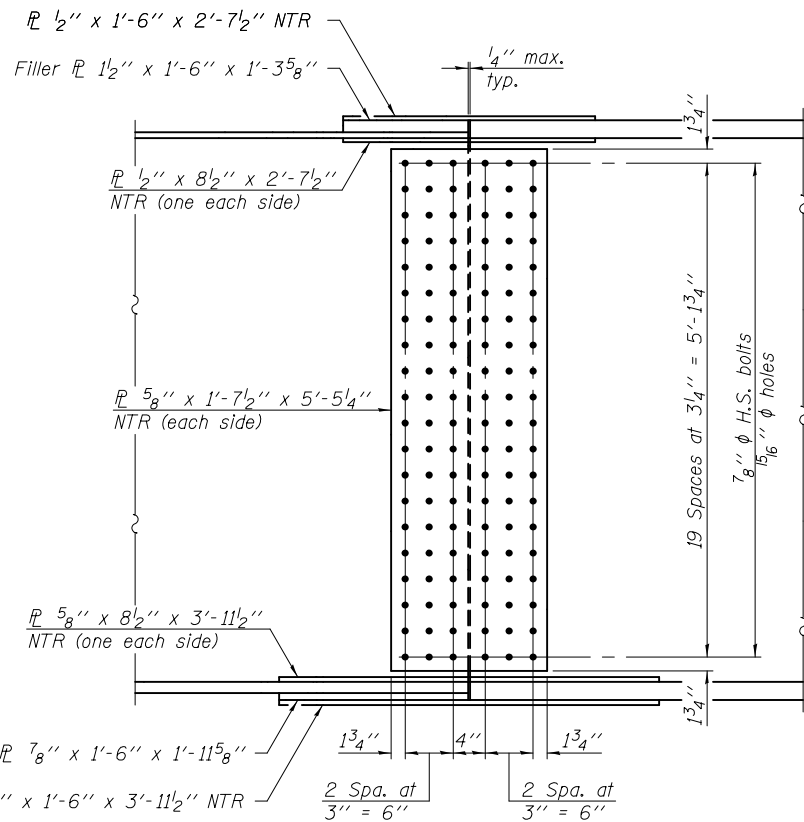
(Looking at top of top flange)



SPLICE 3 & 6

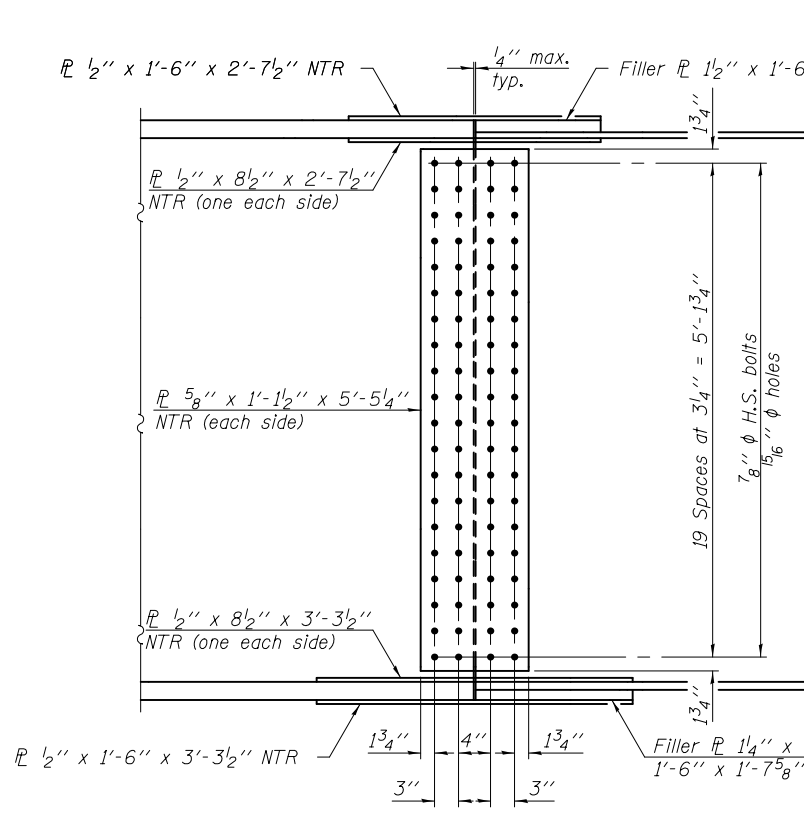
PLAN

(Looking at top of top flange)



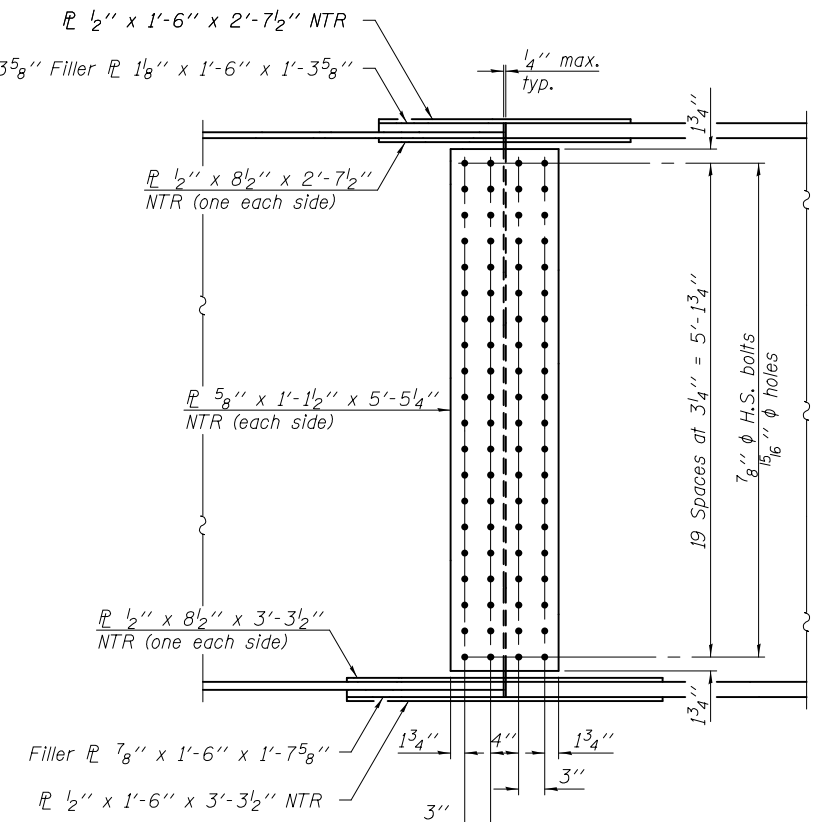
SPLICE 1 & 8

ELEVATION



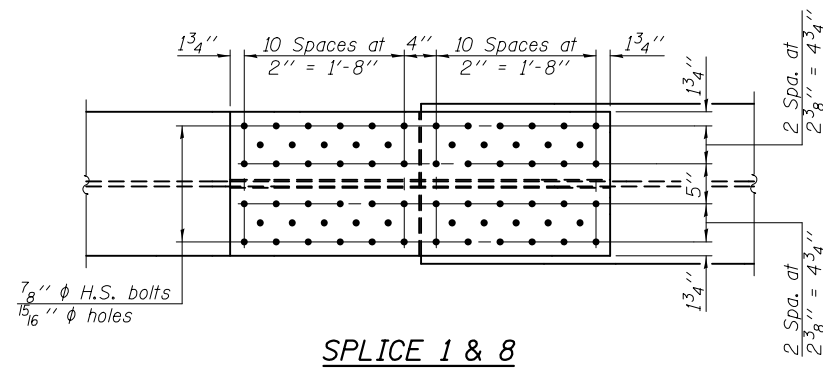
SPLICE 2 & 7

ELEVATION



SPLICE 3 & 6

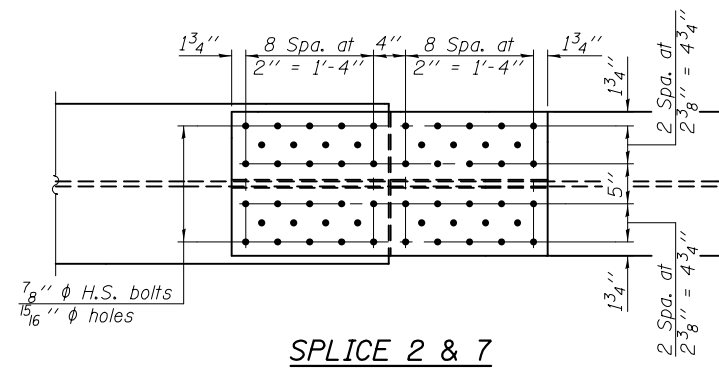
ELEVATION



SPLICE 1 & 8

PLAN

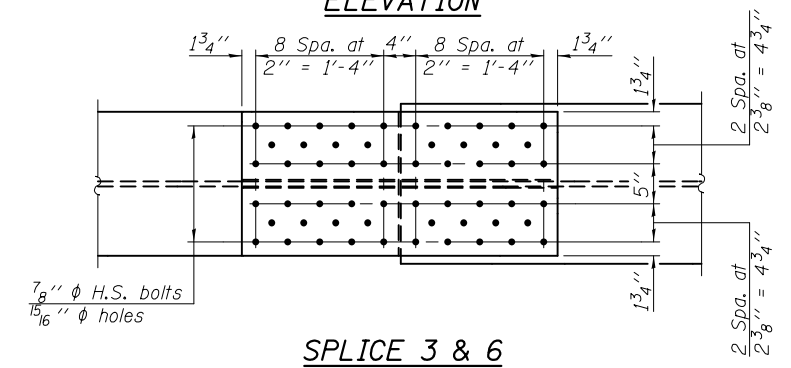
(Looking at bottom of bottom flange)



SPLICE 2 & 7

PLAN

(Looking at bottom of bottom flange)



SPLICE 3 & 6

PLAN

(Looking at bottom of bottom flange)

Notes:
 Load carrying components designated "NTR" shall conform to the Impact Testing Requirement, Zone 2.
 All splice plates, including filler plates, shall be AASHTO M270, Gr. 50W.

| | |
|-----------------------------|---|
| DESIGNED - DAVID H. RICHTER | EXAMINED - <i>Joanne F. [Signature]</i> |
| CHECKED - JUSTIN T. BELUE | PASSED - <i>Carl [Signature]</i> |
| DRAWN - MICHAEL B. MOSSMAN | |
| CHECKED - J.T.B. / D.H.R. | |

| | |
|------------------------|-----------|
| DATE - OCTOBER 4, 2013 | REVISIONS |
| | REVISIONS |

STATE OF ILLINOIS
DEPARTMENT OF TRANSPORTATION

STRUCTURAL STEEL DETAILS
STRUCTURE NO. 046 - 0135 (NB) & 046 - 0136 (SB)

SHEET NO. 36 OF 79 SHEETS

| F.A.I. R.T.E. | SECTION | COUNTY | TOTAL SHEETS | SHEET NO. |
|---------------------------|--------------|----------|--------------|-----------|
| 57 | (140)BR&BR-1 | KANKAKEE | 183 | 76 |
| CONTRACT NO. 66750 | | | | |
| ILLINOIS FED. AID PROJECT | | | | |