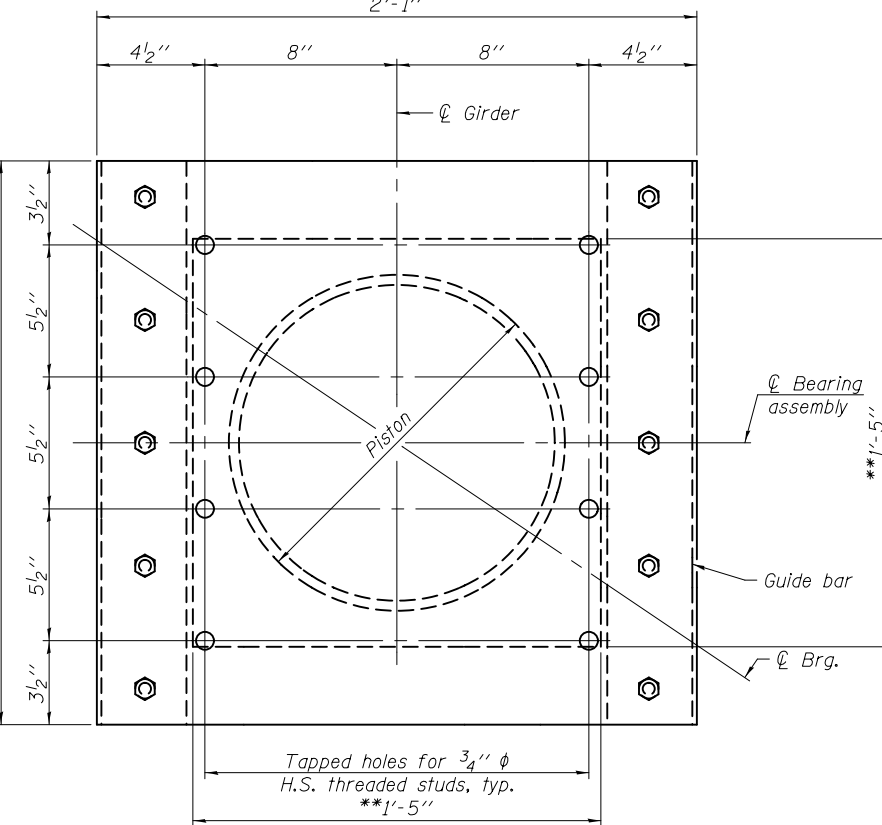
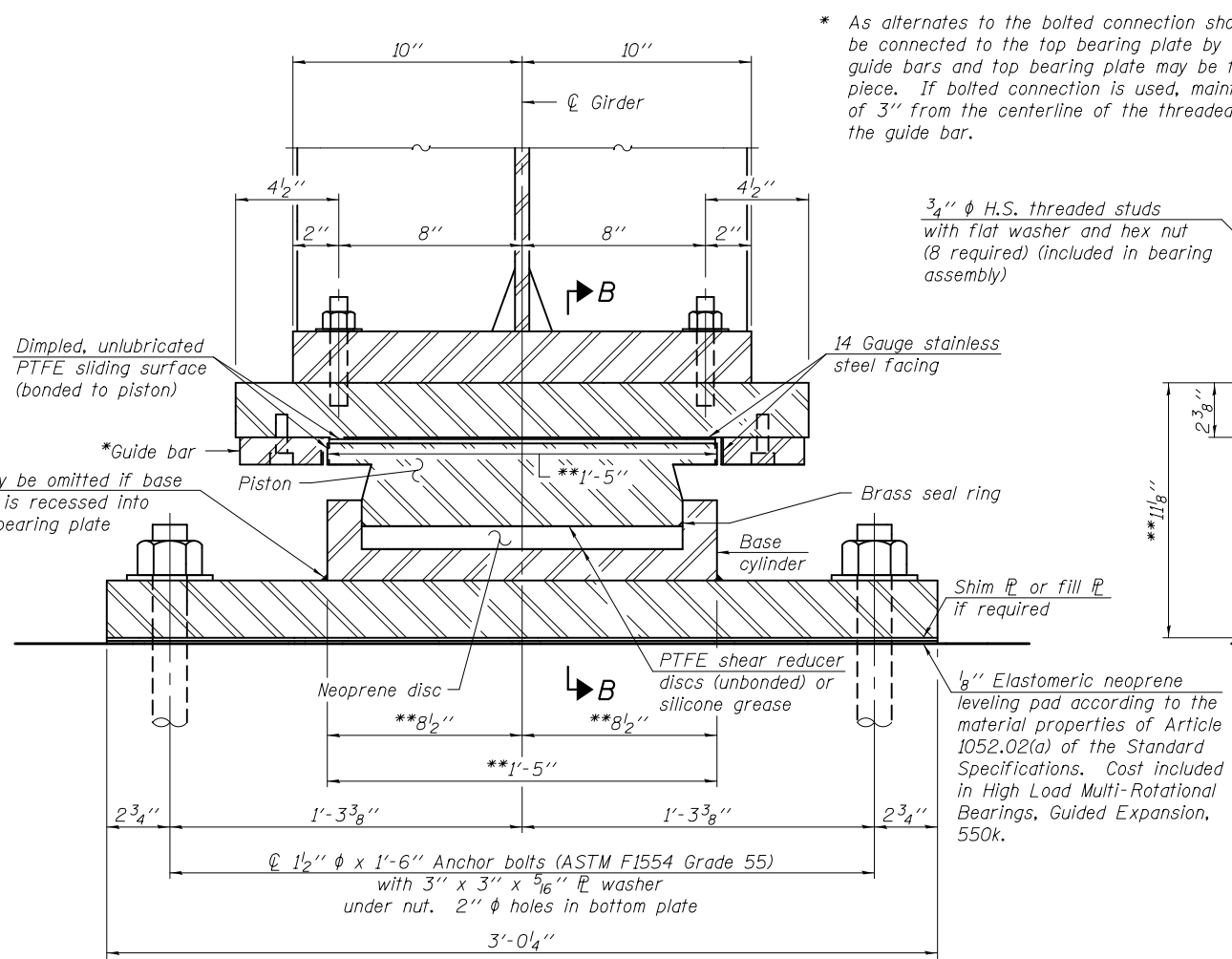


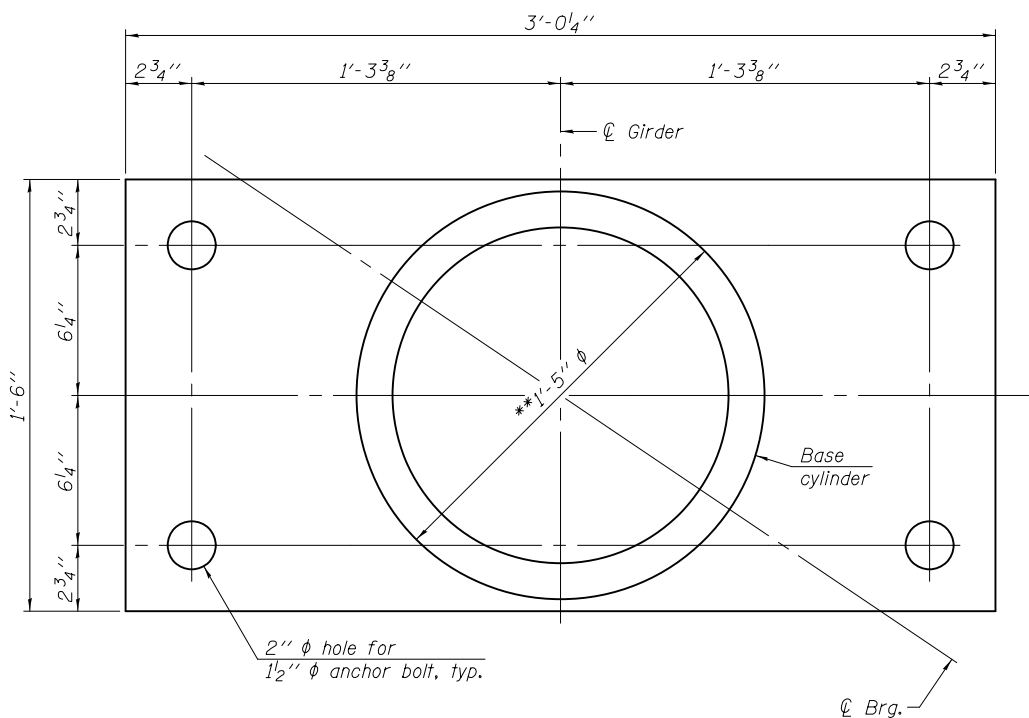
ELEVATION



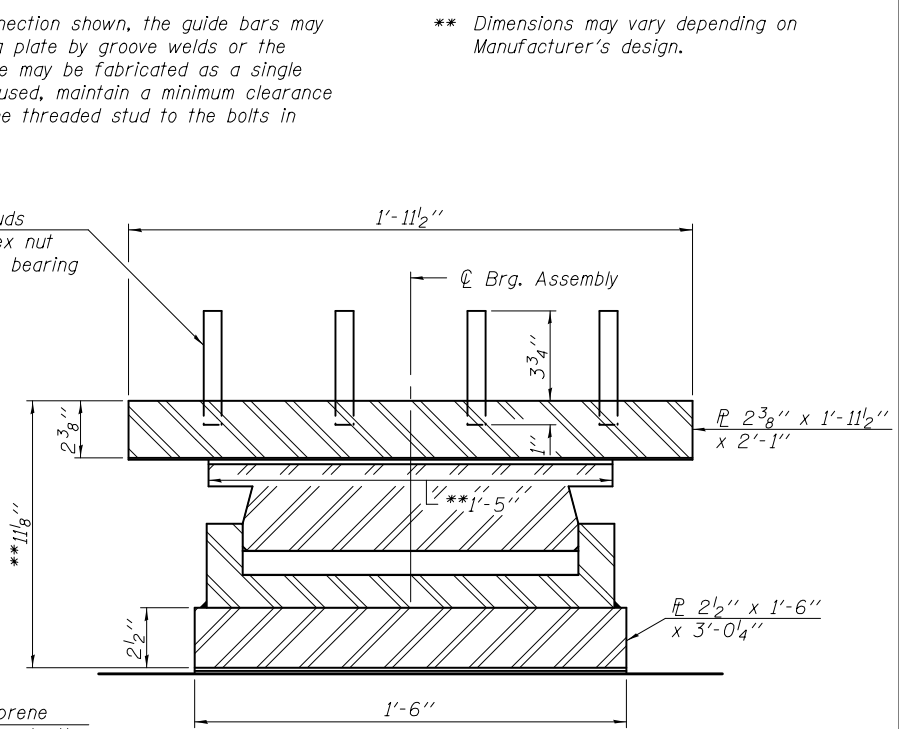
TOP BEARING PLATE AND PISTON PLAN



SECTION A-A



BOTTOM BEARING PLATE AND BASE CYLINDER PLAN



SECTION B-B

(Guide bar and girder omitted for clarity)

Notes:

Anchor bolts shall be ASTM F1554 all-thread (or an Engineer-approved alternate material) of the grade(s) and diameter(s) specified. The corresponding specified grade of AASHTO M314 anchor bolts may be used in lieu of ASTM F1554.

Drilled and set anchor bolts shall be installed according to Article 521.06 of the Standard Specifications.

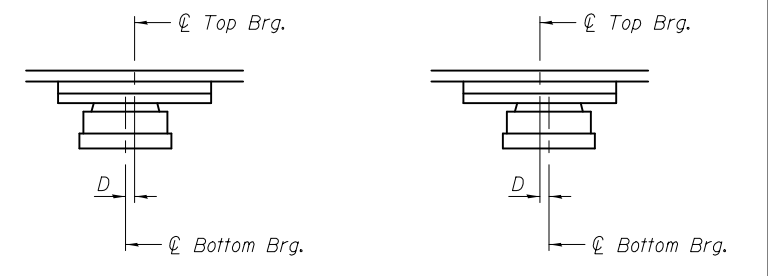
For anchor bolt locations, see sheets 53 & 54 of 79.

The structural steel plates of the Bearing Assembly shall conform to the requirements of AASHTO M 270, Grade 50.

Provide 5/8" x 1'-6" x 3'-0 1/4" fill plate at girder 4.

Two 1/8" adjusting shims shall be provided for each bearing in addition to all other plates or shims and placed as shown on bearing details.

Bearing dimensions and details shown are for a pot type HLMR bearing. Disc type HLMR bearing dimensions and details will vary.



SETTING ANCHOR BOLTS AT EXP. BRG.

D = 1/8" per each 100' of expansion for every 15° temp. change from the normal temp. of 50° F.

DESIGN DATA

Bearing Manufacturer Design Criteria	Pier 1
Vertical Design Load (kips)	523
Horizontal Design Load (kips), H _u	105
Design Rotation (rad), θ _u	0.0074
Total Required Movement (in.)	4 1/2

BILL OF MATERIAL

Item	Unit	Total
High Load Multi-Rotational Bearings, Guided Expansion, 550k	Each	12
Anchor Bolts, 1 1/2"	Each	48

* As alternates to the bolted connection shown, the guide bars may be connected to the top bearing plate by groove welds or the guide bars and top bearing plate may be fabricated as a single piece. If bolted connection is used, maintain a minimum clearance of 3" from the centerline of the threaded stud to the bolts in the guide bar.

** Dimensions may vary depending on Manufacturer's design.

DESIGNED - DAVID H. RICHTER	EXAMINED - <i>James F. Joffe</i>	DATE - OCTOBER 4, 2013
CHECKED - JUSTIN T. BELUE	PASSED - <i>Carl Berger</i>	REVISIONS -
DRAWN - MICHAEL B. MOSSMAN	ACTING ENGINEER OF BRIDGES AND STRUCTURES	REVISIONS -
CHECKED - J.T.B. / D.H.R.		

STATE OF ILLINOIS
DEPARTMENT OF TRANSPORTATION

PIER 1 BEARING DETAILS
STRUCTURE NO. 046 - 0135 (NB) & 046 - 0136 (SB)
SHEET NO. 40 OF 79 SHEETS

F.A.I. R.T.E.	SECTION	COUNTY	TOTAL SHEETS	SHEET NO.
57	(140)BR&BR-1	KANKAKEE	183	80
			CONTRACT NO. 66750	
ILLINOIS FED. AID PROJECT				