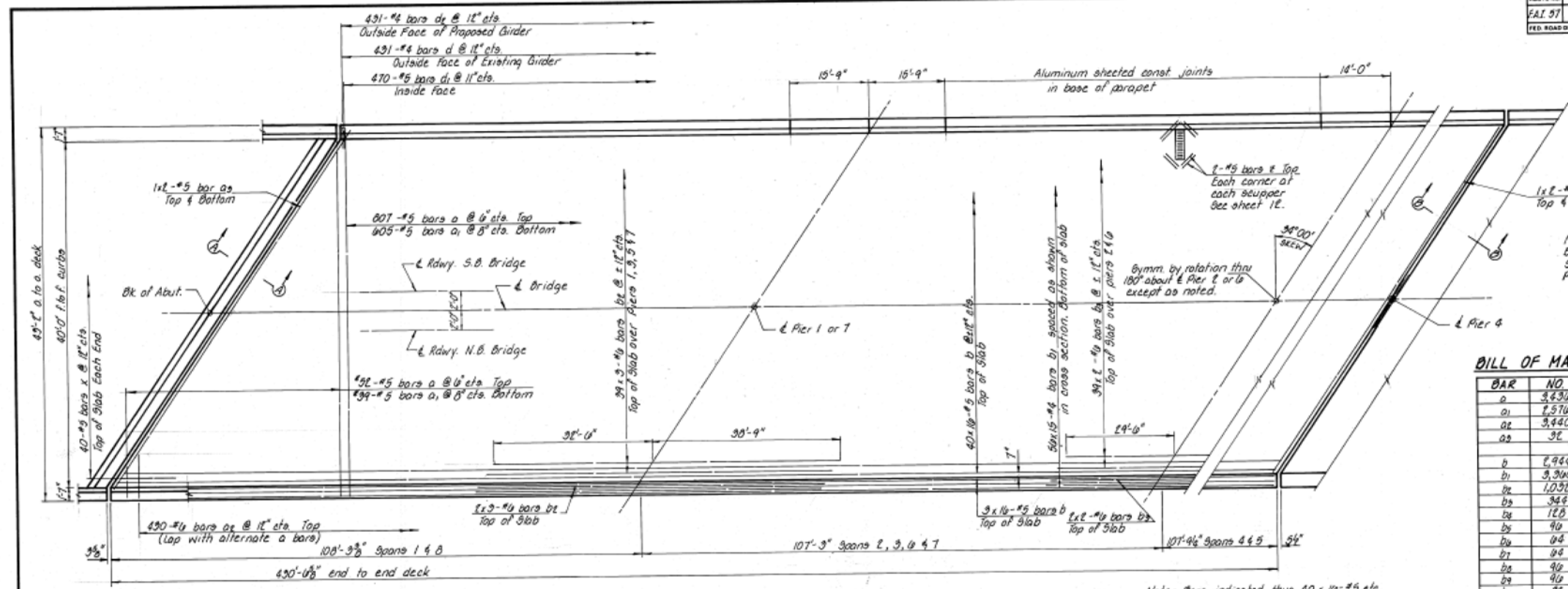


ROUTE NO.	SECTION	COUNTY	TOTAL SHEETS	SHEET NO.
FAI 57	140-BR	KANKAKEE	55	27
FED ROAD DIST NO. 1	ILLINOIS PROJECT			

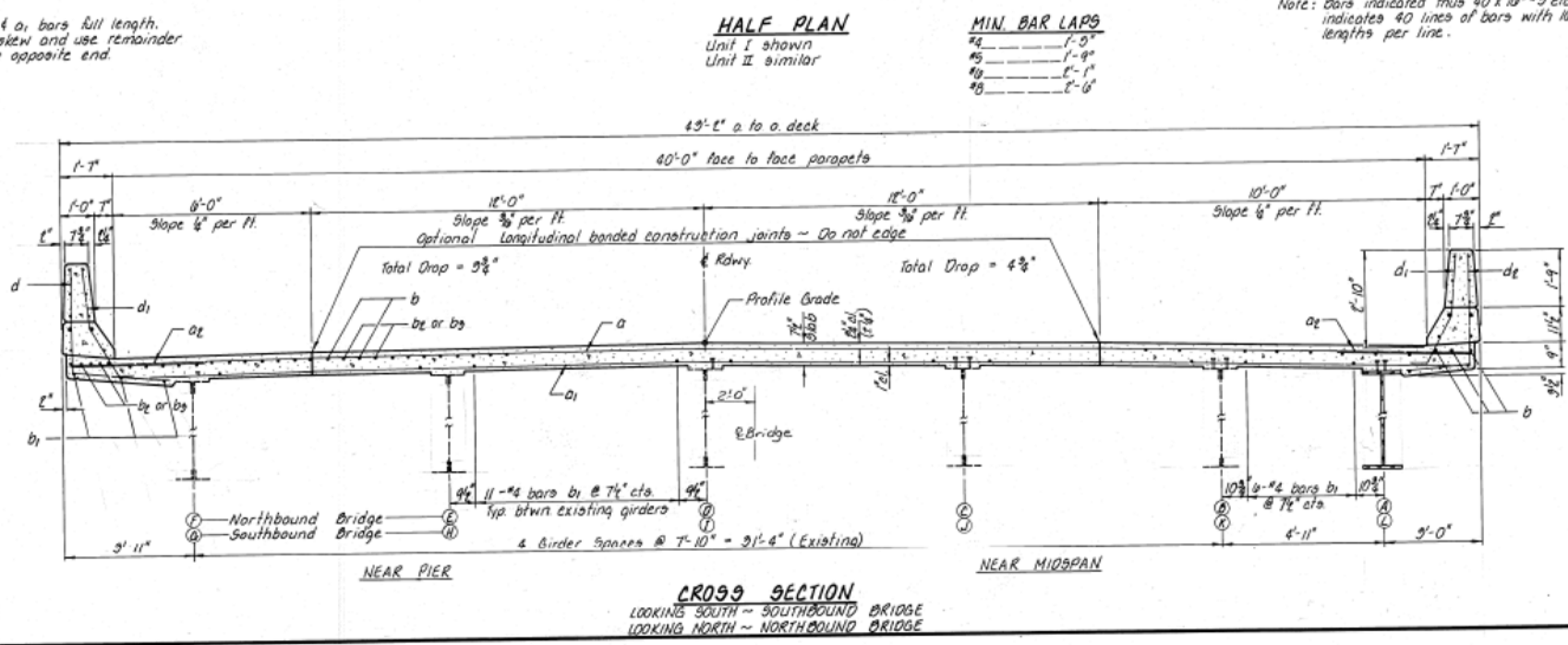
Sheet 8 of 30



**BILL OF MATERIAL - SUPERSTRUCTURE**

BAR NO.	SIZE	LENGTH	SHAPE
a	#5	41'-0"	
a1	#5	40'-0"	
a2	#5	4'-11"	
a3	#5	28'-9"	
b	#5	28'-7"	
b1	#6	30'-0"	
b2	#6	25'-2"	
b3	#5	30'-7"	
b4	#5	24'-5"	
b5	#5	32'-5"	
b6	#5	19'-5"	
b7	#5	19'-3"	
b8	#5	20'-11"	
b9	#5	27'-5"	
b10	#5	19'-8"	
b11	#5	19'-8"	
d	#4	6'-1"	L
d1	#5	9'-11"	L
d2	#6	9'-2"	L
e	#4	18'-2"	
e1	#4	18'-5"	
e2	#4	18'-1"	
e3	#4	13'-8"	
x	#5	8'-1"	
z	#5	2'-0"	
Class X Concrete			Cu Yd 2,184.5
Reinforcement Bars (Epoxy Coated) Round			560,360

All reinforcement bars used in the superstructure shall be epoxy coated.



**SUPERSTRUCTURE**  
 F.A.I. ROUTE 57  
 SECTION 140-BR  
 KANKAKEE COUNTY  
 STATION 160+90

**COLLINS AND RICE**  
 CONSULTING ENGINEERS

DESIGNED A.R.K. CHECKED F.S. & R.M.O.  
 DRAWN M.G. DATE 12-15-84 NO. 1874

**FOR INFORMATION ONLY**