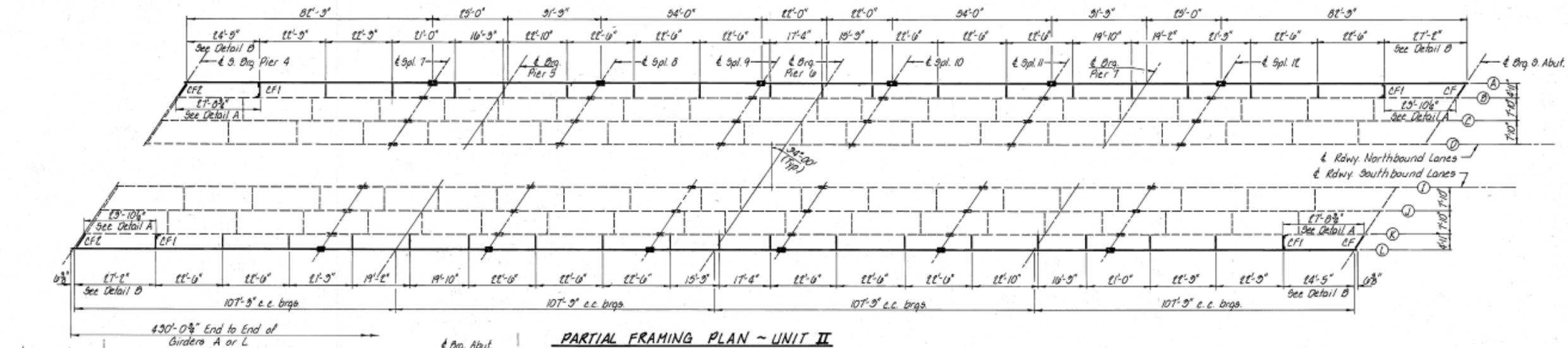
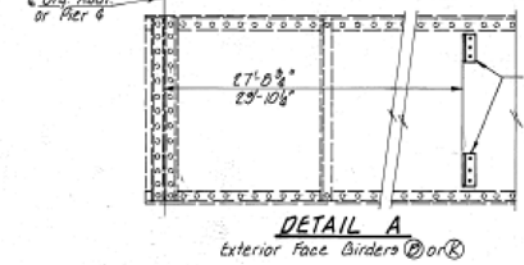


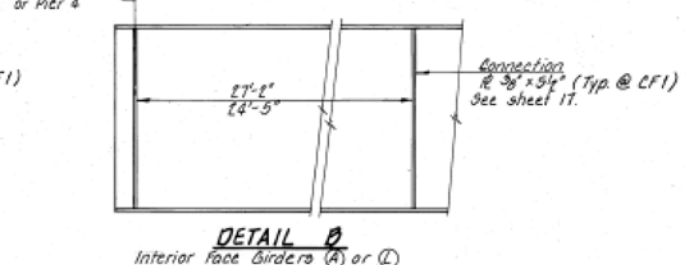
PARTIAL FRAMING PLAN - UNIT I



PARTIAL FRAMING PLAN - UNIT II



DETAIL A
exterior face Girders A or L



DETAIL B
interior face Girders A or L

FRAMING PLAN	
F.A.I. ROUTE 57	
SECTION 140 - BR	
KANKAKEE COUNTY	
STATION 160 + 90	
COLLINS AND RICE	
CONSULTING ENGINEERS	
DESIGNED A.R.K.	CHECKED F.S. & R.M.B.
DRAWN M.B.	DATE 12-13-84 NO. 1874

FOR INFORMATION ONLY

FILE NAME =	USER NAME = #USER#	DESIGNED -	REVISED -	STATE OF ILLINOIS DEPARTMENT OF TRANSPORTATION	REPAIR BRIDGE PLANS 1987	F.A.I. RTE. 57	SECTION (140BR, BR-1 & II)	COUNTY KANKAKEE	TOTAL SHEETS 183	SHEET NO. 140	
*FILEL#	PLOT SCALE = #SCALE#	DRAWN -	REVISED -			SCALE: _____	SHEET _____	OF _____	SHEETS TO STA. _____	CONTRACT NO. 66750	
*MODELNAME#	PLOT DATE = #DATE#	CHECKED -	REVISED -			ILLINOIS FED. AID PROJECT					
		DATE -	REVISED -								