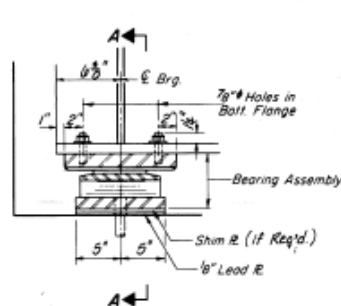
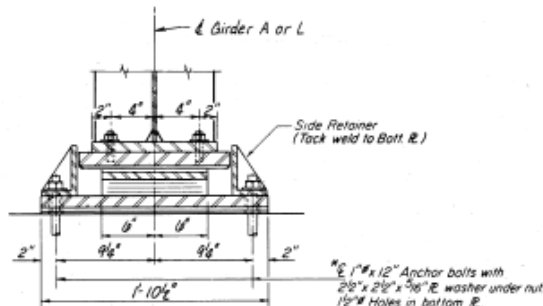


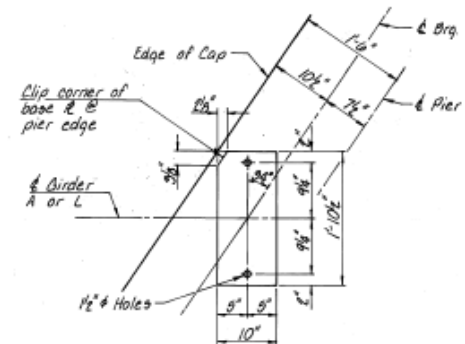
ROUTE NO.	SECTION	COUNTY	TOTAL SHEETS	SHEET NO.
FAI 57	140-BR	KANKAKEE	55	38
FED. ROAD DIST. NO. 7			ILLINOIS PROJECT	
Sheet 14 of 38				



SECTION AT N. ABUT. or PIER 4 (UNIT I)
S. ABUT. or PIER 4 (UNIT II)
TYPE II TFE ELASTOMERIC EXP. BRG.
 8 Required



SECTION A-A

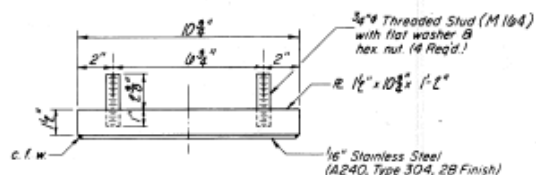


BASE PLATE PLAN
 @ Pier 4 only

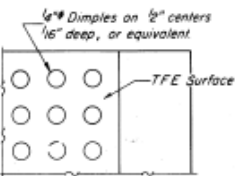
BILL OF MATERIAL

ITEM	UNIT	QUANTITY
Elastomeric Bearing Assembly Type II	Each	8

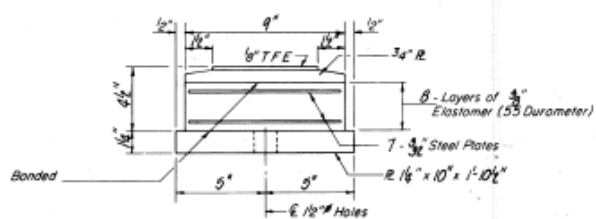
*Note: After girders have been erected holes of expansion bearings shall be drilled and anchor bolts grouted in place. See sheet E1 for Anchor Bolt installation.



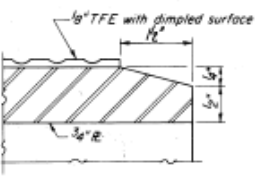
TOP BEARING ASSEMBLY



PLAN-TFE SURFACE

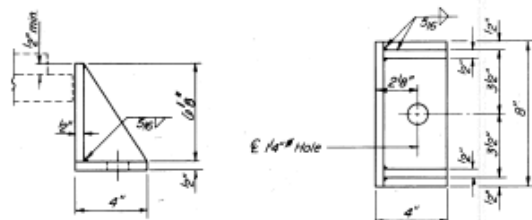


BOTTOM BEARING ASSEMBLY



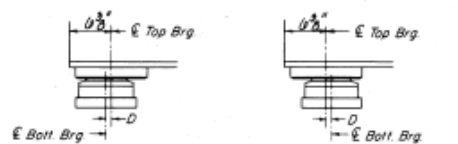
SECTION THRU TFE

Note: The 1/2" TFE sheet shall be bonded directly to the top steel plate with a two-component, medium viscosity epoxy resin, conforming to the requirements of the Federal Specification MMM-A-134, Type I. The bond agent shall be applied on the full area of the contact surfaces. Bonding of 1/2" TFE sheet during vulcanizing process will be permitted provided the process and method of adjusting assembly height is approved by the Engineer.

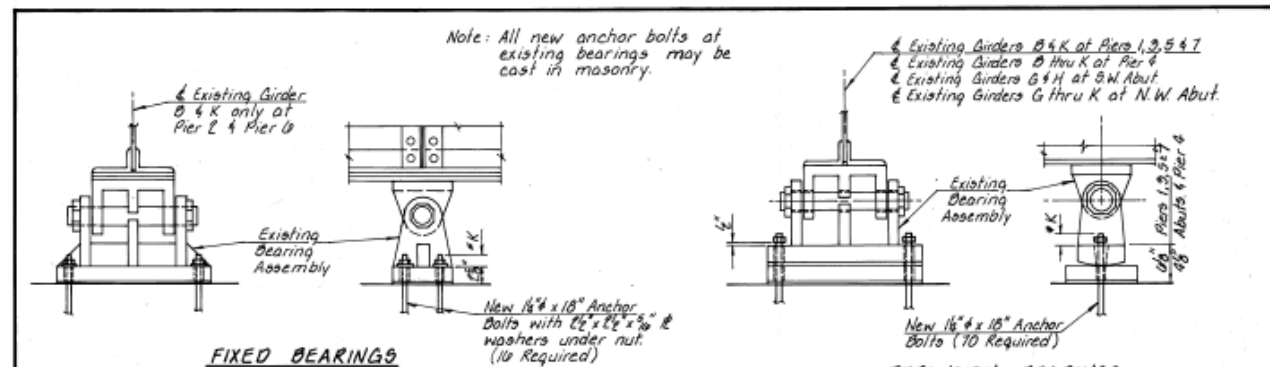


SIDE RETAINER

Note: An equivalent rolled angle with stiffeners will be allowed in lieu of welded plate retainer assembly.



SETTING ANCHOR BOLTS AT EXP. BRG.
 D = 1/8" per each 100' of expansion for every 15° temp. change from the normal temp. of 50°F



FIXED BEARINGS

EXPANSION BEARINGS

LOCATION	JACKING LOAD/GIRDER
Abutment or Pier 4	12,000*
Piers 1, 3, 5 or 7	34,500*
Piers 2 or 6	18,500*

Note: All new anchor bolts at existing bearings may be cast in masonry.

* Existing Girders B & K at Piers 1, 3, 5 & 7
 * Existing Girders D thru K at Pier 4
 * Existing Girders G & H at S.W. Abut.
 * Existing Girders G thru K at N.W. Abut.

Note: See "Setting Anchor Bolts of Exp. Brg." below for resetting details.

* See sheet E1 for K dimension and anchor bolt installation if anchor bolts are not cast into masonry.

JACKING AND SHORING EXISTING GIRDERS

BEARING DETAILS	
F.A.I. ROUTE 57 SECTION 140-BR KANKAKEE COUNTY STATION 290+90	
COLLINS AND RICE CONSULTING ENGINEERS	
DESIGNED A.R.K.	CHECKED F.B. & R.H.B.
DRAWN M.G.	DATE 12-15-88 NO. 1074

FOR INFORMATION ONLY

FILE NAME -	USER NAME - \$USER\$	DESIGNED -	REVISED -	STATE OF ILLINOIS DEPARTMENT OF TRANSPORTATION	REPAIR BRIDGE PLANS 1987	F.A.I. RTE.	SECTION	COUNTY	TOTAL SHEETS	SHEET NO.
\$FILEL\$		DRAWN -	REVISED -			57	(140BR, BR-1 & II)	KANKAKEE	183	143
\$MODELNAME\$		CHECKED -	REVISED -			SCALE: _____ SHEET _____ OF _____ SHEETS STA. _____ TO STA. _____		CONTRACT NO. 66750		
		DATE -	REVISED -			ILLINOIS FED. AID PROJECT				