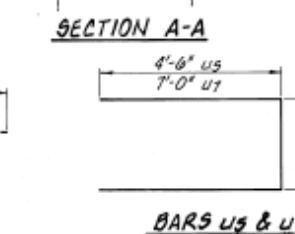
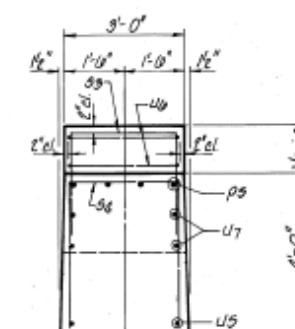


BAR	A	D
93	8'-8"	8'-8"
94	9'-8"	8'-8"
95	8'-7"	8'-8"
96	7'-7"	8'-8"
97	8'-7"	8'-8"
98	7'-11"	8'-8"

* New concrete to be built up to the same elevation as the existing concrete before removal.



**BILL OF MATERIAL
PIERS 1 THRU 7 - SOUTHBOUND**

BAR	NO.	SIZE	LENGTH	SHAPE
p5	20	#9	11'-10"	U
u5	4	#5	21'-0"	U
u6	20	#5	8'-11"	U
u7	40	#5	10'-0"	U
u8	40	#5	7'-10"	U
u9	30	#5	5'-10"	U
u10	6	#6	7'-10"	U
u11	4	#6	8'-0"	U
u12	7	#6	11'-7"	U
u13	14	#6	15'-9"	U
u14	14	#6	16'-7"	U
Concrete Removal		Cu. Yd.	32	
Class X Concrete		Cu. Yd.	40.3	
Reinforcement Bars		Pounds	3,980	
Jacking & Shoring Exist Girders Each			10	
Repair Concrete Structures Sq. Ft.			278	

SOUTHBOUND PIER DETAILS
 F.A.I. ROUTE 57
 SECTION 140-BR
 KANKAKEE COUNTY
 STATION 100+90

**COLLINS AND RICE
CONSULTING ENGINEERS**

DESIGNED A.R.K. CHECKED F.D. & R.M.B.
 DRAWN M.B. DATE 12-15-84 NO. 1874

FOR INFORMATION ONLY