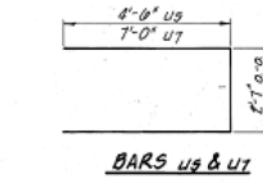
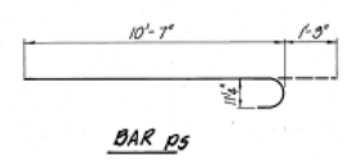
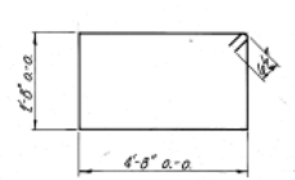
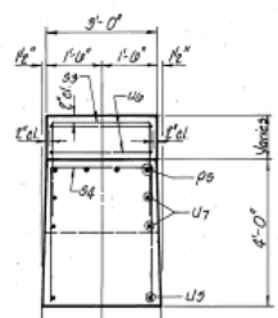
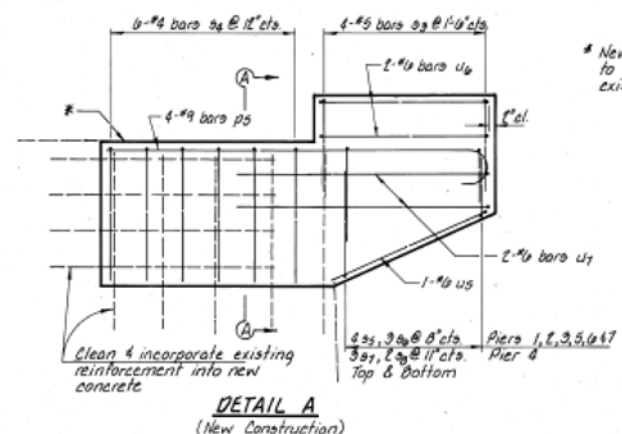
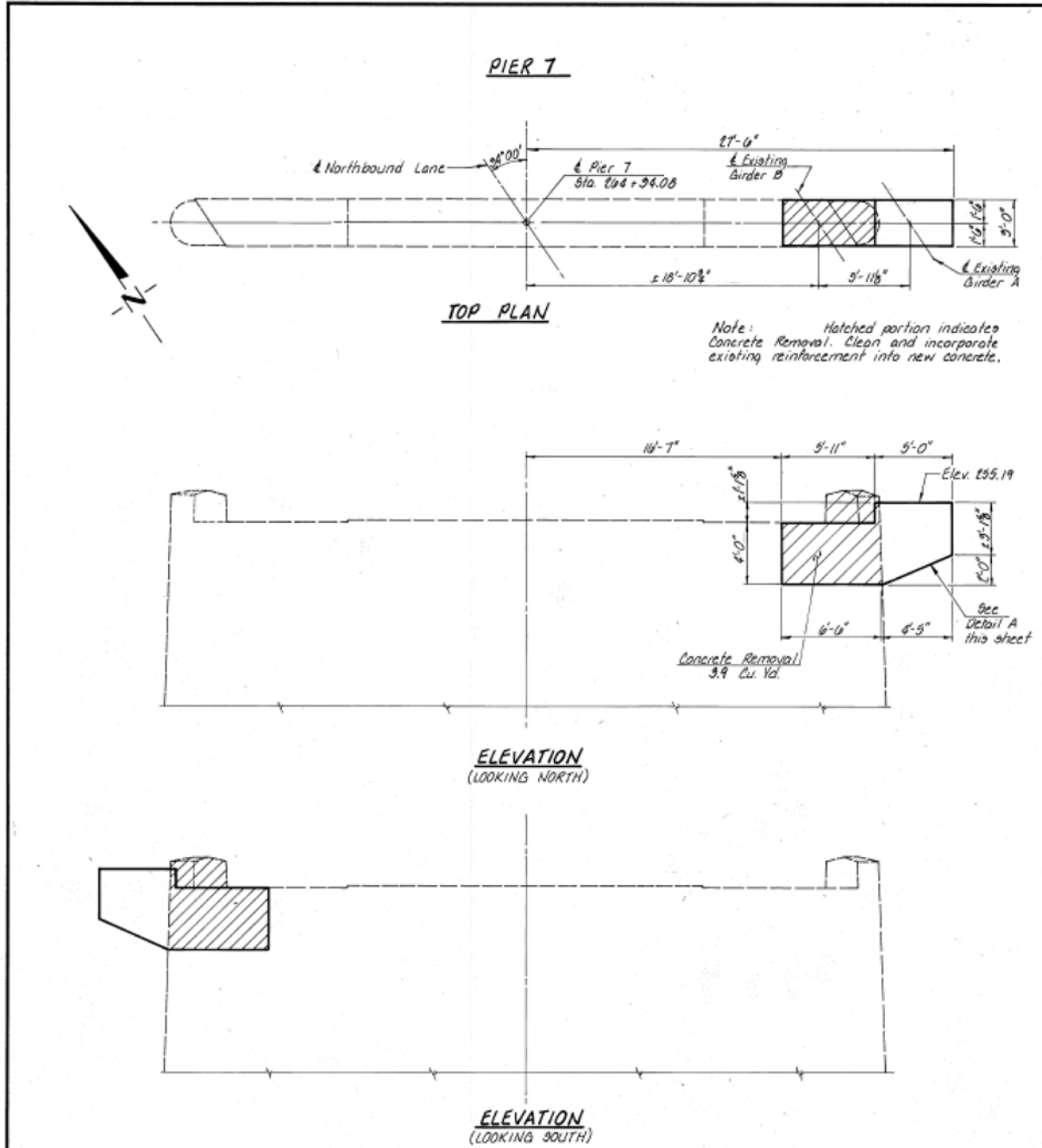


| | | | | |
|-----------------------|------------------|----------|----------------|-----------|
| ROUTE NO. | SECTION | COUNTY | TOTAL SHEETS | SHEET NO. |
| F.A.I. 57 | 140-BR | KANKAKEE | 58 | 54 |
| FED. ROAD DIST. NO. 7 | ILLINOIS PROJECT | | Sheet 35 of 30 | |



BAR 83, 94, 95, 96, 87 & 88

| BAR | A | D |
|-----|--------|-------|
| 83 | 2'-8" | 2'-7" |
| 94 | 3'-8" | 2'-8" |
| 95 | 2'-7" | 2'-8" |
| 96 | 3'-0" | 2'-8" |
| 87 | 1'-7" | 2'-8" |
| 88 | 2'-7" | 2'-8" |
| 89 | 1'-11" | 2'-8" |

**BILL OF MATERIAL
 PIERS 1 THRU 7 - NORTHBOUND**

| BAR | NO. | SIZE | LENGTH | SHAPE |
|----------------------------------|-----|---------|---------|-------|
| P5 | 20 | #4 | 11'-10" | □ |
| U6 | 4 | #5 | 21'-0" | □ |
| U3 | 20 | #5 | 8'-11" | □ |
| U4 | 42 | #5 | 10'-0" | □ |
| U5 | 48 | #5 | 7'-10" | □ |
| U6 | 30 | #5 | 5'-10" | □ |
| U7 | 6 | #6 | 7'-10" | □ |
| U8 | 6 | #6 | 0'-0" | □ |
| U5 | 7 | #6 | 11'-7" | □ |
| U6 | 14 | #6 | 15'-9" | □ |
| U7 | 14 | #6 | 16'-7" | □ |
| Concrete Removal | | Cu. Yd. | 3.9 | |
| Class X Concrete | | Cu. Yd. | 40.3 | |
| Reinforcement Bars | | Pounds | 3,380 | |
| Jacking & Shoring Exist. Girders | | Each | 10 | |
| Repair Concrete Structures | | Sq. Ft. | 320 | |

NORTHBOUND PIER DETAILS
 F.A.I. ROUTE 57
 SECTION 140-BR
 KANKAKEE COUNTY
 STATION 200+90

**COLLINS AND RICE
 CONSULTING ENGINEERS**

DESIGNED A.R.K. CHECKED P.S. & R.M.B.
 DRAWN M.S. DATE 11-19-84 NO. 1874

FOR INFORMATION ONLY