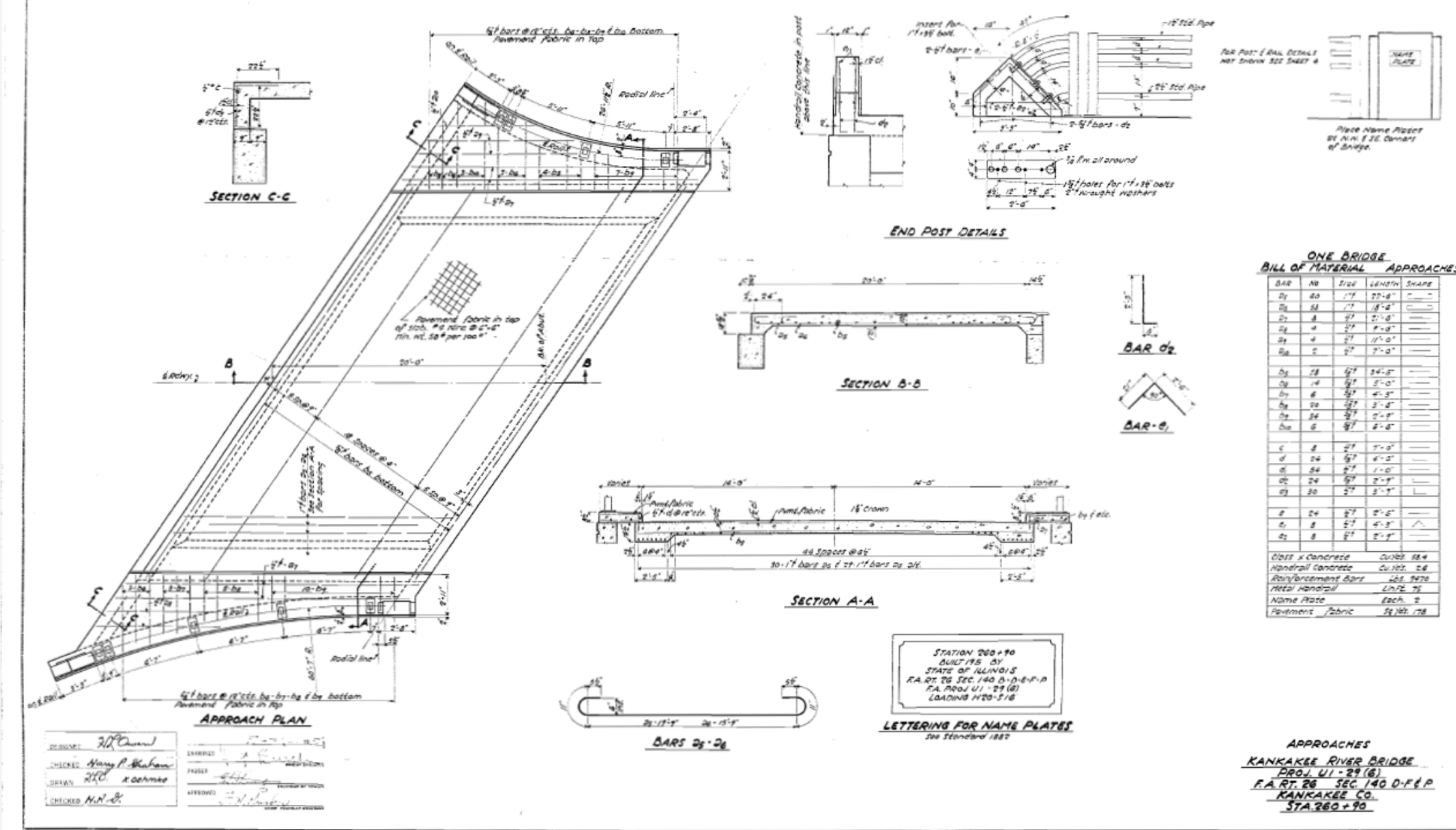


STATE OF ILLINOIS  
DEPARTMENT OF PUBLIC WORKS & BUILDINGS  
DIVISION OF HIGHWAYS

DATE	SCALE	NO.	REV.	SHEET NO.
12/27/55	AS SHOWN	1	1	155
BY	DATE	BY	DATE	
W. J. ...				



ONE BRIDGE  
BILL OF MATERIAL APPROACHES

BAR NO	SIZE	LENGTH	SHAPE
D <sub>1</sub>	1 1/2"	27'-6"	—
D <sub>2</sub>	1 1/2"	18'-0"	—
D <sub>3</sub>	1"	2'-0"	—
D <sub>4</sub>	1"	8'-0"	—
D <sub>5</sub>	1"	11'-0"	—
D <sub>6</sub>	1"	7'-0"	—
D <sub>7</sub>	1 1/2"	34'-0"	—
D <sub>8</sub>	1 1/2"	2'-0"	—
D <sub>9</sub>	1 1/2"	4'-0"	—
D <sub>10</sub>	1 1/2"	2'-0"	—
D <sub>11</sub>	1 1/2"	2'-0"	—
D <sub>12</sub>	1 1/2"	2'-0"	—
C	2"	7'-0"	—
D	2 1/2"	4'-0"	—
E	2 1/2"	1'-0"	—
D <sub>13</sub>	2 1/2"	2'-0"	—
D <sub>14</sub>	2 1/2"	2'-0"	—
D <sub>15</sub>	2 1/2"	2'-0"	—
D <sub>16</sub>	2 1/2"	2'-0"	—
D <sub>17</sub>	2 1/2"	2'-0"	—
D <sub>18</sub>	2 1/2"	2'-0"	—
D <sub>19</sub>	2 1/2"	2'-0"	—
D <sub>20</sub>	2 1/2"	2'-0"	—
D <sub>21</sub>	2 1/2"	2'-0"	—
D <sub>22</sub>	2 1/2"	2'-0"	—
D <sub>23</sub>	2 1/2"	2'-0"	—
D <sub>24</sub>	2 1/2"	2'-0"	—
D <sub>25</sub>	2 1/2"	2'-0"	—
D <sub>26</sub>	2 1/2"	2'-0"	—
D <sub>27</sub>	2 1/2"	2'-0"	—
D <sub>28</sub>	2 1/2"	2'-0"	—
D <sub>29</sub>	2 1/2"	2'-0"	—
D <sub>30</sub>	2 1/2"	2'-0"	—
D <sub>31</sub>	2 1/2"	2'-0"	—
D <sub>32</sub>	2 1/2"	2'-0"	—
D <sub>33</sub>	2 1/2"	2'-0"	—
D <sub>34</sub>	2 1/2"	2'-0"	—
D <sub>35</sub>	2 1/2"	2'-0"	—
D <sub>36</sub>	2 1/2"	2'-0"	—
D <sub>37</sub>	2 1/2"	2'-0"	—
D <sub>38</sub>	2 1/2"	2'-0"	—
D <sub>39</sub>	2 1/2"	2'-0"	—
D <sub>40</sub>	2 1/2"	2'-0"	—
D <sub>41</sub>	2 1/2"	2'-0"	—
D <sub>42</sub>	2 1/2"	2'-0"	—
D <sub>43</sub>	2 1/2"	2'-0"	—
D <sub>44</sub>	2 1/2"	2'-0"	—
D <sub>45</sub>	2 1/2"	2'-0"	—
D <sub>46</sub>	2 1/2"	2'-0"	—
D <sub>47</sub>	2 1/2"	2'-0"	—
D <sub>48</sub>	2 1/2"	2'-0"	—
D <sub>49</sub>	2 1/2"	2'-0"	—
D <sub>50</sub>	2 1/2"	2'-0"	—
D <sub>51</sub>	2 1/2"	2'-0"	—
D <sub>52</sub>	2 1/2"	2'-0"	—
D <sub>53</sub>	2 1/2"	2'-0"	—
D <sub>54</sub>	2 1/2"	2'-0"	—
D <sub>55</sub>	2 1/2"	2'-0"	—
D <sub>56</sub>	2 1/2"	2'-0"	—
D <sub>57</sub>	2 1/2"	2'-0"	—
D <sub>58</sub>	2 1/2"	2'-0"	—
D <sub>59</sub>	2 1/2"	2'-0"	—
D <sub>60</sub>	2 1/2"	2'-0"	—
D <sub>61</sub>	2 1/2"	2'-0"	—
D <sub>62</sub>	2 1/2"	2'-0"	—
D <sub>63</sub>	2 1/2"	2'-0"	—
D <sub>64</sub>	2 1/2"	2'-0"	—
D <sub>65</sub>	2 1/2"	2'-0"	—
D <sub>66</sub>	2 1/2"	2'-0"	—
D <sub>67</sub>	2 1/2"	2'-0"	—
D <sub>68</sub>	2 1/2"	2'-0"	—
D <sub>69</sub>	2 1/2"	2'-0"	—
D <sub>70</sub>	2 1/2"	2'-0"	—
D <sub>71</sub>	2 1/2"	2'-0"	—
D <sub>72</sub>	2 1/2"	2'-0"	—
D <sub>73</sub>	2 1/2"	2'-0"	—
D <sub>74</sub>	2 1/2"	2'-0"	—
D <sub>75</sub>	2 1/2"	2'-0"	—
D <sub>76</sub>	2 1/2"	2'-0"	—
D <sub>77</sub>	2 1/2"	2'-0"	—
D <sub>78</sub>	2 1/2"	2'-0"	—
D <sub>79</sub>	2 1/2"	2'-0"	—
D <sub>80</sub>	2 1/2"	2'-0"	—
D <sub>81</sub>	2 1/2"	2'-0"	—
D <sub>82</sub>	2 1/2"	2'-0"	—
D <sub>83</sub>	2 1/2"	2'-0"	—
D <sub>84</sub>	2 1/2"	2'-0"	—
D <sub>85</sub>	2 1/2"	2'-0"	—
D <sub>86</sub>	2 1/2"	2'-0"	—
D <sub>87</sub>	2 1/2"	2'-0"	—
D <sub>88</sub>	2 1/2"	2'-0"	—
D <sub>89</sub>	2 1/2"	2'-0"	—
D <sub>90</sub>	2 1/2"	2'-0"	—
D <sub>91</sub>	2 1/2"	2'-0"	—
D <sub>92</sub>	2 1/2"	2'-0"	—
D <sub>93</sub>	2 1/2"	2'-0"	—
D <sub>94</sub>	2 1/2"	2'-0"	—
D <sub>95</sub>	2 1/2"	2'-0"	—
D <sub>96</sub>	2 1/2"	2'-0"	—
D <sub>97</sub>	2 1/2"	2'-0"	—
D <sub>98</sub>	2 1/2"	2'-0"	—
D <sub>99</sub>	2 1/2"	2'-0"	—
D <sub>100</sub>	2 1/2"	2'-0"	—

CLASS X Concrete Cu. Yds. 58.4  
Handrail Concrete Cu. Yds. 2.6  
Reinforcement Bars Lbs. 9570  
Metal Handrail Lbs. 75  
Name Plate Each. 2  
Pavement Fabric Sq. Yds. 178

STATION 260+90  
BUILT 1955 BY  
STATE OF ILLINOIS  
F.A. RT. 26 SEC. 140 D-F-E-P  
F.A. PROJ U1 - 29 (6)  
LOADING H20-S16

LETTERING FOR NAME PLATES  
See Standard 1887

APPROACHES  
KANKAKEE RIVER BRIDGE  
PROJ. U1 - 29 (6)  
F.A. RT. 26 SEC. 140 D-F-E-P  
KANKAKEE CO.  
STA. 260+90

DESIGNED: J.H. ...  
CHECKED: Harry P. ...  
DRAWN: J.H. ...  
CHECKED: H.P. ...

DATE: ...

FOR INFORMATION ONLY

FILE NAME -	USER NAME - \$USER\$	DESIGNED -	REVISED -	STATE OF ILLINOIS DEPARTMENT OF TRANSPORTATION	ORIGINAL BRIDGE PLANS 1955	SCALE: _____ SHEET _____ OF _____ SHEETS STA. _____ TO STA. _____	F.A.I. RTE. 57	SECTION (140)BR, BR-1 & (11)	COUNTY KANKAKEE	TOTAL SHEETS 183	SHEET NO. 155
\$FILEL\$	PLOT SCALE - \$SCALE\$	DRAWN -	REVISED -				CONTRACT NO. 66750				
\$MODELNAME\$	PLOT DATE - \$DATE\$	CHECKED -	REVISED -				ILLINOIS FED. AID PROJECT				
		DATE -	REVISED -								