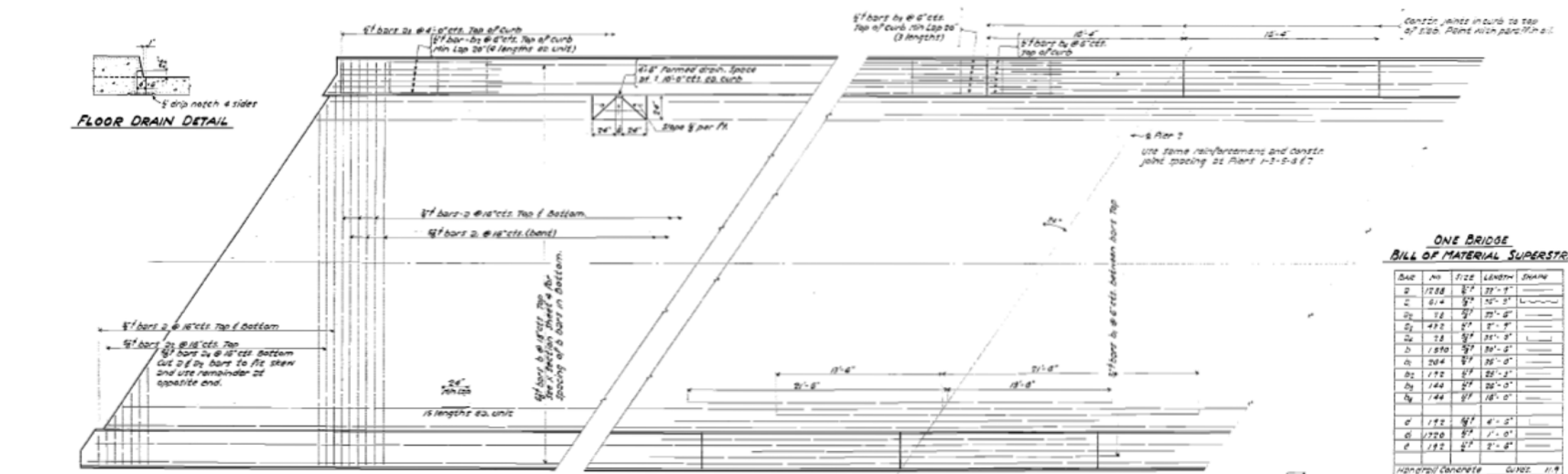
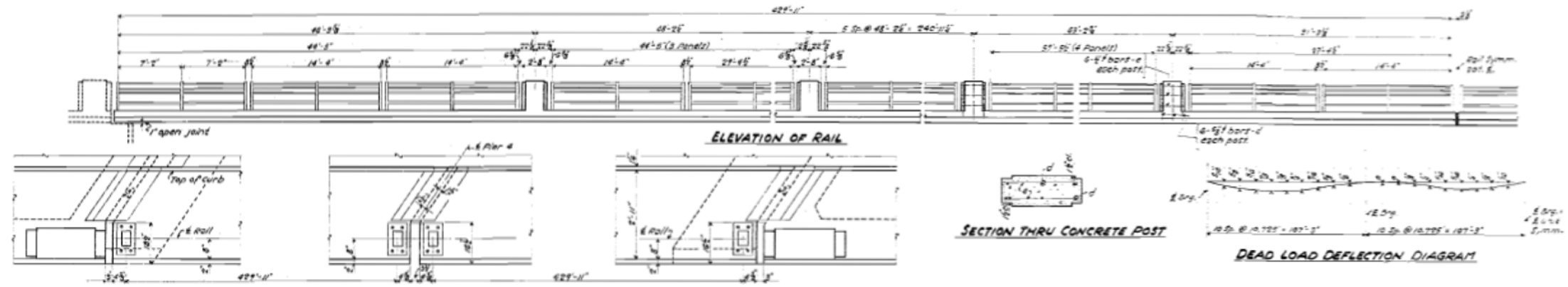


STATE OF ILLINOIS  
DEPARTMENT OF PUBLIC WORKS & BUILDINGS  
DIVISION OF HIGHWAYS

DATE	BY	REVISION
12-15-57	H.M.C.	1-1-58
1-1-58	H.M.C.	2-1-58
2-1-58	H.M.C.	3-1-58
3-1-58	H.M.C.	4-1-58
4-1-58	H.M.C.	5-1-58
5-1-58	H.M.C.	6-1-58
6-1-58	H.M.C.	7-1-58
7-1-58	H.M.C.	8-1-58
8-1-58	H.M.C.	9-1-58
9-1-58	H.M.C.	10-1-58
10-1-58	H.M.C.	11-1-58
11-1-58	H.M.C.	12-1-58



ONE BRIDGE  
BILL OF MATERIAL SUPERSTR.

BAR NO	SIZE	LENGTH	SHAPE
1	1/2"	27'-9"	—
2	1/2"	15'-0"	—
3	1/2"	25'-0"	—
4	1/2"	21'-9"	—
5	1/2"	21'-9"	—
6	1/2"	25'-0"	—
7	1/2"	21'-9"	—
8	1/2"	21'-9"	—
9	1/2"	21'-9"	—
10	1/2"	21'-9"	—
11	1/2"	21'-9"	—
12	1/2"	21'-9"	—
13	1/2"	21'-9"	—
14	1/2"	21'-9"	—
15	1/2"	21'-9"	—
16	1/2"	21'-9"	—
17	1/2"	21'-9"	—
18	1/2"	21'-9"	—
19	1/2"	21'-9"	—
20	1/2"	21'-9"	—
21	1/2"	21'-9"	—
22	1/2"	21'-9"	—
23	1/2"	21'-9"	—
24	1/2"	21'-9"	—
25	1/2"	21'-9"	—
26	1/2"	21'-9"	—
27	1/2"	21'-9"	—
28	1/2"	21'-9"	—
29	1/2"	21'-9"	—
30	1/2"	21'-9"	—
31	1/2"	21'-9"	—
32	1/2"	21'-9"	—
33	1/2"	21'-9"	—
34	1/2"	21'-9"	—
35	1/2"	21'-9"	—
36	1/2"	21'-9"	—
37	1/2"	21'-9"	—
38	1/2"	21'-9"	—
39	1/2"	21'-9"	—
40	1/2"	21'-9"	—
41	1/2"	21'-9"	—
42	1/2"	21'-9"	—
43	1/2"	21'-9"	—
44	1/2"	21'-9"	—
45	1/2"	21'-9"	—
46	1/2"	21'-9"	—
47	1/2"	21'-9"	—
48	1/2"	21'-9"	—
49	1/2"	21'-9"	—
50	1/2"	21'-9"	—
51	1/2"	21'-9"	—
52	1/2"	21'-9"	—
53	1/2"	21'-9"	—
54	1/2"	21'-9"	—
55	1/2"	21'-9"	—
56	1/2"	21'-9"	—
57	1/2"	21'-9"	—
58	1/2"	21'-9"	—
59	1/2"	21'-9"	—
60	1/2"	21'-9"	—
61	1/2"	21'-9"	—
62	1/2"	21'-9"	—
63	1/2"	21'-9"	—
64	1/2"	21'-9"	—
65	1/2"	21'-9"	—
66	1/2"	21'-9"	—
67	1/2"	21'-9"	—
68	1/2"	21'-9"	—
69	1/2"	21'-9"	—
70	1/2"	21'-9"	—
71	1/2"	21'-9"	—
72	1/2"	21'-9"	—
73	1/2"	21'-9"	—
74	1/2"	21'-9"	—
75	1/2"	21'-9"	—
76	1/2"	21'-9"	—
77	1/2"	21'-9"	—
78	1/2"	21'-9"	—
79	1/2"	21'-9"	—
80	1/2"	21'-9"	—
81	1/2"	21'-9"	—
82	1/2"	21'-9"	—
83	1/2"	21'-9"	—
84	1/2"	21'-9"	—
85	1/2"	21'-9"	—
86	1/2"	21'-9"	—
87	1/2"	21'-9"	—
88	1/2"	21'-9"	—
89	1/2"	21'-9"	—
90	1/2"	21'-9"	—
91	1/2"	21'-9"	—
92	1/2"	21'-9"	—
93	1/2"	21'-9"	—
94	1/2"	21'-9"	—
95	1/2"	21'-9"	—
96	1/2"	21'-9"	—
97	1/2"	21'-9"	—
98	1/2"	21'-9"	—
99	1/2"	21'-9"	—
100	1/2"	21'-9"	—

DESIGNED: H.M.C.  
CHECKED: H.M.C.  
DRAWN: H.M.C.  
DATE: 12-15-57



SUPERSTRUCTURE DECK  
KANKAKEE RIVER BRIDGE  
PROJECT 01-29(6)  
R.A. RT 26 SEC. 140-D-P-4-P  
KANKAKEE COUNTY  
STA. 260 + 90

FOR INFORMATION ONLY