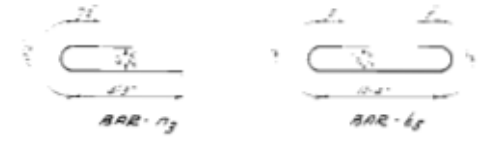
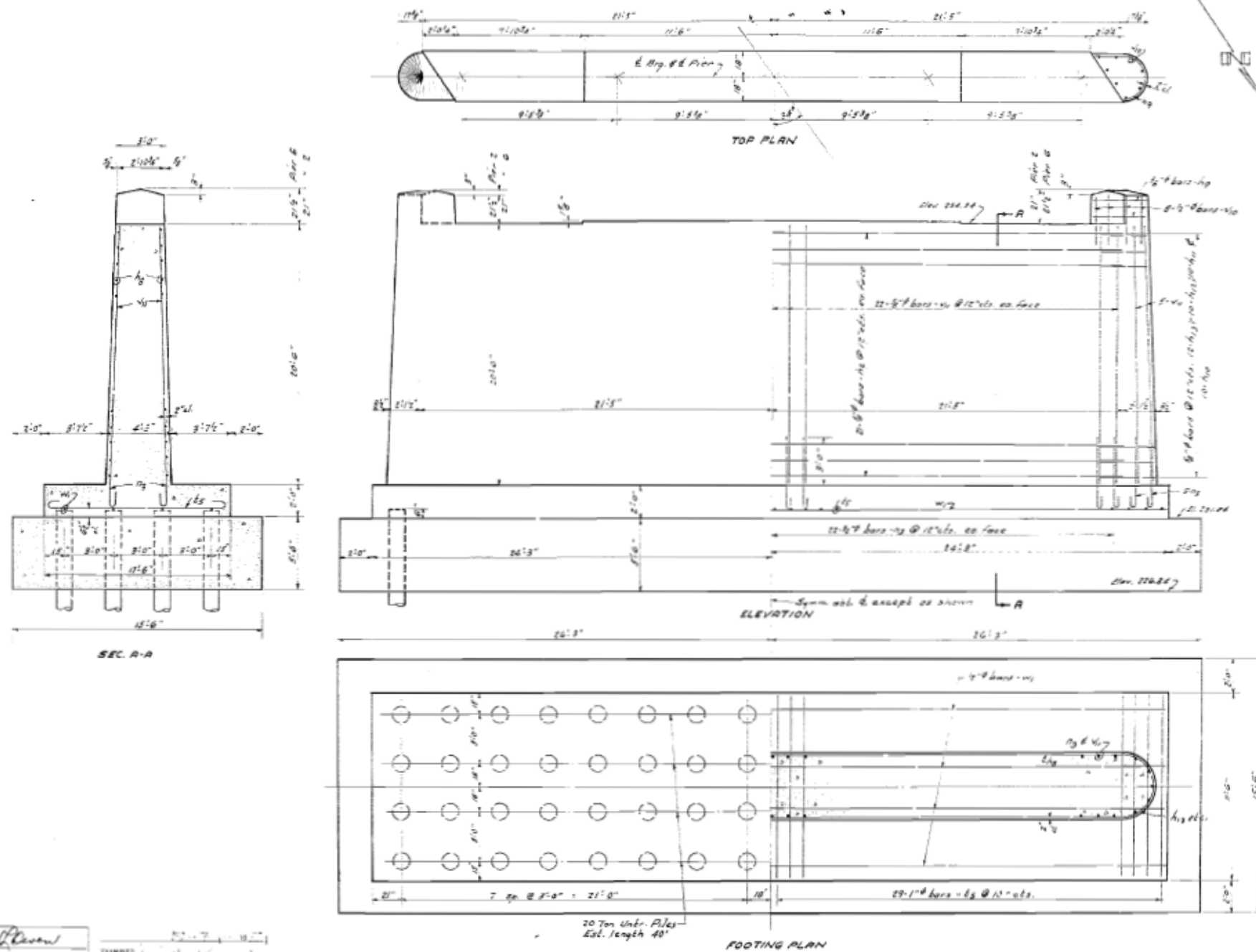


STATE OF ILLINOIS
DEPARTMENT OF PUBLIC WORKS & BUILDINGS
DIVISION OF HIGHWAYS

DATE	BY	SCALE	SHEET NO.
10-15-57	AD-B	AS SHOWN	159



ONE BRIDGE
BILL OF MATERIALS PIER 266

Bar	No.	Size	Length	Feet
10	160	5/8"	11'-0"	—
11	8	"	11'-0"	—
12	20	"	11'-0"	—
13	20	"	11'-0"	—
14	20	"	11'-0"	—
15	20	"	11'-0"	—
16	20	"	11'-0"	—
17	20	"	11'-0"	—
18	20	"	11'-0"	—
19	20	"	11'-0"	—
20	20	"	11'-0"	—
21	20	"	11'-0"	—
22	20	"	11'-0"	—
23	20	"	11'-0"	—
24	20	"	11'-0"	—
25	20	"	11'-0"	—
26	20	"	11'-0"	—
27	20	"	11'-0"	—
28	20	"	11'-0"	—
29	20	"	11'-0"	—
30	20	"	11'-0"	—
31	20	"	11'-0"	—
32	20	"	11'-0"	—

Class A Concrete C-1000-1000
Reinforcement Bars 60,000
Steel Cast Concrete C-1000-1000
Cofferdams Each 2
Cofferdam Eases C-1000-1000
Under Piles (etc.) C-1000-1000
Test Pipes Each 2

PIERS 266
KANKAKEE RIVER BRIDGE
PROJECT 07-29(C)
P.A. ETC. B. SECTION 140-B
KANKAKEE CO.
STA. 260+90

DESIGNED: J.D. Casan
CHECKED: Harry P. Kaban
DRAWN: J.C. Suter
APPROVED: J.H. [Signature]

FOR INFORMATION ONLY

FILE NAME -	USER NAME - \$USER\$	DESIGNED -	REVISED -	STATE OF ILLINOIS DEPARTMENT OF TRANSPORTATION	ORIGINAL BRIDGE PLANS 1955	F.A.I. RTE. 57	SECTION (140)BR, BR-1 & (II)	COUNTY KANKAKEE	TOTAL SHEETS 183	SHEET NO. 159	
\$FILEL\$	PLOT SCALE = \$SCALE\$	DRAWN -	REVISED -			SCALE: _____	SHEET _____ OF _____ SHEETS	STA. _____ TO STA. _____	CONTRACT NO. 66750		ILLINOIS FED. AID PROJECT
\$MODELNAME\$	PLOT DATE = \$DATE\$	CHECKED -	REVISED -								
		DATE -	REVISED -								