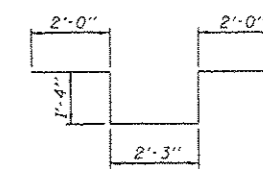
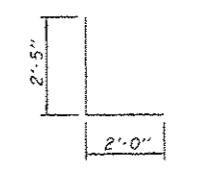
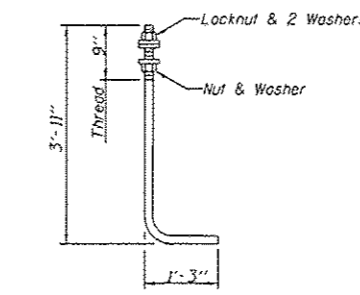
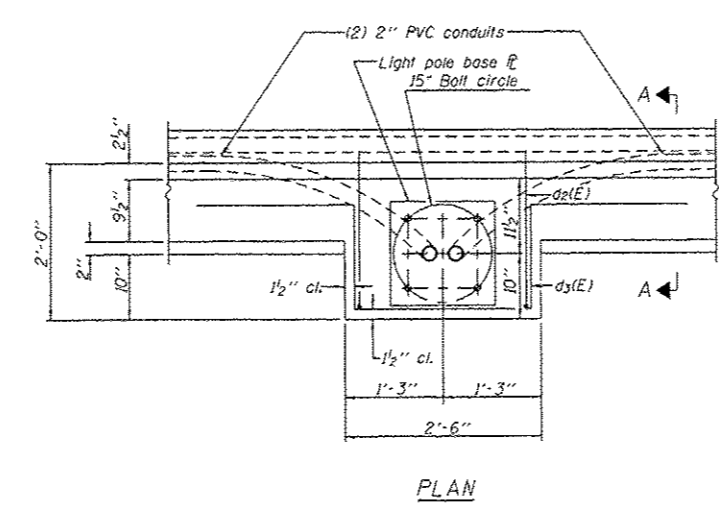
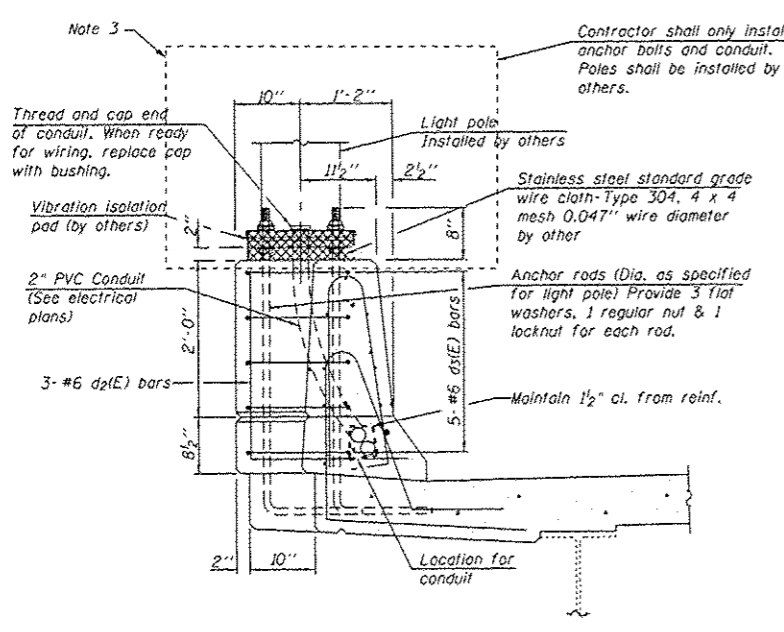


- LEGEND:**
- LIGHT POLE FOUNDATION, POLE INSTALLED BY OTHERS UNDER SEPARATE CONTRACT
  - PROPOSED JUNCTION BOX, SIZE AND TYPE AS NOTED
  - PROPOSED CONDUIT, SIZE AND TYPE AS NOTED

- NOTES:**
1. CONTRACTOR MUST PROVIDE AN EXPANSION/DEFLECTION FITTING AT EACH LOCATION WHERE THE CONDUIT RUN TRAVERSES AN EXPANSION JOINT.
  2. CONTRACTOR SHALL PROVIDE THREADED CAP AT EACH CONDUIT END AND PULL ROPE IN EACH EMPTY CONDUIT.
  3. EACH POLE FOUNDATION SHALL BE COMPLETELY COVERED FOR PROTECTION BY A POLYMER CONCRETE PEDESTAL AS APPROVED BY THE ENGINEER. PEDESTAL SHALL HAVE A MINIMUM PROJECTION ABOVE THE PARAPET. THE COST OF THIS WORK SHALL BE INCLUDED WITH CONDUIT EMBEDDED IN STRUCTURE.
  4. SEE BRIDGE PLANS FOR MORE DETAIL.



Note: Cost of anchor rods is included with Concrete Superstructure.

SECTION A-A

FILE NAME :	USER NAME :	DESIGNED :	REVISED :	<b>STATE OF ILLINOIS DEPARTMENT OF TRANSPORTATION</b>	<b>LIGHT POLE FOUNDATIONS AND CONDUIT IN BRIDGE PARAPET LIGHTING PLAN</b>				F.A. RTE.	SECTION	COUNTY	TOTAL SHEETS	SHEET NO.
E:\Project\I-57 Walkway\CADD file\0366750-57s-light-05.dgn	r.patal	DRAWN :	REVISED :		57	(140)BR, BR-1 & 1(1)	KANKAKEE	183	133				
Default	PLOT SCALE : 58.0217391	CHECKED :	REVISED :		SCALE: SHEET OF SHEETS STA. TO STA.				CONTRACT NO. 66750				
	PLOT DATE : 03-OCT-2013 11:19	DATE :	REVISED :		ILLINOIS FED. AID PROJECT								