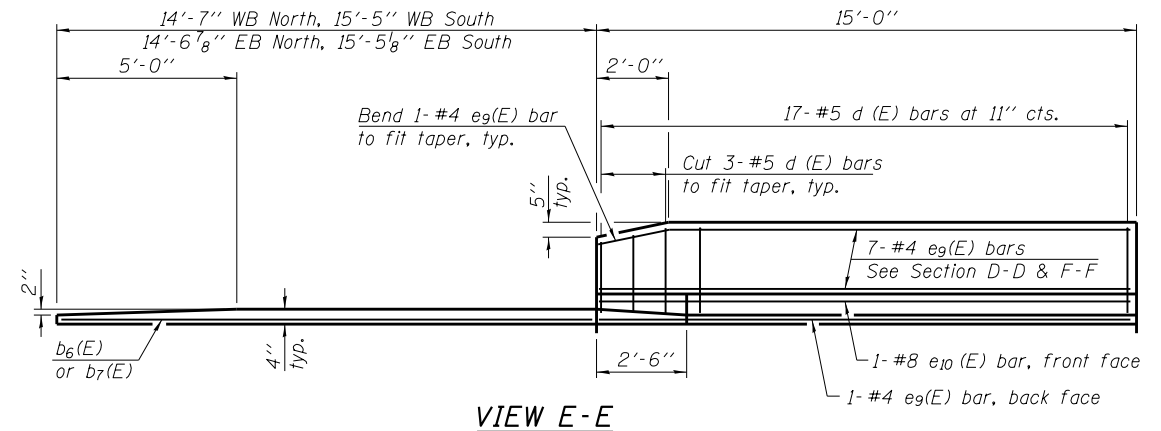
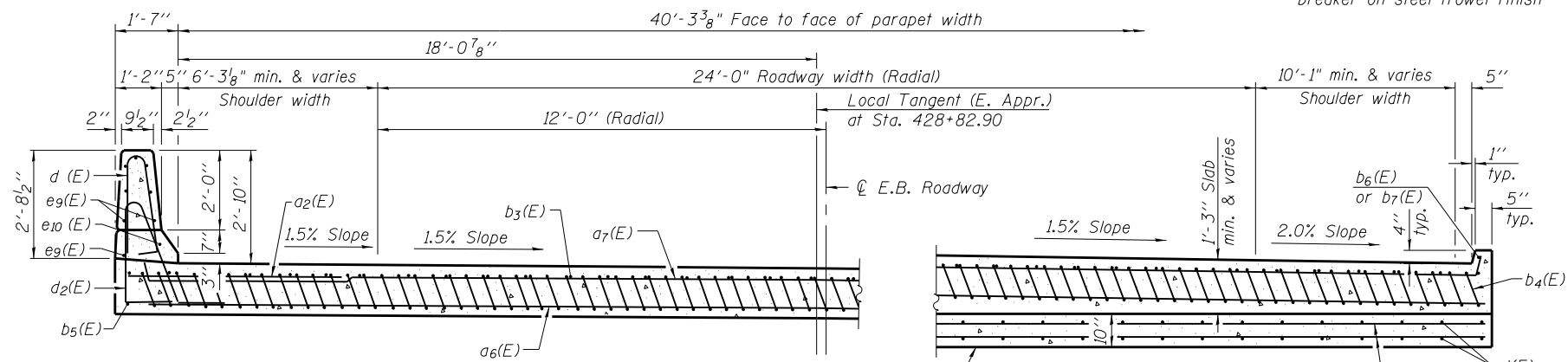


Notes:
 See sheet 18 of 43 for Detail A and View B-B.
 Approach slab and parapet concrete shall be paid for as Concrete Superstructure.
 Approach footing concrete shall be paid for as Concrete Structures.
 Reinforcement shall be paid for as Reinforcement Bars, Epoxy Coated.
 For v(E) bar details, see sheets 11-14 of 43.
 The approach footing maximum applied service bearing pressure (Q_{max}) = 2.0 ksf.
 Cost of excavation for approach footing included with Concrete Structures.
 For Granular Backfill for Structures and drainage treatment details, see sheet 2 of 43.
 For additional parapet details, see sheet 13 of 43.



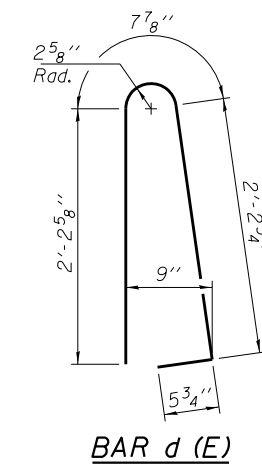
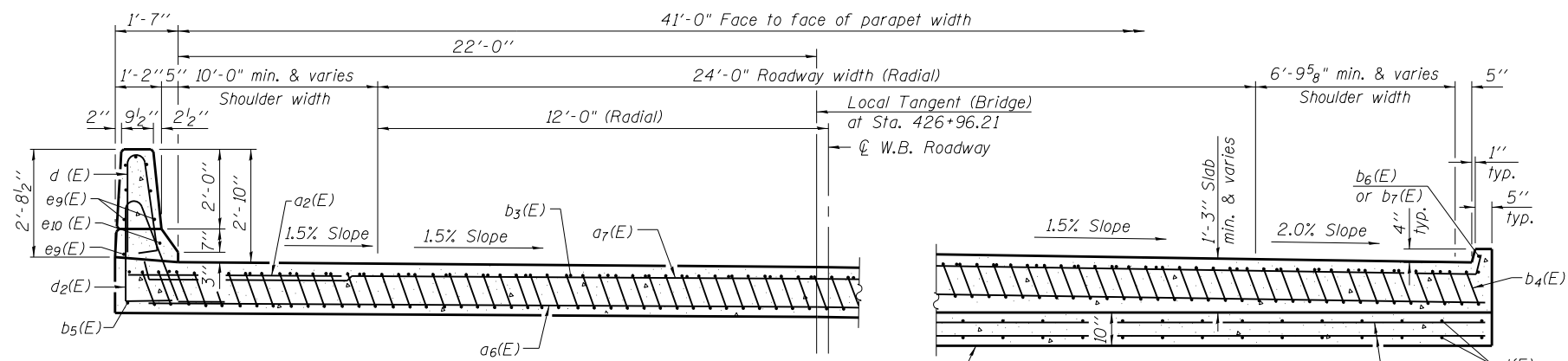
NEAR ABUTMENT

SECTION F-F

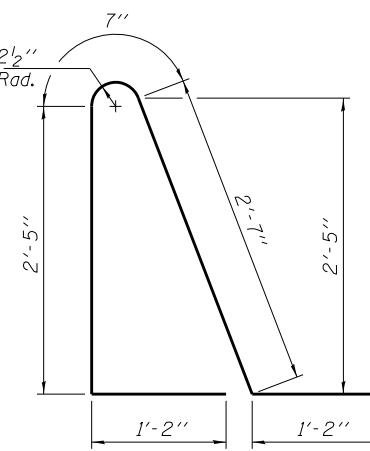
(See Plan for dimensions not shown)
(E Appr. EB)

AT APPROACH FOOTING

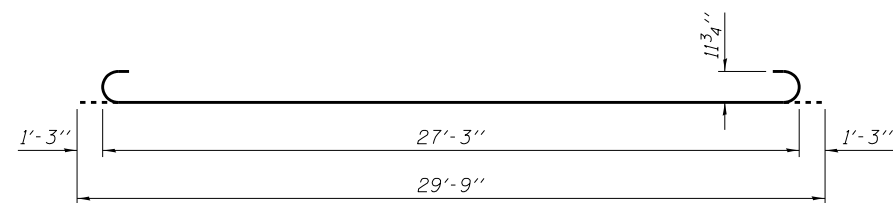
Elev. 642.90
(Level out to out)



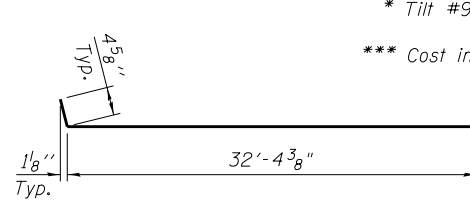
BAR d(E)



BAR d2(E)



BAR b4(E)



BAR a7(E)

* Tilt #9 b4(E) bars as required to maintain clearance.

*** Cost included with Concrete Superstructure.

MINIMUM BAR LAP

#4 bar = 2'-11"
 #5 bar = 2'-7"

BILL OF MATERIAL

(Two East Approaches)

Bar	No.	Size	Length	Shape
a2(E)	48	#6	6'-6"	—
a6(E)	184	#5	31'-3"	—
a7(E)	100	#4	32'-9"	—
b3(E)	69	#4	29'-8"	—
b4(E)	201	#9	29'-9"	—
b5(E)	4	#4	14'-8"	—
b6(E)	2	#4	14'-0"	—
b7(E)	2	#4	15'-3"	—
d(E)	68	#5	5'-7"	—
d2(E)	68	#5	7'-11"	—
e9(E)	32	#4	14'-8"	—
e10(E)	4	#8	14'-8"	—
t(E)	172	#4	13'-10"	—
w(E)	160	#5	31'-4"	—
Concrete Superstructure		Cu. Yd.	130.6	
Concrete Structures		Cu. Yd.	37.4	
** Reinforcement Bars, Epoxy Coated		Pound	38,680	

** Weight includes: 31,860 (Superstructure)
 6,820 (Substructure)

(Sheet 3 of 3)

FILE NAME = 0060184_0185_66998-20-E.Appr.Slab.dgn
 MODEL = Default
 PLOT DRIVER = V8_PDF_11x17.plt



USER NAME = tfray	DESIGNED - SCD	REVISED
FILE NAME =	CHECKED - DRB	REVISED
PLOT SCALE = 480:0.0000 ' / ft.	DRAWN - TKW	REVISED
PLOT DATE = 7/29/2013	CHECKED - SCD	REVISED

STATE OF ILLINOIS
 DEPARTMENT OF TRANSPORTATION

EAST BRIDGE APPROACH SLAB DETAILS
 STRUCTURE NO. 006-0184 (E.B.) & 006-0185 (W.B.)

SHEET NO. 20 OF 43 SHEETS

F.A.I. RTE. = 80	SECTION = (06-2)BR-3,4	COUNTY = BUREAU	TOTAL SHEETS = 133	SHEET NO. = 64
			CONTRACT NO. 66998	
ILLINOIS FED. AID PROJECT				