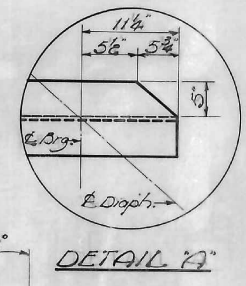
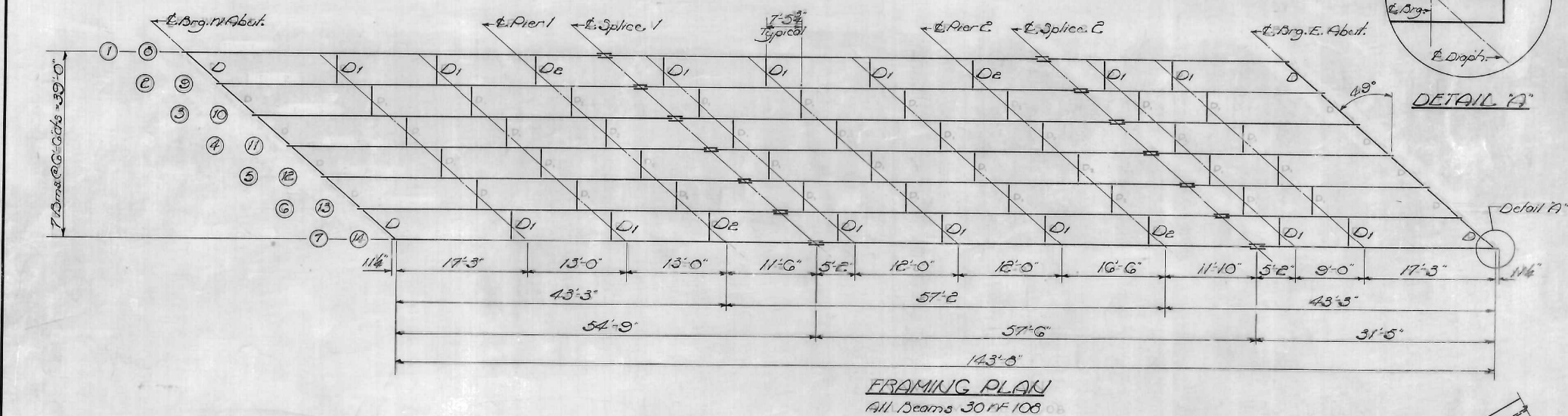


STATE OF ILLINOIS  
DEPARTMENT OF PUBLIC WORKS & BUILDINGS  
DIVISION OF HIGHWAYS

ROUTE NO.	SECTION	COUNTY	TOTAL SHEETS	SHEET NO.	SHEET NO. 5
F.A.I. 80	06-18-1	Bureau	147	53	13 SHEETS
FED. ROAD DIST. NO. 7	ILLINOIS	FED. AID PROJECT			



ELEVATION TOP OF BEAMS - NORTH BRIDGE

Location	1m.1	1m.2	1m.3	1m.4	1m.5	1m.6	1m.7
E. Brg. W. Abut.	643.13	643.07	643.01	642.95	642.89	642.84	642.78
E. Pier 1	643.13	643.07	643.01	642.95	642.89	642.84	642.78
E. Splice 1	643.13	643.07	643.01	642.95	642.89	642.84	642.78
E. Pier 2	643.17	643.11	643.05	642.99	642.93	642.88	642.82
E. Splice 2	643.18	643.12	643.06	643.00	642.94	642.89	642.83
E. Brg. E. Abut.	643.23	643.17	643.11	643.05	642.99	642.94	642.88

4" DIMENSIONS - NORTH & SOUTH BRIDGES

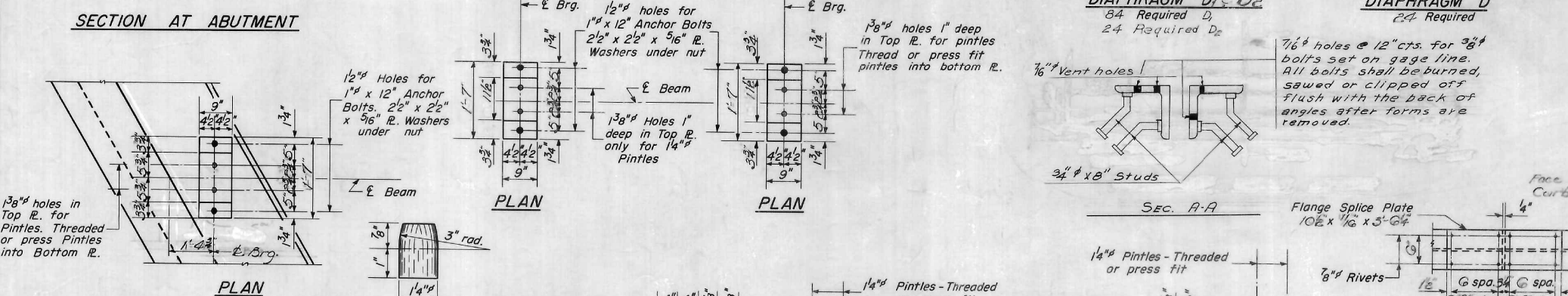
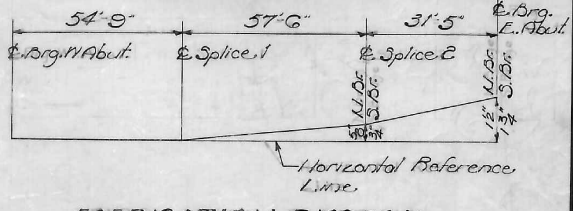
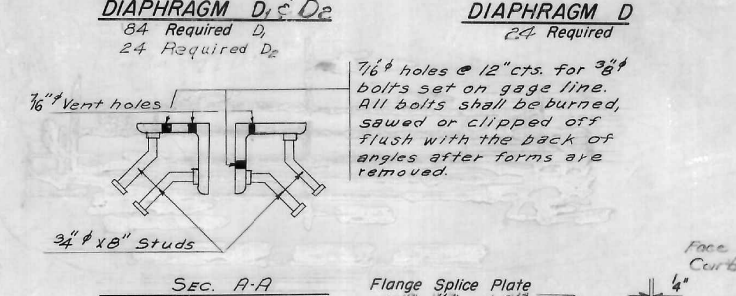
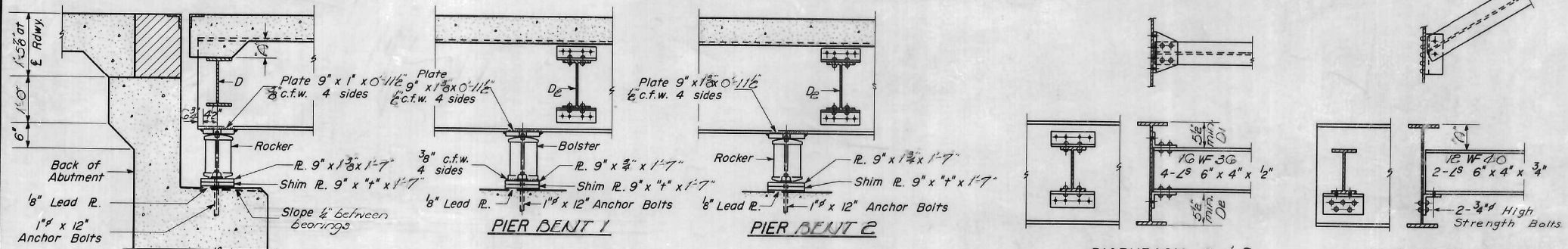
Location - 1m.	1m.8	1m.9	1m.10	1m.11	1m.12	1m.13	1m.14
E. Brg. W. Abut.	0	0	8	0	0	8	0
E. Pier 1	0	0	8	0	0	8	0
E. Pier 2	0	0	8	0	0	8	0
E. Brg. E. Abut.	0	0	8	0	0	8	0

ELEVATION TOP OF BEAMS - SOUTH BRIDGE

Location	1m.8	1m.9	1m.10	1m.11	1m.12	1m.13	1m.14
E. Brg. W. Abut.	643.18	643.12	643.06	643.00	642.94	642.89	642.83
E. Pier 1	643.18	643.12	643.06	643.00	642.94	642.89	642.83
E. Splice 1	643.18	643.12	643.06	643.00	642.94	642.89	642.83
E. Pier 2	643.23	643.17	643.11	643.05	642.99	642.94	642.88
E. Splice 2	643.24	643.18	643.12	643.06	643.00	642.95	642.89
E. Brg. E. Abut.	643.33	643.27	643.21	643.15	643.10	643.04	642.98

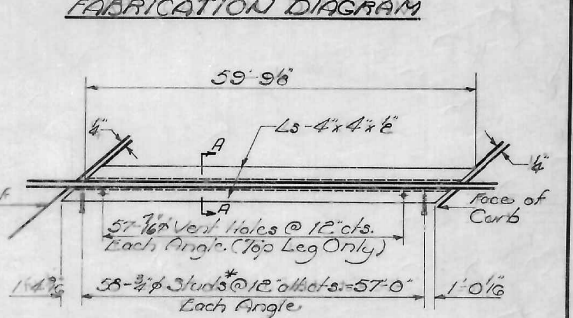
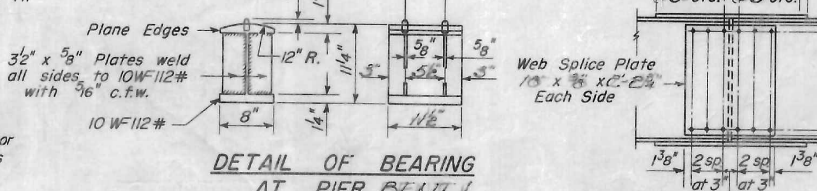
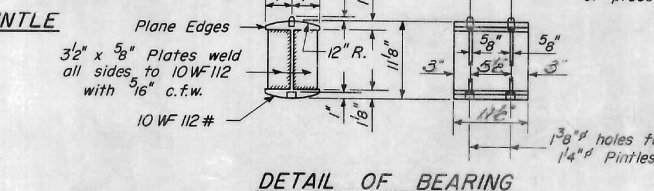
4" DIMENSIONS - NO. & SO. BRIDGES

Location - 1m.	1m.8	1m.9	1m.10	1m.11	1m.12	1m.13	1m.14
W. Abut.	7 1/2	6 6	5 3/4	5 6	4 3/4	3 3/4	3
E. Abut.	7 1/2	6 6	5 3/4	5 6	4 3/4	3 3/4	3



DESIGNED R.K. Taylor  
CHECKED C.W. Blik  
DRAWN W.A. Sausaman  
CHECKED C.W.B.

EXAMINED H.G. Bauman  
PASSED  
APPROVED



STRUCTURAL STEEL  
F.A.I. RT. 80 - SEC. 06-2 B - 1  
BUREAU COUNTY  
3TA 420+69.5

I-2-R Re-drawn 9-23-59  
Rev. 2-8-62 W.L.P. Added Sec. AA & Rev. 1-24-63 W.L.P. Removed F. Sec.  
Note \* to Exp. Guard Plan