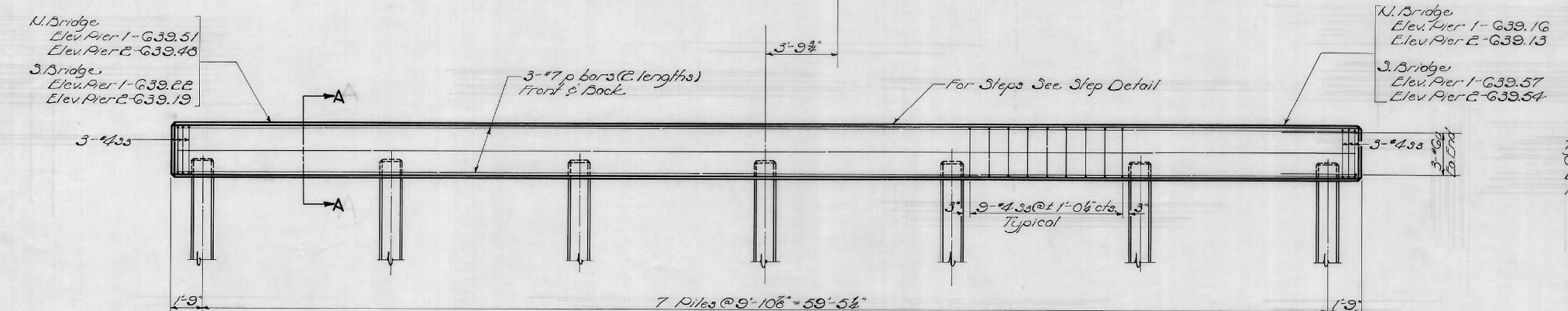
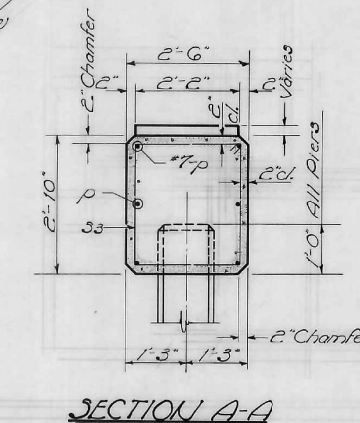
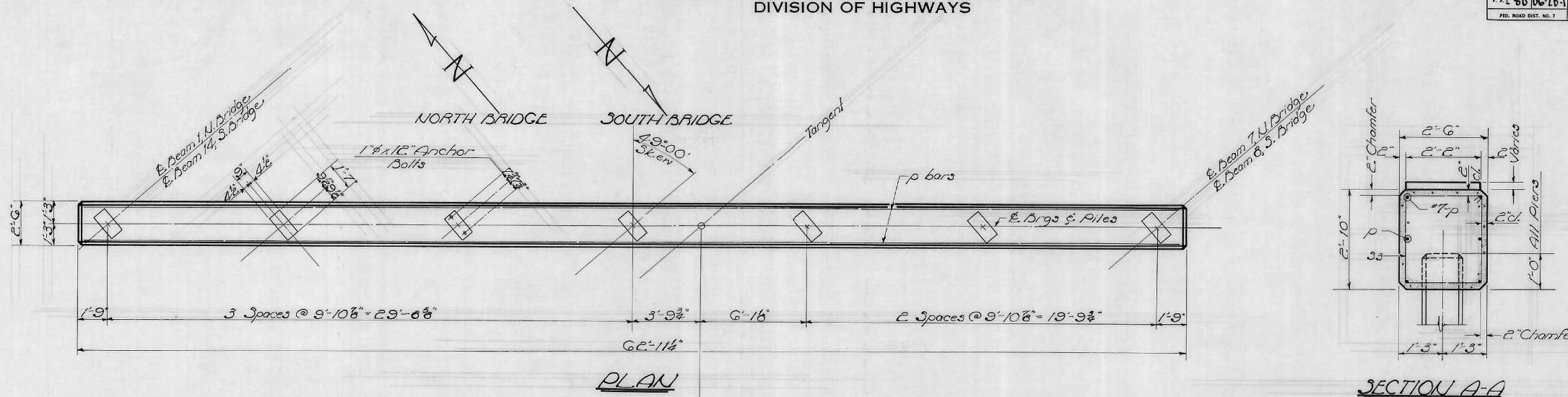


STATE OF ILLINOIS  
DEPARTMENT OF PUBLIC WORKS & BUILDINGS  
DIVISION OF HIGHWAYS

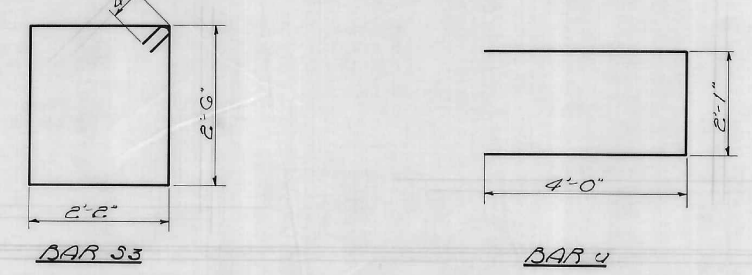
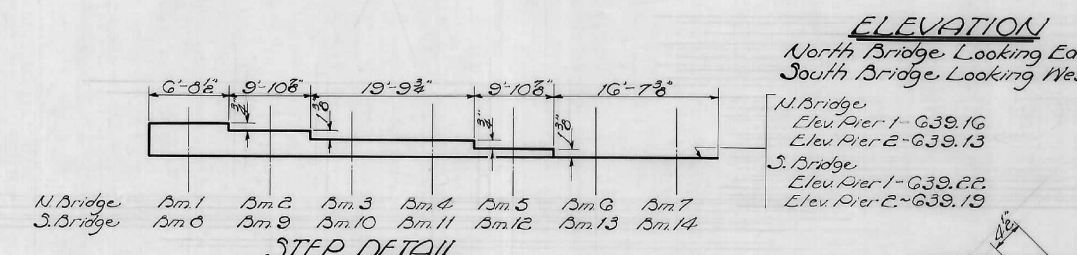
ROUTE NO.	SECTION	COUNTY	TOTAL SHEETS	SHEET NO.	SHEET NO. 10
F.A.I. 80-06-2B-1	Bureau	1AS	58	13	SHEETS
FED. ROAD DIST. NO. 7	ILLINOIS	FED. AID PROJECT			



**PILE DATA**  
Type: Precast Concrete (14")  
Capacity: 32 Tons  
Est. Length: 45'-0"  
No. Reg'd. Piles (Including 1 Test Pile)

**4 PIER BENTS  
BILL OF MATERIAL**

Bar	No.	Size	Length	Shape
p	48	#7	32'-2"	
s3	240	#4	10'-1"	□
u	36	#6	10'-1"	□
Class A Concrete		Cu. Yd.	67.2	
Reinforcement Bars		Lb.	5860	
Prec. Conc. Piles (14")		Lin. Ft.	1215	
Test Piles (Prec. Conc.)		Co.	1	



DESIGNED: R.X. Taylor  
CHECKED: C.W. Bick  
DRAWN: R.X.T. W.L. Jacobs  
CHECKED: C.W. B.

EXAMINED: W.E. Bernbaum  
PASSED: \_\_\_\_\_  
APPROVED: \_\_\_\_\_  
CHIEF HIGHWAY ENGINEER

DATE: AUG 13 1962

PIER BENTS  
F.A.I. RT. 80-SEC. 06-2B-1  
BUREAU COUNTY  
STA. 426+69.5