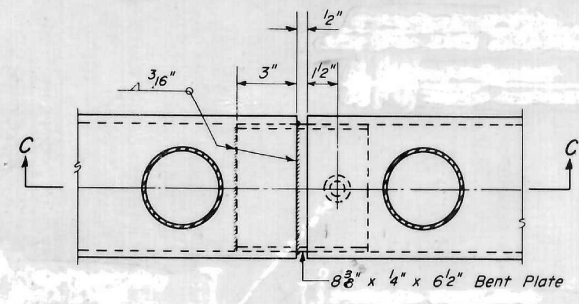
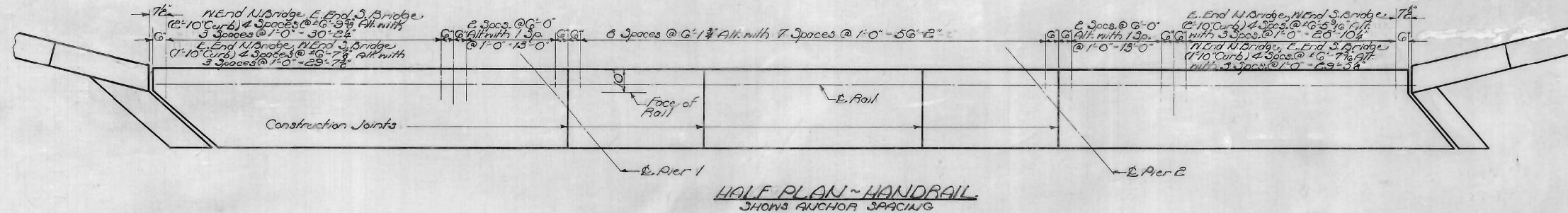
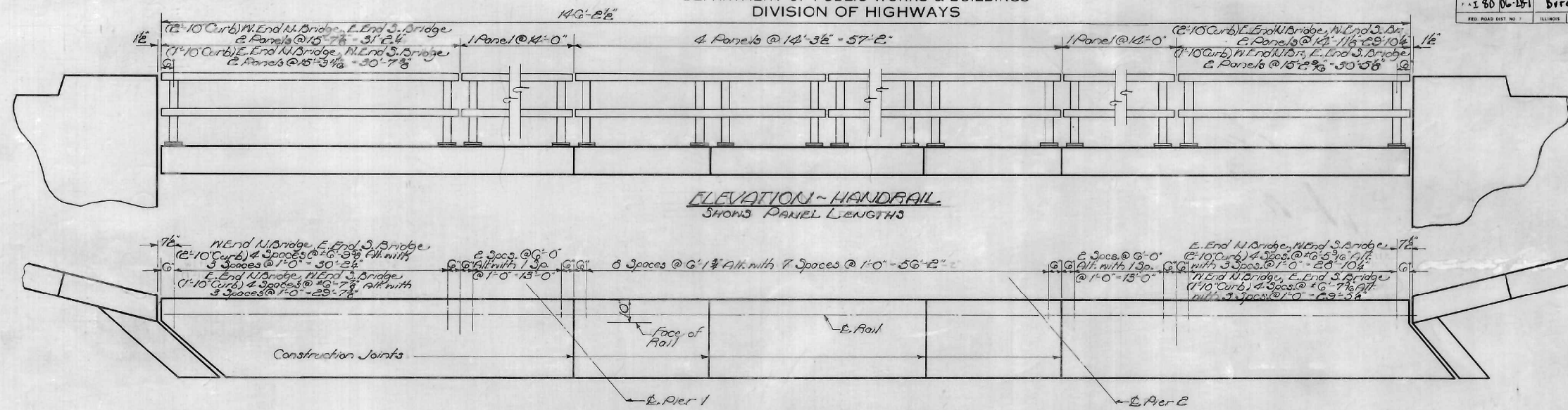
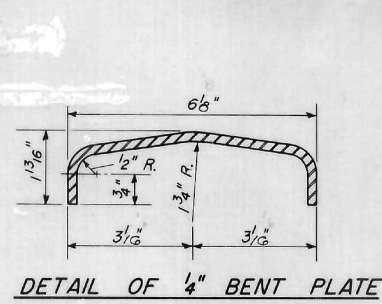


STATE OF ILLINOIS
DEPARTMENT OF PUBLIC WORKS & BUILDINGS
DIVISION OF HIGHWAYS

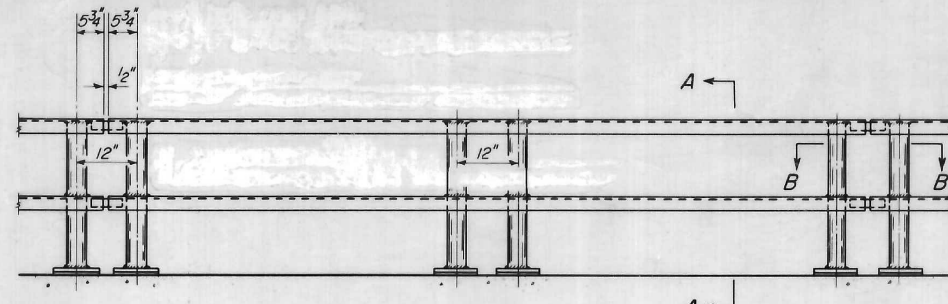
ROUTE NO.	SECTION	COUNTY	TOTAL SHEETS	SHEET NO.	SHEET NO. //
80	06-2B-1	Bureau	145	59	13 SHEETS
FED. ROAD DIST. NO.	ILLINOIS	FED. AID PROJECT			



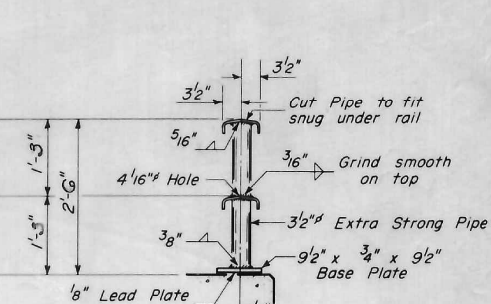
SECTION B-B



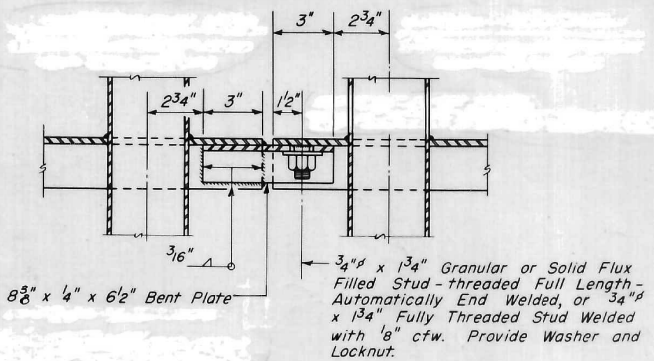
DETAIL OF 1/4\"/>



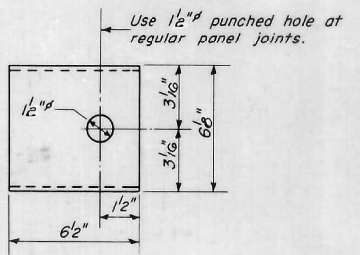
ELEVATION TYPICAL PANEL



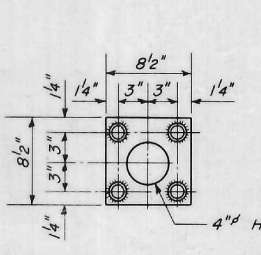
SECTION A-A



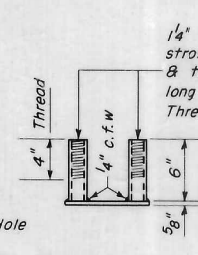
SECTION C-C



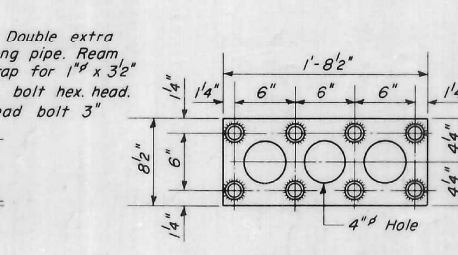
PLAN



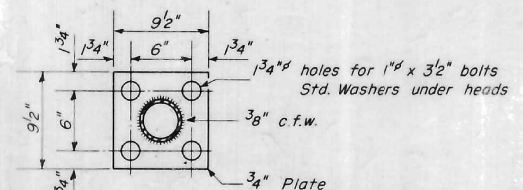
ANCHOR DEVICE
For Single Post at End of Panel



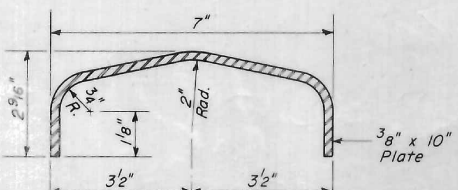
END VIEW



ANCHOR DEVICE
For Double Posts within Each Panel



BASE PLATE
ALL POSTS



DETAIL OF RAIL

GENERAL NOTES
After erection all Bolts and Washers shall be spot painted with one coat of red lead and two coats of aluminum paint.
Provide 1-8\"/>

BILL OF MATERIAL

Item	Unit	Quantity
Metal Handrail	Lin. Ft.	535

HANDRAIL
F.A.I. RT. 80 ~ SEC. 062B-1
BUREAU COUNTY
STA. 4+62.95

DESIGNED <i>R.K. Taylor</i>	EXAMINED <i>W.E. Burman</i>
CHECKED <i>C.W. Black</i>	PASSED
DRAWN <i>W.A. Sausaman</i>	APPROVED
CHECKED <i>C.W. G.</i>	CHIEF HIGHWAY ENGINEER

R-12 (A) Drawn 4-18-60