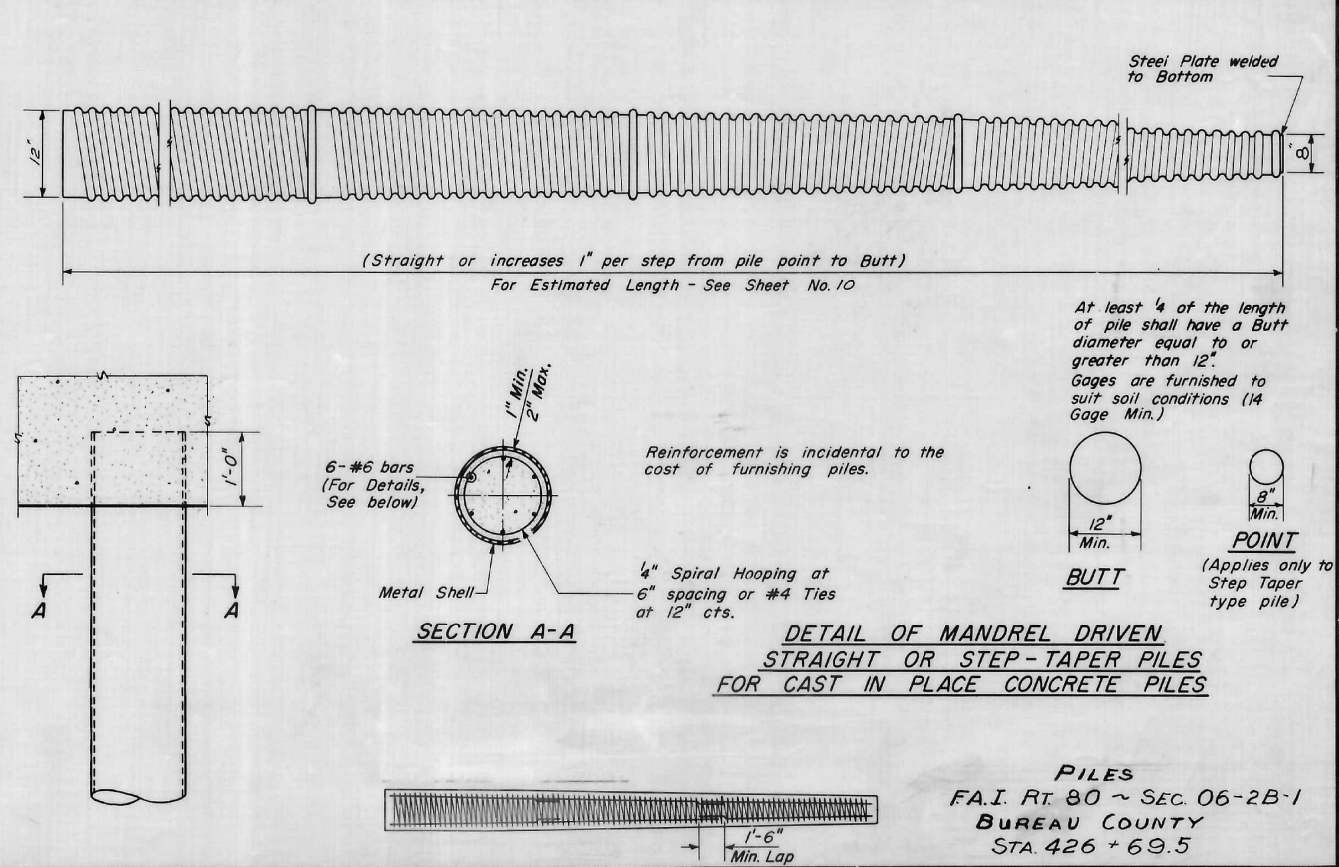
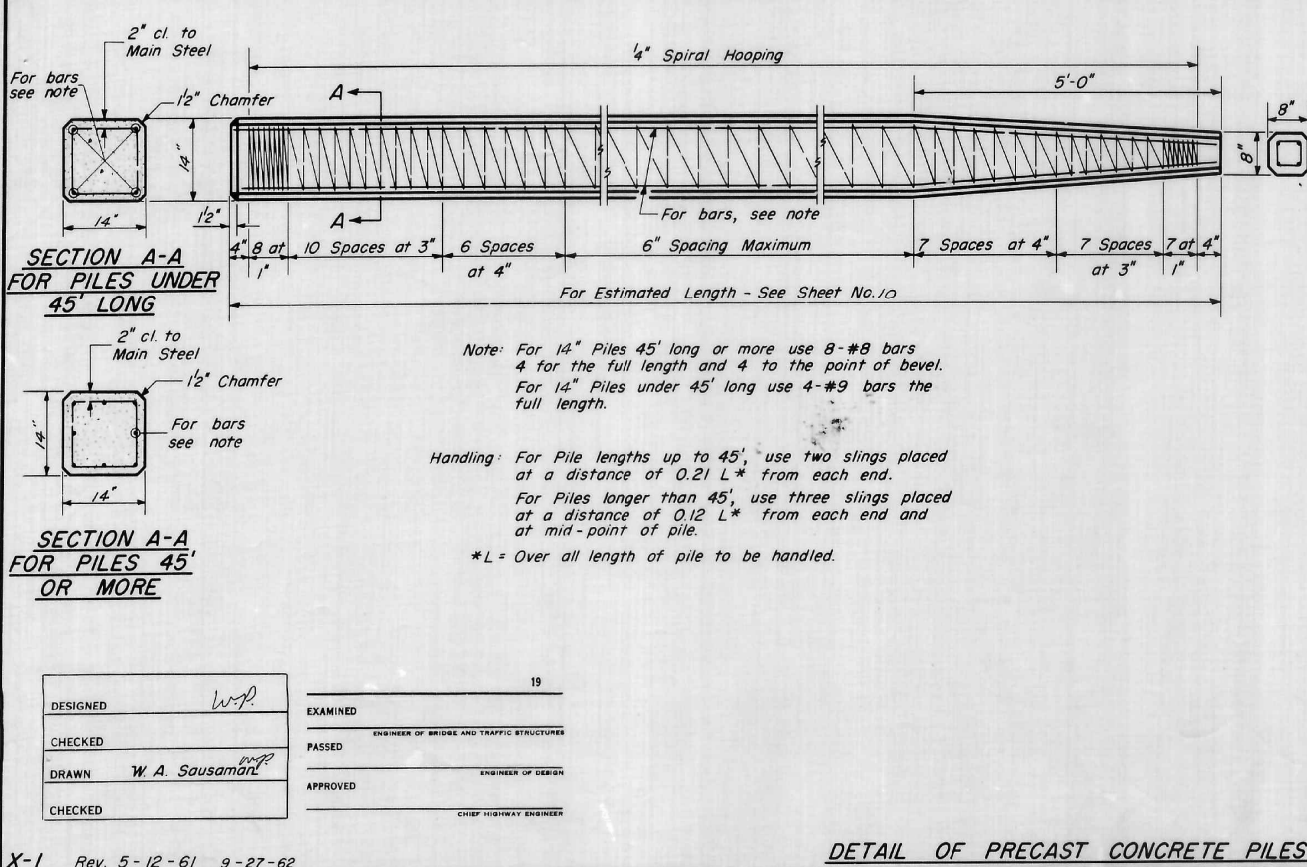
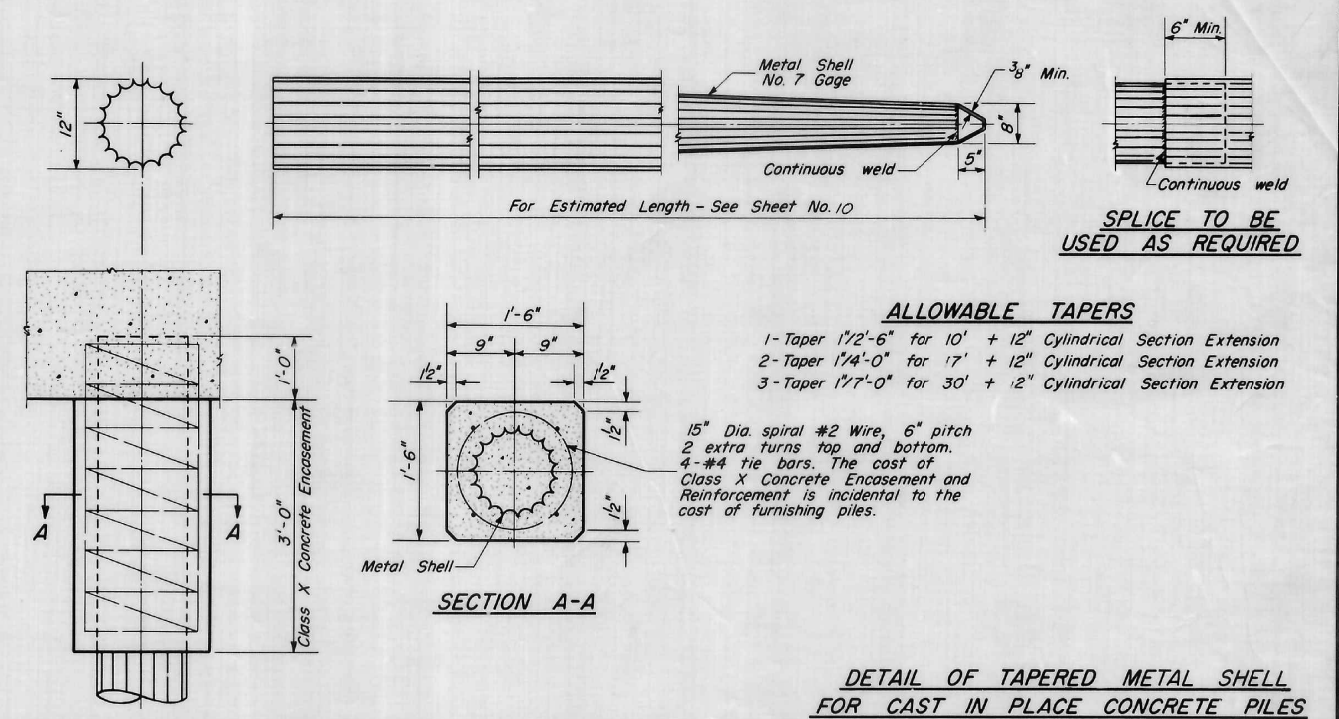
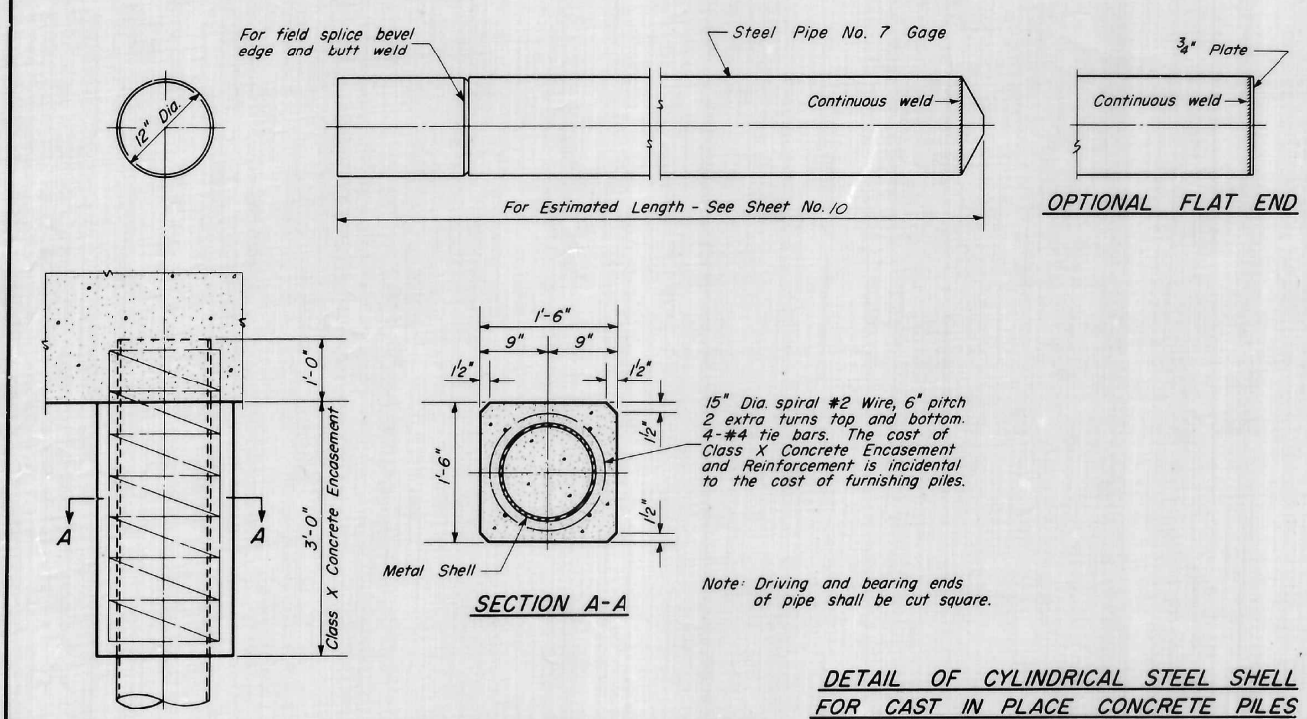


STATE OF ILLINOIS  
DEPARTMENT OF PUBLIC WORKS & BUILDINGS  
DIVISION OF HIGHWAYS

ROUTE NO.	SECTION	COUNTY	TOTAL SHEETS	SHEET NO.	SHEET NO. / 2
S. A. I.	06-2B-1	Bureau	145	60	13 SHEETS
F. A. I. 80					
FED. ROAD DIST. NO. 7	ILLINOIS	FED. AID PROJECT.			



DESIGNED	W.P.	EXAMINED	
CHECKED		PASSED	ENGINEER OF BRIDGE AND TRAFFIC STRUCTURES
DRAWN	W. A. Sausaman	APPROVED	ENGINEER OF DESIGN
CHECKED			CHIEF HIGHWAY ENGINEER

X-1 Rev. 5-12-61 9-27-62

**PILES**  
F.A.I. RT. 80 ~ SEC. 06-2B-1  
BUREAU COUNTY  
STA. 426 + 69.5