

STATE OF ILLINOIS
DEPARTMENT OF TRANSPORTATION
DIVISION OF HIGHWAYS

**PROPOSED
HIGHWAY PLANS**

FAI ROUTE 80 (I-80)
SECTION (06-2) BR-3,4
PROJECT : ACNHPP-0080(401)
DUAL STRUCTURE REPLACEMENT
CROSSOVERS AND RESURFACING
BUREAU COUNTY

C-93-136-11

F.A.I. RTE.	SECTION	COUNTY	TOTAL SHEETS	SHEET NO.
80	(06-2) BR-3,4	BUREAU	133	1
		ILLINOIS	CONTRACT NO. 66998	

INDEX OF SHEETS

- 1 COVER SHEET
- 2 HIGHWAY STANDARDS, GENERAL NOTES, & COMMITMENTS
- 3-10 SUMMARY OF QUANTITIES
- 11-16 TYPICAL SECTIONS
- 17-22 SCHEDULE OF QUANTITIES
- 23-24 ALIGNMENTS, COORDINATES, TIES, & BENCHMARKS SHEETS
- 25-27 PLAN AND PROFILE SHEETS
- 28-38 SUGGESTED STAGES OF CONSTRUCTION
- 39 ALTERNATE ROUTE
- 40-42 EROSION AND SEDIMENT CONTROL & PERMANENT PAVEMENT MARKING SHEETS
- 43-44 TEMPORARY LIGHTING PLAN SHEETS
- 45-87 STRUCTURE PLANS
- 88-92 BRIDGE CONNECTOR PLAN SHEETS
- 93-101 DETAILS
- 102-103 LAND BRIDGE BORINGS
- 104-117 EXISTING STRUCTURE PLANS S.N. 006-0011/12
- 118-133 CROSS SECTIONS 1-80

FOR LIST OF HIGHWAY STANDARDS, SEE SHEET NO. 2

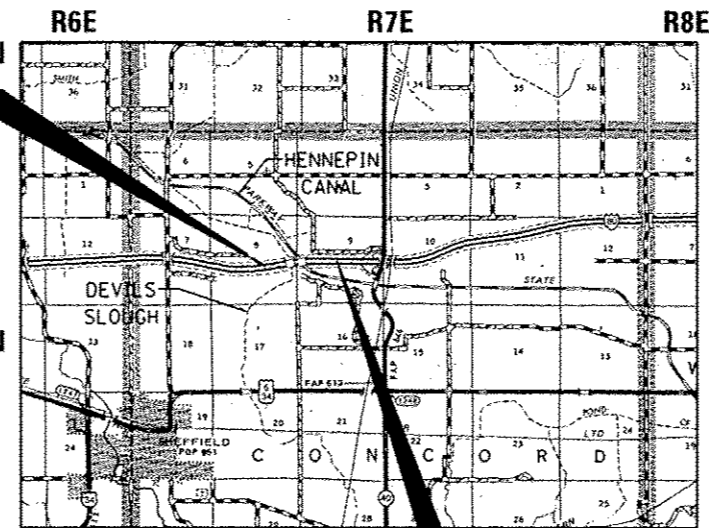


EXISTING STRUCTURES OVER DEVIL'S SLOUGH
S.N. 006-0009 EB STA. 422+57.15 TO STA. 423+63.45
S.N. 006-0010 WB STA. 422+66.67 TO STA. 423+72.88

EXISTING STRUCTURES OVER HENNEPIN CANAL ARE THREE SPAN STEEL BEAMS WITH A CONCRETE DECK AND BITUMINOUS OVERLAY SUPPORTED BY OPEN ABUTMENTS FOUNDED ON METAL SHELL PILES AND CONCRETE PIERS FOUNDED ON PRECAST CONCRETE PILES.
S.N. 006-0011 EB STA. 426+40.91 TO STA. 427+88.33 (BACK TO BACK ABUTMENTS)
S.N. 006-0012 WB STA. 425+52.83 TO STA. 426+98.38 (BACK TO BACK ABUTMENTS)

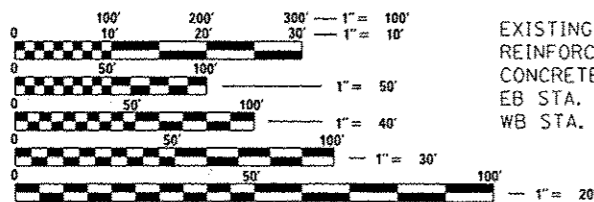
EXISTING LAND BRIDGE STRUCTURE IS A 12" THICK REINFORCED STRUCTURAL SLAB FOUNDED ON REINFORCED CONCRETE PILE CAPS ON METAL SHELL PILES.
EB STA. 423+94.53 TO STA. 426+40.91
WB STA. 424+10.27 TO STA. 425+52.83

PROPOSED STRUCTURES OVER HENNEPIN CANAL ARE THREE SPAN STEEL BEAMS WITH A CONCRETE DECK SUPPORTED BY INTEGRAL ABUTMENTS FOUNDED ON METAL SHELL PILES AND CONCRETE PIERS FOUNDED ON PRECAST CONCRETE PILES
S.N. 006-0184 EB STA. 426+23.43 TO STA. 428+06.31
S.N. 006-0185 WB STA. 425+34.22 TO STA. 427+15.49



BEGIN IMPROVEMENT
STA. 404 + 59.85 (EB & WB)

END IMPROVEMENT
STA. 444 + 69.24 (EB)
STA. 444 + 87.68 (WB)



FULL SIZE PLANS HAVE BEEN PREPARED USING STANDARD ENGINEERING SCALES. REDUCED SIZED PLANS WILL NOT CONFORM TO STANDARD SCALES. IN MAKING MEASUREMENTS ON REDUCED PLANS, THE ABOVE SCALES MAY BE USED.

J.U.L.I.E.
JOINT UTILITY LOCATION INFORMATION FOR EXCAVATION
1-800-892-0123
OR 811

PROJECT ENGINEER: CRAIG REED, P.E.
PROJECT MANAGER: MARK JONES, P.E.

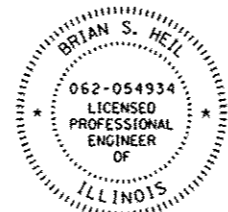
CONTRACT NO. 66998

N
LOCATION MAP
NOT TO SCALE

GROSS LENGTH
4009 FT. (EB) = 0.759 MILE
4028 FT. (WB) = 0.763 MILE
NET LENGTH
3590 FT. (EB) = 0.680 MILE
3604 FT. (WB) = 0.683 MILE

FUNCTIONAL CLASSIFICATION
RURAL INTERSTATE
2011 ADT = 17,100
P.V. = 49% S.U. = 6% M.U. = 45%

STATE OF ILLINOIS
DEPARTMENT OF TRANSPORTATION
DIVISION OF HIGHWAYS
SUBMITTED Aug. 13th 2013
Paul A. [Signature]
DEPUTY DIRECTOR OF HIGHWAYS, REGION ENGINEER
October 4 2013
John D. Baramelli, P.E.
ENGINEER OF DESIGN AND ENVIRONMENT
October 4 2013
Omer Osman, P.E.
DIRECTOR OF HIGHWAYS, CHIEF ENGINEER



Brian Heil 7/30/13
BRIAN S. HEIL DATE

EXPIRES: 11/30/13

COVERS ALL SHEETS EXCEPT:
LIGHTING PLANS SHT 43-44 (PROVIDED BY IDOT CENTRAL OFFICE)



PRINTED BY THE AUTHORITY
OF THE STATE OF ILLINOIS