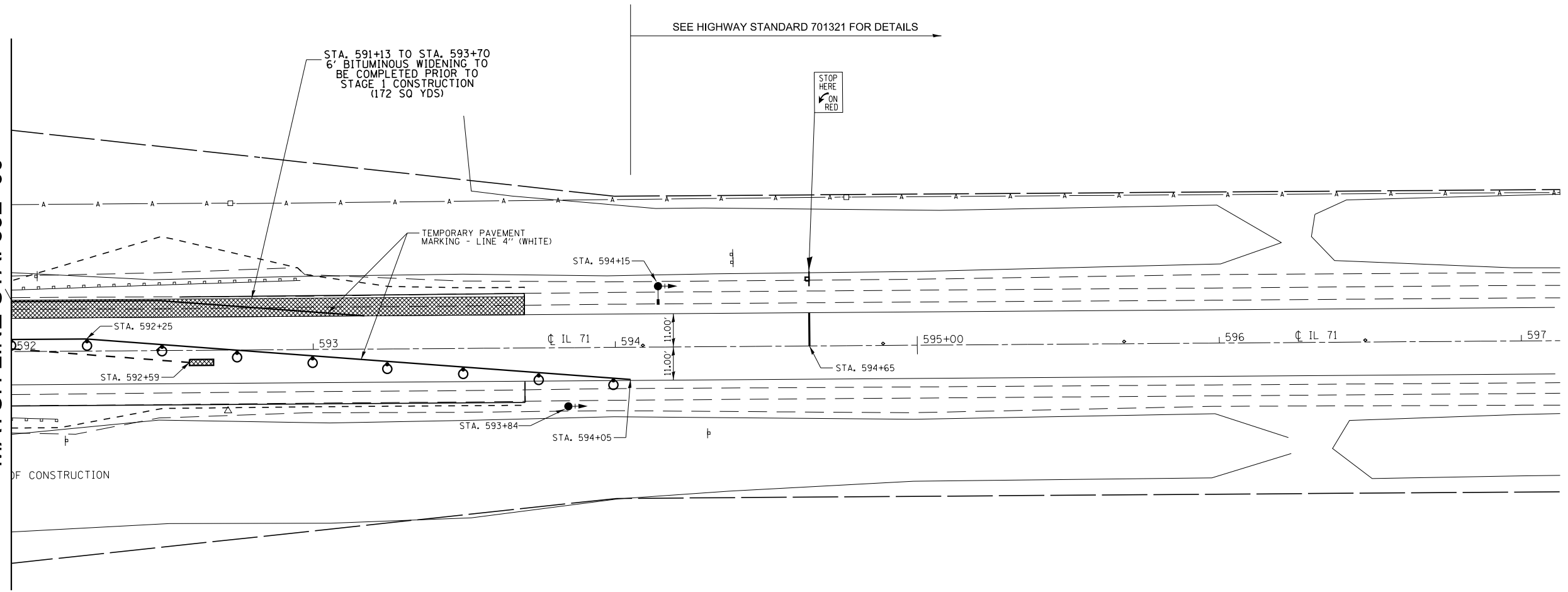


MATCH LINE STA. 592+00



LEGEND

- WORK AREA
- IMPACT ATTENUATOR
- TEMPORARY CONCRETE BARRIER
- DRUM WITH STEADY BURNING BI-DIRECTIONAL LIGHT
- TRAFFIC SIGNAL WITH SIGNAL DIRECTION INDICATED, BACK PLATE AND MICROWAVE DETECTOR
- SIGN
- TYPE III BARRICADE

NOTES

1. SEE HIGHWAY STANDARD 701321 AND 704001 FOR ADDITIONAL TRAFFIC CONTROL INFORMATION.
2. TEMPORARY BRIDGE TRAFFIC SIGNALS, CONCRETE BARRIER, AND IMPACT ATTENUATORS WILL BE PAID FOR SEPARATELY.
3. TYPE III BARRICADES TO BE PLACED WHEN NO WORK IS BEING PERFORMED.

FILE NAME =	USER NAME = pletschtr	DESIGNED -	REVISED -
et:\pw\work\p1dot\pletschtr\d0249716\0366813-sht-staging.dgn		DRAWN -	REVISED -
\$MODELNAME\$	PLOT SCALE = 40.0000' / in.	CHECKED -	REVISED -
	PLOT DATE = 8/2/2013	DATE -	REVISED -

**STATE OF ILLINOIS
DEPARTMENT OF TRANSPORTATION**

TRAFFIC CONTROL - STAGE 1

SCALE: SHEET OF SHEETS STA. 592+00 TO STA. 597+00

F.A.P. RTE.	SECTION	COUNTY	TOTAL SHEETS	SHEET NO.
311	(4)BR-1	LASALLE	38	15
CONTRACT NO. 66B13				
ILLINOIS FED. AID PROJECT				