

STATE OF ILLINOIS
DEPARTMENT OF TRANSPORTATION
DIVISION OF HIGHWAYS
PROPOSED
HIGHWAY PLANS

F.A.P. RTE.	SECTION	COUNTY	TOTAL SHEETS	SHEET NO.
311	(4)BR-1	LASALLE	38	1
		ILLINOIS	CONTRACT NO. 66B13	

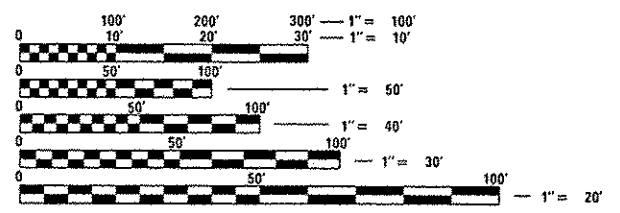
INDEX

1	COVER SHEET
2	GENERAL NOTES & LOCATION
3-7	SUMMARY OF QUANTITIES
8-9	TYPICAL SECTIONS
10-11	SCHEDULES
12	PLAN AND PROFILE SHEETS
13	TRAFFIC CONTROL STAGE I AND II TYPICAL SECTIONS
14-15	TRAFFIC CONTROL STAGE I
16-17	TRAFFIC CONTROL STAGE II
18-28	STRUCTURE REPAIR PLANS
29-32	EXISTING BRIDGE PLANS - FOR INFORMATION ONLY
33-35	DETAILS
36-38	CROSS SECTION SHEETS

LIST OF ILLINOIS DOT HIGHWAY STANDARDS

000001-06	STANDARD SYMBOLS, ABBREVIATIONS AND PATTERNS
001001-02	AREAS OF REINFORCEMENT BARS
001006	DECIMAL OF AN INCH AND OF A FOOT
280001-07	TEMPORARY EROSION CONTROL SYSTEMS
482001-02	HMA SHOULDER ADJACENT TO FLEXIBLE PAVEMENT
482006-03	HMA SHOULDER ADJACENT TO RIGID PAVEMENT
482011-03	HMA SHOULDER STRIPS/SHOULDERS WITH RS OR WIDENING & RS PROJECTS
630001-10	STEEL PLATE BEAM GUARDRAIL
630201-06	PCC/HMA STABILIZATION AT STEEL PLATE BEAM GUARDRAIL
630301-06	SHOULDER WIDENING FOR TYPE I (SPECIAL) GUARDRAIL TERMINALS
635006-03	REFLECTOR AND TERMINAL MARKER PLACEMENT
635011-02	REFLECTOR MARKER AND MOUNTING DETAILS
642006	SHOULDER RUMBLE STRIPS, 8 INCH
701011-03	OFF-ROAD MOVING OPERATIONS 2L, 2W, DAY ONLY
701301-04	LANE CLOSURE, 2L, 2W, SHORT TIME OPERATIONS
701306-03	LANE CLOSURE, 2L, 2W, SLOW MOVING OPERATIONS DAY ONLY, FOR SPEEDS ≥ 45 MPH
701311-03	LANE CLOSURE, 2L, 2W, MOVING OPERATIONS - DAY ONLY
701321-13	LANE CLOSURE, 2L, 2W, BRIDGE REPAIR WITH BARRIER
701326-04	LANE CLOSURE, 2L, 2W, PAVEMENT WIDENING, FOR SPEEDS ≥ 45 MPH
701901-02	TRAFFIC CONTROL DEVICES
704001-07	TEMPORARY CONCRETE BARRIER
780001-03	TYPICAL PAVEMENT MARKINGS
781001-03	TYPICAL APPLICATIONS RAISED REFLECTIVE PAVEMENT MARKERS

701001-02
701006-04



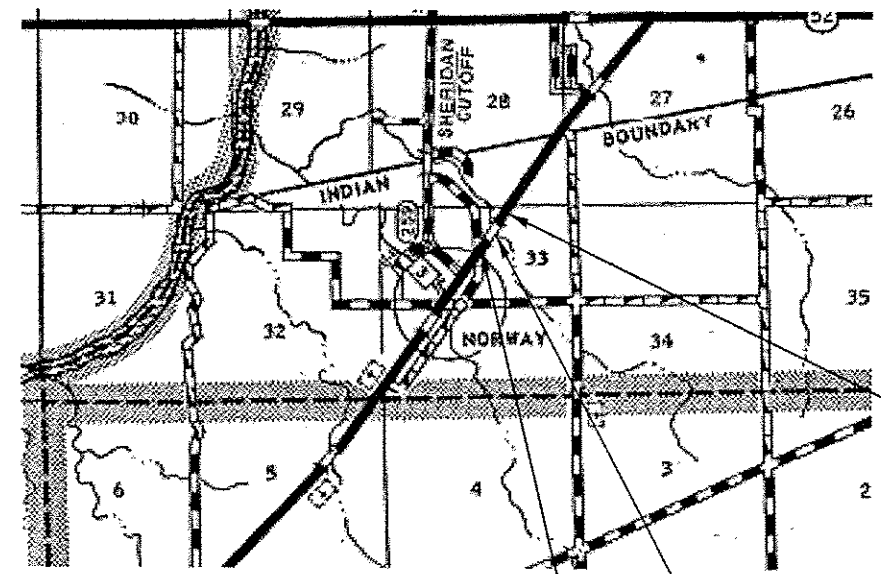
FULL SIZE PLANS HAVE BEEN PREPARED USING STANDARD ENGINEERING SCALES. REDUCED SIZED PLANS WILL NOT CONFORM TO STANDARD SCALES. IN MAKING MEASUREMENTS ON REDUCED PLANS, THE ABOVE SCALES MAY BE USED.

J.U.L.I.E.
 JOINT UTILITY LOCATION INFORMATION FOR EXCAVATION
 1-800-892-0123
 OR 811

PROJECT ENGINEER - CRAIG REED, P.E.
UNIT CHIEF - PAT BRABOY, P.E.
TOWNSHIP - MISSION
CONTRACT NO. 66B13

FAP ROUTE 311 (IL 71)
SECTION (4)BR-1
PROJECT : ACNHPP-0311(047)
TYPE of IMPROVEMENT: REPLACE STRUCTURE WITH BOX CULVERT
LASALLE COUNTY

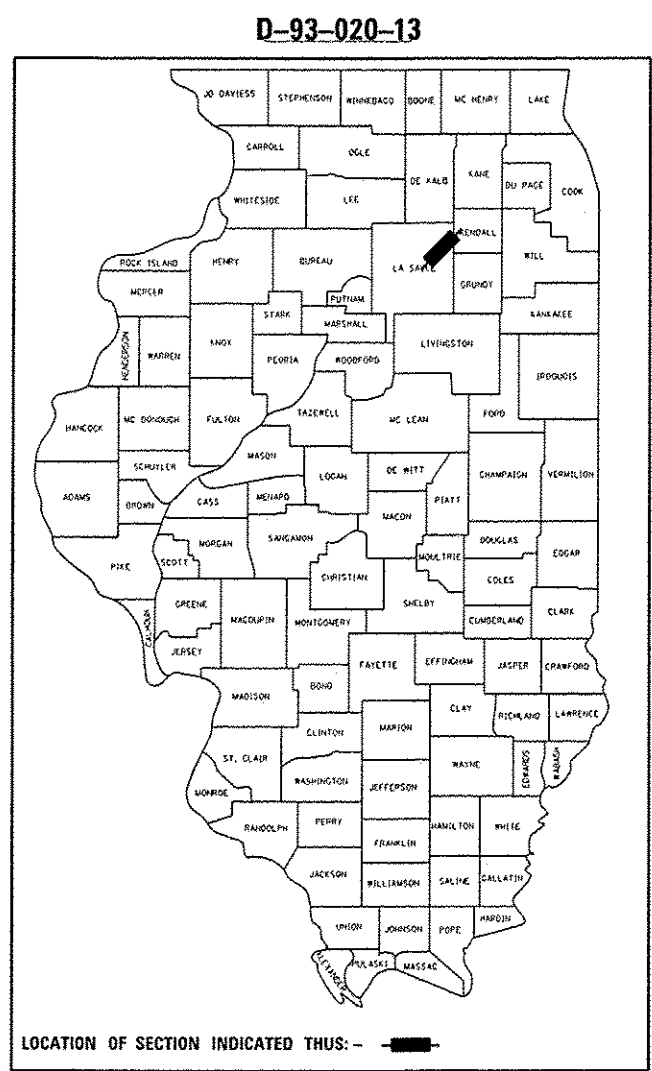
C-93-019-13



BEGIN PROJECT
STA. 588 + 60

REPLACE EXIST. STR. NO. 050-0065,
STA. 590 + 92.00, WITH PROP. STR.
NO. 050-2651, STA. 590 + 88.00, A
DOUBLE 9' X 8' BOX CULVERT

GROSS LENGTH = 510.0 FT. = 0.097 MILE
 NET LENGTH = 510.0 FT. = 0.097 MILE



LOCATION OF SECTION INDICATED THUS: - [arrow symbol] -

FUNCTIONAL CLASSIFICATION
OTHER PRINCIPAL ARTERIAL
 2011 ADT = 4700 VPD
 PV = 89.3% SU = 4.3% MU = 6.4%

STATE OF ILLINOIS
 DEPARTMENT OF TRANSPORTATION
 DIVISION OF HIGHWAYS

SUBMITTED 8-2 20 13
Paul A. Cantor
 DEPUTY DIRECTOR OF HIGHWAYS, REGION ENGINEER

October 4 20 13
John D. Baranzelli P.E.
 ENGINEER OF DESIGN AND ENVIRONMENT

October 4 20 13
Omer Osman P.E.
 DIRECTOR OF HIGHWAYS, CHIEF ENGINEER

PRINTED BY THE AUTHORITY
OF THE STATE OF ILLINOIS

GENERAL NOTES

THE THICKNESS OF HMA SHOWN ON THE PLANS IS THE NOMINAL THICKNESS. DEVIATIONS FROM THE NOMINAL THICKNESS WILL BE PERMITTED WHEN SUCH DEVIATIONS OCCUR DUE TO IRREGULARITIES IN THE EXISTING SURFACE OR BASE ON WHICH THE HMA IS PLACED.

THE BASE COURSE WIDENING SHALL BE CARRIED THROUGH ALL ENTRANCES, SIDE ROADS, AND MAILBOX TURNOUTS. EXCEPTIONS WILL BE SHOWN ON THE PLANS.

EXCEPT AS NOTED ON THE PLANS, PAVEMENT GRADES SHOWN ARE AT THE TOP OF PAVEMENT SURFACES.

THE ENGINEER WILL BE THE SOLE JUDGE CONCERNING CURING TIME FOR THE VARIOUS HMA LIFTS.

FOR STABILIZATION, ALL TYPE III BARRICADES SHALL REQUIRE A MINIMUM OF FOUR SAND BAGS PER BARRICADE.

SEEDING SHALL NOT BE PERMITTED AT ANY TIME WHEN THE GROUND IS FROZEN, WET, OR IN AN UNTILLABLE CONDITION. LOCATIONS TO BE SEEDED WILL BE DETERMINED BY THE ENGINEER.

ONLY THOSE TREES DESIGNATED BY THE ENGINEER OR LISTED IN THE TREE REMOVAL SCHEDULE SHALL BE REMOVED. THE CONTRACTOR SHALL PROTECT ALL REMAINING TREES FROM DAMAGE DUE TO HIS OPERATIONS.

THE FINISHED EARTHWORK SHALL HAVE A VEGETATION SUSTAINING SOIL COVERING THE TOP FOUR INCHES (100 MILLIMETERS) IN AREAS TO BE SEEDED OR SODDED. THE VEGETATION SUSTAINING SOIL REQUIRED WILL NOT BE PAID FOR SEPARATELY BUT SHALL BE INCLUDED IN THE COST OF FURNISHED EXCAVATION.

ALL ELEVATIONS REFERRING TO U.S.G.S. MEAN SEA LEVEL DATUM.

ADDITIONAL LEVELING BINDER, AT THE RATE GIVEN ON THE TYPICAL SECTIONS, HAS BEEN ADDED TO THE QUANTITIES TO CORRECT TO A 3/16"/FT. (1.5%) CROWN ON SECTIONS OF EXISTING ROADWAYS.

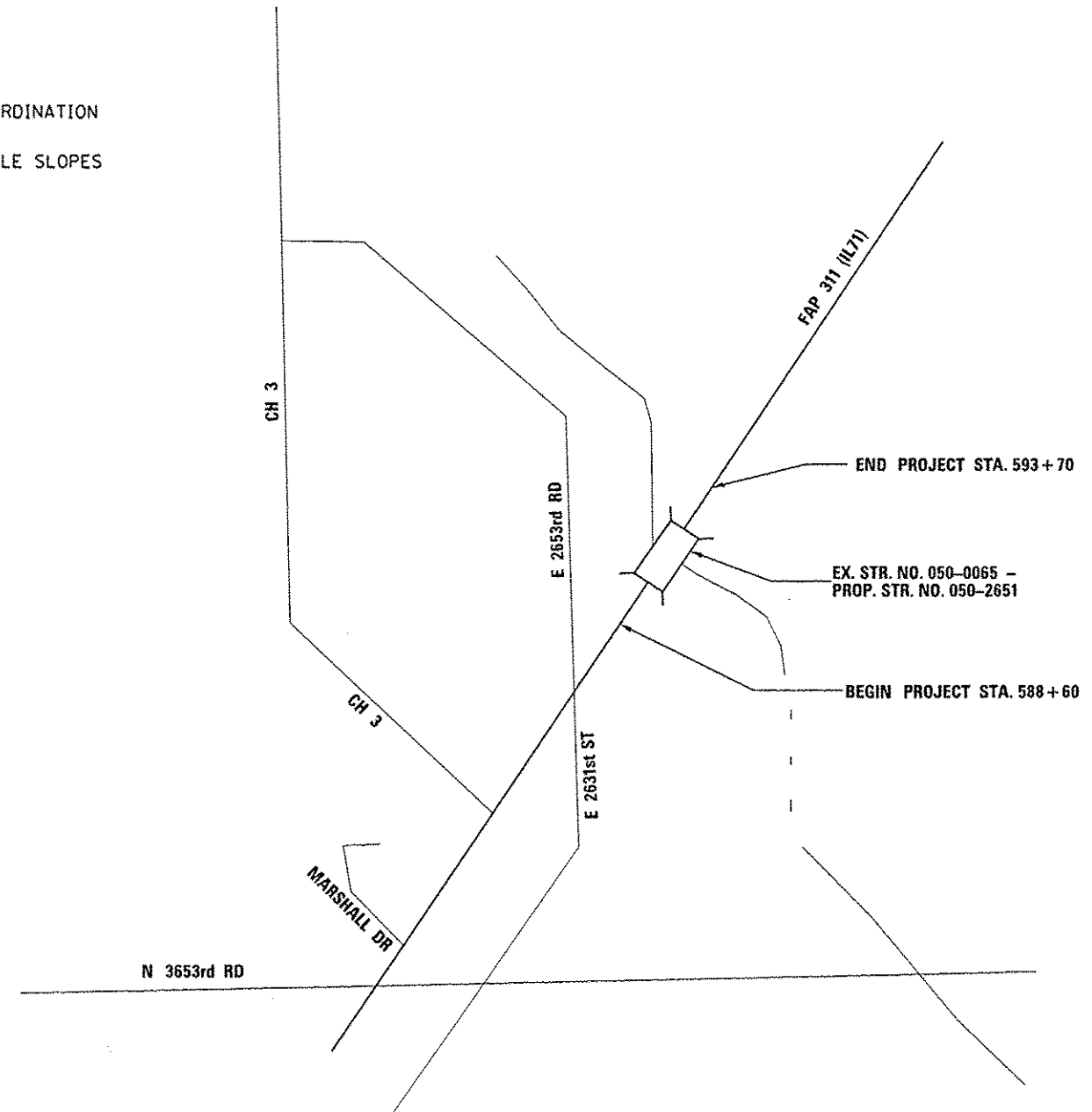
ANY REFERENCE TO A STANDARD IN THESE PLANS SHALL BE INTERPRETED TO MEAN THE EDITION AS INDICATED BY THE SUBNUMBER SHOWN IN THE LIST OF STANDARDS OR THE COPY INCLUDED IN THESE PLANS.

THE FOLLOWING RATES OF APPLICATION HAVE BEEN USED IN CALCULATING PLAN QUANTITIES:

GRANULAR MATERIALS	2.05	TONS / CU YD
HMA RESURFACING	112	LBS / SQ YD / IN
SHORT TERM PAVEMENT MARKING	10	FT /100 FT OF APPLICATION
MIX FOR CRACKS, JTS & FLGWS	0.0003	TONS / SQ YD
LEVEL BINDER (HAND METHOD)	0.0005	TONS / SQ YD
SUPPLEMENTAL WATERING	3	GAL / SQ YD / APPLICATION
CALCIUM CHLORIDE	2	LB / SQ YD / APPLICATION
AGGREGATE DITCH CHECKS	5	TONS AGGREGATE

THE CONTRACTOR SHALL CONTACT JULIE AT LEAST 48 HOURS PRIOR TO EXCAVATION TO DETERMINE WHICH UTILITIES ARE IN THE AREA.

- COMMITMENTS:**
1. ENVIRONMENTAL COORDINATION
 2. 404 PERMIT
 3. LIST OF NON-MOWABLE SLOPES



STATE OF ILLINOIS
DEPARTMENT OF TRANSPORTATION
DISTRICT THREE

PREPARED BY: *[Signature]*
DISTRICT STUDIES & PLANS ENGINEER

DATE: 8-2-13

EXAMINED BY: *[Signature]*
DISTRICT CONSTRUCTION ENGINEER

[Signature]
DISTRICT MATERIALS ENGINEER

[Signature]
DISTRICT OPERATIONS ENGINEER

80% FED. / 20% STATE

CONSTRUCTION CODE

CODE NO.	ITEM	UNIT	TOTAL QUANTITY	ROADWAY	BOX CULVERT
				0004	0011 S.N. 050-2651
20100110	TREE REMOVAL (6 TO 15 UNITS DIAMETER)	UNIT	30	30	
20200100	EARTH EXCAVATION	CU YD	184	184	
20400800	FURNISHED EXCAVATION	CU YD	381	381	
20700220	POROUS GRANULAR EMBANKMENT	CU YD	661		661
25000300	SEEDING, CLASS 3	ACRE	0.9	0.9	
25000400	NITROGEN FERTILIZER NUTRIENT	POUND	81	81	
25000500	PHOSPHORUS FERTILIZER NUTRIENT	POUND	81	81	
25000600	POTASSIUM FERTILIZER NUTRIENT	POUND	81	81	
25100635	HEAVY DUTY EROSION CONTROL BLANKET	SQ YD	4356	4356	
28000250	TEMPORARY EROSION CONTROL SEEDING	POUND	180	180	
28000305	TEMPORARY DITCH CHECKS	FOOT	80	80	
28000400	PERIMETER EROSION BARRIER	FOOT	560	560	
28100107	STONE RIPRAP, CLASS A4	SQ YD	210		210
28200200	FILTER FABRIC	SQ YD	210		210

14

FILE NAME : c:\p\work\p\pidot\plotsch\d0249716\0366813-ah\soq.dgn	USER NAME : plotsch	DESIGNED - _____	REVISED - _____	STATE OF ILLINOIS DEPARTMENT OF TRANSPORTATION	SUMMARY OF QUANTITIES				F.A.P. RTE. 311	SECTION (4)BR-1	COUNTY LASALLE	TOTAL SHEETS 38	SHEET NO. 3
	PLOT SCALE : 100.0000' / 1" =	CHECKED - _____	REVISED - _____		SCALE: _____	SHEET NO. _____ OF _____ SHEETS	STA. _____	TO STA. _____	ILLINOIS FED. AID PROJECT CONTRACT NO. 66B13				
	PLOT DATE : 8/2/2013	DATE - _____	REVISED - _____										

80% FED. / 20% STATE

CONSTRUCTION CODE

CODE NO.	ITEM	UNIT	TOTAL QUANTITY	CONSTRUCTION CODE	
				ROADWAY 0004	BOX CULVERT 0011 S. N. 050-2651
28400100	GABIONS	CU YD	17		17
31100300	SUBBASE GRANULAR MATERIAL, TYPE A 4"	SQ YD	532	532	
35501343	HOT-MIX ASPHALT BASE COURSE, 15"	SQ YD	279	279	
40600400	MIXTURE FOR CRACKS, JOINTS, AND FLANGEWAYS	TON	1	1	
40600525	LEVELING BINDER (HAND METHOD), N50	TON	1	1	
40600625	LEVELING BINDER (MACHINE METHOD), N50	TON	86	86	
40600982	HOT-MIX ASPHALT SURFACE REMOVAL - BUTT JOINT	SQ YD	480	480	
40600990	TEMPORARY RAMP	SQ YD	16	16	
40603310	HOT-MIX ASPHALT SURFACE COURSE, MIX "C", N50	TON	171	171	
44000100	PAVEMENT REMOVAL	SQ YD	200	200	
44004000	PAVED DITCH REMOVAL	FOOT	48	48	
44004250	PAVED SHOULDER REMOVAL	SQ YD	639	639	
48101200	AGGREGATE SHOULDERS, TYPE B	TON	29	29	
48203033	HOT-MIX ASPHALT SHOULDERS, 9"	SQ YD	1013	1013	

80% FED./20% STATE

CONSTRUCTION CODE

CODE NO.	ITEM	UNIT	TOTAL QUANTITY	CONSTRUCTION CODE	
				ROADWAY <i>0004</i>	BOX CULVERT 0011 S. N. 050-2651
50100100	REMOVAL OF EXISTING STRUCTURES	EACH	1		1
50105220	PIPE CULVERT REMOVAL	FOOT	79	79	
50800205	REINFORCEMENT BARS, EPOXY COATED	POUND	40590		40590
50800515	BAR SPLICERS	EACH	120		120
51500100	NAME PLATES	EACH	1		1
54003000	CONCRETE BOX CULVERTS	CU YD	203.6		203.6
* 63000001	STEEL PLATE BEAM GUARDRAIL, TYPE A, 6 FOOT POSTS	FOOT	212	212	
* 63100169	TRAFFIC BARRIER TERMINAL, TYPE 1 (SPECIAL) FLARED	EACH	4	4	
63200310	GUARDRAIL REMOVAL	FOOT	586	586	
64200108	SHOULDER RUMBLE STRIPS, 8 INCH	FOOT	1020	1020	
67000400	ENGINEER'S FIELD OFFICE, TYPE A	CAL MO	6	6	
67100100	MOBILIZATION	L SUM	1	1	
70100405	TRAFFIC CONTROL AND PROTECTION, STANDARD 701321	EACH	1	1	
70100460	TRAFFIC CONTROL AND PROTECTION, STANDARD 701306	L SUM	1	1	

FILE NAME <i>chp\work\pilot\pletchr\0249716\03</i>	USER NAME pletchr	DESIGNED ---	REVISED ---	STATE OF ILLINOIS DEPARTMENT OF TRANSPORTATION	SUMMARY OF QUANTITIES	F.A.P. RTE.	SECTION	COUNTY	TOTAL SHEETS	SHEET NO.	
	<i>0613-sht-soq.dgn</i>	DRAWN ---	REVISED ---			311	4BR-1	LASALLE	38	5	
	PLOT SCALE 100.0000	CHECKED ---	REVISED ---			SCALE		SHEET NO. OF SHEETS		STA. TO STA.	
	PLOT DATE 8/2/2013	DATE ---	REVISED ---			ILLINOIS FED. AID PROJECT CONTRACT NO. 66B13					

801.FED./201.STATE

CONSTRUCTION CODE

CODE NO.	ITEM	UNIT	TOTAL QUANTITY	CONSTRUCTION CODE	
				ROADWAY 0004	BOX CULVERT 0011 S. N. 050-2651
70100500	TRAFFIC CONTROL AND PROTECTION, STANDARD 701326	L SUM	1	1	
70106500	TEMPORARY BRIDGE TRAFFIC SIGNALS	EACH	1	1	
70300100	SHORT TERM PAVEMENT MARKING	FOOT	153	153	
70300220	TEMPORARY PAVEMENT MARKING - LINE 4"	FOOT	1020	1020	
70300240	TEMPORARY PAVEMENT MARKING - LINE 6"	FOOT	255	255	
70301000	WORK ZONE PAVEMENT MARKING REMOVAL	SQ FT	751	751	
70400100	TEMPORARY CONCRETE BARRIER	FOOT	404	404	
70400200	RELOCATE TEMPORARY CONCRETE BARRIER	FOOT	332	332	
70600250	IMPACT ATTENUATORS, TEMPORARY (NON- REDIRECTIVE), TEST LEVEL 3	EACH	2	2	
70600350	IMPACT ATTENUATORS, RELOCATE (NON- REDIRECTIVE), TEST LEVEL 3	EACH	2	2	
* 78001110	PAINT PAVEMENT MARKING - LINE 4"	FOOT	2760	2760	
* 78001130	PAINT PAVEMENT MARKING - LINE 6"	FOOT	255	255	
* 78100100	RAISED REFLECTIVE PAVEMENT MARKER	EACH	6	6	
* 78200410	GUARDRAIL MARKERS, TYPE A	EACH	8	8	

200 10 15

80% FED. / 20% STATE

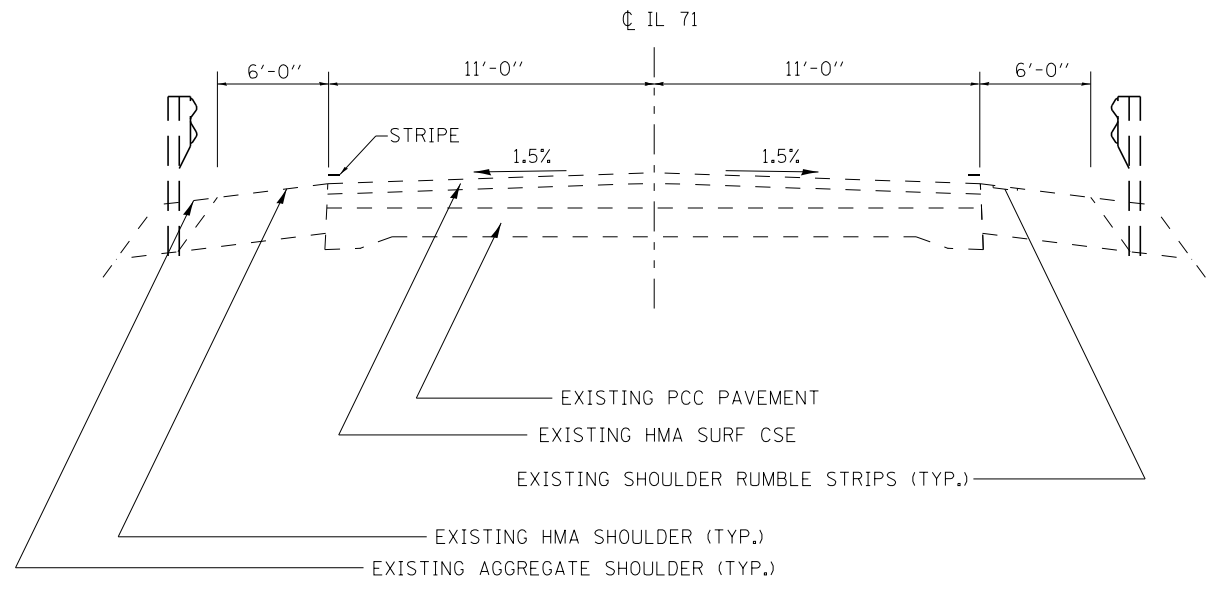
CODE NO.	ITEM	UNIT	TOTAL QUANTITY	CONSTRUCTION CODE	
				ROADWAY 0004	BOX CULVERT 0011 S. N. 050-2651
* 78201000	TERMINAL MARKER - DIRECT APPLIED	EACH	4	4	
78300100	PAVEMENT MARKING REMOVAL	SQ FT	218	218	
78300200	RAISED REFLECTIVE PAVEMENT MARKER REMOVAL	EACH	6	6	
X4060110	BITUMINOUS MATERIALS (PRIME COAT)	POUND	1377	1377	
X4401198	HOT-MIX ASPHALT SURFACE REMOVAL, VARIABLE DEPTH	SQ YD	71	71	
X7200201	WIDTH RESTRICTION SIGNING	L SUM	1	1	
Z0030850	TEMPORARY INFORMATION SIGN	SQ FT	42.5	42.5	
Z0028462	GEOTEXTILE RETAINING WALL	SQ FT	78		78
Z0073002	TEMPORARY SOIL RETENTION SYSTEM	SQ FT	335		335

9

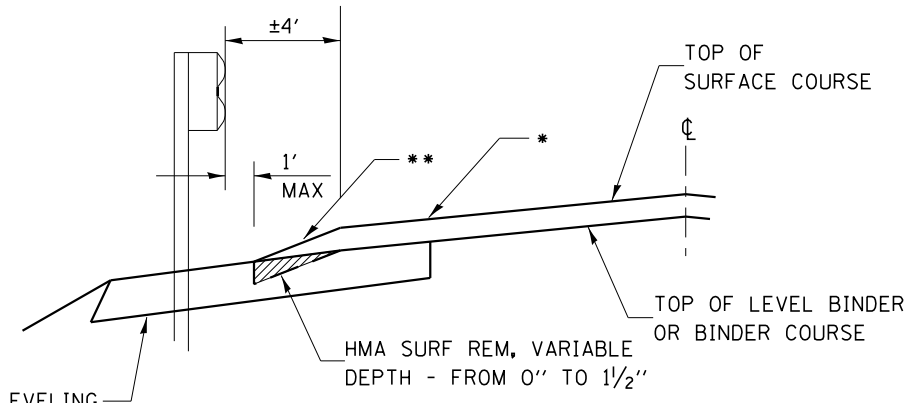
Rev.

* Specialty Items

FILE NAME *	USER NAME * plotschr	DESIGNED -	REVISED -	STATE OF ILLINOIS DEPARTMENT OF TRANSPORTATION	SUMMARY OF QUANTITIES	F.A.P. RTE.	SECTION	COUNTY	TOTAL SHEETS	SHEET NO.
c:\p\work\p\plotschr\0249716\036	013-ent-sog.dgn	DRAWN -	REVISED -			311	(4)BR-1	LASALLE	38	7
PLOT SCALE * 100.0000 ** 1/4"	CHECKED -	REVISED -	REVISED -			CONTRACT NO. 66B13				
PLOT DATE * 8/2/2013	DATE -	REVISED -	REVISED -			ILLINOIS FED. AID PROJECT				



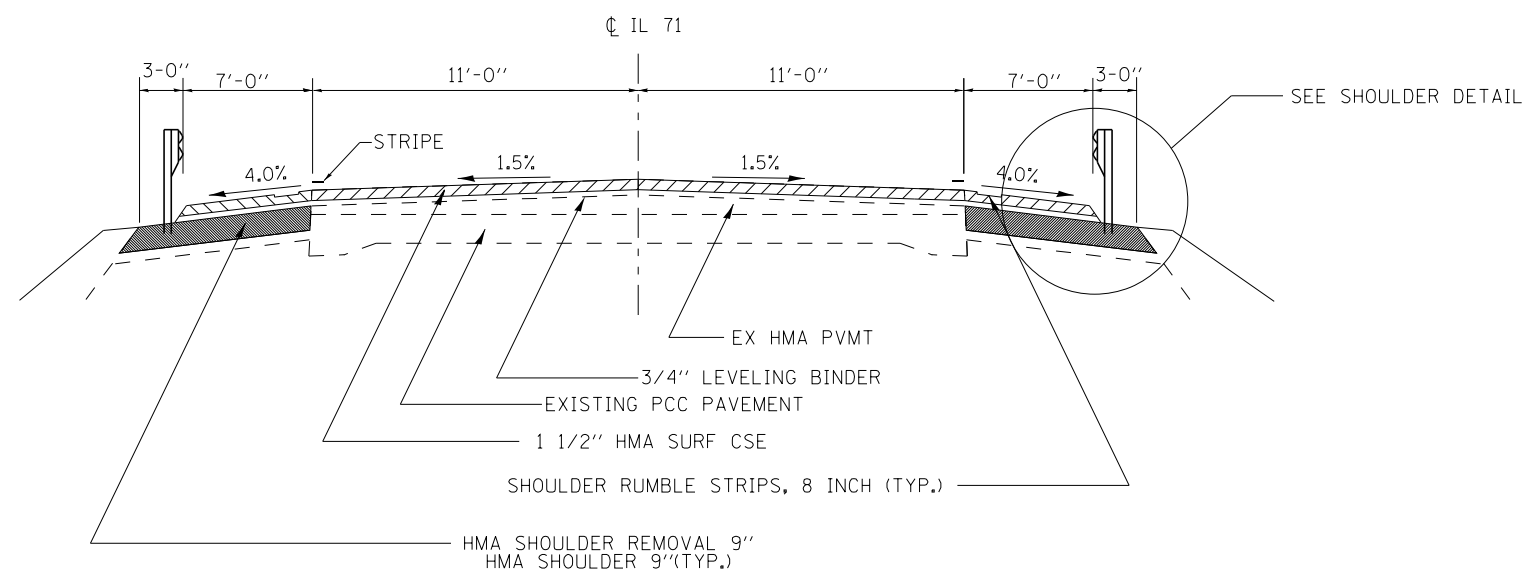
EXISTING ROADWAY TYPICAL SECTION



HMA SHOULDER 9" W/LEVELING BINDER-PLACE LEVELING BINDER PRIOR TO GUARDRAIL INSTALLATION

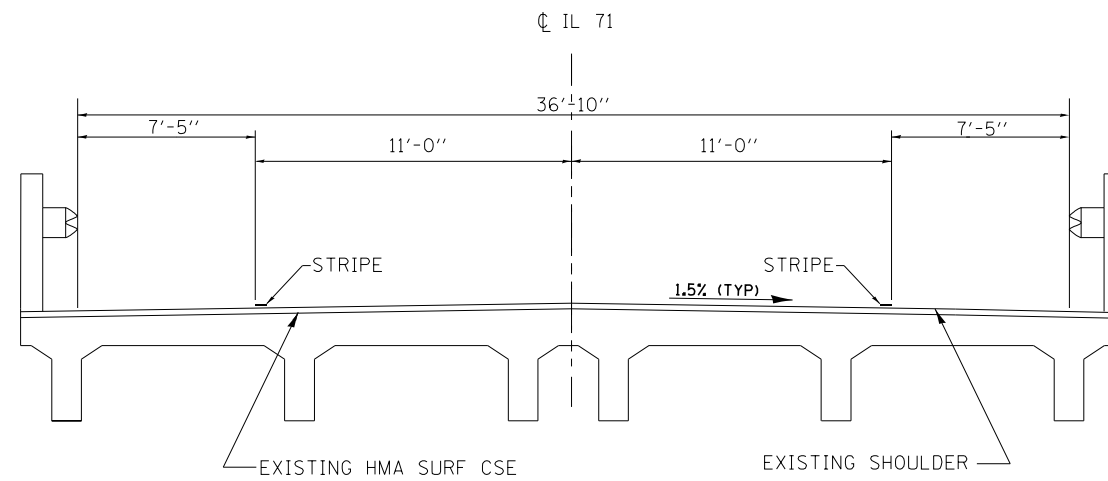
- * PROPOSED MAINLINE CROSS SLOPE, INCHES/FEET
- ** PROPOSED SHOULDER CROSS SLOPE, INCHES/FEET

SHOULDER DETAIL

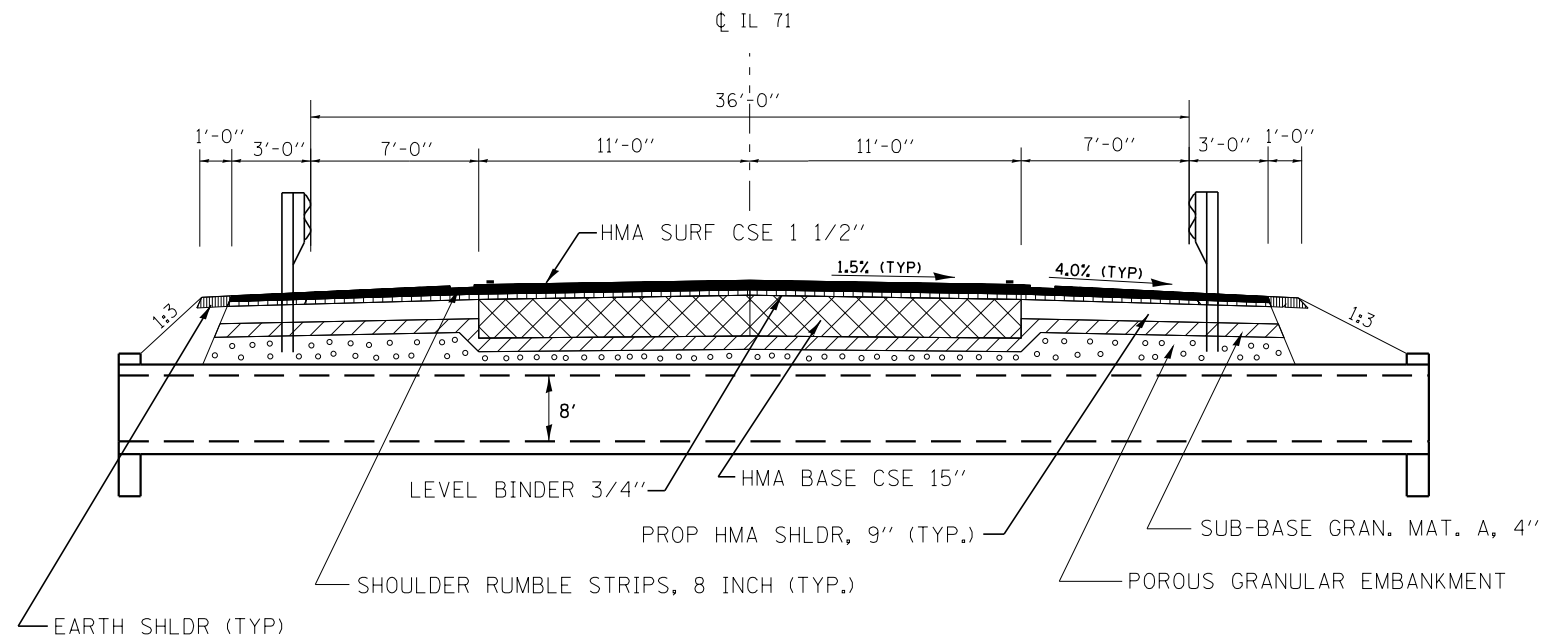


PROPOSED ROADWAY TYPICAL SECTION

	HMA Base Course, 15"	Level Binder	Surface	HMA Shoulder 9"
PG Grade	PG64-22	PG64-22	PG64-22	PG64-22
Design Air Voids	4.0% @ N50	4.0% @ N50	4.0% @ N50	2.0% @ N30
Mixture Composition	IL 19.0	IL 9.5	IL 9.5	IL 19.0L
Friction Aggregate			Mixture C	
Density Control	Cores	Satisfaction of Engineer	Cores	Cores



EXISTING BRIDGE TYPICAL SECTION



PROPOSED CULVERT TYPICAL SECTION
(NOT TO SCALE)

FILE NAME =	USER NAME = pletschr	DESIGNED -	REVISED -	STATE OF ILLINOIS DEPARTMENT OF TRANSPORTATION	TYPICAL SECTIONS				F.A.P. RTE.	SECTION	COUNTY	TOTAL SHEETS	SHEET NO.
et:\pw\work\p\dot\pletschr\d0249716\0366813-sht-details.DGN		DRAWN -	REVISED -		311	(4)BR-1	LASALLE	38	9				
\$MODELNAME\$	PLOT SCALE = 100.0000' / in.	CHECKED -	REVISED -		CONTRACT NO. 66B13								
	PLOT DATE = 8/2/2013	DATE -	REVISED -		SCALE:	SHEET	OF	SHEETS	STA.	TO	STA.	ILLINOIS FED. AID PROJECT	

MAINLINE SCHEDULE											
STA. TO STA.		LENGTH	AREA	HMA SURF CSE MIX C N50	LEVEL BINDER (MM)	LEVEL BINDER (HM)	HMA SURF REM, BUTT JOINT	MIX FOR JTS, CRACKS & FLGWYS	BIT. MAT'L (PR CT)	AGG SHLD TY B	TEMP RAMP
		FT	SQ YD	TON	TON	TON	SQ YD	TON	POUND	TON	SQ YD
588+60	590+35	175	700	58.8	29.4	0.4	240.0	0.2	472.5	10.0	8.0
590+35	591+49	114	456	38.3	19.2	0.2		0.1	307.8	6.5	
591+49	593+70	221	884	74.3	37.1	0.4	240.0	0.3	596.7	12.6	8.0
GRAND TOTALS		510	2,040	171	86	1	480	1	1,377	29	16

PAVEMENT MARKING SCHEDULE										
LOCATION		DISTANCE	PAINT PVT MK 4"	PAINT PVT MK 6"	TEMP MARK 4"	TEMP MARK 6"	SHORT-TERM MARK	WORK ZONE PAVT MARK REM	RAISED REFLECTIVE PVMT MARKERS	REMOVAL RAISED REFLECTIVE PVT MARKERS
STA		FOOT	FOOT	FOOT	FOOT	FOOT	FOOT	SQ. FT.	EACH	EACH
RURAL										
588+60	TO 593+70	510	2040.0	255	1020.0	128	153.0	17.0	6	6
NO PASSING ZONES(1)										
588+60	TO 592+20	360	720.0							
GRAND TOTALS		870	2760	255	1020	128	153	17	6	6

(1) R.E. TO VERIFY NO PASSING ZONES PRIOR TO MILLING OPERATION

*NOTE: ALL PAINT PVT MK QUANTITIES HAVE BEEN DOUBLED. PAINT PVT MK WILL BE APPLIED IN 2 SEPARATE APPLICATIONS. SEE SPECIAL PROVISIONS.

PAVEMENT REMOVAL & REPLACEMENT								
STA. TO STA.		LENGTH	PAVT REM	SUB-BASE GRANULAR MATERIAL 4" (1)	HMA BASE CSE 15"	POROUS GRANULAR EMBANK	PAVED DITCH REMOVAL	PIPE CULVERT REMOVAL
		FEET	SQ YD	SQ YD	SQ YD	CU YD	FOOT	FEET
590+35	590+76	41	100.2	191.3	100.2	238.0	48.0	79.0
590+76	591+08	32		149.3	78.2	185.0		
591+08	591+49	41	100.2	191.3	100.2	238.0		
GRAND TOTALS		114	200	532	279	661	48	79

(1) ALSO PLACE SUB-BASE GRANULAR MATERIAL UNDER PROPOSED HMA SHOULDERS IN THIS SECTION. SUB-BASE GRANULAR MATERIAL IS NOT REQUIRED UNDER OTHER PROPOSED HMA SHOULDERS ON THIS PROJECT.

GUARDRAIL								
LOCATION	TERM MRK, DA	TBT TY 1 SP (FLARED)	SPBGR TY A 6' POSTS (FOOT)	HMA SURF REM, VARIABLE DEPTH	GUARDRAIL MARKERS, TYPE A	HMA SHLD 9" •	HMA SHLD REMOVAL	GR REMOVAL
STA TO STA	EA	EA	FT	SQ YD	EA	SQ YD	SQ YD	FOOT
589+33.5 TO 591+39.5 RT (EBL)	2	2	106	35	4			293
590+35 TO 592+41 LT (WBL)	2	2	106	35	4			293
588+60 TO 593+70 (EBL AND WBL)						1013	639	
TOTAL	4	4	212	71	8	1013	639	586

*PLACE 443 SQ YD IN EBL PRIOR TO STAGE I CONSTRUCTION

WORK ZONE TRAFFIC CONTROL								
LOCATION		LENGTH	TEMPORARY CONCRETE BARRIER	RELOCATE TEMPORARY CONCRETE BARRIER	IMPACT ATTENUATORS, TEMPORARY (NON-REDIRECTIONAL), TEST LEVEL 3	IMPACT ATTENUATORS, RELOCATE (NON-REDIRECTIONAL), TEST LEVEL 3	WORK ZONE PAVEMENT MARKING REMOVAL	PAVEMENT MKG REMOVAL**
FROM	TO	FOOT	FOOT	FOOT	EACH	EACH	SQ FT	SQ FT
STAGE 1		510					358	168
589+27	592+59		332		2			
588+60	590+81	221						
590+81	591+13	32						
591+13	593+70	257						
STAGE 2							376	50
587+88	592+91		72	332		2		
588+60	590+71	211						
590+71	591+03	32						
591+03	593+70	267						
TOTALS		1020	404	332	2	2	734	218

** NOTE: THIS QUANTITY IS FOR REMOVAL OF EXISTING PAVEMENT MARKING NECESSARY TO COMPLETE STAGE CONSTRUCTION.

SEEDING SCHEDULE									
LOCATION	OFFSET LT / RT	SEEDING CLASS 3	NITROGEN FERTILIZER NUTRIENT	POTASSIUM FERTILIZER NUTRIENT	PHOSPHOROUS FERTILIZER NUTRIENT	HEAVY DUTY EROSION CONTROL BLANKET	TEMP DITCH CHECKS	PERIMETER EROSION BARRIER	TEMP EROSION CONTROL SEEDING
STA TO STA		ACRE	POUND	POUND	POUND	SQ YD	FOOT	FOOT	POUND
589+00 TO 590+36	RT	0.15	14	14	14	726	20	160	30
590+88.5 TO 591+74.5	RT	0.30	27	27	27	1452	20	120	60
590+00 TO 590+87	LT	0.15	14	14	14	726	20	110	30
591+12 TO 592+76	LT	0.30	27	27	27	1452	20	170	60
GRAND TOTAL		0.9	81	81	81	4356.0	80.0	560.0	180

EARTH EXCAVATION SCHEDULE					
(1) STA TO STA	(2) EARTH EX	(3) EARTH EX ADJ FOR SHRINKAGE	(4) EMBANK	(5) EARTHWORK BAL WASTE(+) OR SHORTAGE(-)	
LANE	CU YD	CU YD	CU YD	CU YD	CU YD
STA 590+00 TO STA590+75	EB/WB	122	92	156	-65
STA 591+00 TO STA 593+00	EB/WB	62	47	363	-317
GRAND TOTALS		184	138	519	-381

COLUMNS 2, AND 4-LOCATION AND QUANTITIES FROM CROSS SECTIONS
 COLUMN 3- QUANTITY OF EARTH EXCAVATION (CUT) ADJUSTED FOR A SHRINKAGE FACTOR OF 25% (1- SHRINKAGE FACTOR)
 COLUMN 5 EARTHWORK REQUIRED (PAY FOR AS FUNISHED EXCAVATION)

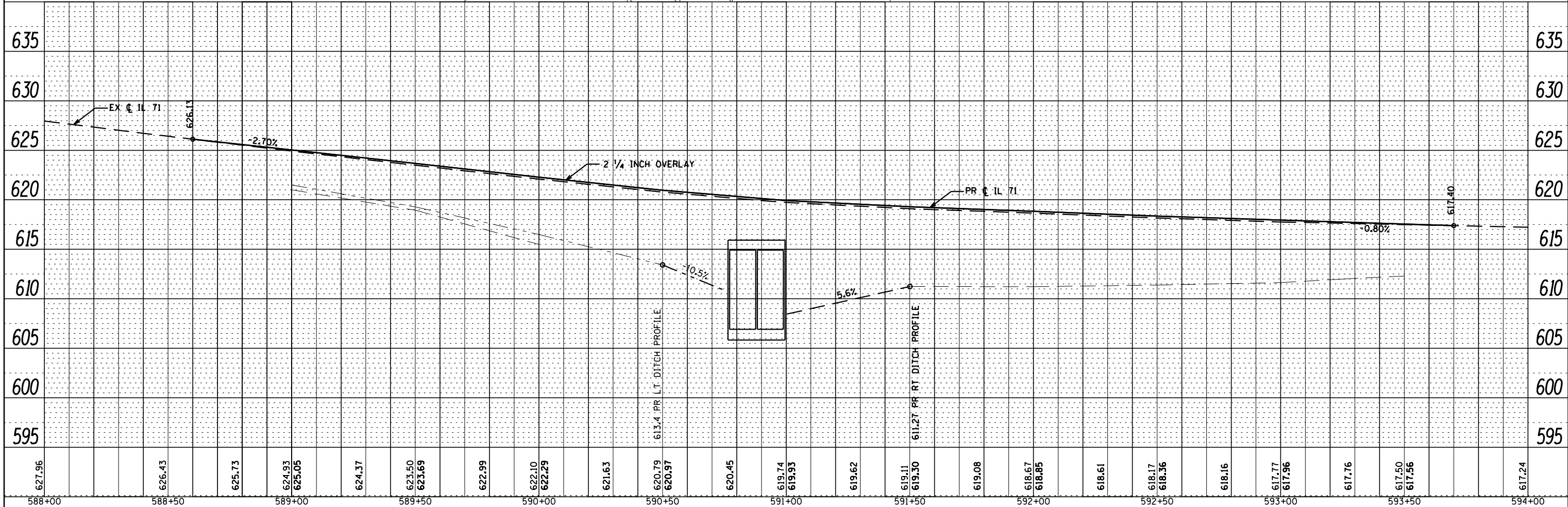
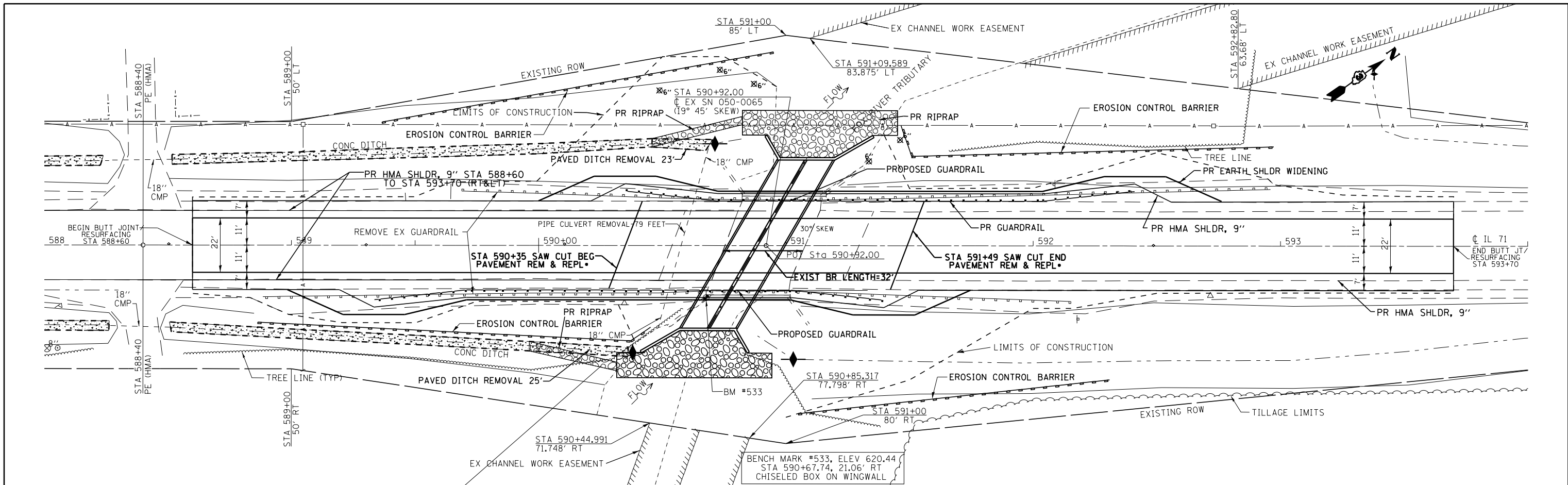
NOTE ALL MATERIAL EXCAVATED ON THIS PROJECT MUST BE USED AS FILL. NO MATERIAL WILL BE ALLOWED TO BE REMOVED FROM THE JOB SITE

TREE REMOVAL SCHEDULE	
STATION	TREE REMOVAL (6-15 UNIT DIA)
	UNITS
WBL	
5 TREES NEAR BOX CULVERT @ APPR. 6" EACH	30
TOTAL	30

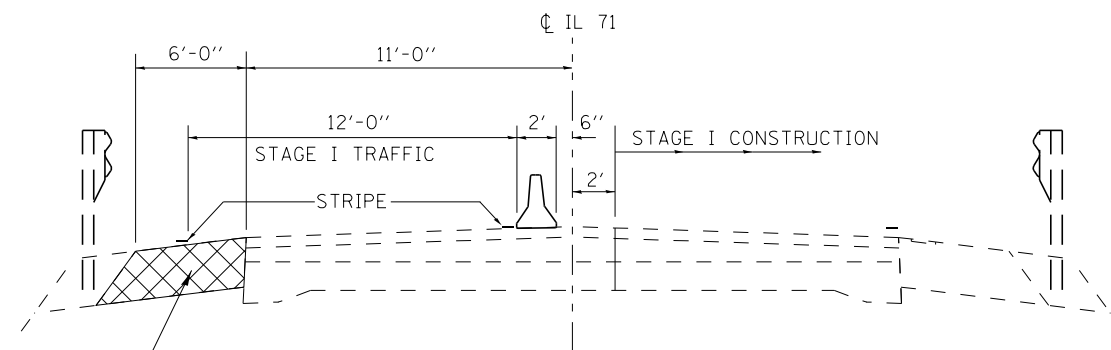
ENGINEER IS THE SOLE JUDGE ON WHICH TREES WILL BE REMOVED

PLAN	SURVEYED	BY	DATE
	PLOTTED		
	NOTE BOOK		
	NO.		
	CHECKED		
	FILE NAME		

PROFILE	SURVEYED	BY	DATE
	PLOTTED		
	GRADES CHECKED		
	NO.		
	STRUCTURE		
	NOTATIONS		



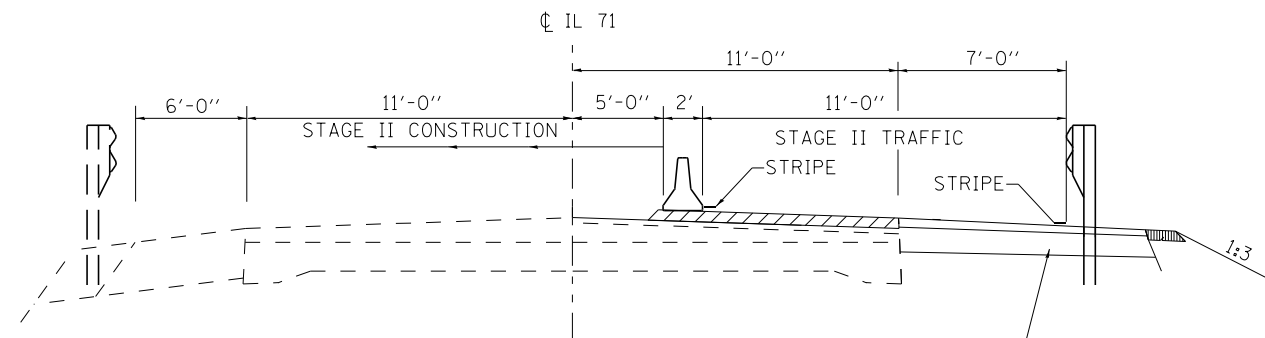
FILE NAME =	USER NAME = pletschr	DESIGNED -	REVISED -	STATE OF ILLINOIS DEPARTMENT OF TRANSPORTATION	IL 71 Plan and Profile Sheet SN 050-0065		F.A.P. RTE. 311	SECTION (4)BR-1	COUNTY LaSalle	TOTAL SHEETS 38	SHEET NO. 12
c:\pwork\pwsdot\pletschr\d0249716\0366813-sht-plnpr.f.dgn		DRAWN -	REVISED -		SCALE: 1:20	SHEET NO. OF SHEETS	STA. 588+00 TO STA. 594+00	CONTRACT NO. 66B13		ILLINOIS FED. AID PROJECT	
PLOT SCALE = 40.0000' / in.		CHECKED -	REVISED -								
PLOT DATE = 8/2/2013		DATE -	REVISED -								



STAGE I TYPICAL SECTION

•REPLACE WITH 7' WIDE HMA SHOULDER

6' EXISTING HMA SHOULDER
REPLACE WITH HMA SHOULDERS, 9"
PRIOR TO STAGE I CONSTRUCTION*



STAGE II TYPICAL SECTION

HMA SHOULDERS, 9"
CONSTRUCTED IN STAGE I

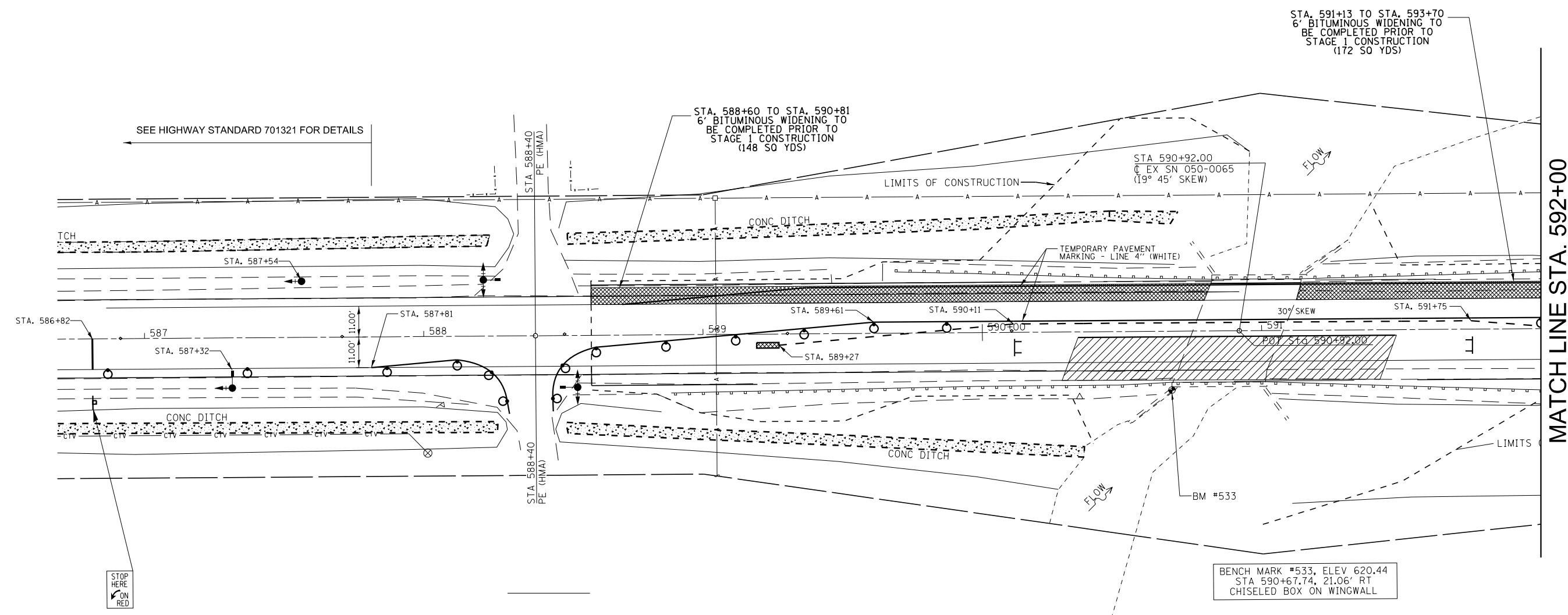
FILE NAME =	USER NAME = pletschr	DESIGNED -	REVISED -
ct:\pw\work\pwidot\pletschr\d0249716\0366813-sht-details.DGN		DRAWN -	REVISED -
	PLOT SCALE = 100.0000' / in.	CHECKED -	REVISED -
	PLOT DATE = 8/2/2013	DATE -	REVISED -

STATE OF ILLINOIS
DEPARTMENT OF TRANSPORTATION

STAGE CONSTRUCTION TYPICAL SECTIONS

SCALE: SHEET NO. OF SHEETS STA. TO STA.

F.A.P. RTE.	SECTION	COUNTY	TOTAL SHEETS	SHEET NO.
311	(4)BR-1	LASALLE	38	13
CONTRACT NO. 66B13				
FED. ROAD DIST. NO. ILLINOIS FED. AID PROJECT				



SEE HIGHWAY STANDARD 701321 FOR DETAILS

STA. 588+60 TO STA. 590+81
6' BITUMINOUS WIDENING TO
BE COMPLETED PRIOR TO
STAGE 1 CONSTRUCTION
(148 SO YDS)

STA. 591+13 TO STA. 593+70
6' BITUMINOUS WIDENING TO
BE COMPLETED PRIOR TO
STAGE 1 CONSTRUCTION
(172 SO YDS)

STA 590+92.00
EX SN 050-0065
(19° 45' SKEW)

BENCH MARK #533, ELEV 620.44
STA 590+67.74, 21.06' RT
CHISELED BOX ON WINGWALL

MATCH LINE STA. 592+00

LEGEND

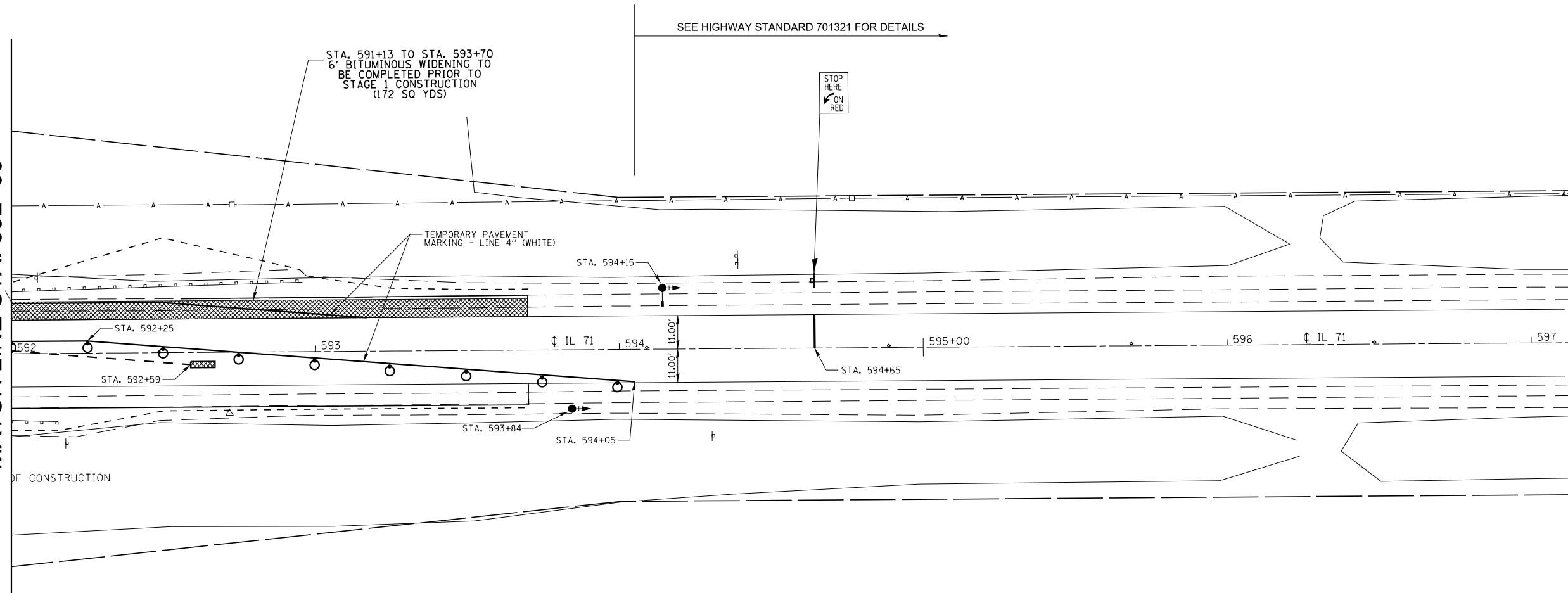
- WORK AREA
- IMPACT ATTENUATOR
- TEMPORARY CONCRETE BARRIER
- DRUM WITH STEADY BURNING BI-DIRECTIONAL LIGHT
- TRAFFIC SIGNAL WITH SIGNAL DIRECTION INDICATED, BACK PLATE AND MICROWAVE DETECTOR
- SIGN
- TYPE III BARRICADE

NOTES

1. SEE HIGHWAY STANDARD 701321 AND 704001 FOR ADDITIONAL TRAFFIC CONTROL INFORMATION.
2. TEMPORARY BRIDGE TRAFFIC SIGNALS, CONCRETE BARRIER, AND IMPACT ATTENUATORS WILL BE PAID FOR SEPARATELY.
3. TYPE III BARRICADES TO BE PLACED WHEN NO WORK IS BEING PERFORMED.

FILE NAME =	USER NAME = pletschr	DESIGNED -	REVISED -	STATE OF ILLINOIS DEPARTMENT OF TRANSPORTATION	TRAFFIC CONTROL - STAGE 1			F.A.P. RTE.	SECTION	COUNTY	TOTAL SHEETS	SHEET NO.
et:\pw\work\p1dot\pletschr\0249716\0366813-sht-staging.dgn	PLOT SCALE = 40.0000' / in.	DRAWN -	REVISED -		311	(4)BR-1	LASALLE	38	14			
\$MODELNAME\$	PLOT DATE = 8/2/2013	CHECKED -	REVISED -		SCALE: SHEET OF SHEETS STA. 587+00 TO STA. 592+00			CONTRACT NO. 66B13				
		DATE -	REVISED -		ILLINOIS FED. AID PROJECT							

MATCH LINE STA. 592+00



LEGEND

- WORK AREA
- IMPACT ATTENUATOR
- TEMPORARY CONCRETE BARRIER
- DRUM WITH STEADY BURNING BI-DIRECTIONAL LIGHT
- TRAFFIC SIGNAL WITH SIGNAL DIRECTION INDICATED, BACK PLATE AND MICROWAVE DETECTOR
- SIGN
- TYPE III BARRICADE

NOTES

1. SEE HIGHWAY STANDARD 701321 AND 704001 FOR ADDITIONAL TRAFFIC CONTROL INFORMATION.
2. TEMPORARY BRIDGE TRAFFIC SIGNALS, CONCRETE BARRIER, AND IMPACT ATTENUATORS WILL BE PAID FOR SEPARATELY.
3. TYPE III BARRICADES TO BE PLACED WHEN NO WORK IS BEING PERFORMED.

FILE NAME =	USER NAME = pletschtr	DESIGNED -	REVISED -
et:\pw\work\p1dot\pletschtr\d0249716\0366813-sht-staging.dgn		DRAWN -	REVISED -
\$MODELNAME\$	PLOT SCALE = 40.0000' / in.	CHECKED -	REVISED -
	PLOT DATE = 8/2/2013	DATE -	REVISED -

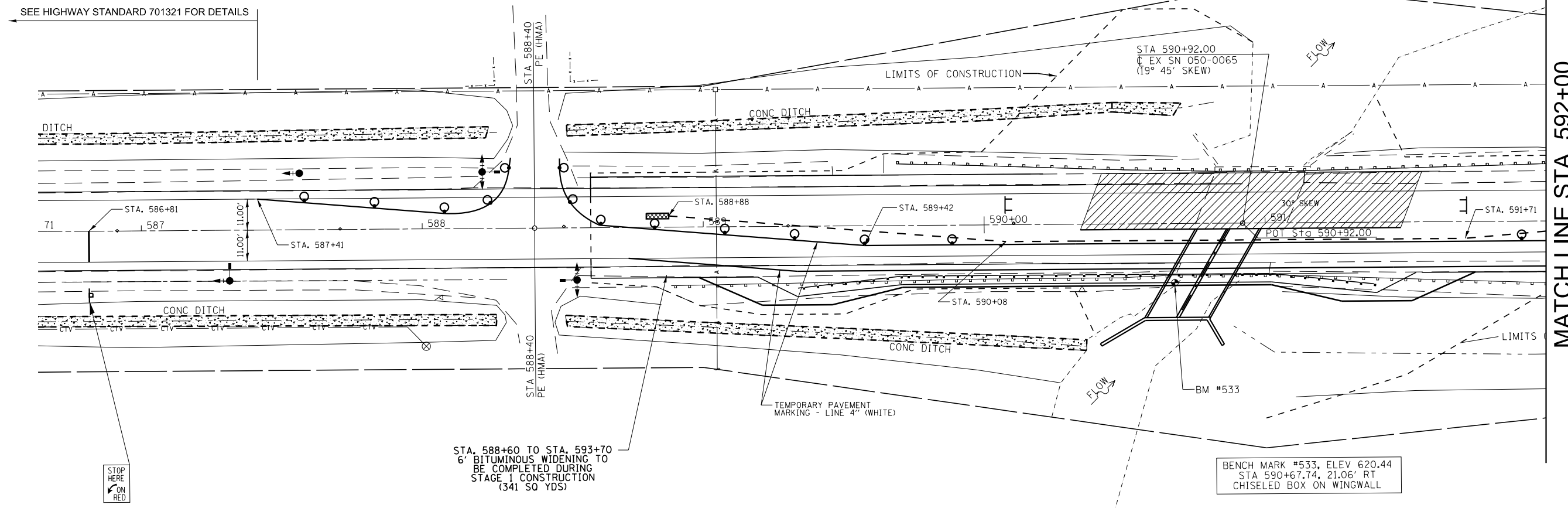
**STATE OF ILLINOIS
DEPARTMENT OF TRANSPORTATION**

TRAFFIC CONTROL - STAGE 1

SCALE: SHEET OF SHEETS STA. 592+00 TO STA. 597+00

F.A.P. RTE.	SECTION	COUNTY	TOTAL SHEETS	SHEET NO.
311	(4)BR-1	LASALLE	38	15
CONTRACT NO. 66B13				
ILLINOIS FED. AID PROJECT				

SEE HIGHWAY STANDARD 701321 FOR DETAILS



MATCH LINE STA. 592+00

LEGEND

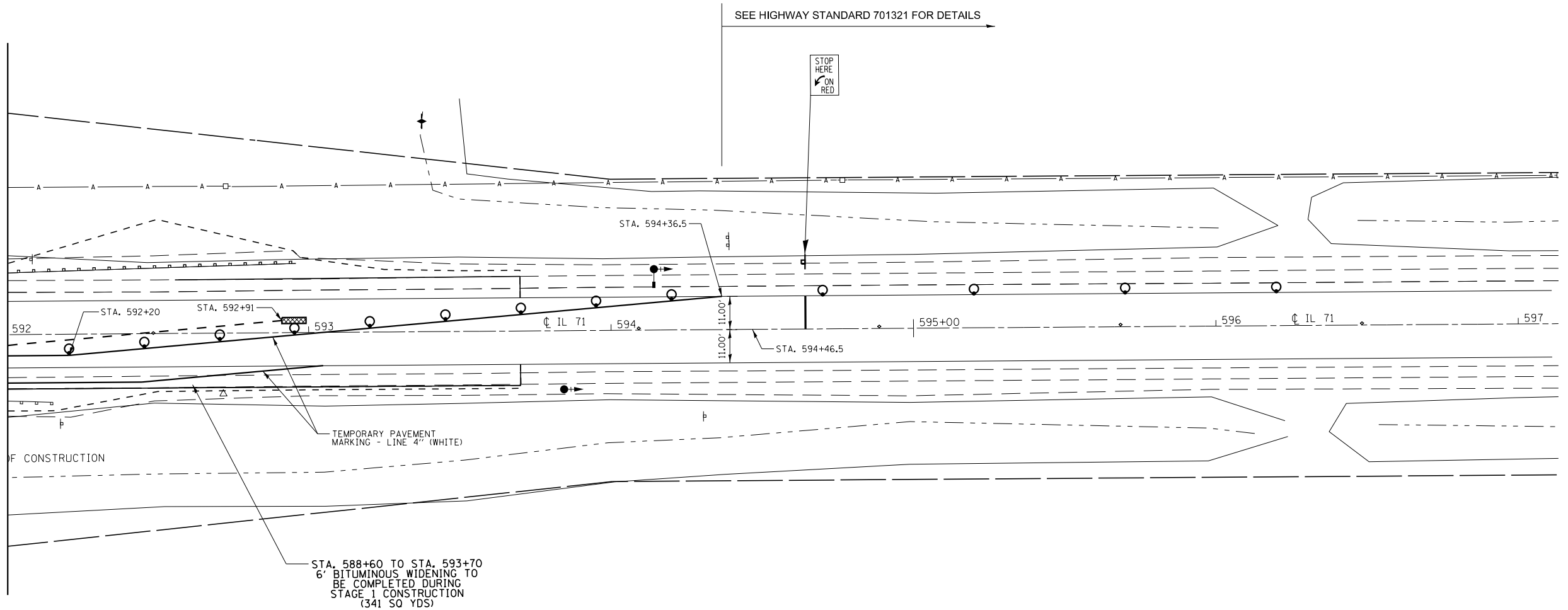
- WORK AREA
- IMPACT ATTENUATOR
- TEMPORARY CONCRETE BARRIER
- DRUM WITH STEADY BURNING BI-DIRECTIONAL LIGHT
- TRAFFIC SIGNAL WITH SIGNAL DIRECTION INDICATED, BACK PLATE AND MICROWAVE DETECTOR
- SIGN
- TYPE III BARRACADE

NOTES

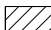




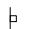
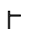
1. SEE HIGHWAY STANDARD 701321 AND 704001 FOR ADDITIONAL TRAFFIC CONTROL INFORMATION.
2. TEMPORARY BRIDGE TRAFFIC SIGNALS, CONCRETE BARRIER, AND IMPACT ATTENUATORS WILL BE PAID FOR SEPARATELY.
3. TYPE III BARRACADES TO BE PLACED WHEN NO WORK IS BEING PERFORMED.

FILE NAME =	USER NAME = pletschr	DESIGNED -	REVISED -	STATE OF ILLINOIS DEPARTMENT OF TRANSPORTATION	TRAFFIC CONTROL - STAGE 2	F.A.P. RTE.	SECTION	COUNTY	TOTAL SHEETS	SHEET NO.	
et:\pw\work\p\dot\pletschr\d0249716\036813-sht-staging.dgn	PLOT SCALE = 40.0000' / in.	DRAWN -	REVISED -			311	(4)BR-1	LASALLE	38	16	
\$MODELNAME\$	PLOT DATE = 8/2/2013	CHECKED -	REVISED -			CONTRACT NO. 66B13					
		DATE -	REVISED -			SCALE:	SHEET OF SHEETS	STA. 587+00 TO STA. 592+00	ILLINOIS FED. AID PROJECT		

MATCH LINE STA. 592+00



LEGEND

-  WORK AREA
-  IMPACT ATTENUATOR
-  TEMPORARY CONCRETE BARRIER
-  DRUM WITH STEADY BURNING BI-DIRECTIONAL LIGHT
-  TRAFFIC SIGNAL WITH SIGNAL DIRECTION INDICATED, BACK PLATE AND MICROWAVE DETECTOR
-  SIGN
-  TYPE III BARRICADE

NOTES

1. SEE HIGHWAY STANDARD 701321 AND 704001 FOR ADDITIONAL TRAFFIC CONTROL INFORMATION.
2. TEMPORARY BRIDGE TRAFFIC SIGNALS, CONCRETE BARRIER, AND IMPACT ATTENUATORS WILL BE PAID FOR SEPARATELY.
3. TYPE III BARRICADES TO BE PLACED WHEN NO WORK IS BEING PERFORMED.
4. KEEP STOP BARS AND TRAFFIC SIGNALS IN SAME LOCATION AS STAGE I

FILE NAME =	USER NAME = pletschr	DESIGNED -	REVISED -
et:\pw\work\p\idot\pletschr\d0249716\0366813-sht-staging.dgn		DRAWN -	REVISED -
	PLOT SCALE = 40.0000' / in.	CHECKED -	REVISED -
\$MODELNAME\$	PLOT DATE = 8/2/2013	DATE -	REVISED -

**STATE OF ILLINOIS
DEPARTMENT OF TRANSPORTATION**

TRAFFIC CONTROL - STAGE 2

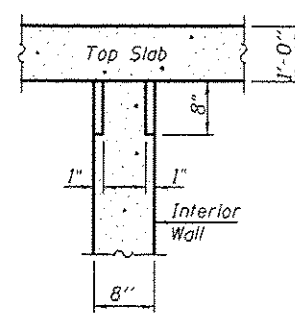
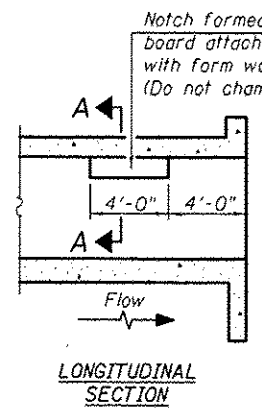
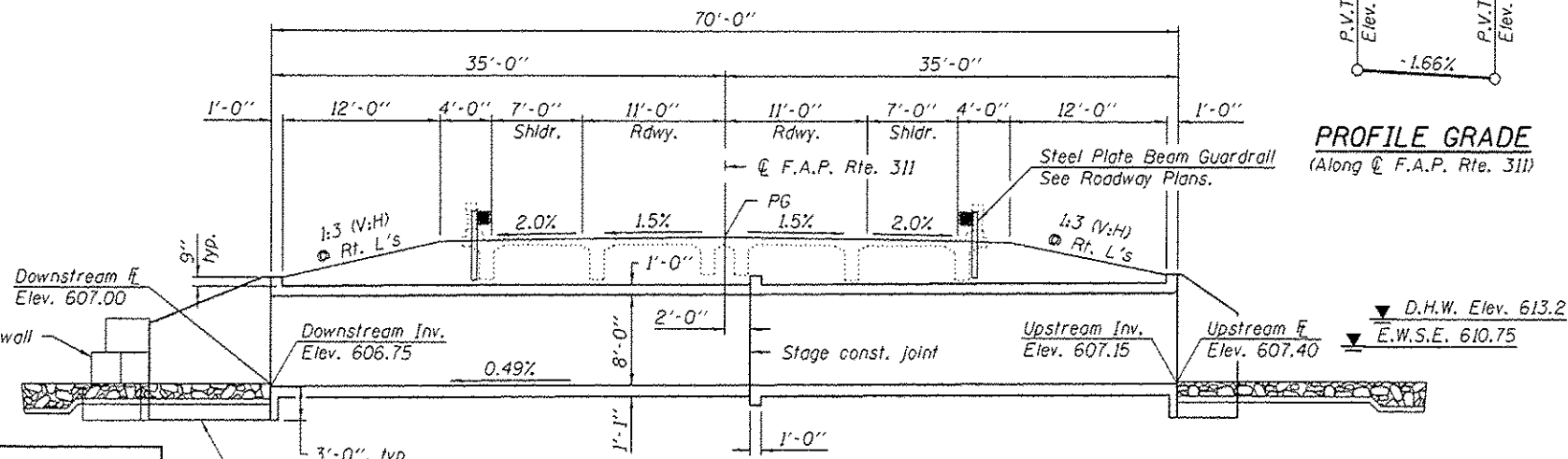
SCALE: SHEET OF SHEETS STA. 592+00 TO STA. 597+00

F.A.P. RTE.	SECTION	COUNTY	TOTAL SHEETS	SHEET NO.
311	(4)BR-1	LASALLE	38	17
CONTRACT NO. 66B13				
ILLINOIS FED. AID PROJECT				

Benchmark: Chiseled "□" on southeast wingwall of S.N. 050-0065; Sta. 590+67.74, 21.06' Rt., Elev. 620.44

Existing Structure: S.N. 050-0065 built in 1947 as F.A. Route 97, Section 4B, at Sta. 590+92. The existing structure consists of a single span reinforced concrete T-girder superstructure supported on closed abutments with untreated timber piles, 34'-0" back-to-back abutments and 40'-4" out-to-out deck. The existing structure is to be removed and replaced. Traffic is to be maintained using stage construction.

No salvage.



GENERAL NOTES
 Reinforcement bars designated (E) shall be epoxy coated.
 Layout of slope protection system may be varied in the field to suit ground conditions as directed by the Engineer.
 Precast alternate not allowed.
 Excavation behind existing abutment walls shall be performed to balance front and back soil pressure before removing the existing superstructure. The Contractor shall sawcut the upper portion of the existing abutment at the stage removal line before Stage I removal to ensure the remaining portion will not be prematurely damaged.

TOTAL BILL OF MATERIAL

ITEM	UNIT	TOTAL
Stone Riprap, Class A4	Sq. Yd.	210
Filter Fabric	Sq. Yd.	210
Gabions	Cu. Yd.	17
Removal of Existing Structures	Each	1
Reinforcement Bars, Epoxy Coated	Pound	40,590
Bar Splicers	Each	120
Name Plates	Each	1
Concrete Box Culverts	Cu. Yd.	203.6
Geotextile Retaining Wall	Sq. Ft.	78
Temporary Soil Retention System	Sq. Ft.	335

PHOEBE NESTING SITE DETAILS
 (Downstream End Only)

WATERWAY INFORMATION

Existing Low Grade Elev. 616.33 @ Sta. 597+00
 Proposed Low Grade Elev. 616.33 @ Sta. 597+00
 Drainage Area = 1.78 sq. mi.

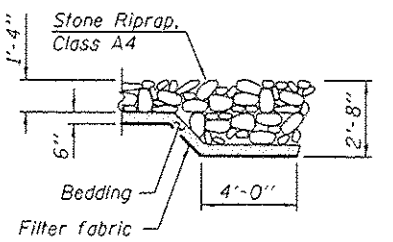
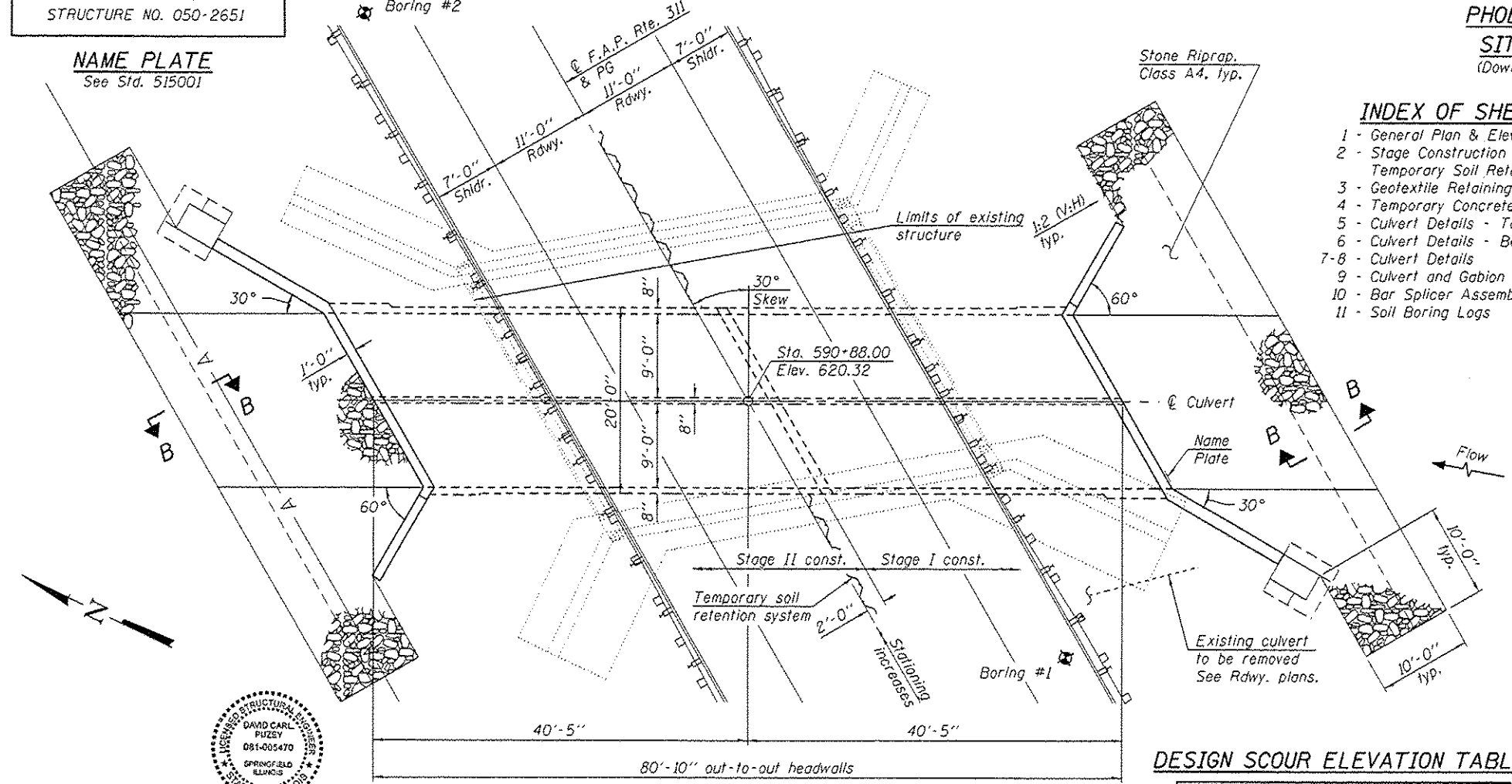
Flood	Freq. Yr.	Q C.F.S.	Opening Sq. Ft.		Nat. H.W.E.	Head - Ft.		Headwater El.	
			Exist.	Prop.		Exist.	Prop.	Exist.	Prop.
10	10	361	128	86	612.2	0.0	0.0	612.2	612.2
Design	50	564	158	105	613.2	0.0	0.0	613.2	613.2
Base	100	647	169	111	613.6	0.0	0.2	613.6	613.7
Overtopping	-	-	-	-	-	-	-	-	-
Max. Calc.	500	851	193	126	614.4	0.2	0.7	614.6	615.1

Existing 10-year velocity = 2.8 ft./sec.
 Proposed 10-year velocity = 4.2 ft. / sec.

- INDEX OF SHEETS**
- 1 - General Plan & Elevation
 - 2 - Stage Construction Details and Temporary Soil Retention System
 - 3 - Geotextile Retaining Wall
 - 4 - Temporary Concrete Barrier
 - 5 - Culvert Details - Top Slab
 - 6 - Culvert Details - Bottom Slab
 - 7-8 - Culvert Details
 - 9 - Culvert and Gabion Wall Details
 - 10 - Bar Splicer Assembly Details
 - 11 - Soil Boring Logs

STATION 590+88.00
 BUILT 201 BY
 STATE OF ILLINOIS
 F.A.P. RTE 311 - SEC. (4)BR-1
 LOADING HL-93
 STRUCTURE NO. 050-2651

NAME PLATE
 See Std. 515001



DESIGN STRESSES
 FIELD UNITS
 f'c = 3,500 psi
 fy = 60,000 psi (Reinforcement)

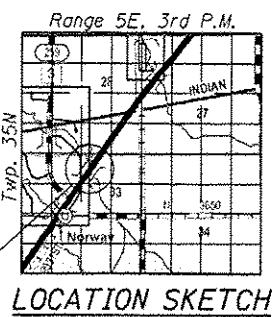
DESIGN SPECIFICATIONS
 2012 AASHTO LRFD Bridge Design Specifications, 6th Edition

LOADING HL-93
 Allow 50#/sq. ft. for future wearing surface.

GENERAL PLAN & ELEVATION
 ILLINOIS ROUTE 71 OVER
 TRIBUTARY TO FOX RIVER
 F.A.P. RTE. 311 - SEC. (4)BR-1
 LASALLE COUNTY
 STATION 590+88.00
 STRUCTURE NO. 050-2651

DESIGN SCOUR ELEVATION TABLE

Design Scour Elevation (ft.)	Upstream	Downstream
	604.15	603.75



EXPIRES 11-30-2014

PLAN

DESIGNED	EXAMINED	DATE
CHECKED	PASSED	10/1/2013
DRAWN		
CHECKED		

STATE OF ILLINOIS
 DEPARTMENT OF TRANSPORTATION

F.A.P. RTE.	SECTION	COUNTY	TOTAL SHEETS	SHEET NO.
311	(4)BR-1	LASALLE	38	18

CONTRACT NO. 66B13
 SHEET NO. 1 OF 11 SHEETS
 ILLINOIS FED. AID PROJECT

THIS SHEET TO BE INSERTED BY BRIDGE OFFICE

SHEET 19 OF 38

FILE NAME =	USER NAME = pletschr	DESIGNED -	REVISED -	STATE OF ILLINOIS DEPARTMENT OF TRANSPORTATION		F.A. RTE.	SECTION	COUNTY	TOTAL SHEETS	SHEET NO.	
ct:\pw\work\pwidot\pletschr\d0249716\0368813-sht-details.DGN		DRAWN -	REVISED -								
MODELNAME		CHECKED -	REVISED -								
	PLOT DATE = 8/2/2013	DATE -	REVISED -			SCALE:	SHEET OF SHEETS	STA. TO STA.	ILLINOIS FED. AID PROJECT		

THIS SHEET TO BE INSERTED BY BRIDGE OFFICE

SHEET 20 OF 38

FILE NAME =	USER NAME = pletschr	DESIGNED -	REVISED -	STATE OF ILLINOIS DEPARTMENT OF TRANSPORTATION		F.A. RTE.	SECTION	COUNTY	TOTAL SHEETS	SHEET NO.	
et:\pw\work\p\idot\pletschr\d0249716\0368813-sht-details.DGN		DRAWN -	REVISED -								
MODELNAME		CHECKED -	REVISED -								
	PLOT DATE = 8/2/2013	DATE -	REVISED -			SCALE:	SHEET OF SHEETS	STA.	TO STA.	CONTRACT NO.	
ILLINOIS FED. AID PROJECT											

THIS SHEET TO BE INSERTED BY BRIDGE OFFICE

SHEET 21 OF 38

FILE NAME =	USER NAME = pletschr	DESIGNED -	REVISED -	STATE OF ILLINOIS DEPARTMENT OF TRANSPORTATION		F.A. RTE.	SECTION	COUNTY	TOTAL SHEETS	SHEET NO.	
ct:\pw\work\p\idot\pletschr\d0249716\0368813-sht-details.DGN		DRAWN -	REVISED -								
MODELNAME		CHECKED -	REVISED -								
	PLOT DATE = 8/2/2013	DATE -	REVISED -			SCALE:	SHEET OF SHEETS	STA.	TO STA.	CONTRACT NO.	
ILLINOIS FED. AID PROJECT											

THIS SHEET TO BE INSERTED BY BRIDGE OFFICE

SHEET 22 OF 38

FILE NAME =	USER NAME = pletschr	DESIGNED -	REVISED -	STATE OF ILLINOIS DEPARTMENT OF TRANSPORTATION		F.A. RTÉ.	SECTION	COUNTY	TOTAL SHEETS	SHEET NO.	
c:\pw\work\p\idot\pletschr\d0249716\0368813-sht-details.DGN	PLOT SCALE = 100.0000' / in.	DRAWN -	REVISED -								
MODELNAME	PLOT DATE = 8/2/2013	CHECKED -	REVISED -								
		DATE -	REVISED -			SCALE:	SHEET	OF	SHEETS	STA.	TO
						ILLINOIS FED. AID PROJECT					
						CONTRACT NO.					

THIS SHEET TO BE INSERTED BY BRIDGE OFFICE

SHEET 23 OF 38

FILE NAME =	USER NAME = pletschr	DESIGNED -	REVISED -	STATE OF ILLINOIS DEPARTMENT OF TRANSPORTATION		F.A. RTE.	SECTION	COUNTY	TOTAL SHEETS	SHEET NO.		
c:\pw\work\p\idot\pletschr\d0249716\0368813-sht-details.DGN	PLOT SCALE = 100.0000' / in.	DRAWN -	REVISED -									
MODELNAME	PLOT DATE = 8/2/2013	CHECKED -	REVISED -			SCALE:	SHEET OF SHEETS	STA.	TO STA.	CONTRACT NO.		
		DATE -	REVISED -							ILLINOIS FED. AID PROJECT		

THIS SHEET TO BE INSERTED BY BRIDGE OFFICE

SHEET 24 OF 38

FILE NAME =	USER NAME = pletschr	DESIGNED -	REVISED -	STATE OF ILLINOIS DEPARTMENT OF TRANSPORTATION		F.A. RTE.	SECTION	COUNTY	TOTAL SHEETS	SHEET NO.	
ct:\pw\work\pwidot\pletschr\d0249716\0368813-sht-details.DGN		DRAWN -	REVISED -								
MODELNAME	PLOT SCALE = 100.0000' / in.	CHECKED -	REVISED -								
	PLOT DATE = 8/2/2013	DATE -	REVISED -			SCALE:	SHEET OF SHEETS	STA. TO STA.	CONTRACT NO.		
						ILLINOIS FED. AID PROJECT					

THIS SHEET TO BE INSERTED BY BRIDGE OFFICE

SHEET 25 OF 38

FILE NAME =	USER NAME = pletschr	DESIGNED -	REVISED -	STATE OF ILLINOIS DEPARTMENT OF TRANSPORTATION		F.A. RTE.	SECTION	COUNTY	TOTAL SHEETS	SHEET NO.	
et:\pw\work\p\idot\pletschr\d0249716\0368813-sht-details.DGN		DRAWN -	REVISED -								
MODELNAME		CHECKED -	REVISED -								
	PLOT DATE = 8/2/2013	DATE -	REVISED -			SCALE:	SHEET OF SHEETS	STA.	TO STA.	CONTRACT NO.	
ILLINOIS FED. AID PROJECT											

THIS SHEET TO BE INSERTED BY BRIDGE OFFICE

SHEET 26 OF 38

FILE NAME =	USER NAME = pletschr	DESIGNED -	REVISED -	STATE OF ILLINOIS DEPARTMENT OF TRANSPORTATION		F.A. RTE.	SECTION	COUNTY	TOTAL SHEETS	SHEET NO.	
et:\pw\work\p\idot\pletschr\d0249716\0368813-sht-details.DGN		DRAWN -	REVISED -								
MODELNAME	PLOT SCALE = 100.0000' / in.	CHECKED -	REVISED -								
	PLOT DATE = 8/2/2013	DATE -	REVISED -			SCALE:	SHEET OF SHEETS	STA. TO STA.	CONTRACT NO.		
						ILLINOIS FED. AID PROJECT					

THIS SHEET TO BE INSERTED BY BRIDGE OFFICE

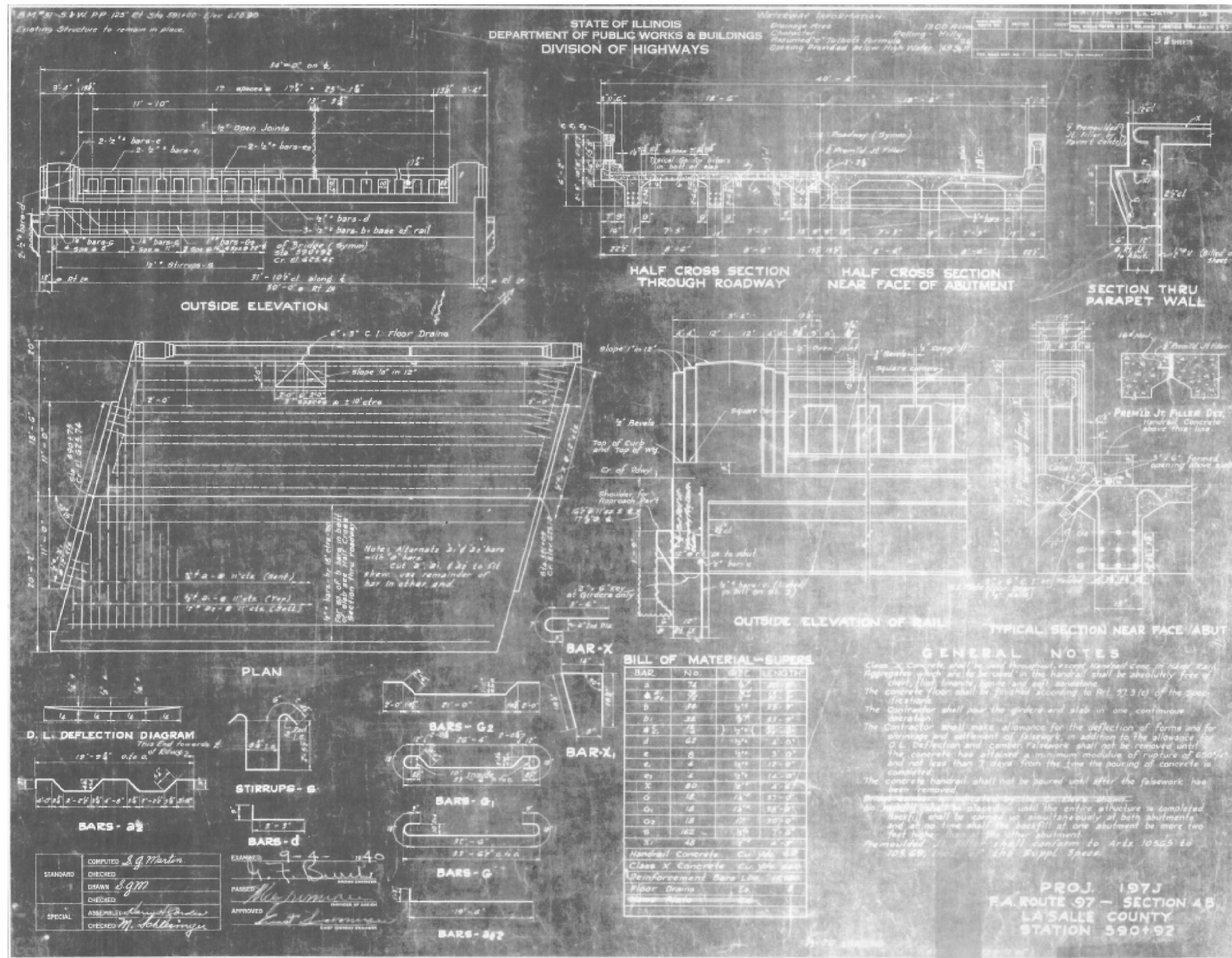
SHEET 27 OF 38

FILE NAME =	USER NAME = pletschr	DESIGNED -	REVISED -	STATE OF ILLINOIS DEPARTMENT OF TRANSPORTATION		F.A. RTE.	SECTION	COUNTY	TOTAL SHEETS	SHEET NO.	
et:\pw\work\p\idot\pletschr\d0249716\0368813-sht-details.DGN		DRAWN -	REVISED -								
MODELNAME	PLOT SCALE = 100.0000' / in.	CHECKED -	REVISED -								
	PLOT DATE = 8/2/2013	DATE -	REVISED -			SCALE:	SHEET OF SHEETS	STA. TO STA.	CONTRACT NO.		
						ILLINOIS FED. AID PROJECT					

THIS SHEET TO BE INSERTED BY BRIDGE OFFICE

SHEET 28 OF 38

FILE NAME =	USER NAME = pletschr	DESIGNED -	REVISED -	STATE OF ILLINOIS DEPARTMENT OF TRANSPORTATION		F.A. RTE.	SECTION	COUNTY	TOTAL SHEETS	SHEET NO.	
ct:\pw\work\p\idot\pletschr\d0249716\0368813-sht-details.DGN		DRAWN -	REVISED -								
MODELNAME		CHECKED -	REVISED -								
	PLOT DATE = 8/2/2013	DATE -	REVISED -			SCALE:	SHEET OF SHEETS	STA.	TO STA.	CONTRACT NO.	
ILLINOIS FED. AID PROJECT											



FILE NAME =	USER NAME = pletschr	DESIGNED -	REVISED -
et:\pw_work\p1dot\pletschr\0249716\038813-sht-details.DGN		DRAWN -	REVISED -
		CHECKED -	REVISED -
\$MODELNAME\$	PLOT DATE = 8/2/2013	DATE -	REVISED -

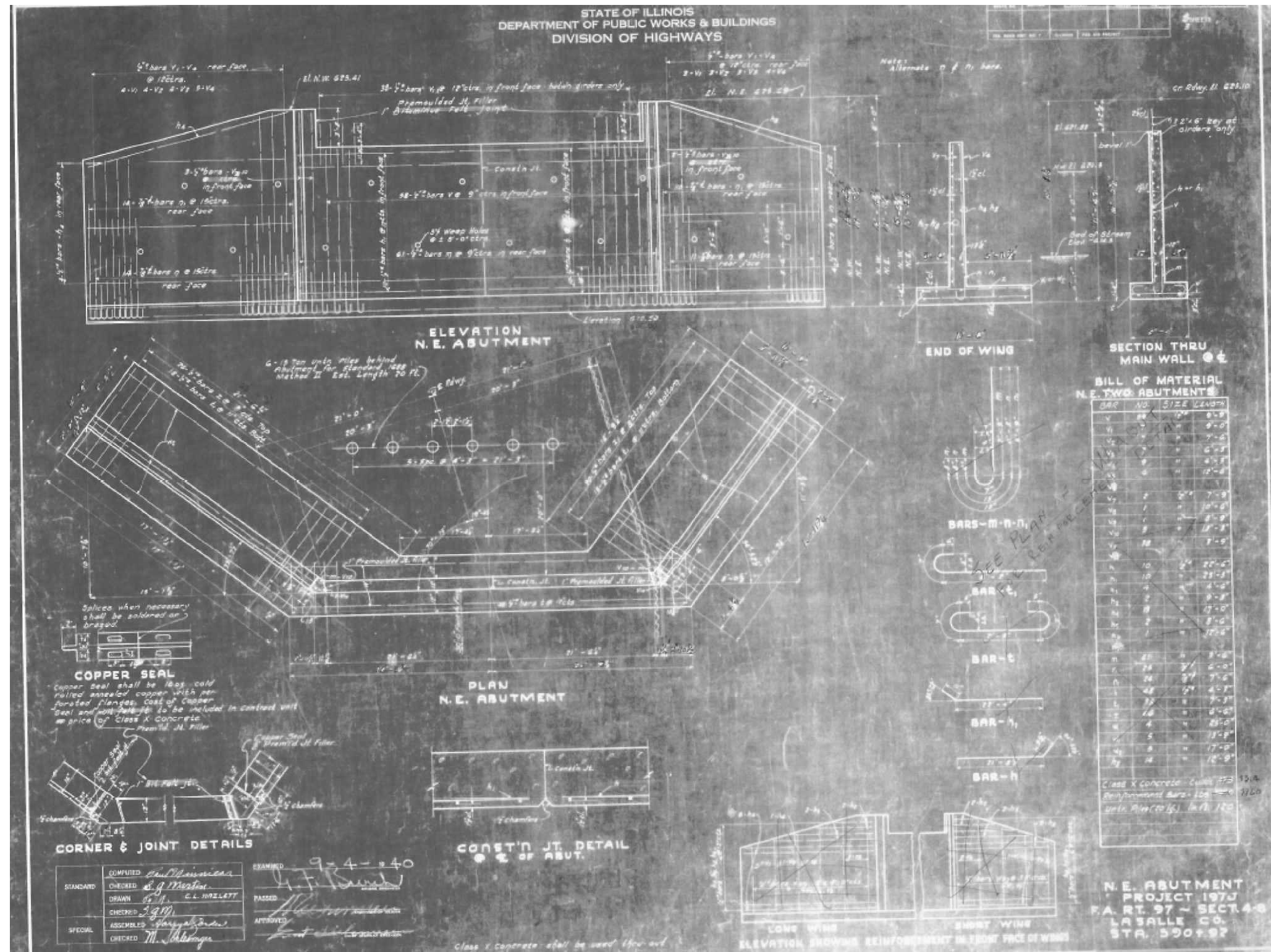
STATE OF ILLINOIS
DEPARTMENT OF TRANSPORTATION

EXISTING BRIDGE PLANS-FOR INFORMATION ONLY

SCALE: SHEET OF SHEETS STA. TO STA.

F.A.P. RTE.	SECTION	COUNTY	TOTAL SHEETS	SHEET NO.
311	(4)BR-1	LASALLE	38	29
CONTRACT NO. 66B13				
ILLINOIS FED. AID PROJECT				

STATE OF ILLINOIS
DEPARTMENT OF PUBLIC WORKS & BUILDINGS
DIVISION OF HIGHWAYS



FILE NAME =	USER NAME = pletschr	DESIGNED -	REVISED -
c:\pw_work\pwidot\pletschr\d0249716\0386813-sht-details.DGN		DRAWN -	REVISED -
		CHECKED -	REVISED -
\$MODELNAME\$	PLOT DATE = 8/2/2013	DATE -	REVISED -

STATE OF ILLINOIS
DEPARTMENT OF TRANSPORTATION

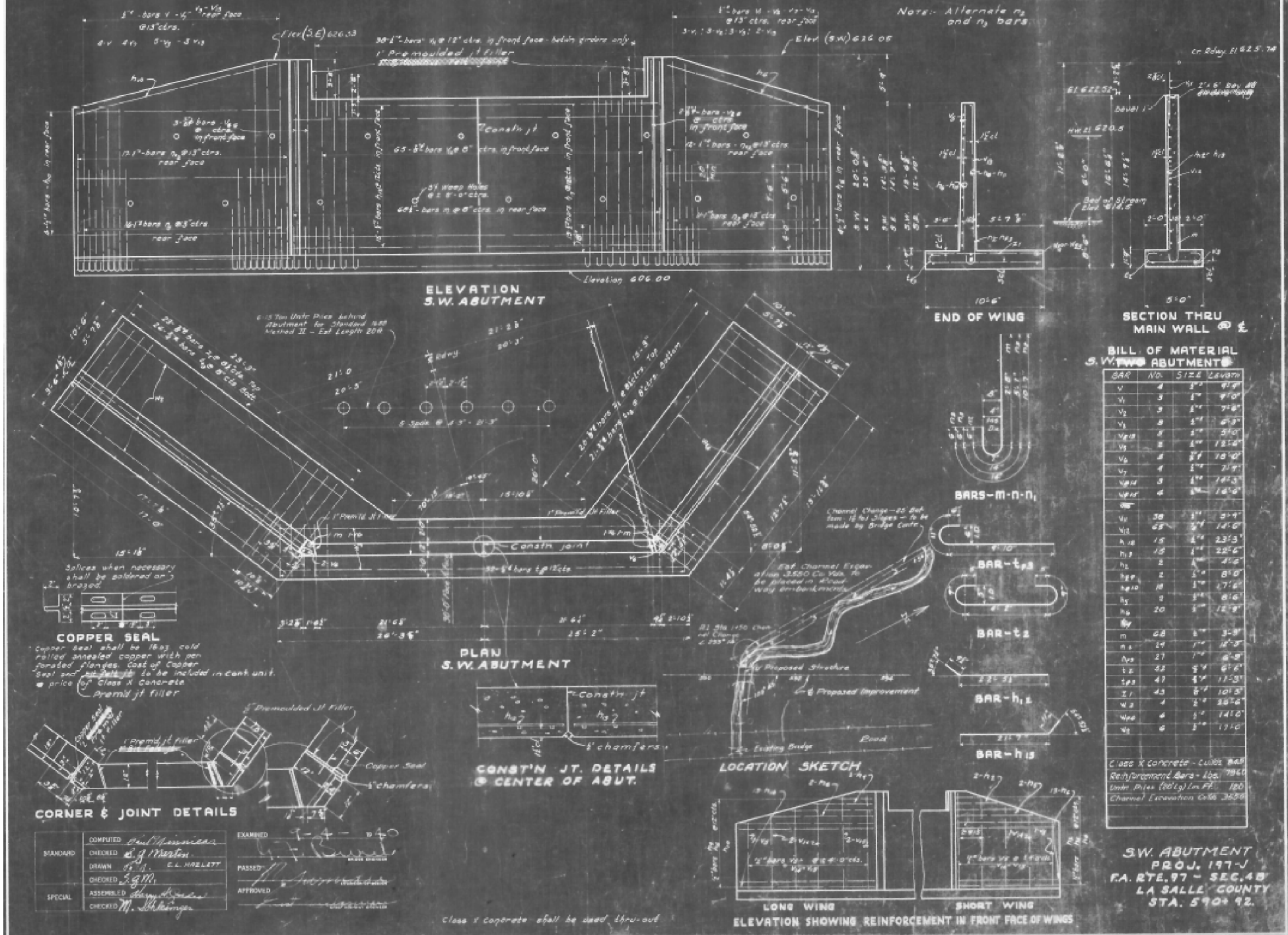
EXISTING BRIDGE PLANS-FOR INFORMATION ONLY

SCALE: SHEET OF SHEETS STA. TO STA.

F.A.P. RTE.	SECTION	COUNTY	TOTAL SHEETS	SHEET NO.
311	(4)BR-1	LASALLE	38	30
CONTRACT NO. 66B13				
ILLINOIS FED. AID PROJECT				

STATE OF ILLINOIS
DEPARTMENT OF PUBLIC WORKS & BUILDINGS
DIVISION OF HIGHWAYS

NO. 1	NO. 2	NO. 3	NO. 4	NO. 5	NO. 6	NO. 7	NO. 8	NO. 9	NO. 10



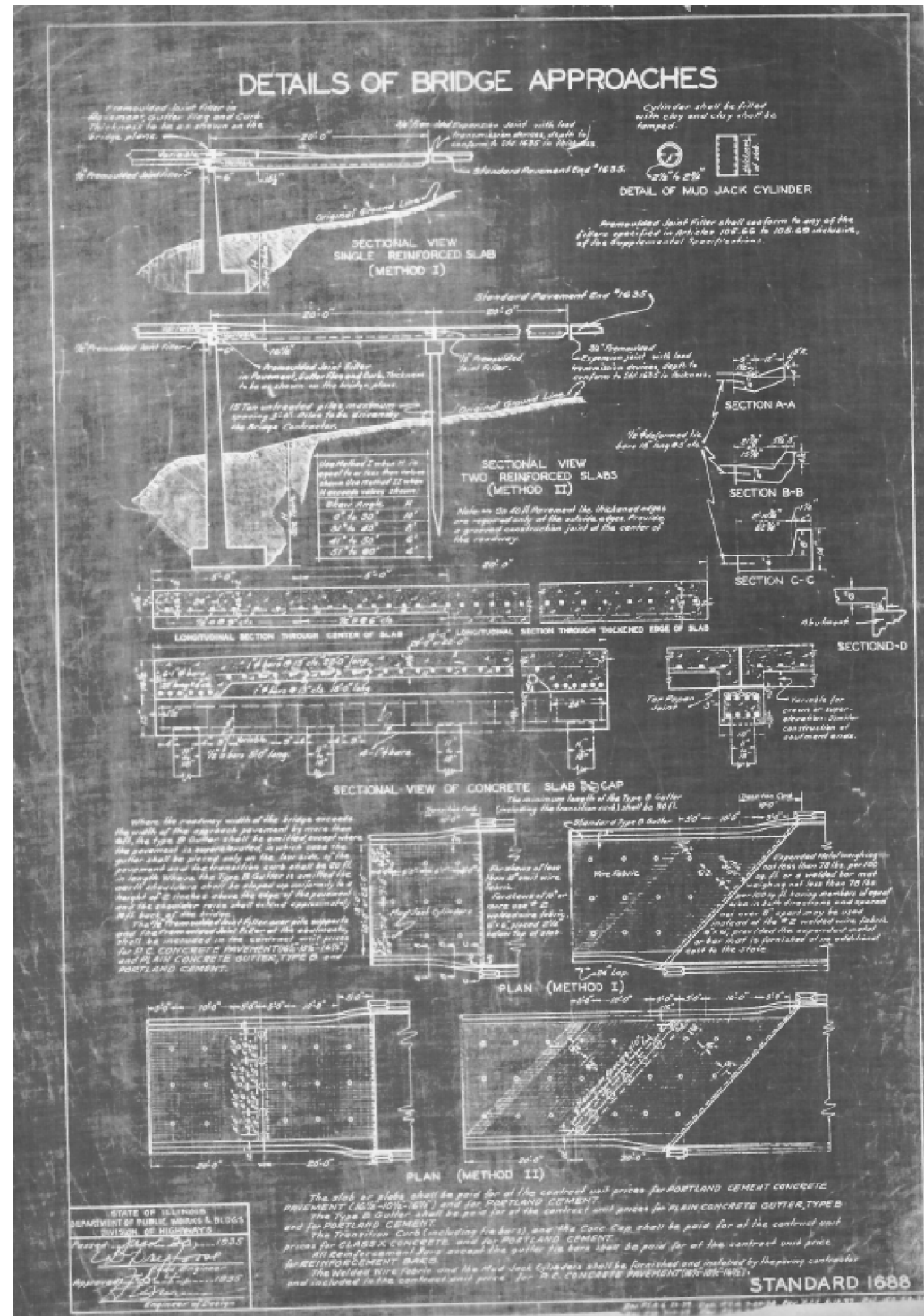
FILE NAME =	USER NAME = pletschr	DESIGNED -	REVISED -
et:\pw_work\pilot\pletschr\0249716\0386813-sht-details.DGN		DRAWN -	REVISED -
	PLOT SCALE = 100.0000' / in.	CHECKED -	REVISED -
\$MODELNAME\$	PLOT DATE = 8/2/2013	DATE -	REVISED -

STATE OF ILLINOIS
DEPARTMENT OF TRANSPORTATION

EXISTING BRIDGE PLANS-FOR INFORMATION ONLY

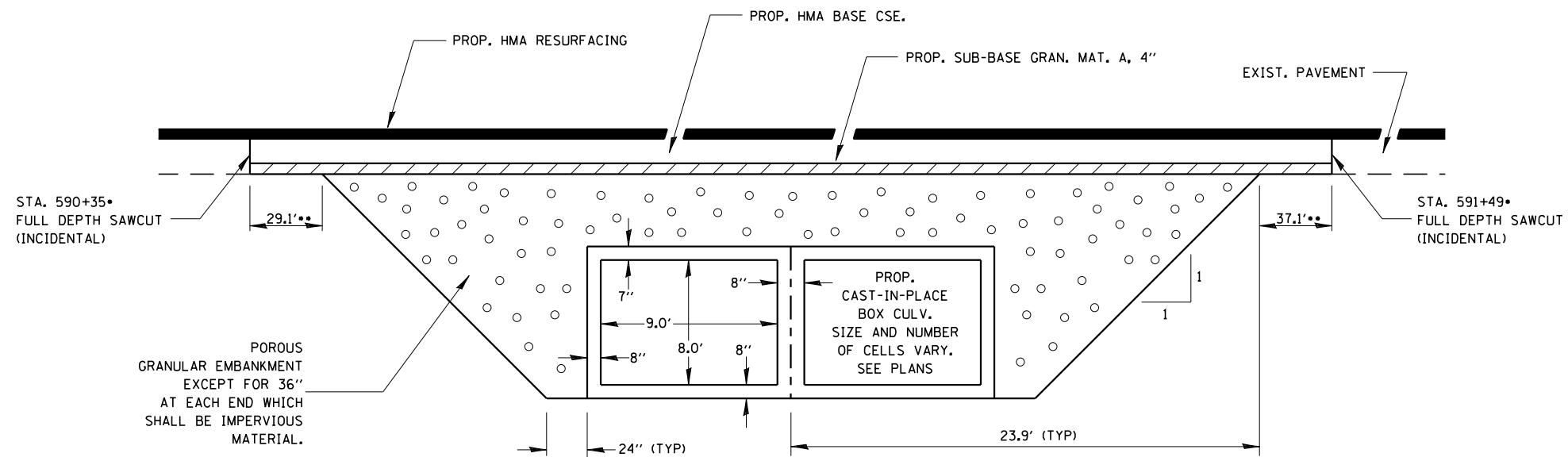
SCALE: SHEET OF SHEETS STA. TO STA.

F.A.P. RTE.	SECTION	COUNTY	TOTAL SHEETS	SHEET NO.
311	(4)BR-1	LASALLE	38	31
CONTRACT NO. 66B13				
ILLINOIS FED. AID PROJECT				



NOTE: ORIGINAL APPROACHES BUILT USING STANDARD 1688, METHOD II

FILE NAME =	USER NAME = pletschtr	DESIGNED -	REVISED -	STATE OF ILLINOIS DEPARTMENT OF TRANSPORTATION	EXISTING BRIDGE PLANS-FOR INFORMATION ONLY				F.A.P. RTE.	SECTION	COUNTY	TOTAL SHEETS	SHEET NO.
et:\pw_work\pwidot\pletschtr\0249716\036813-sht-details.DGN	PLOT SCALE = 100.0000' / in.	DRAWN -	REVISED -						311	(4)BR-1	LASALLE	38	32
\$MODELNAME\$	PLOT DATE = 8/2/2013	CHECKED -	REVISED -		CONTRACT NO. 66B13				ILLINOIS FED. AID PROJECT				
		DATE -	REVISED -		SCALE:	SHEET	OF	SHEETS	STA.	TO	STA.		



SECTION THROUGH CAST-IN-PLACE BOX CULVERT

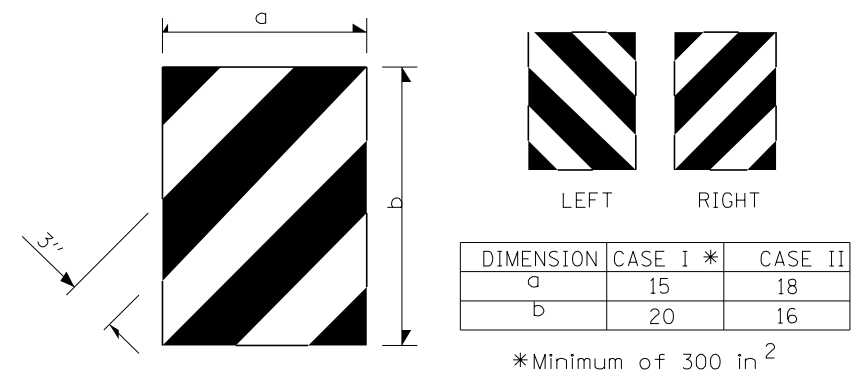
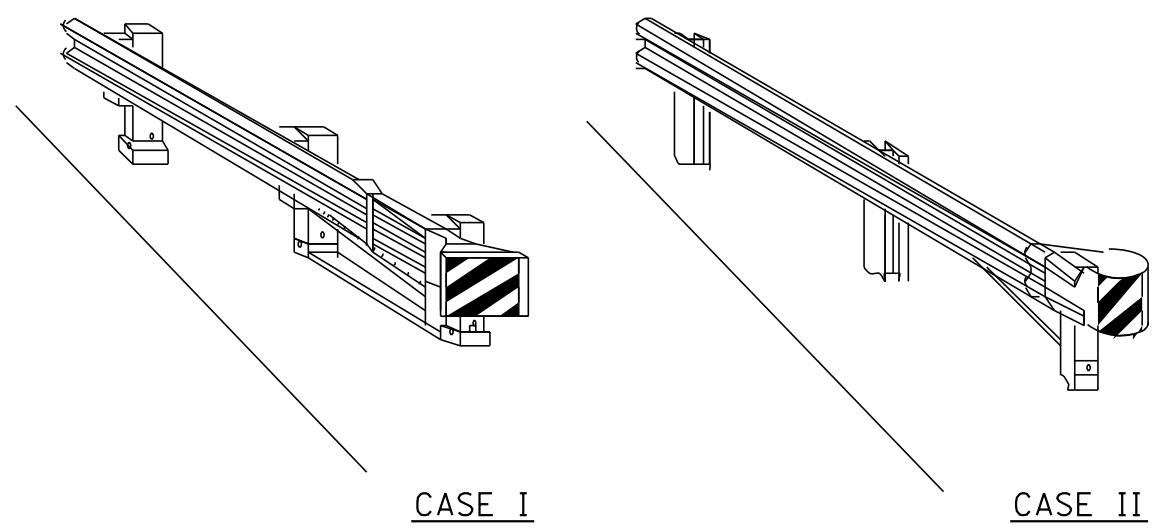
•NOTE: STATIONS ON ϕ
 ••NOTE: DISTANCES SHOWN MEASURED ON ϕ AND WILL VARY DUE TO SAWCUTS BEING CUT AT EXISTING STRUCTURE SKEW OF 19° 45'

FILE NAME =	USER NAME = pletschr	DESIGNED -	REVISED -
ct:\pw\work\p\dot\pletschr\d0249716\0366813-sht-details.DGN		DRAWN -	REVISED -
	PLOT SCALE = 100.0000' / in.	CHECKED -	REVISED -
	PLOT DATE = 8/2/2013	DATE -	REVISED -

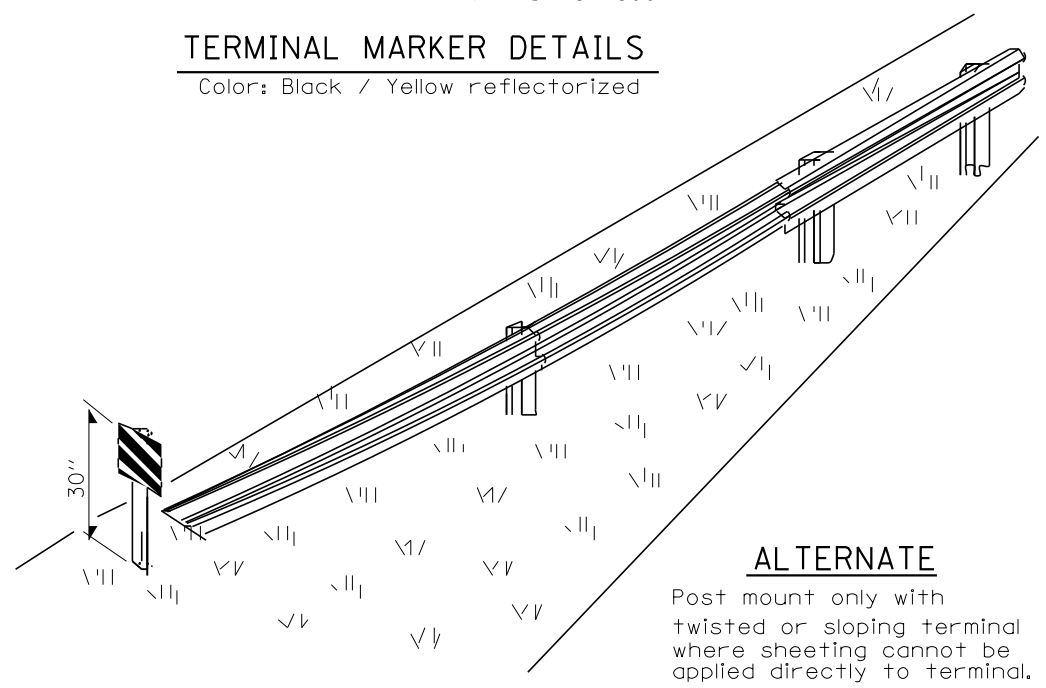
**STATE OF ILLINOIS
 DEPARTMENT OF TRANSPORTATION**

DETAILS			
SCALE:	SHEET NO.	OF SHEETS	STA. TO STA.

F.A.P. RTE.	SECTION	COUNTY	TOTAL SHEETS	SHEET NO.
311	(4)BR-1	LASALLE	38	33
CONTRACT NO. 66B13				
FED. ROAD DIST. NO.	ILLINOIS FED. AID PROJECT			

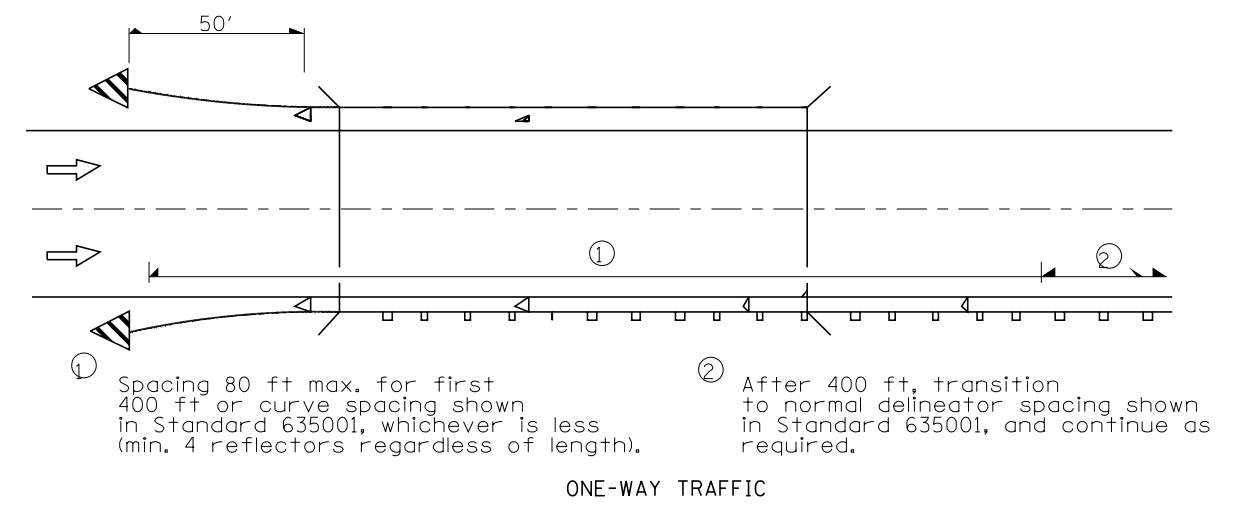


TERMINAL MARKER DETAILS
Color: Black / Yellow reflectorized

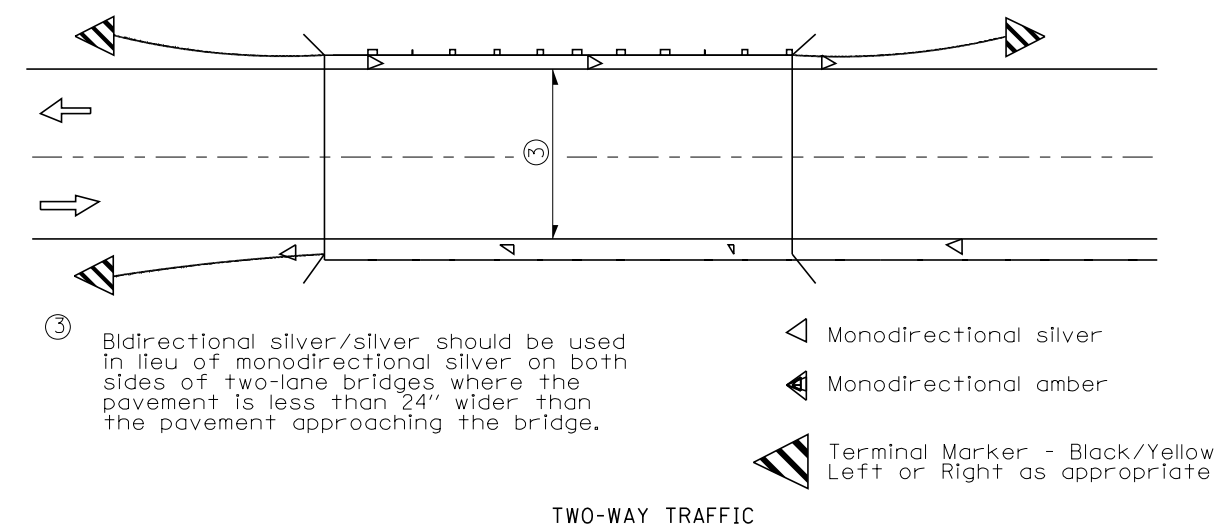


ALTERNATE

Post mount only with twisted or sloping terminal where sheeting cannot be applied directly to terminal.

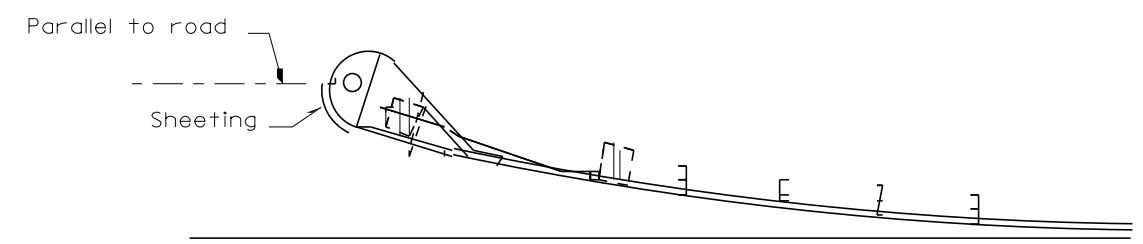


ONE-WAY TRAFFIC

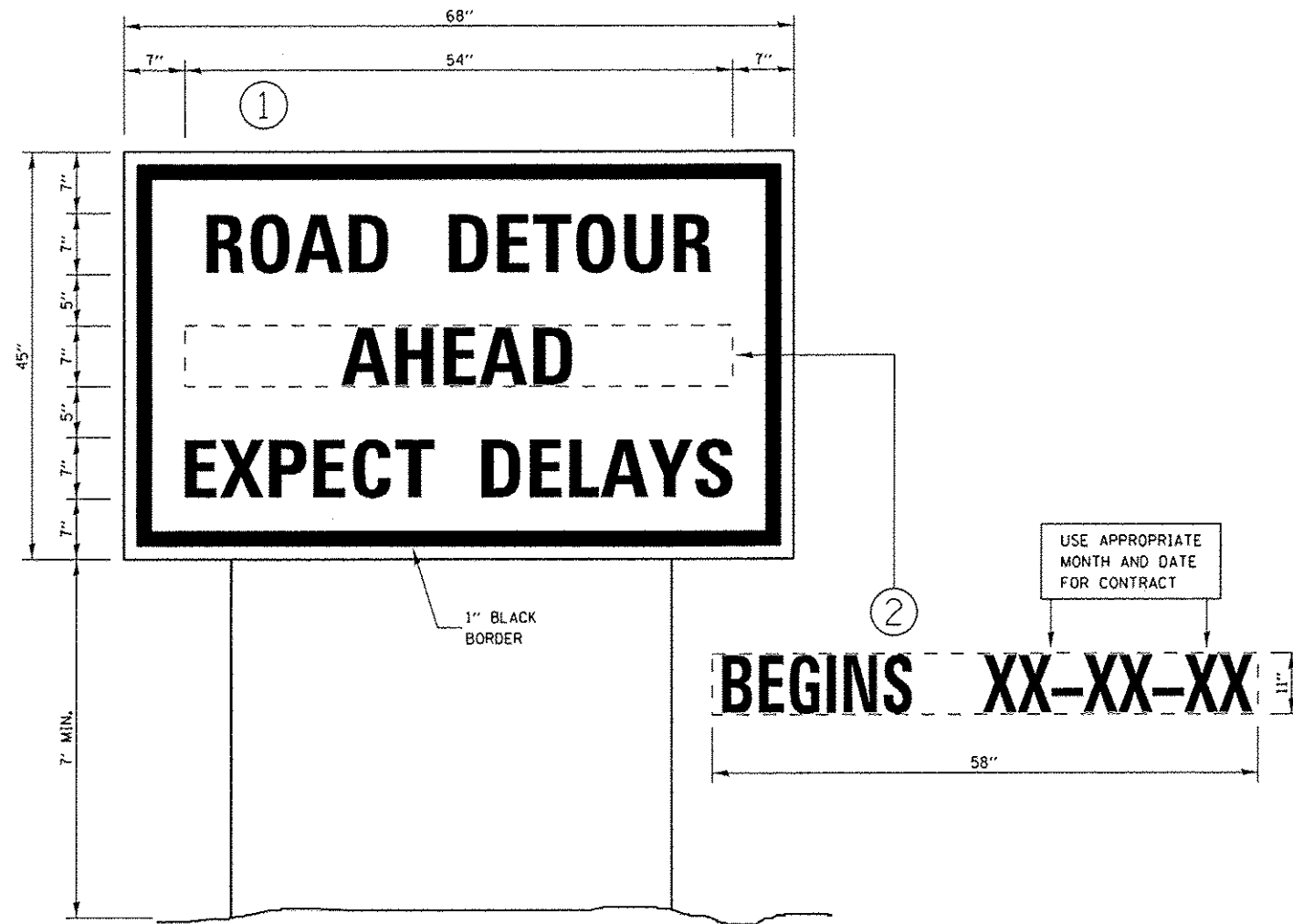


TWO-WAY TRAFFIC

GUARDRAIL / BARRIER WALL / BRIDGE RAIL REFLECTORS



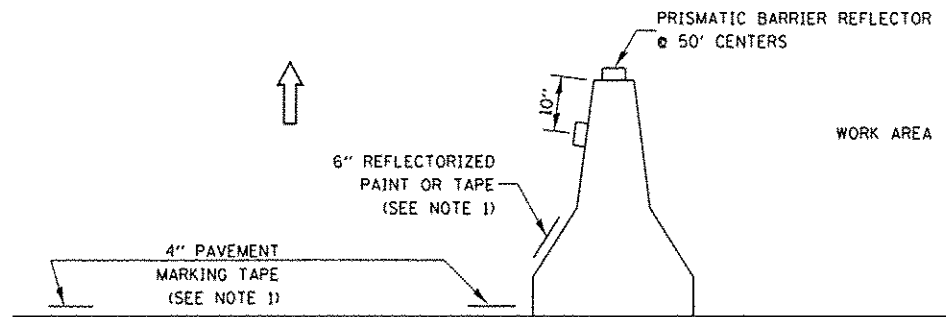
SHEETING POSITION: CASE II



TEMPORARY INFORMATION SIGN

NOTES:

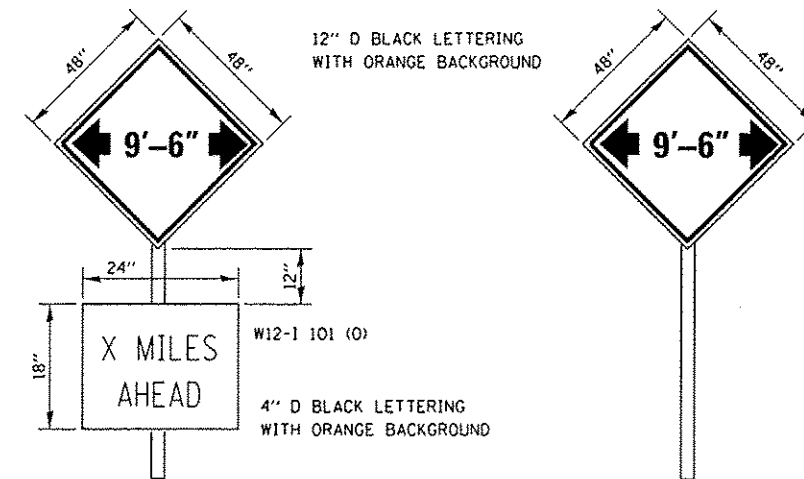
1. USE BLACK LETTERING ON ORANGE BACKGROUND.
2. ERECT SIGNS 500 FT. IN ADVANCE OF THE LOCATION FOR THE "ROAD CONSTRUCTION AHEAD" SIGN AT LOCATIONS AS DIRECTED BY THE ENGINEER.
3. ERECT SIGN ① WITH INSTALLED PANEL ② A MINIMUM OF ONE WEEK PRIOR TO THE START OF DETOUR.
4. REMOVE PANEL ② ON THAT DATE.
5. SEE SPECIAL PROVISION "TEMPORARY INFORMATION SIGN" FOR ADDITIONAL INFORMATION.
6. SHALL BE PAID FOR AT THE CONTRACT UNIT PRICE PER SQUARE FOOT FOR TEMPORARY INFORMATION SIGN. INSTALLED SIGN PANEL 2 SHALL NOT BE MEASURED SEPERATELY BUT SHALL BE CONSIDERED INCLUDED IN THE SQUARE FOOTAGE OF SIGN 1.



NOTES:

1. THE CONTRACTOR HAS THE OPTION OF USING EITHER THE LINE ON THE TEMPORARY CONCRETE BARRIER OR ON THE PAVEMENT.
2. MAY HAVE TO SLIGHTLY MOVE BARRIER DURING PAVING OPERATIONS. COST INCLUDED IN TEMPORARY CONCRETE BARRIER
3. THE COST OF THE REFLECTORS AND THE PAVEMENT MARKING LINES ARE INCLUDED IN THE COST OF THE TEMPORARY CONCRETE BARRIER.

TRAFFIC CONTROL DETAIL FOR TEMPORARY CONCRETE BARRIER



TO BE POST MOUNTED. TWO SIGNS REQUIRED, ONE IN THE WBL JUST SOUTH OF THE US 52 INTERSECTION, THE OTHER SIGN 1/2 MILE NORTH OF I-80 IN THE EBL

THE ENGINEER WILL NOTIFY DISTRICT 3 BUREAU OF OPERATIONS 14 CALENDAR DAYS PRIOR TO INSTALLING ANY TRAFFIC CONTROL DEVICES THAT WILL RESTRICT THE PAVEMENT WIDTH.

THE CONTRACTOR SHALL BE RESPONSIBLE FOR COORDINATING WITH THE ENGINEER TO MEET THIS REQUIREMENT.

COST OF SUPPLYING, INSTALLING, MAINTAINING AND REMOVING WIDTH RESTRICTION SIGNS SHALL BE INCLUDED IN THE COST OF THE TRAFFIC CONTROL AND PROTECTION PAY ITEMS.

WIDTH RESTRICTION SIGNING DETAILS

FILE NAME :	USER NAME :	DESIGNED :	REVISED :
c:\pwwork\pvidot\pletschr\0249716\030	pletschr		
	PROJECT :	DRAWN :	REVISED :
	6613-ahc-details.dgn		
	PLOT SCALE :	CHECKED :	REVISED :
	1/8" = 1'-0"		
#MODELNAME#	PLOT DATE :	DATE :	REVISED :
	8/2/2013		

**STATE OF ILLINOIS
DEPARTMENT OF TRANSPORTATION**

DETAILS

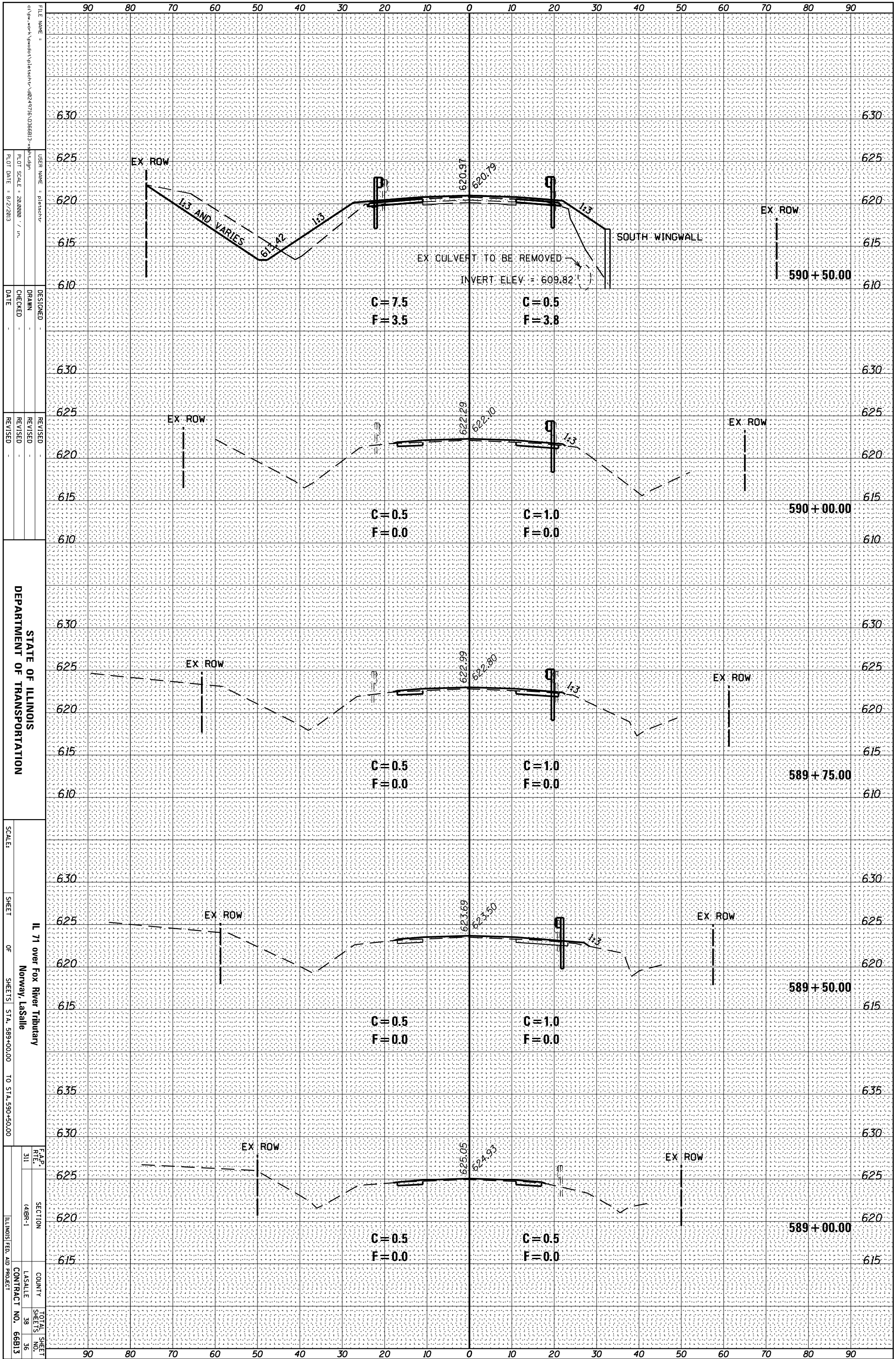
SCALE: SHEET OF SHEETS STA. TO STA.

F.A.P. RTE.	SECTION	COUNTY	TOTAL SHEETS	SHEET NO.
311	(4)BR-1	LASALLE	38	35
CONTRACT NO. 66B13			ILLINOIS FED. AID PROJECT	

Rev.

ORIGINAL SURVEY	SURVEYED	BY	DATE
NOTE BOOK	PLOTTED		
	TEMPLATE		
	AREAS		
	AREAS CHECKED		

FINAL SURVEY	SURVEYED	BY	DATE
NOTE BOOK	PLOTTED		
	TEMPLATE		
	AREAS		
	AREAS CHECKED		



STATE OF ILLINOIS
DEPARTMENT OF TRANSPORTATION

IL 71 over Fox River Tributary
Norway, LaSalle

SCALE: SHEET OF SHEETS STA. 589+00.00 TO STA. 590+50.00

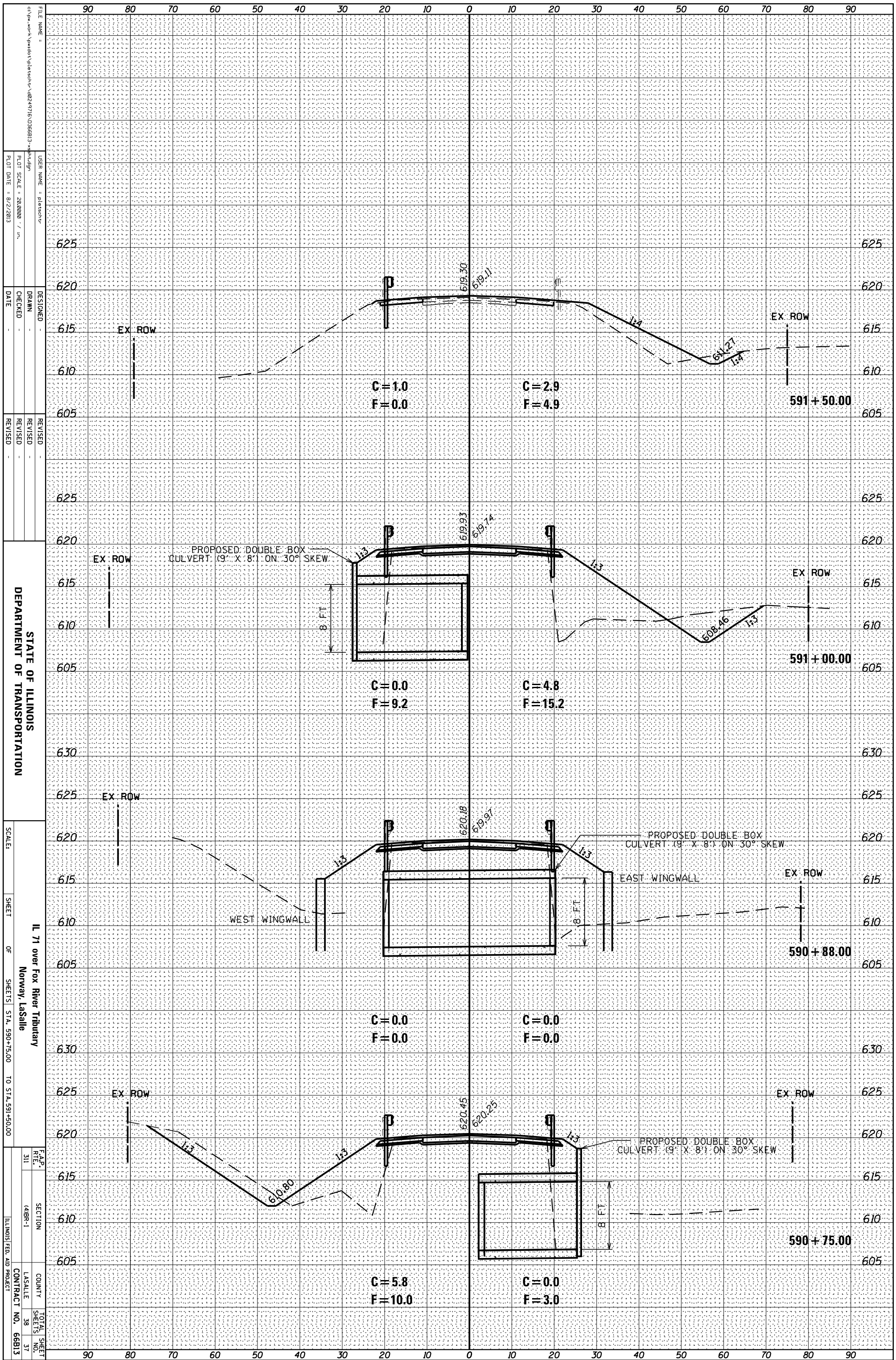
FILE NAME: c:\pwwork\product\p1\sheet\48249716\0366813\48249716.dwg
USER NAME: p1\sheet\48249716
PLOT SCALE: 28.0000 / in.
PLOT DATE: 8/2/2013

DESIGNED: DRAWN: CHECKED: DATE: REVISED: REVISED: REVISED: DATE:

F.A.P. R.T.E. 311 SECTION 14BR-1 COUNTY LA SALLE TOTAL SHEET SHEETS NO. 38 36 ILLINOIS FED. AID PROJECT CONTRACT NO. 66813

ORIGINAL SURVEY	SURVEYED	BY	DATE
NOTE BOOK	PLOTTED		
	TEMPLATE		
	AREAS		
	AREAS CHECKED		

FINAL SURVEY	SURVEYED	BY	DATE
NOTE BOOK	PLOTTED		
	TEMPLATE		
	AREAS		
	AREAS CHECKED		



STATE OF ILLINOIS
DEPARTMENT OF TRANSPORTATION

IL 71 over Fox River Tributary
Norway, LaSalle

SCALE: SHEET OF SHEETS STA. 590+75.00 TO STA. 591+50.00

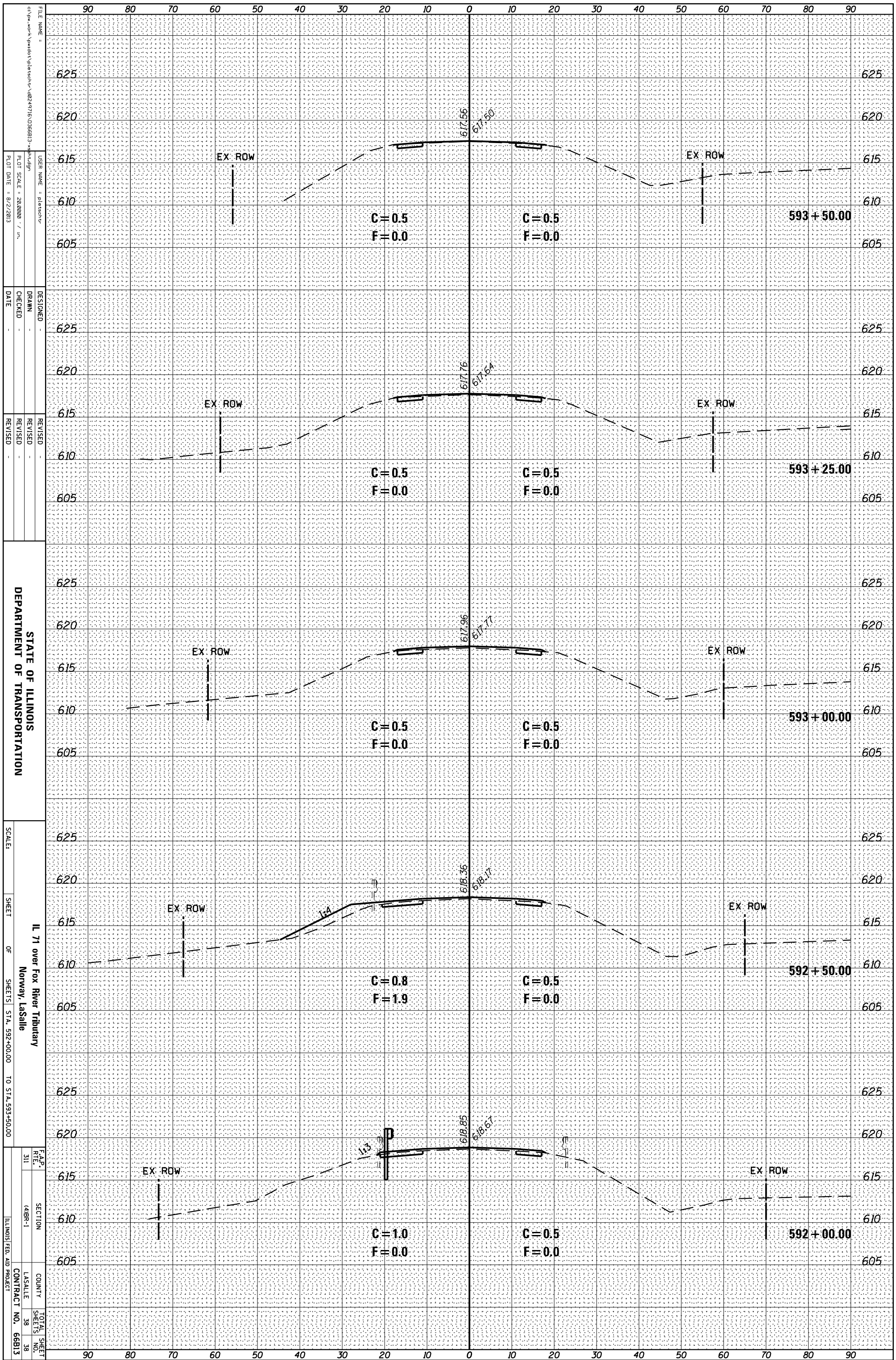
F.A.P. R.T.E. 311	SECTION 14BR-1	COUNTY LA SALLE	TOTAL SHEETS 38
			SHEET NO. 37
		CONTRACT NO. 66B13	

FILE NAME: c:\pwwork\product\presentsh\4824716\0366B13\48br1.dwg
USER NAME: plesche
DESIGNED: DRAWN: CHECKED: DATE: REVISED: REVISED: REVISED: REVISED:

PLLOT SCALE: 28,000 / in.
PLLOT DATE: 8/2/2013

ORIGINAL SURVEY	SURVEYED	BY	DATE
NOTE BOOK	PLOTTED		
	TEMPLATE		
	AREAS		
	AREAS CHECKED		

FINAL SURVEY	SURVEYED	BY	DATE
NOTE BOOK	PLOTTED		
	TEMPLATE		
	AREAS		
	AREAS CHECKED		



FILE NAME = c:\pwwork\product\p1\sheet\48249716_0366813.dwg
 USER NAME = pleasche
 PLOT SCALE = 28.0000 / in.
 PLOT DATE = 8/2/2013

DESIGNED -
 DRAWN -
 CHECKED -
 DATE -

REVISOR -
 REVISION -
 REVISION -
 REVISION -

STATE OF ILLINOIS
 DEPARTMENT OF TRANSPORTATION

SCALE: SHEET OF SHEETS STA. 592+00.00 TO STA. 593+50.00

IL 71 over Fox River Tributary
 Norway, LaSalle

F.A.P. RFE. 311 SECTION 14BR-1 COUNTY LA SALLE TOTAL SHEET NO. 38 SHEETS 38 CONTRACT NO. 66813 ILLINOIS FED. AID PROJECT