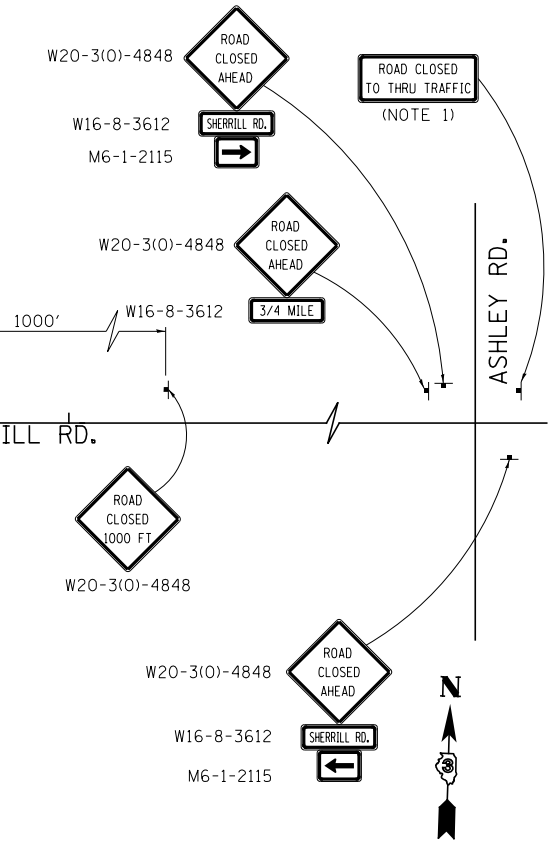
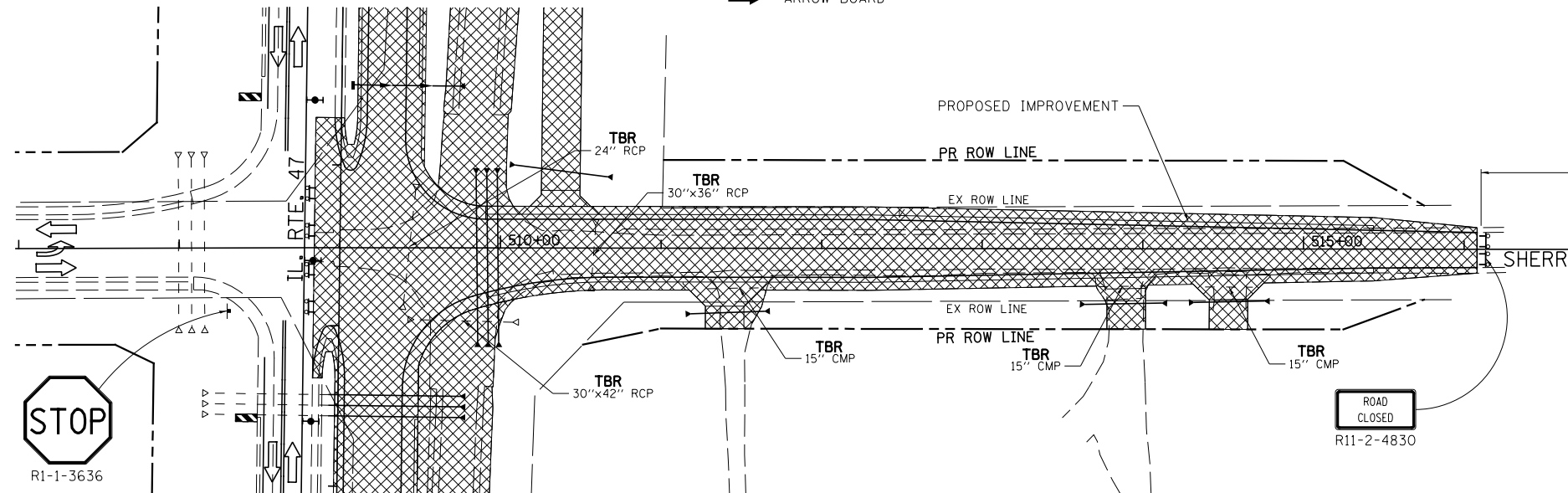
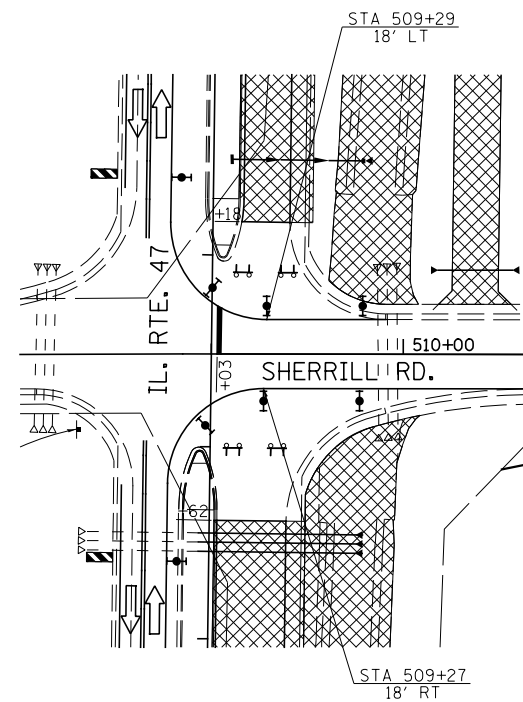


LEGEND

- DIRECTION INDICATOR BARRICADE WITH STEADY BURN MONODIRECTIONAL LIGHT
- TYPE II BARRICADE WITH STEADY BURN MONODIRECTIONAL LIGHT
- VERTICAL PANEL (BACK TO BACK)
- DIRECTION OF TRAFFIC
- CONSTRUCTION ZONE
- AREA CLOSED TO TRAFFIC
- TYPE III BARRICADE WITH FLASHING LIGHT (2-EA.)
- CONSTRUCTION SIGN
- TEMPORARY CONCRETE BARRIER
- FLASHING AMBER BEACON
- ARROW BOARD

NOTE:
1. SEE TEMPORARY INFORMATION SIGN DETAIL.



FILE NAME =	USER NAME = bdecreane	DESIGNED - LDZ	REVISED -
V:\3195\66883 (South Section)\CADD Sheets\0366883-sht-staging4-8.dgn		DRAWN - SRH/RMD	REVISED -
	PLOT SCALE = 100.0000' / in.	CHECKED - DJD	REVISED -
SHT_DOUBLE PLAN	PLOT DATE = 8/6/2013	DATE - 7/15/2013	REVISED -

**STATE OF ILLINOIS
DEPARTMENT OF TRANSPORTATION**

**MINOOKA RD. & SHERRILL RD.
STAGE 4 CONSTRUCTION & TRAFFIC CONTROL**

SCALE: 1"=50' SHEET 1 OF 1 SHEETS STA. N/A TO STA. N/A

F.A.P. RTE.	SECTION	COUNTY	TOTAL SHEETS	SHEET NO.
326	(110)R, BR & BR-1	GRUNDY	644	185
CONTRACT NO. 66883				
ILLINOIS FED. AID PROJECT				