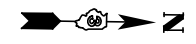


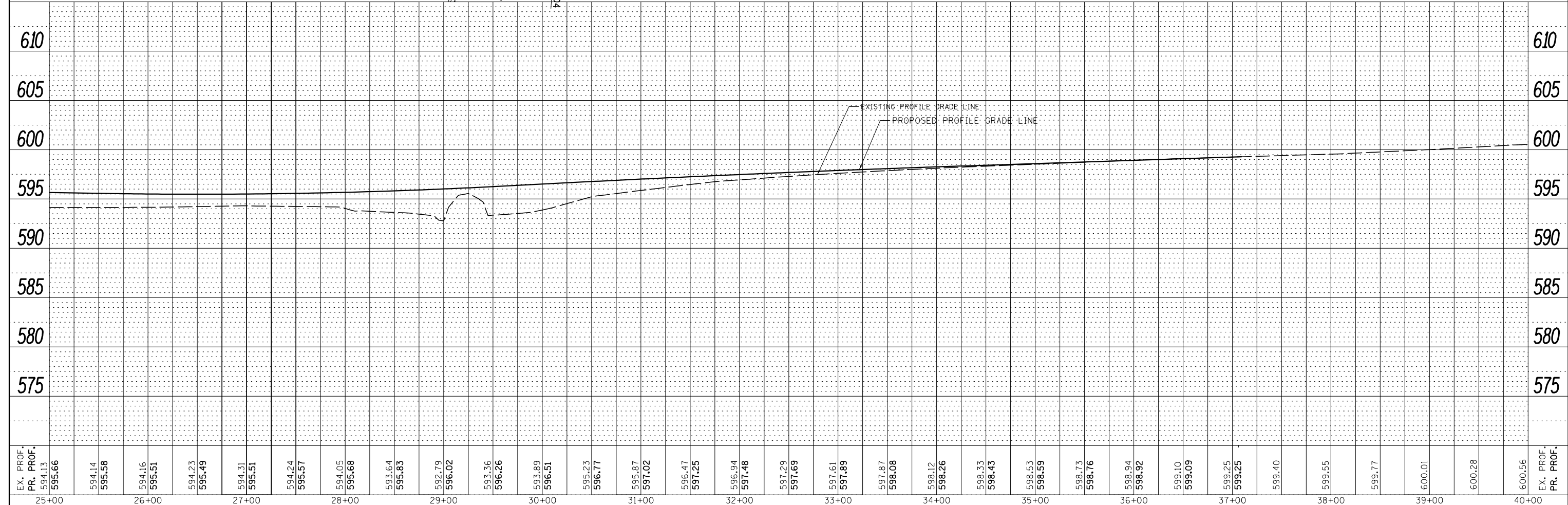
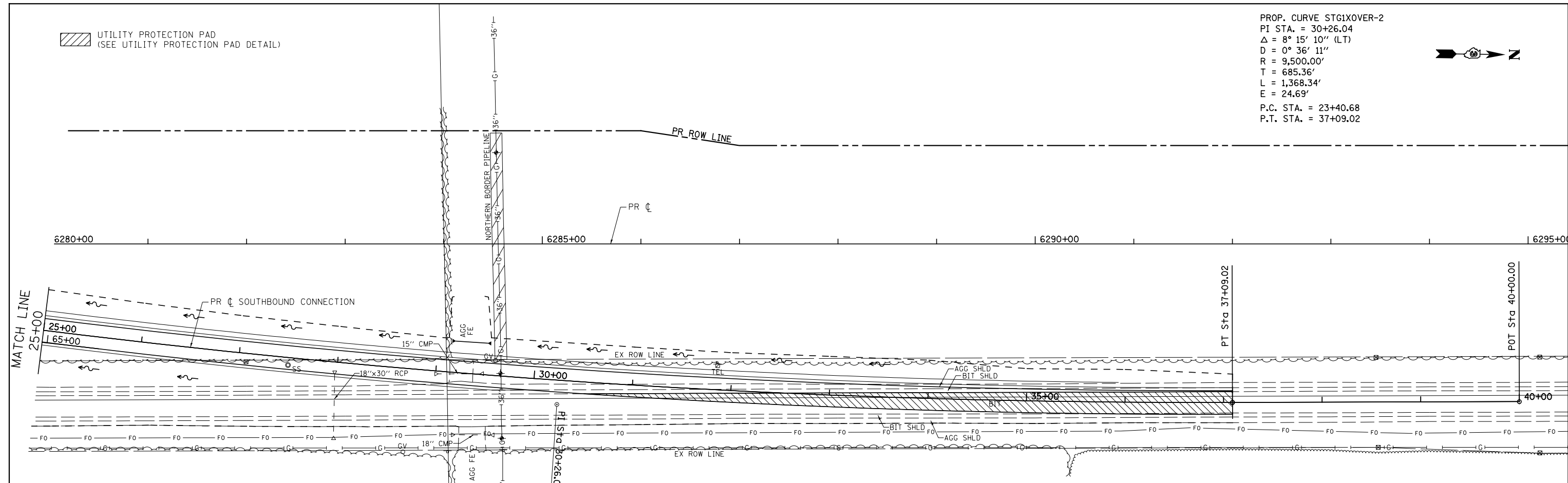
PROP. CURVE STG1XOVER-2  
 PI STA. = 30+26.04  
 $\Delta = 8^\circ 15' 10''$  (LT)  
 $D = 0^\circ 36' 11''$   
 $R = 9,500.00'$   
 $T = 685.36'$   
 $L = 1,368.34'$   
 $E = 24.69'$   
 P.C. STA. = 23+40.68  
 P.T. STA. = 37+09.02



UTILITY PROTECTION PAD  
 (SEE UTILITY PROTECTION PAD DETAIL)

PLAN	SURVEYED	DATE
	PLOTTED	
	ALIGNED	
	CHECKED	
	FILED	
	NO.	
	NO.	
	NO.	

PROFILE	SURVEYED	DATE
	PLOTTED	
	GRADES	
	CHECKED	
	STRUCTURE	
	NOT AT THIS OFFICE	
	NO.	
	NO.	



EX. PROF.	PR. PROF.	25+00	26+00	27+00	28+00	29+00	30+00	31+00	32+00	33+00	34+00	35+00	36+00	37+00	38+00	39+00	40+00	EX. PROF.	PR. PROF.
595.66	594.13																	600.56	600.56
594.14	595.58																		
594.16	595.51																		
594.23	595.49																		
594.31	595.51																		
594.24	595.57																		
594.05	595.68																		
593.64	595.83																		
592.79	596.02																		
593.36	596.26																		
593.89	596.51																		
595.23	596.77																		
595.87	597.02																		
596.47	597.25																		
596.94	597.48																		
597.29	597.69																		
597.61	597.89																		
597.87	598.08																		
598.12	598.26																		
598.33	598.43																		
598.53	598.59																		
598.73	598.76																		
598.94	598.92																		
599.10	599.09																		
599.25	599.25																		
599.40																			
599.55																			
599.77																			
600.01																			
600.28																			
600.56																			

FILE NAME =	USER NAME = bdecreane	DESIGNED - HLC	REVISED -	<b>STATE OF ILLINOIS DEPARTMENT OF TRANSPORTATION</b>	<b>IL. RTE. 47 SOUTHBOUND CONNECTION STORM SEWER AND UTILITY PLAN &amp; PROFILE</b>	F.A.P. RTE.	SECTION	COUNTY	TOTAL SHEETS	SHEET NO.	
V:\3195\66883 (South Section)\CADD Sheets\0366883-shr-drain-25.dgn		DRAWN - HLC	REVISED -			326	(110)R, BR & BR-1	KENDALL	644	223	
SHT_PLNPROF		CHECKED - CAS	REVISED -			CONTRACT NO. 66883					
		DATE - 7/15/2013	REVISED -			ILLINOIS FED. AID PROJECT					

SCALE: H=50 V=5 SHEET 25 OF 35 SHEETS STA. 25+00 TO STA. 37+09.02