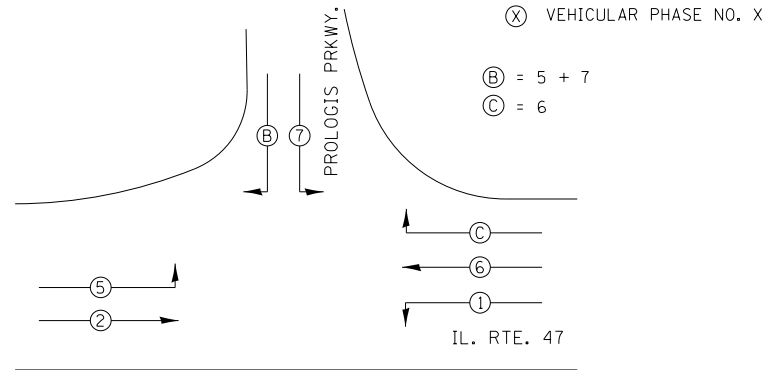




LEGEND



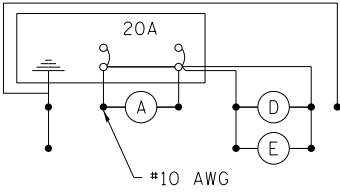
PHASE DESIGNATION DIAGRAM

SCHEDULE OF QUANTITIES

DESCRIPTION	UNIT	QUANTITY
SIGN PANEL - TYPE 1	SQ FT	34
SIGN PANEL - TYPE 2	SQ FT	25
WOOD SIGN SUPPORT	FOOT	13
SERVICE INSTALLATION - GROUND MOUNTED	EACH	1
UNDERGROUND CONDUIT, GALVANIZED STEEL, 3" DIA.	FOOT	44
UNDERGROUND CONDUIT, GALVANIZED STEEL, 4" DIA.	FOOT	328
UNDERGROUND CONDUIT, PVC, 1" DIA.	FOOT	100
UNDERGROUND CONDUIT, PVC, 2" DIA.	FOOT	1016
UNDERGROUND CONDUIT, PVC, 2 1/2" DIA.	FOOT	51
UNDERGROUND CONDUIT, PVC, 3" DIA.	FOOT	114
UNDERGROUND CONDUIT, PVC, 4" DIA.	FOOT	107
HANDHOLE, PORTLAND CEMENT CONCRETE	EACH	8
DOUBLE HANDHOLE, PORTLAND CEMENT CONCRETE	EACH	1
ELECTRIC CABLE IN CONDUIT, 600V (XLP-TYPE USE) 3-1/C NO. 10	EACH	2538
LUMINAIRE, SODIUM VAPOR, HORIZONTAL MOUNT, 400 WATT	FOOT	3
MAINTENANCE OF EXISTING TRAFFIC SIGNAL INSTALLATION	EACH	1
MAINTENANCE OF EXISTING FLASHING BEACON INSTALLATION	EACH	1
FULL-ACTUATED CONTROLLER AND TYPE V CABINET, SPECIAL	EACH	1
UNINTERRUPTIBLE POWER SUPPLY, EXTENDED	EACH	1
TRANSCIEVER - FIBER OPTIC	EACH	1
ELECTRIC CABLE IN CONDUIT, SIGNAL NO. 14 3C	FOOT	801
ELECTRIC CABLE IN CONDUIT, SIGNAL NO. 14 5C	FOOT	2759
ELECTRIC CABLE IN CONDUIT, SIGNAL NO. 14 7C	FOOT	1343
ELECTRIC CABLE IN CONDUIT, LEAD-IN, NO. 14, 1-PAIR	FOOT	3236
ELECTRIC CABLE IN CONDUIT, SERVICE NO. 6 2C	FOOT	234
ELECTRIC CABLE IN CONDUIT, EQUIPMENT GROUNDING CONDUCTOR, NO. 6 1C	FOOT	1486
TRAFFIC SIGNAL POST, GALVANIZED STEEL 16 FT.	EACH	3
STEEL COMBINATION MAST ARM ASSEMBLY AND POLE 52 FT.	EACH	1
STEEL COMBINATION MAST ARM ASSEMBLY AND POLE 62 FT.	EACH	1
STEEL COMBINATION MAST ARM ASSEMBLY AND POLE 68 FT.	EACH	1
CONCRETE FOUNDATION, TYPE A	FOOT	9
CONCRETE FOUNDATION, TYPE C	FOOT	3
CONCRETE FOUNDATION, TYPE E 36-INCH DIAMETER	FOOT	15
CONCRETE FOUNDATION, TYPE E 42-INCH DIAMETER	FOOT	46
FLASHING BEACON INSTALLATION	EACH	1
SIGNAL HEAD, POLYCARBONATE, LED, 1-FACE, 3-SECTION, BRACKET MOUNTED	EACH	3
SIGNAL HEAD, POLYCARBONATE, LED, 1-FACE, 3-SECTION, MAST ARM MOUNTED	EACH	7
SIGNAL HEAD, POLYCARBONATE, LED, 1-FACE, 5-SECTION, BRACKET MOUNTED	EACH	3
SIGNAL HEAD, POLYCARBONATE, LED, 1-FACE, 5-SECTION, MAST ARM MOUNTED	EACH	3
TRAFFIC SIGNAL BACKPLATE, LOUVERED, FORMED PLASTIC	EACH	16
INDUCTIVE LOOP DETECTOR	EACH	12
DETECTOR LOOP, TYPE 1	FOOT	1193
LIGHT DETECTOR	EACH	3
LIGHT DETECTOR AMPLIFIER	EACH	1
TEMPORARY TRAFFIC SIGNAL INSTALLATION	EACH	1
REMOVE EXISTING TRAFFIC SIGNAL EQUIPMENT	EACH	1
REMOVE EXISTING HANDHOLE	EACH	8
REMOVE EXISTING DOUBLE HANDHOLE	EACH	1
REMOVE EXISTING CONCRETE FOUNDATION	EACH	5
REMOVE EXISTING FLASHING BEACON INSTALLATION COMPLETE	EACH	1
ELECTRIC CABLE IN CONDUIT NO. 20 3/C, TWISTED, SHIELDED	FOOT	801
TEMPORARY TRAFFIC SIGNAL TIMING	EACH	1
LOOP DETECTOR TESTING	EACH	1

PROPOSED CABLE DIAGRAM LEGEND

- CONTROLLER AND CABINET
- SERVICE INSTALLATION
- TRAFFIC SIGNAL HEAD W/ BACKPLATE
- "F" INDICATES FLASHING SECTION
- DENOTES NUMBER OF CONDUCTORS
- LUMINAIRE, SODIUM VAPOR, 400 WATT
- DETECTOR LOOP
- DETECTOR LOOP SYSTEM
- GROUND ROD AT HANDHOLE OR DOUBLE HANDHOLE
- GROUND ROD AT POST (P) OR MAST ARM POLE (MA)
- GROUND ROD AT ELECTRIC SERVICE INSTALLATION
- GROUND ROD AT CONTROLLER
- CONFIRMATION BEACON
- LIGHT DETECTOR
- SERVICE CABLE
- ELECTRIC CABLE IN CONDUIT, SERVICE, NO. 6 2C
- LIGHTING CABLE 600V (XLP-TYPE USE) 3 - 1/C NO. 10



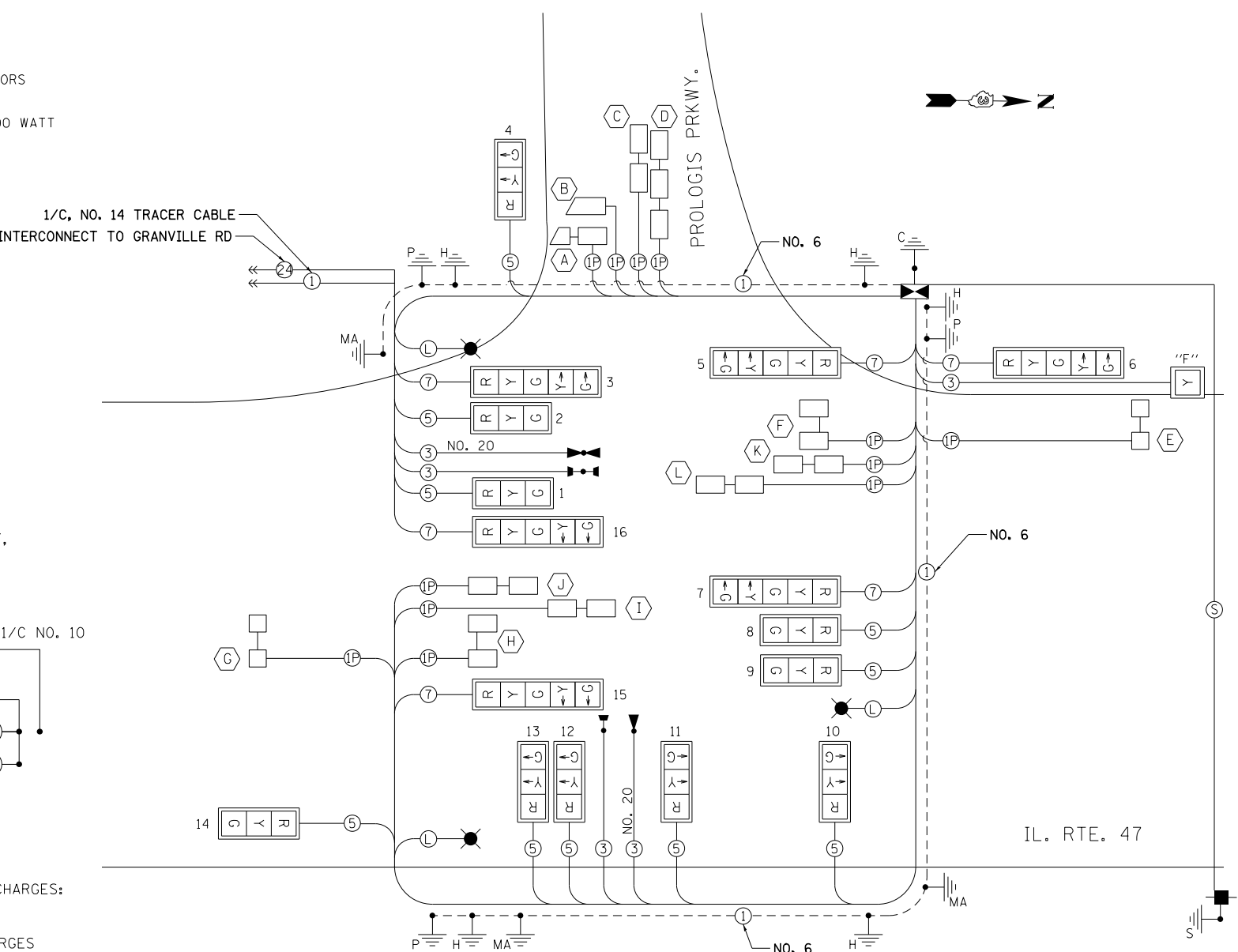
LIGHTING CIRCUIT DIAGRAM

AGENCY RESPONSIBLE FOR ENERGY CHARGES:
CITY OF MORRIS

CONTRACTOR PAYS ALL ENERGY CHARGES
UNTIL PROJECT IS ACCEPTED.

PROPOSED EMERGENCY VEHICLE PREEMPTORS		
EMERGENCY VEHICLE PREEMPTOR	3	4
MOVEMENT	←→	↓

EMERGENCY VEHICLE PREEMPTION SEQUENCE



CABLE DIAGRAM

THE TRAFFIC SIGNAL EQUIPMENT FOR THIS CONTRACT SHALL BE EAGLE BRAND. THE CONTROLLERS FURNISHED SHALL BE THE MOST CURRENT EAGLE BRAND.

THE EMERGENCY VEHICLE PRE-EMPTION EQUIPMENT SHALL BE COMPLETELY COMPATIBLE WITH ALL COMPONENTS OF THE EQUIPMENT CURRENTLY USED BY THE CITY OF MORRIS. THE CITY CURRENTLY USES TOMAR EQUIPMENT.

NOTIFY THE TRAFFIC SIGNAL SECTION AT (815) 434-8506 72 HOURS IN ADVANCE TO REDESIGN THE DETECTOR LOOPS, IF POSSIBLE, TO AVOID CONSTRUCTION JOINTS.