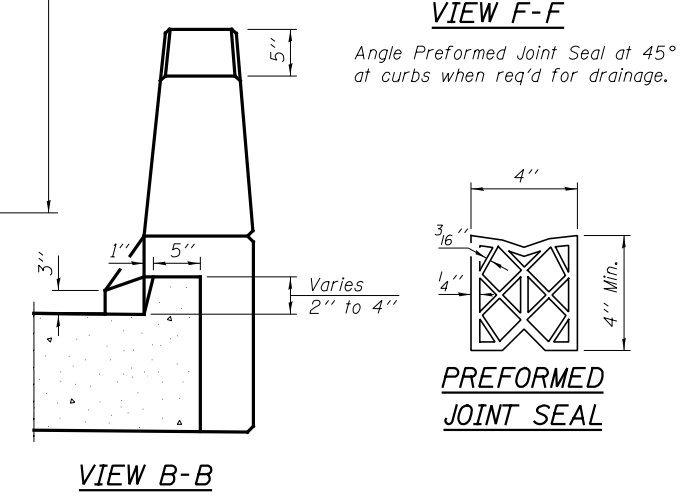
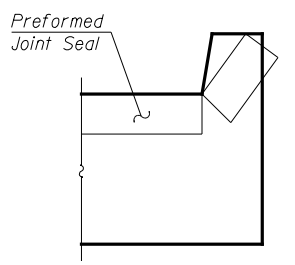
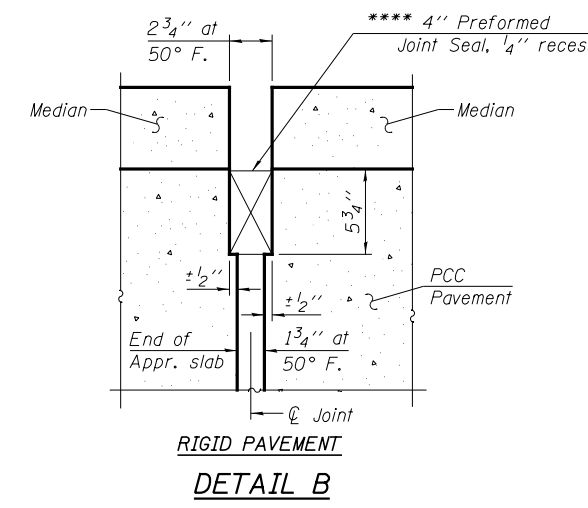
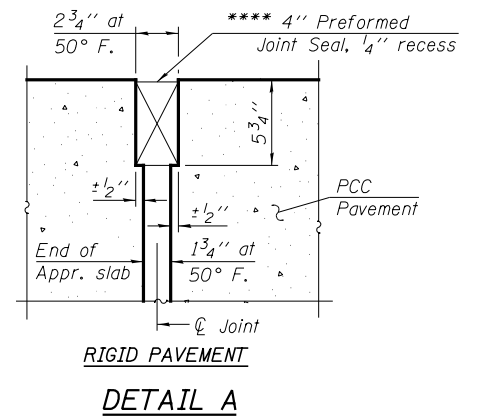
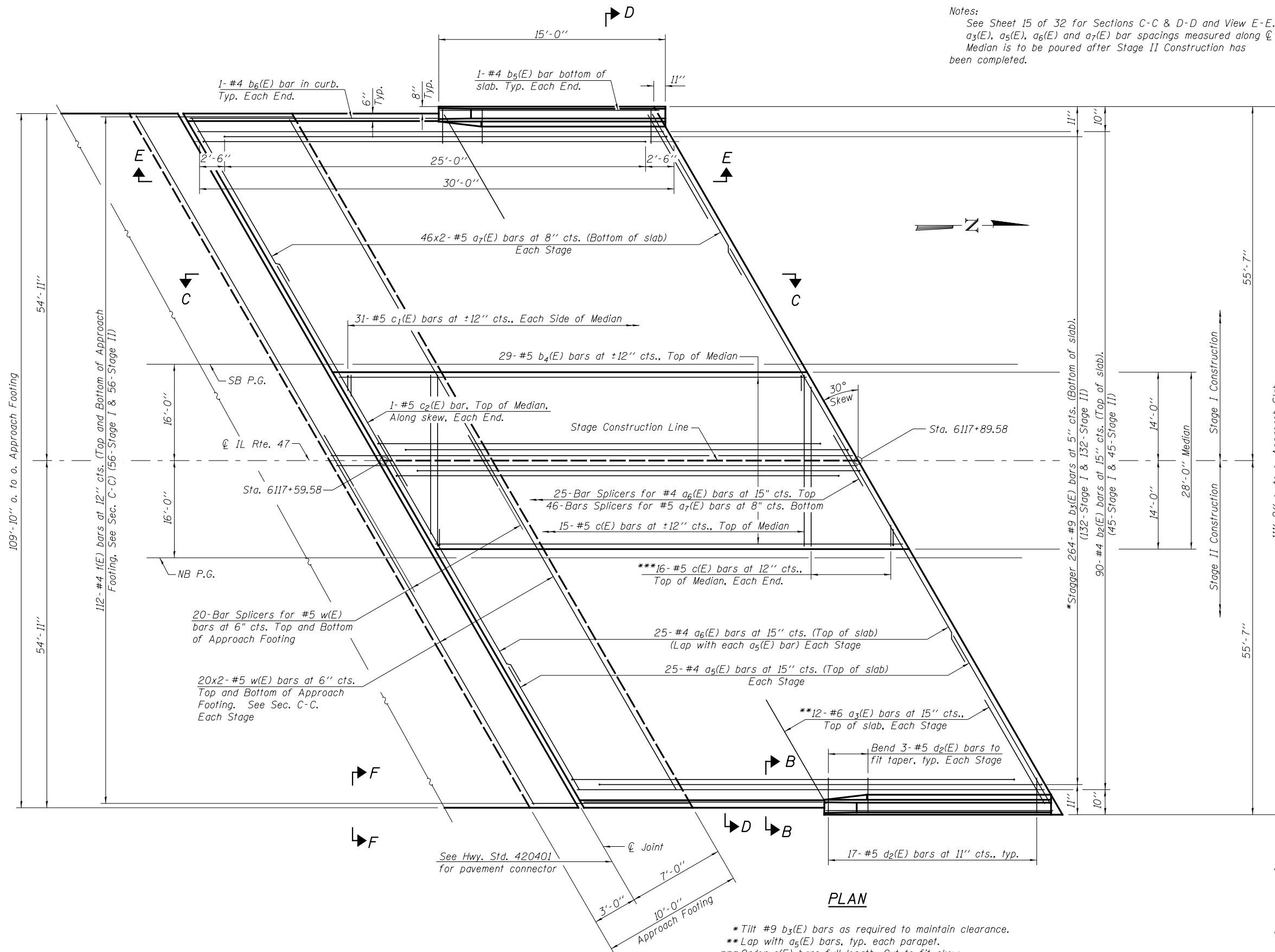


Notes:
 See Sheet 15 of 32 for Sections C-C & D-D and View E-E.
 $a_3(E)$, $a_5(E)$, $a_6(E)$ and $a_7(E)$ bar spacings measured along ϕ Rdwy.
 Median is to be poured after Stage II Construction has been completed.



*Tilt #9 $b_3(E)$ bars as required to maintain clearance.
 **Lap with $a_5(E)$ bars, typ. each parapet.
 ***Order c(E) bars full length. Cut to fit skew and use remainder of bars in opposite end.
 **** Cost included with Concrete Superstructure.

(Sheet 1 of 2)

V:\3195\Structure\032-0122\0320122-6683-014 SOUTH APPR SLAB 1.dgn	USER NAME = bdecræne	DESIGNED - STM	Hutchison Engineering, Inc. JACKSONVILLE-SHOREWOOD-PEORIA	STATE OF ILLINOIS DEPARTMENT OF TRANSPORTATION	SOUTH BRIDGE APPROACH SLAB DETAILS STRUCTURE NO. 032-0122	F.A.P. RTE.	SECTION	COUNTY	TOTAL SHEETS	SHEET NO.
	PLOT SCALE = NONE	CHECKED - BAN				326	110BR	GRUNDY	644	340
	PLOT DATE = 8/6/2013	DRAWN - STM				CONTRACT NO. 66B83				
		CHECKED - BAN				ILLINOIS FED. AID PROJECT				