



Prairie Parkway  
Section IL47A

ROCK CORE LOG

Date 06/18/2009

ROUTE IL 47 DESCRIPTION Structure Boring LOGGED BY Brandon Wilson

SECTION IL47A LOCATION IL 47 over Saratoga Creek SEC. 16 TWP. 34N RNG. 7E PM

COUNTY Grundy CORING METHOD Conventional 5' run

STRUCT. NO. 032-0122 CORING BARREL TYPE & SIZE NWD4 2,985x2.060

Station 6118+40.00 Core Diameter 2.1 in  
 Top of Rock Elev. 522.1 ft  
 BORING NO. WC33-B02 Begin Core Elev. 522.1 ft  
 Station 6117+89.52  
 Offset 30.45 LT  
 Ground Surface Elev. 560.10 ft

REMARKS	DEPTH (ft)	CORE (#)	RECOVERY (%)	ROQ (%)	CORE TIME (min/ft)	STRENGTH (tsf)
Very weak, very poor quality, gray to pale green, WEATHERED SHALE	Run 1	38	1	73	9	
Very weak, very poor quality, gray to pale green, WEATHERED SHALE	Run 2	41.75	2	78	0	
Strong, excellent quality, white to light gray DOLOSTONE	Run 3	57.5	3	98	92	
Strong, excellent quality, white to light gray DOLOSTONE	Run 4	62.5	4	100	100	

Color pictures of the cores Yes  
 Cores will be stored for examination until  
 The "Strength" column represents the uniaxial compressive strength of the core sample (ASTM D-2938)

BBS 138 (Rev. 3/01)



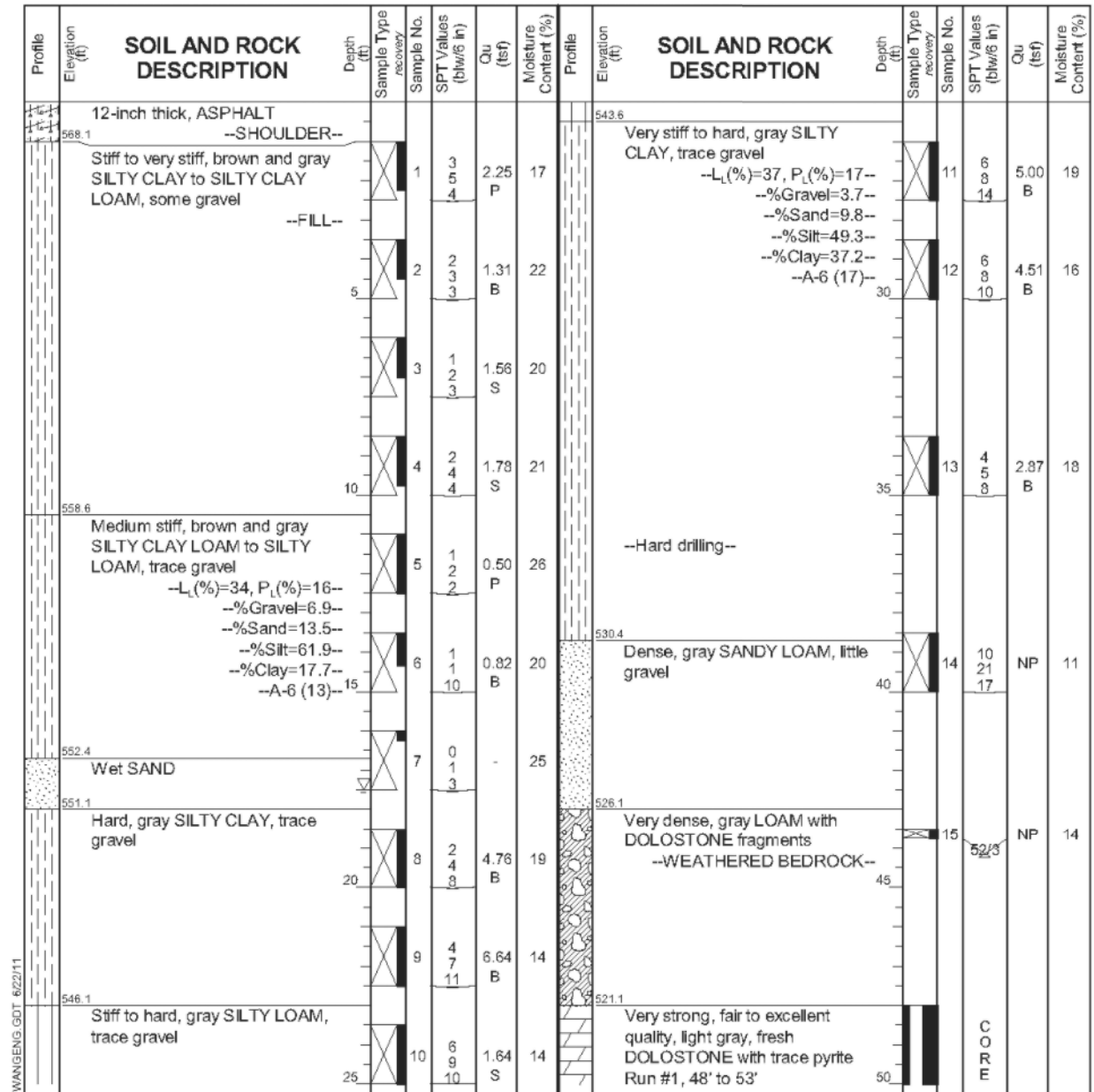
wangeng@wangeng.com  
 1145 N Main Street  
 Lombard, IL 60148  
 Telephone: 630 953-9928  
 Fax: 630 953-9938

BORING LOG WC33-B03

WEI Job No.: 790-36-01

Datum: NGVD  
 Elevation: 569.14 ft  
 North: 1731779.21 ft  
 East: 959690.12 ft  
 Station: 6119+29.36  
 Offset: 63.55 RT

Client TranSystems Corporation  
 Project Prairie Parkway  
 Location IL 47 Over Saratoga Creek, Grundy Co., IL



WANGENGINC 7903601.GPJ WANGENG.GDT 6/22/11

GENERAL NOTES		WATER LEVEL DATA	
Begin Drilling	12-03-2009	Complete Drilling	12-08-2009
Drilling Contractor	WTS	Drill Rig	B-57 TMR
Driller	K&J	Logger	B. Wilson
Checked by	C. Marin	While Drilling	17.50 ft
Drilling Method	3.25 IDA HSA; Boring backfilled upon completion	At Completion of Drilling	WASHED
		Time After Drilling	NA
		Depth to Water	NA