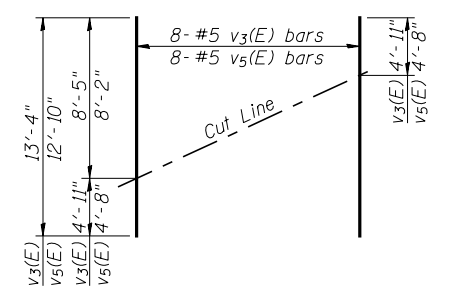
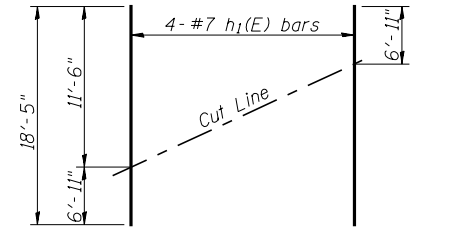


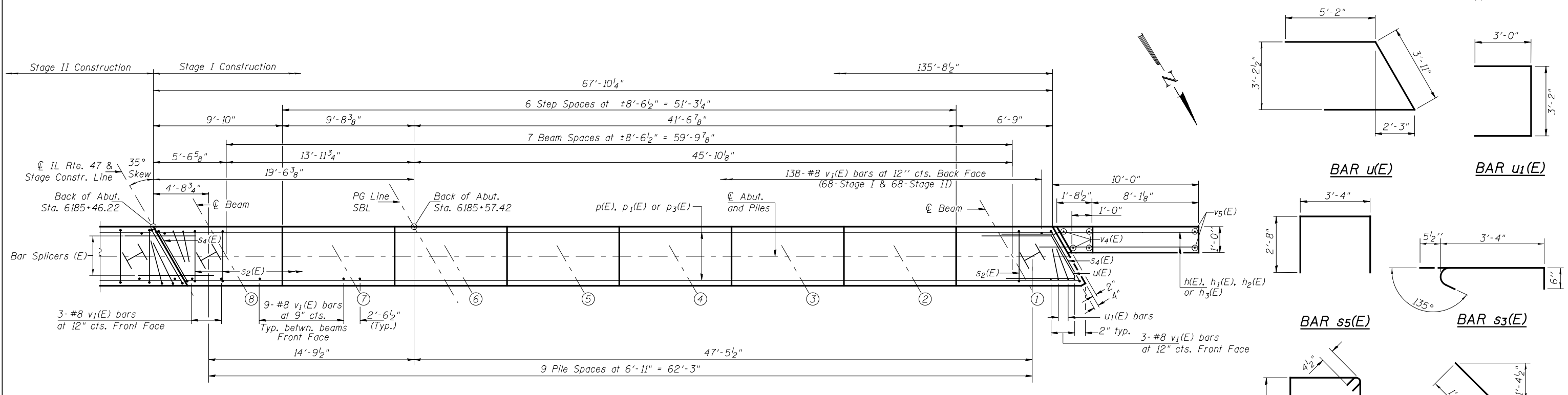
ELEVATION



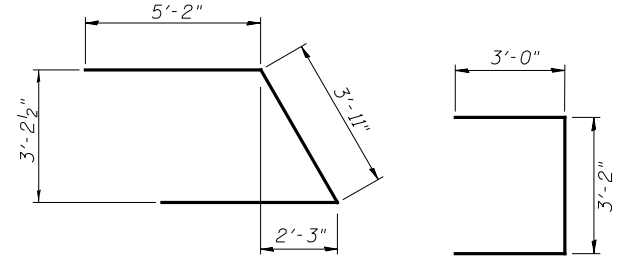
FIELD CUTTING DIAGRAM
Order v3(E) and v5(E) full length. Cut as shown and use remainder of bars in opposite face.



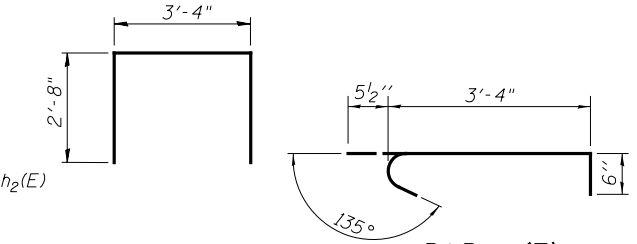
FIELD CUTTING DIAGRAM
Order h1(E) full length. Cut as shown and use remainder of bars in opposite face.



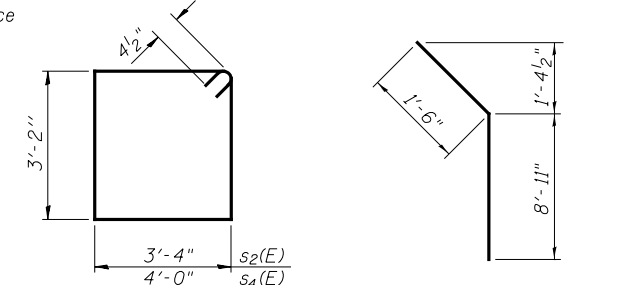
PLAN



BAR u(E) BAR u1(E)



BAR s5(E) BAR s3(E)



BARS s2(E) & s4(E) BAR h2(E)

MIN. BAR LAP
#7 = 5'-10"

Notes:
Pour steps monolithically with cap.
See sheet 23 of 30 for Pile Details.
See sheet 24 of 30 for Bar Splicer Details.
See sheet 19 of 30 for Pile Data.
See sheet 19 of 30 for Bill of Materials.
See sheet 19 of 30 for Section Thru Abutment.

USER NAME = bdecrane DESIGNED - NPH CHECKED - JOH DRAWN - RMD CHECKED - JOH/NPH	Hutchison Engineering, Inc. JACKSONVILLE-SHOREWOOD-PEORIA	STATE OF ILLINOIS DEPARTMENT OF TRANSPORTATION	SOUTH ABUTMENT STRUCTURE NO. 032-0123	F.A.P. RTE.	SECTION	COUNTY	TOTAL SHEETS	SHEET NO.
				326	110BR-1	GRUNDY	644	378
			SHEET NO. 20 OF 30 SHEETS	CONTRACT NO. 66B83 ILLINOIS FED. AID PROJECT				