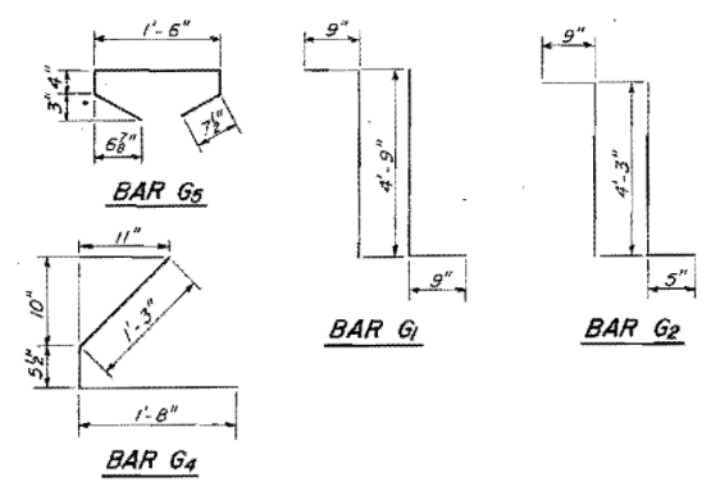
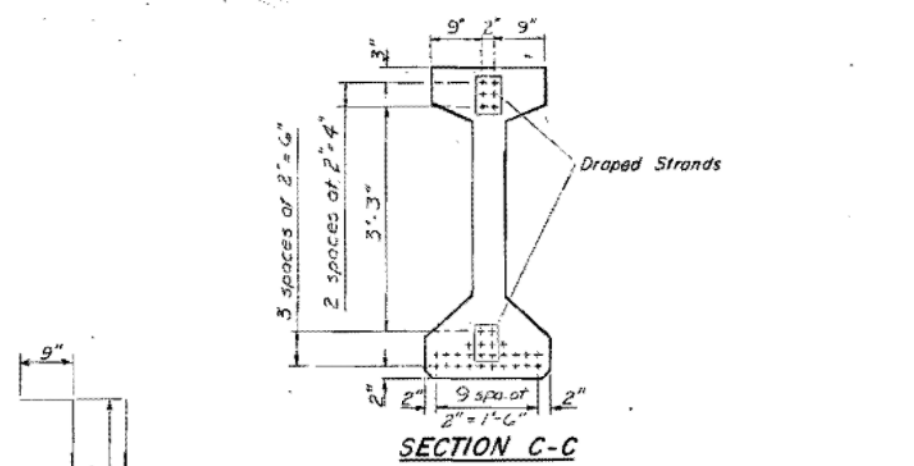
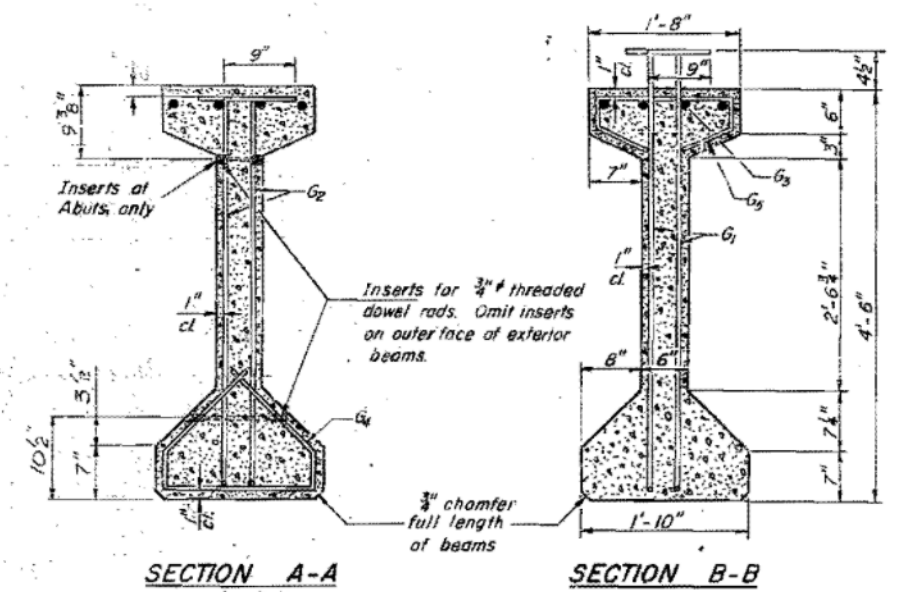
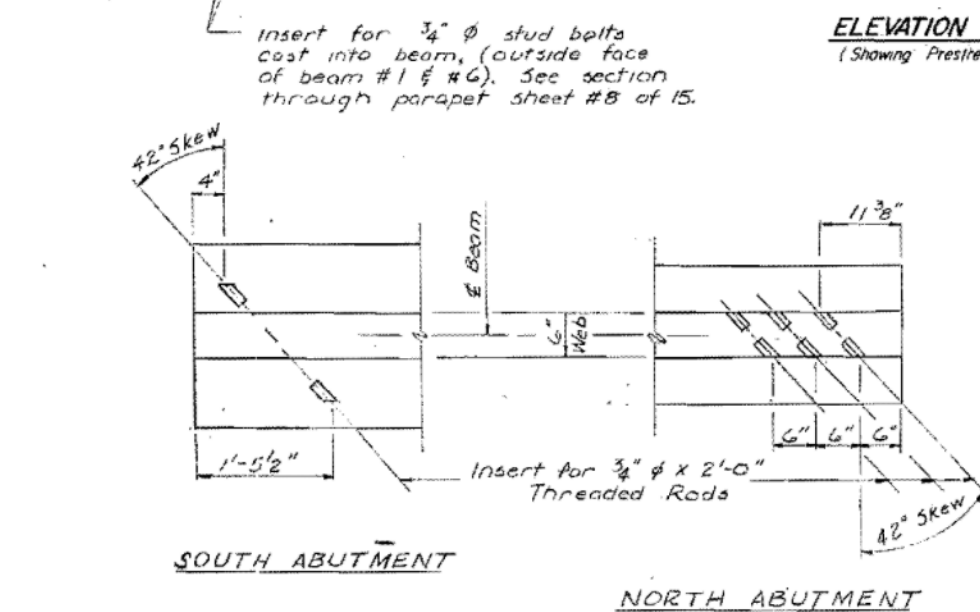
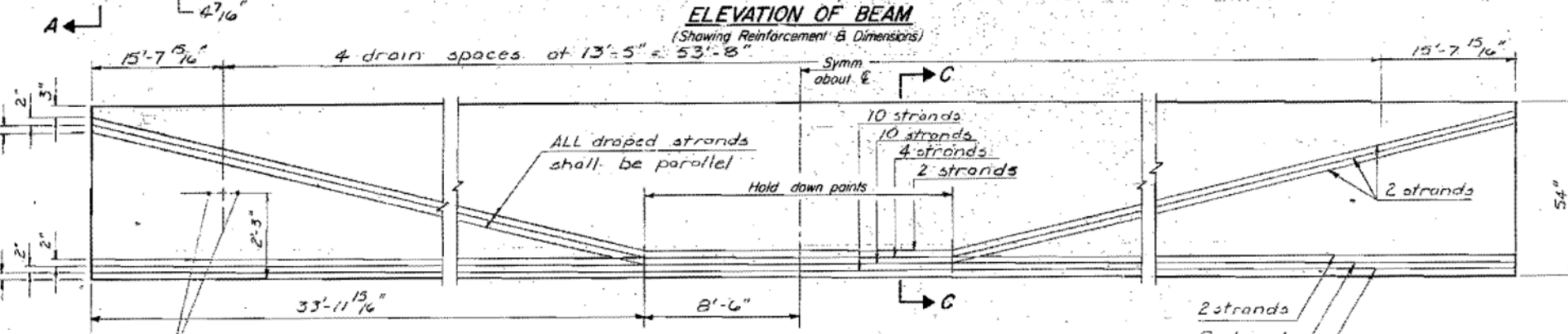
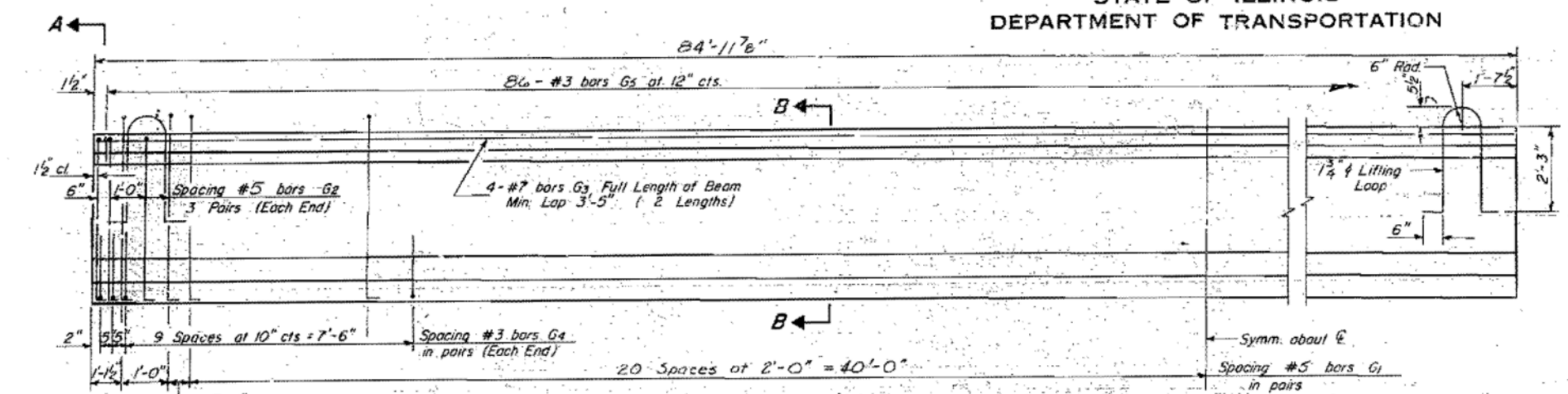


STATE OF ILLINOIS
DEPARTMENT OF TRANSPORTATION

PROJECT NO.	SECTION	SHEET	TOTAL SHEETS	SHEET NO.
100	4	106	61	15



***BAR LIST**

Bar	No.	Size	Length	Shape
G1	90	#5	6'-3"	7L
G2	12	#5	5'-5"	7L
G3	B	#7	44'-3"	—
G4	48	#3	3'-4 1/2"	L
G5	86	#3	3'-5"	□

* For one beam only.

BILL OF MATERIAL

Item	Unit	Total
Furnishing & Erecting Precast Prestressed Concrete I-Beams, 54"	Lin. Ft.	510

NOTES

All inserts and threaded dowel rods for inserts, reinforcing and Prestressing Steel, and other items which are cast into the Precast Concrete I-Beams shall be included in the contract unit price per linear foot of "Furnishing and Erecting Precast Prestressed Concrete I-Beams, 54 in."

Insert for 3/4" threaded dowel rods are to be two strut, coil type for interior I-Beams and single coil, flared loop type for exterior I-Beams.

Prestressing steel shall be non-galvanized high strength, stress-relieved 7-wire strand, Grade 270.

The nominal diameter shall be 1/2" and the nominal cross-sectional area shall be 0.153 sq. in.

Non-prestressing steel shall conform to A.A.S.H.T.O. designation M-31, M-42, or M-53 Grade 60.

Steel for lifting loops shall be non-deformed bars f'y = 40,000 psi. Required release strength, f'ci, shall be 4000 psi.

BEAM DETAILS
F.A. ROUTE 100 SECTION 110BR
GRUNDY COUNTY
STATION 136+58.25

FOR INFORMATION ONLY

DESIGNED: VECTOR VELTZ
CHECKED: Eric E. Hardy
DRAWN: RITA WILLIAMS
CHECKED: V.V. EEL pmp

EXAMINED: Craig D. Kasper
DATE: May 22 1997

APPROVED: James J. Paulson
DATE: 7/15/2013