

ROUTE NO.	SECTION	COUNTY	SHEET	SHEET NO.
100	BR & BR-1	GRUNDY	64	15
ILLINOIS FED. AID PROJECT				

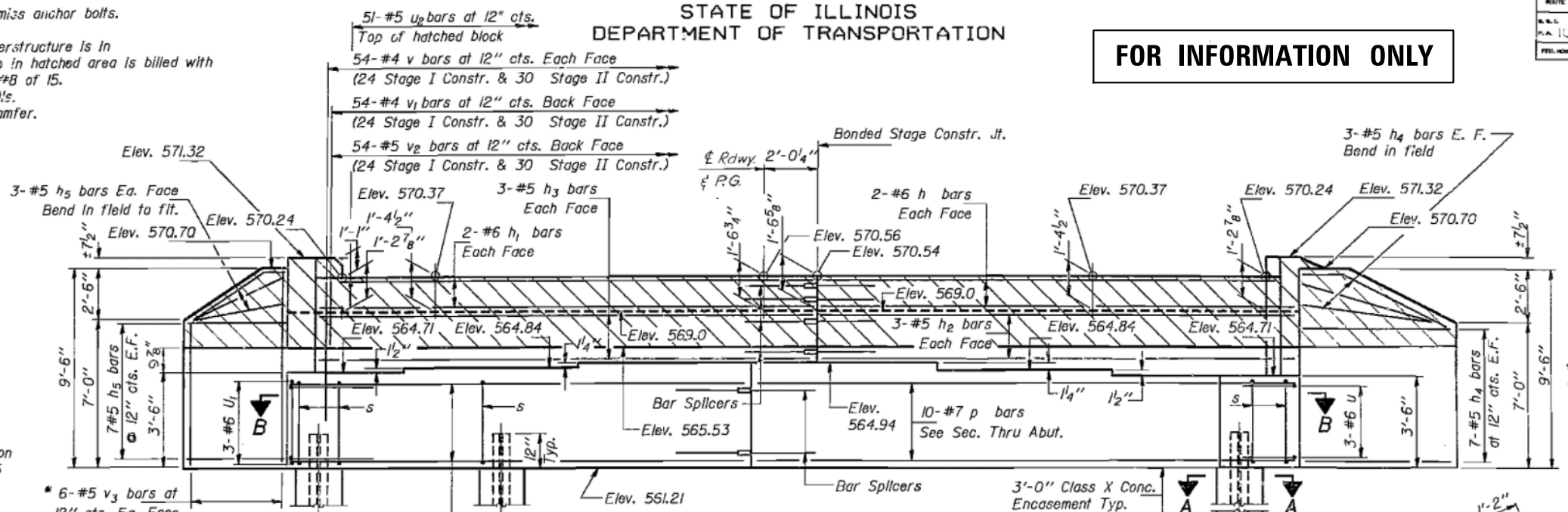
STATE OF ILLINOIS
DEPARTMENT OF TRANSPORTATION

FOR INFORMATION ONLY

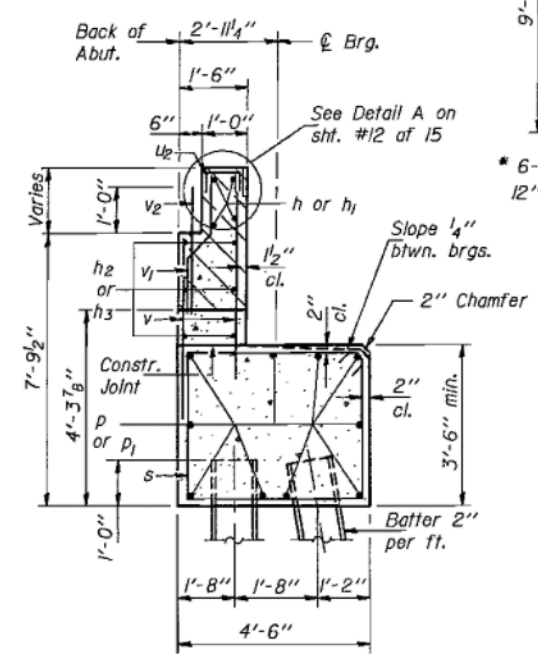
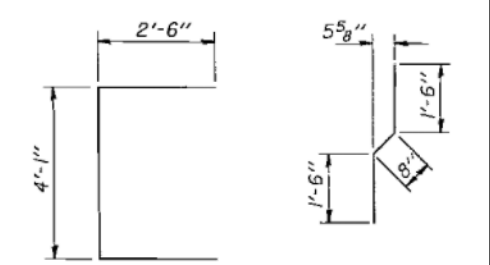
Notes: Space reinforcement bars in cap to miss anchor bolts. Pour steps monolithically with cap. Hatched area to be poured after superstructure is in place. Class X Concrete Superstructure in hatched area is billed with the superstructure. Quantity on sheet #8 of 15. See sheet #5 of 15 for Splicer Details. All edges shall have standard 3/4" chamfer.

PILE DATA

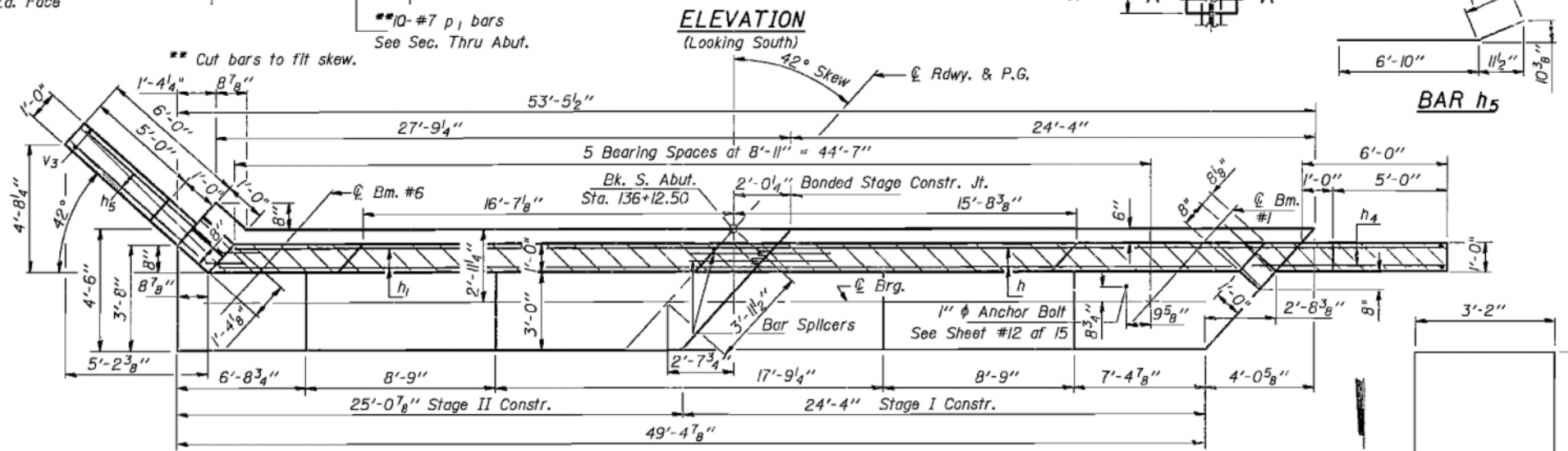
Type: Steel HPI0x42
Capacity: Driven to refusal
Est. Length: 36 Ft.
No. Required: 10 + 1 Test Pile



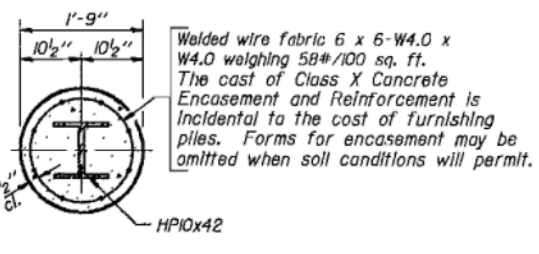
FIELD CUTTING DIAGRAM v3 BAR
Order v3 bars full length. Cut to fit and use remainder in opposite face.



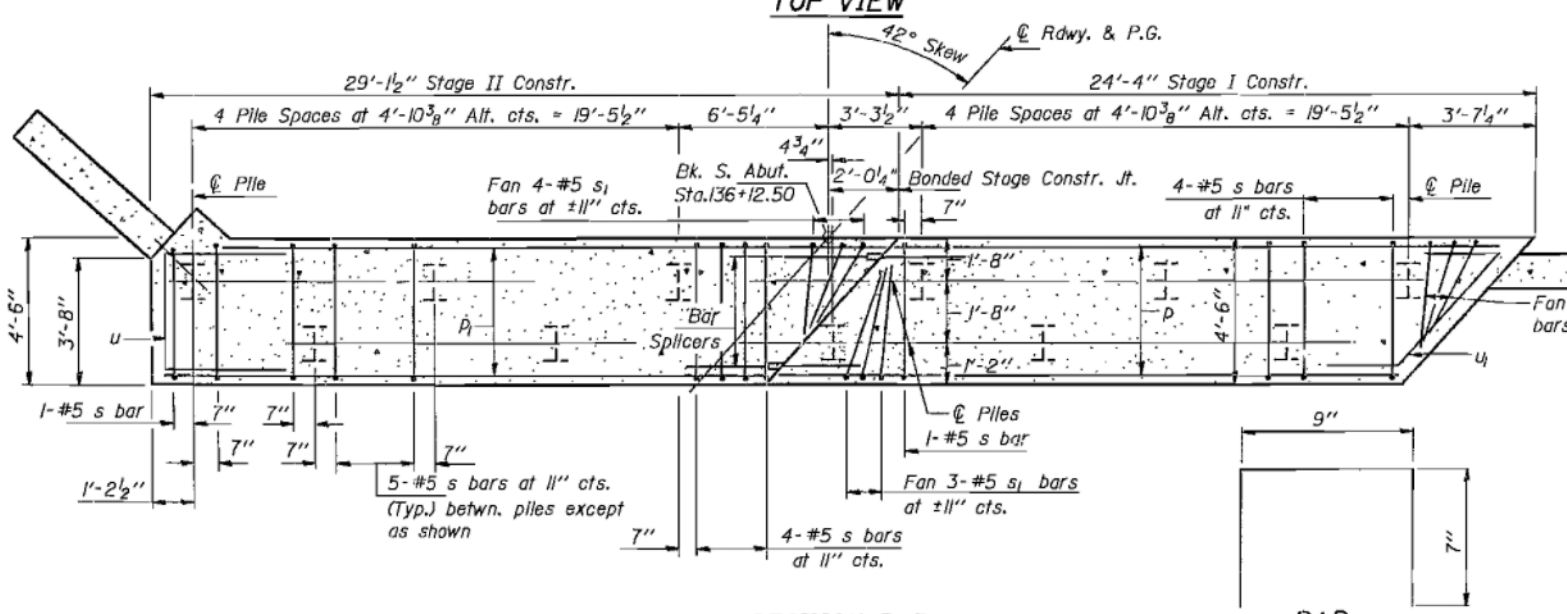
SEC. THRU ABUT.



TOP VIEW



SECTION A-A



SECTION B-B

BILL OF MATERIAL

Bar	No.	Size	Length	Shape	
h	4	#6	24'-2"	—	
h1	4	#6	28'-10"	—	
h2	6	#5	24'-3"	—	
h3	6	#5	28'-10"	—	
h4	20	#5	8'-0"	—	
h5	20	#5	8'-0"	—	
p	10	#7	24'-2"	—	
p1	10	#7	28'-10"	—	
s	44	#5	15'-7"	□	
s1	10	#5	11'-6"	□	
u	3	#6	9'-1"	—	
u1	3	#6	10'-5"	—	
u2	5	#5	1'-11"	—	
v	108	#4	6'-0"	—	
v1	54	#4	3'-8"	—	
v2	54	#5	4'-0"	—	
v3	12	#5	16'-0"	—	
Class X Concrete				Cu. Yd.	36.9
Reinforcement Bars				Lbs.	4,080
Steel Piles (HPI0x42)				LIn. Ft.	360
Steel Test Piles (HPI0x42)				Each	1

SOUTH ABUTMENT
F.A. RT. 100 SEC. 110BR
GRUNDY COUNTY
STA. 136+58.25

DESIGNED: Victor Velazquez
CHECKED: Eve Handley
DRAWN: Rita Williams
CHECKED: V.V. pmp

EXAMINED: Prof. J. Kaspar
PASSED: James J. Kasper
APPROVED: [Signature]