

STATE OF ILLINOIS
DEPARTMENT OF TRANSPORTATION

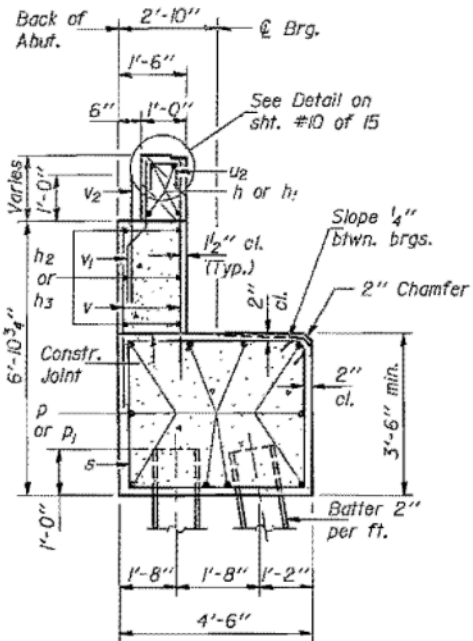
DATE	REVISION	BY	NO.	DATE	SHEET NO. 14
					15 SHEETS

Notes: Space reinforcement bars in cap to miss anchor bolts.
Pour steps monolithically with cap.
Hatched area to be poured after superstructure is in place. Class X Concrete Superstructure in hatched area is billed with the superstructure. Quantity on sheet #8 of 15.
See sheet #5 of 15 for Splicer Details.
All edges shall have standard 3/4" chamfer.

FOR INFORMATION ONLY

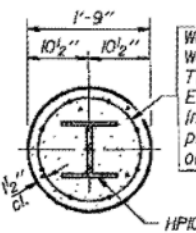
PILE DATA

Type: Steel HPI0x42
Capacity: Driven to refusal
Est. Length: 42 Ft.
No. Required: 10 + 1 test pile



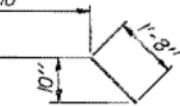
SEC. THRU ABUT.

BAR h5



SECTION A-A

Welded wire fabric 6 x 6-W4.0 x W4.0 weighing 58#/100 sq. ft. The cost of Class X Concrete Encasement and Reinforcement is incidental to the cost of furnishing piles. Forms for encasement may be omitted when soil conditions will permit.

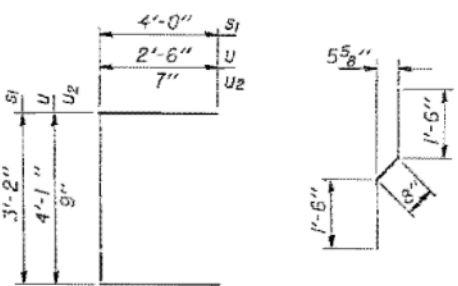


BAR h5

BAR s1, u & u2

BAR v1

* FIELD CUTTING DIAGRAM!
Order v3 bars full length. Cut to fit and use remainder in opposite face.



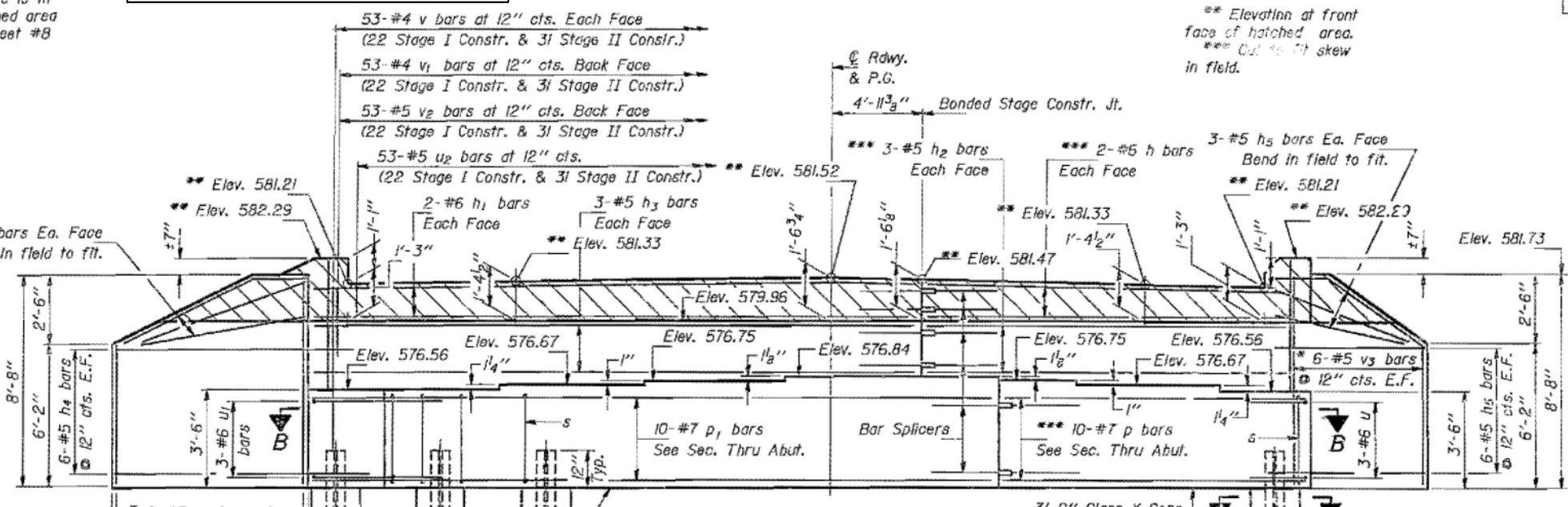
BAR s1, u & u2

BAR v1

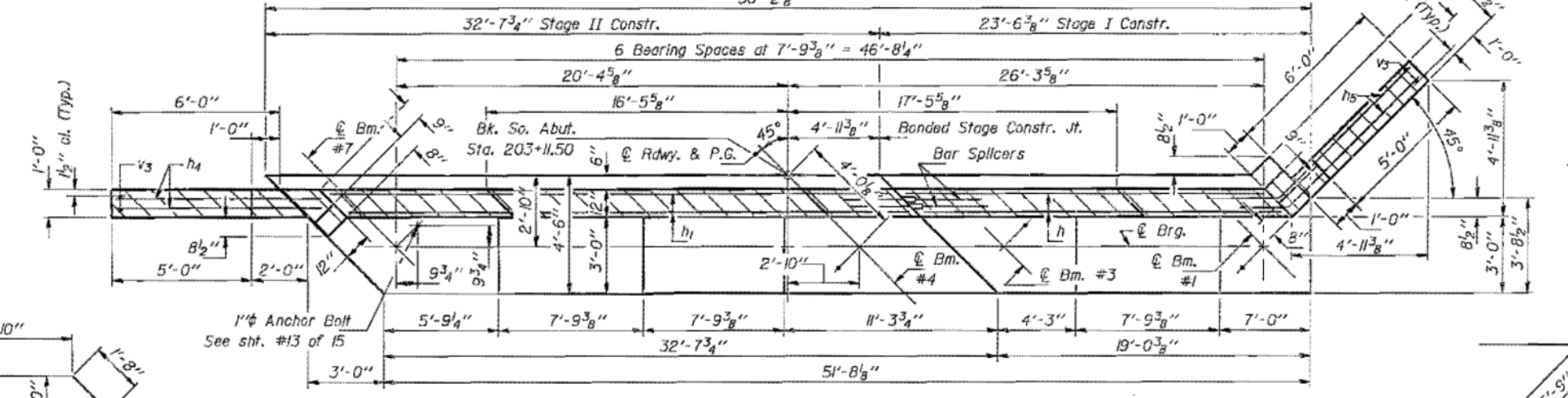
BILL OF MATERIAL

Bar	No.	Size	Length	Shape
h	4	#6	23'-4"	
h1	4	#6	32'-5"	
h2	6	#5	23'-4"	
h3	6	#5	32'-5"	
h4	18	#5	8'-6"	
h5	18	#5	8'-6"	
p	10	#7	23'-4"	
p1	10	#7	32'-5"	
s	43	#5	15'-7"	
s1	12	#5	14'-6"	
u	3	#6	9'-1"	
u1	3	#6	10'-9"	
u2	53	#4	1'-11"	
v	106	#4	6'-0"	
v1	53	#4	3'-8"	
v2	53	#5	3'-0"	
v3	12	#5	14'-4"	
Class X Concrete		Cu. Yd.	45.5	
Reinforcement Bars		Lbs.	4,080	
Steel Piles (HPI0x42)		Lin. Ft.	420	
Steel Test Piles (HPI0x42)		Each	1	

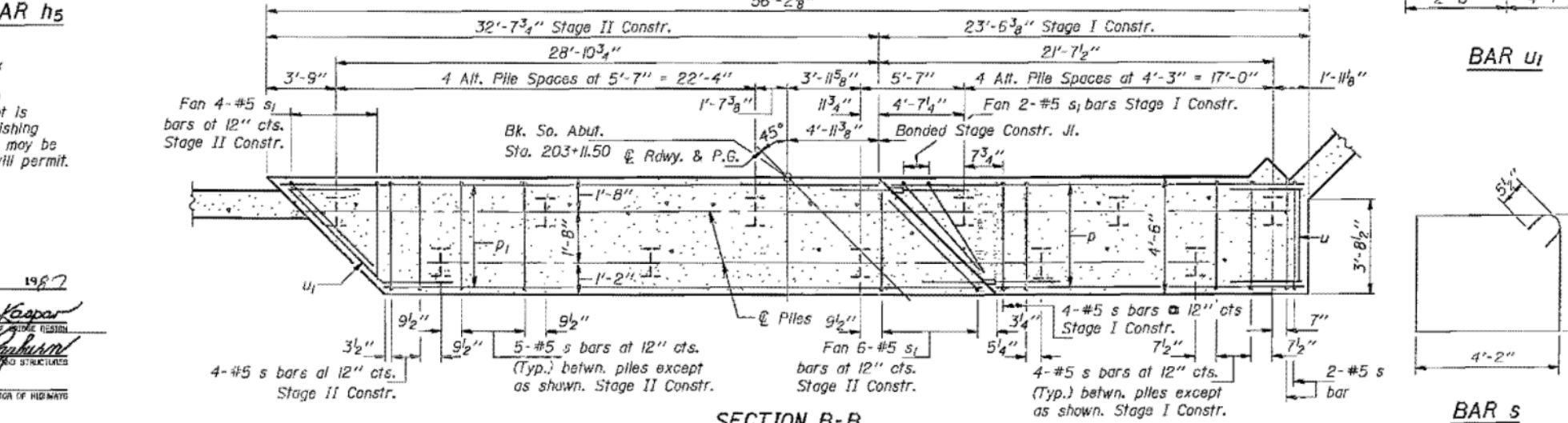
SOUTH ABUTMENT
F.A. RT. 100 SEC. 110BR-1
GRUNDY COUNTY
STA. 203+54.75



ELEVATION
(Looking South)
56'-2 1/2"



TOP VIEW
56'-2 1/2"



SECTION B-B

DESIGNED Victor Veliz
CHECKED Victor Veliz
DRAWN John F. Schneller Jr.
CHECKED P.M. Petrone

EXAMINED Prof. J. Kasper
PASSED James J. Kasper
APPROVED [Signature]
DIRECTOR OF HIGHWAYS