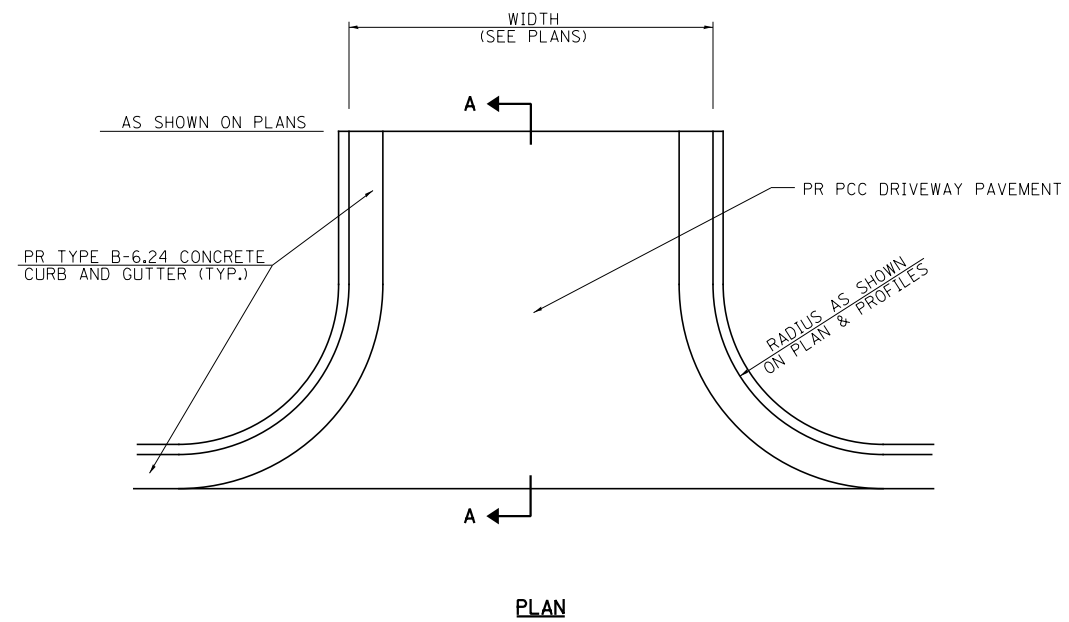
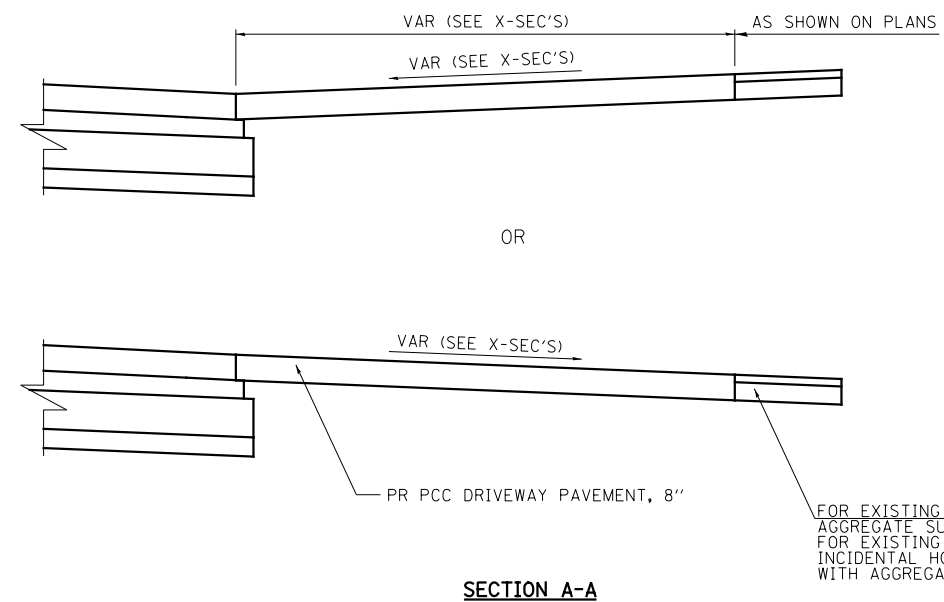


\* 1:4 FROM SOUTH PROJECT LIMITS TO STA. 6186+00.  
 1:6 FROM STA. 6186+00 TO NORTH PROJECT LIMITS.

**ENTRANCE CULVERT DETAIL**



**PLAN**



**SECTION A-A**

**COMMERCIAL ENTRANCES ADJACENT TO CURB & GUTTER WITH CURB & GUTTER**

**ENTRANCE DETAILS**

FILE NAME =	USER NAME = bdecreene	DESIGNED - NPH	REVISED -
V:\3195\66883 (South Section)\CADD Sheets\0366883-sht-details-15.dgn		DRAWN - NPH	REVISED -
	PLOT SCALE = 2.000' / in.	CHECKED - DJD	REVISED -
	PLOT DATE = 8/6/2013	DATE - 7/15/2013	REVISED -

**STATE OF ILLINOIS  
 DEPARTMENT OF TRANSPORTATION**

**IL. RTE. 47  
 DETAILS**

SCALE: N/A SHEET NO. 15 OF 31 SHEETS STA. N/A TO STA. N/A

F.A.P. RTE.	SECTION	COUNTY	TOTAL SHEETS	SHEET NO.
326	(110)R, BR & BR-1	GRUNDY	644	465
CONTRACT NO. 66883				
ILLINOIS FED. AID PROJECT				