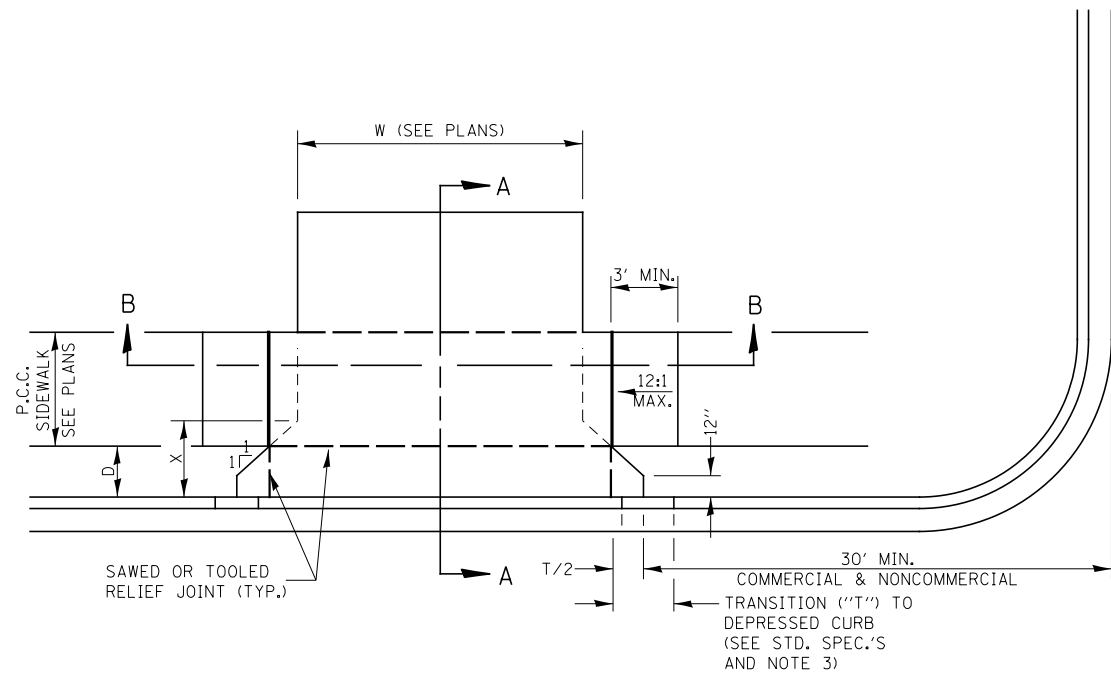


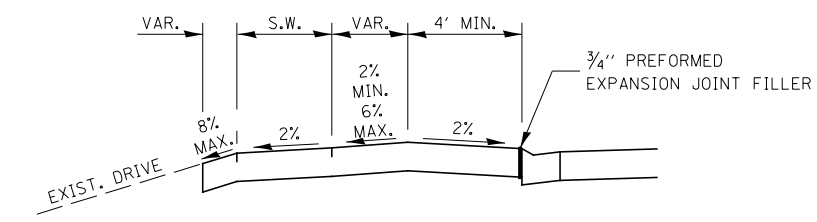
CASE I (D > X)



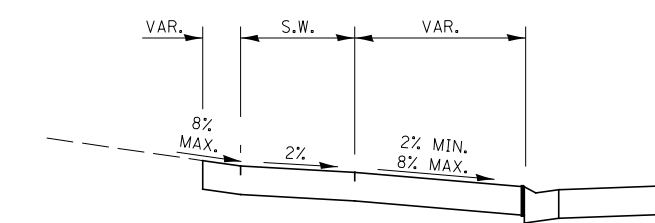
CASE I (D < X)

GENERAL NOTES:

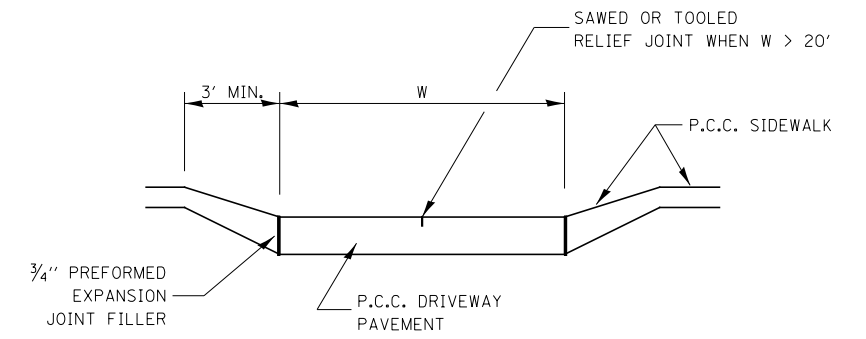
1. X = 7' (NON-COMMERCIAL) X = 15' (COMMERCIAL)
2. COST OF EXPANSION JOINTS AND RELIEF JOINTS SHALL BE INCLUDED IN THE COST OF THE P.C.C. DRIVEWAY PAVEMENT.
3. AS THE DIMENSION "D" APPROACHES ZERO, THE TRANSITION TO DEPRESSED CURB SHALL BE NO STEEPER THAN 12:1



**DEPRESSED ENTRANCE *
SECTION A-A**

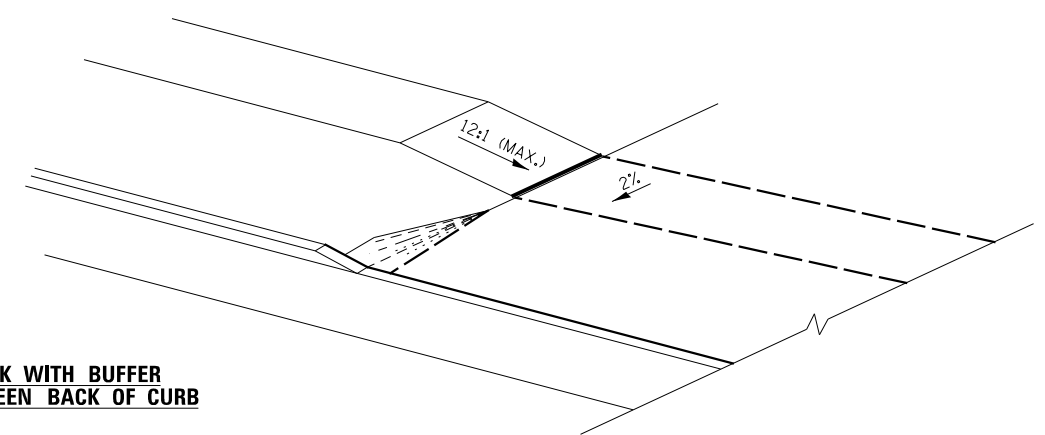


**ELEVATED ENTRANCE *
SECTION A-A**

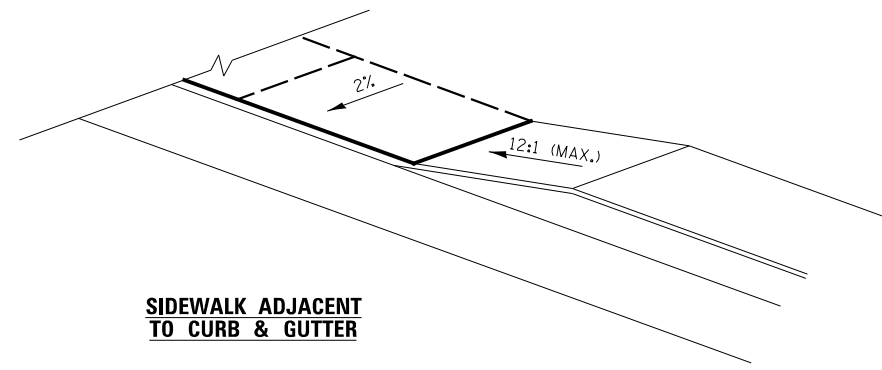


SECTION B-B

**SIDEWALK WITH BUFFER
AREA BETWEEN BACK OF CURB**



**SIDEWALK ADJACENT
TO CURB & GUTTER**



ENTRANCE DETAILS

FILE NAME =	USER NAME = bdecreane	DESIGNED - LDZ	REVISED -
V:\3195\66883 (South Section)\CADD Sheets\0366883-shd-details-16.dgn		DRAWN - SGM	REVISED -
PLOT SCALE = 2.000' / 1" =		CHECKED - DJD	REVISED -
PLOT DATE = 8/6/2013		DATE - 7/15/2013	REVISED -

**STATE OF ILLINOIS
DEPARTMENT OF TRANSPORTATION**

IL. RTE. 47 DETAILS	
SCALE: N/A	SHEET NO. 16 OF 31 SHEETS
STA. N/A	TO STA. N/A

F.A.P. RTE.	SECTION	COUNTY	TOTAL SHEETS	SHEET NO.
326	(110)R, BR & BR-1	GRUNDY	644	466
CONTRACT NO. 66883				
ILLINOIS FED. AID PROJECT				