

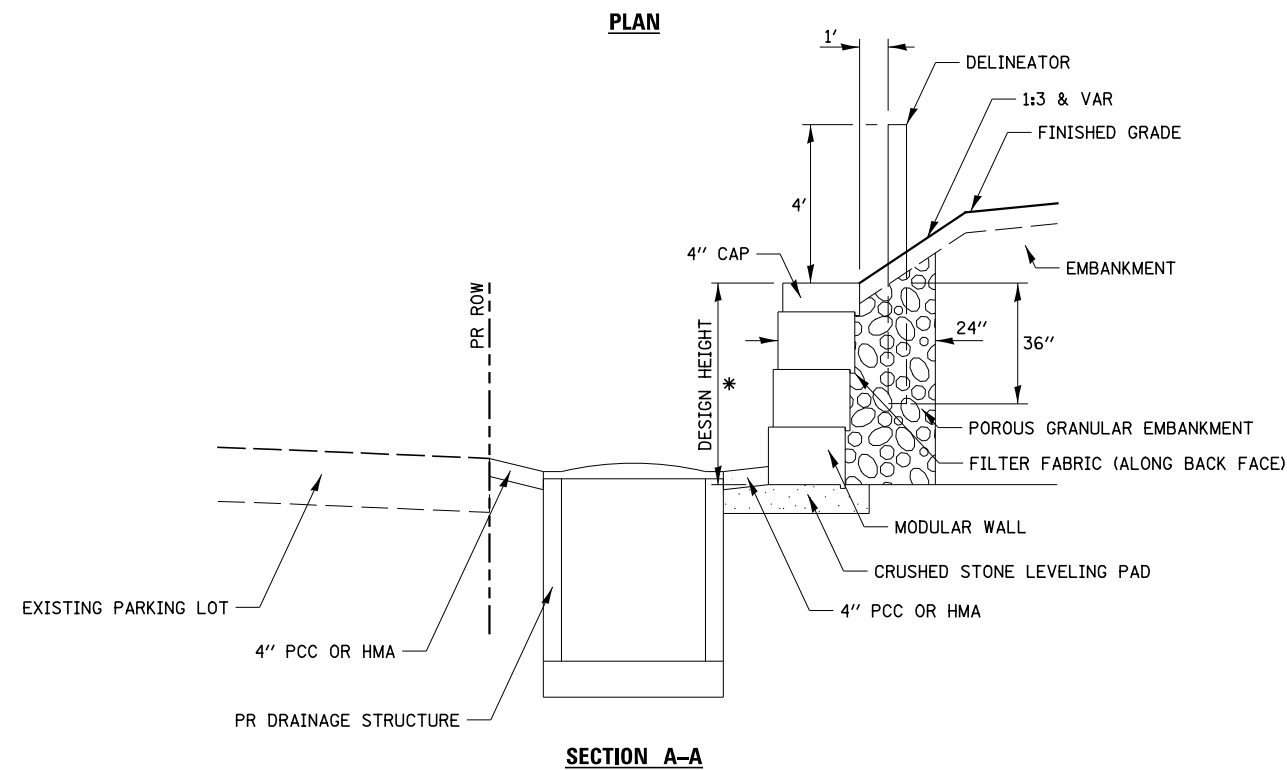
NOTES: USE 8" HIGH BLOCKS EXCEPT WHEN HEIGHT OF WALL IS LESS THAN 24". THEN 4" HIGH BLOCKS SHALL BE USED.

THESE WALLS SHALL BE PAID FOR AT THE CONTRACT UNIT PRICE PER SQUARE FOOT FOR SEGMENTAL CONCRETE BLOCK WALL.

SEE SCHEDULE FOR QUANTITIES

PCC OR HMA AROUND THE INLET WILL BE INCLUDED IN THE COST OF THE INLETS.

FILTER FABRIC SHALL MEET THE REQUIREMENTS OF ARTICLE 1080.03 AND WILL BE INCLUDED IN THE COST OF SEGMENTAL CONCRETE BLOCK WALL.



* WALL HEIGHT WILL CONSIST OF THREE ROWS OF 8" BLOCK AND ONE ROW OF 4" CAP

MODULAR WALL DETAILS

FILE NAME =	USER NAME = bdecreane	DESIGNED - LDZ	REVISED -
V:\3195\66883 (South Section)\CADD Sheets\10366883-shd-details-26.dgn		DRAWN - SGM	REVISED -
	PLOT SCALE = 2.0000' / in.	CHECKED - DJD	REVISED -
	PLOT DATE = 8/6/2013	DATE - 7/15/2013	REVISED -

**STATE OF ILLINOIS
DEPARTMENT OF TRANSPORTATION**

**IL. RTE. 47
DETAILS**

SCALE: N/A SHEET NO. 26 OF 31 SHEETS STA. N/A TO STA. N/A

F.A.P. RTE.	SECTION	COUNTY	TOTAL SHEETS	SHEET NO.
326	(110)R, BR & BR-1	GRUNDY	644	476
CONTRACT NO. 66883				
FED. ROAD DIST. NO. ILLINOIS FED. AID PROJECT				