

Benchmark: Cut "X" on NE corner of handhole cover. Handhole is the middle one of the three located in east side of IL. Rte. 47 across from Prologis Prkwy. entrance. Elev. 554.26

Existing Structure: None. Traffic to be detoured during construction.

**INDEX OF SHEETS**

1. General Plan & Elevation
2. Culvert Details
3. Soil Borings

**DESIGN SPECIFICATIONS**

2012 AASHTO LRFD Bridge Design Specifications, 6th Edition

**LOADING HL-93**

Allow 50#/sq. ft. for future wearing surface.

**DESIGN STRESSES**

**FIELD UNITS**

$f'_c = 3,500$  psi  
 $f_y = 60,000$  psi (Reinforcement)

**PRECAST UNITS**

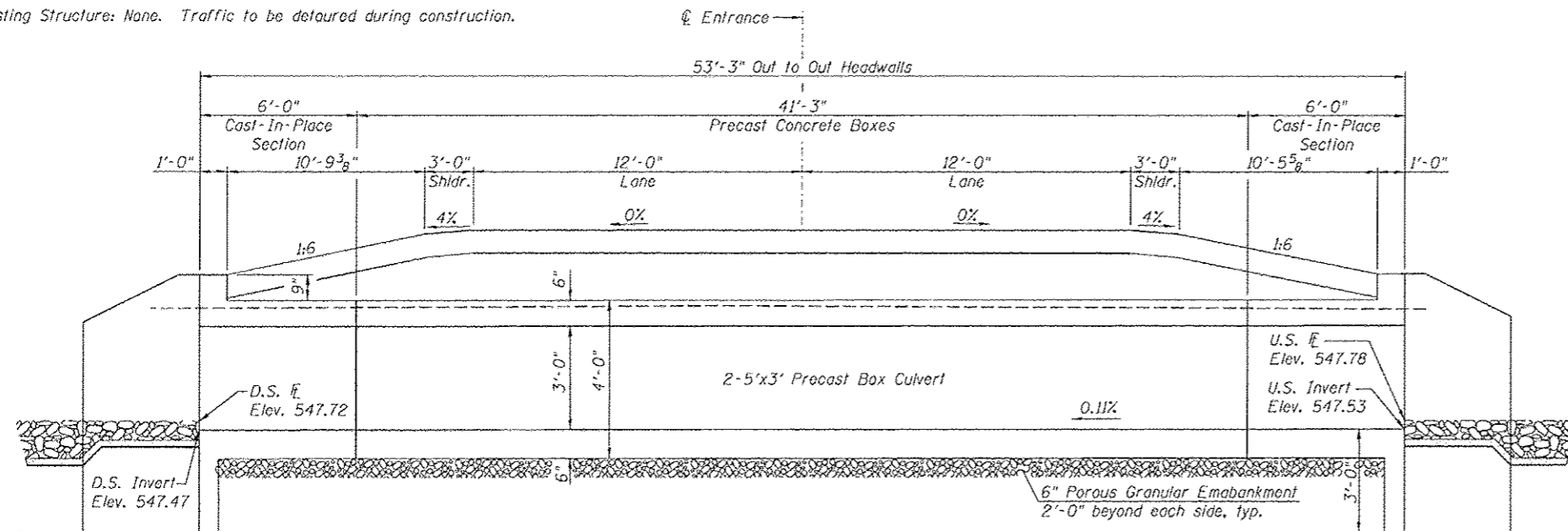
$f'_c = 5,000$  psi  
 $f_y = 60,000$  psi (Reinforcement)  
 $f_y = 65,000$  psi (Welded Wire Fabric)

STATION 6061+50.00  
 BUILT BY  
 STATE OF ILLINOIS  
 F.A.P. RTE. 326  
 SEC. (110)R, BR & BR-1  
 LOADING HL-93  
 STRUCTURE NO. 032-2545

**NAME PLATE**  
 See Std. 515001

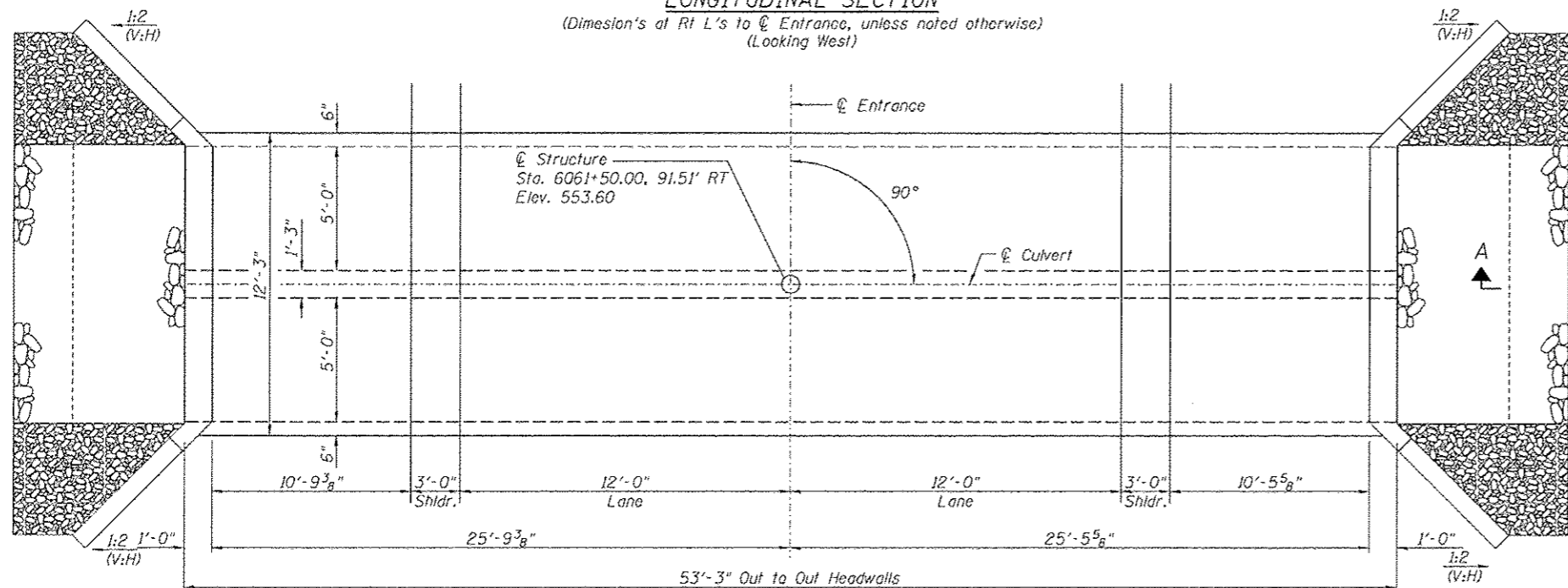
**GENERAL NOTES**

Layout of the slope protection system may be varied to suit ground conditions in the field as directed by the Engineer. The last section of precast culvert on each end shall have reinforcing bars extending from the precast culvert to be incorporated into the cast-in-place end sections as shown on sheet 2. Precast concrete box culverts shall conform to the design requirements of ASTM C1577. See Box Culvert Backfilling Detail within roadway detail sheets for limits of Granular Culvert Backfill.



**LONGITUDINAL SECTION**

(Dimension's at Rt L's to Entrance, unless noted otherwise) (Looking West)



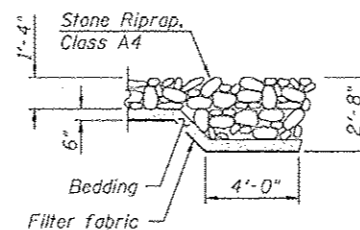
**PLAN**

**TOTAL BILL OF MATERIAL**

ITEM	UNIT	TOTAL
Porous Granular Embankment	Cu. Yd.	16.1
Stone Riprap, Class A4	Sq. Yd.	30
Filter Fabric	Sq. Yd.	30
Reinforcement Bars	Pound	2990
Name Plates	Each	1
Concrete Box Culverts	Cu. Yd.	12.5
Precast Concrete Box Culverts 5'x3'	Foot	82.5

**DESIGN SCOUR ELEVATION TABLE**

Design Scour Elevation (ft.)	U.S. Invert	D.S. Invert
	544.53	544.47



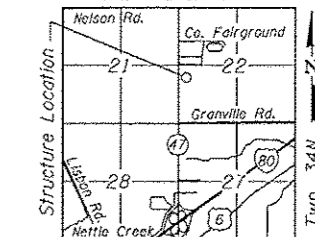
**SECTION A-A**



Vincent P. Tabor 7/15/2013  
 Vincent P. Tabor  
 Licensed Structural Engineer  
 State of Illinois No. 081-007047  
 Expires 11/30/2014

**PROFILE GRADE**

(Along IL. Rte. 47 P.G.)  
 RTE - 3rd. PM



**LOCATION SKETCH**

**GENERAL PLAN & ELEVATION**

**ENTRANCE OVER DRAINAGE DITCH**

F.A.P. RTE. 326-SEC (110)R, BR & BR-1

GRUNDY COUNTY

STATION 6061+50.00

STRUCTURE NO. 032-2545

REVISID -	USER NAME =	DESIGNED - PSS		<b>STATE OF ILLINOIS</b> <b>DEPARTMENT OF TRANSPORTATION</b>	<b>GENERAL PLAN &amp; ELEVATION</b> <b>STRUCTURE NO. 032-2545</b>	F.A.P. RTE.	SECTION	COUNTY	TOTAL SHEETS	SHEET NO.
REVISID -	FILE NAME =	CHECKED - VPT				326	(110)R, BR & BR-1	GRUNDY	644	315
REVISID -	PLOT SCALE =	DRAWN - AJF				CONTRACT NO. 66883				
REVISID -	PLOT DATE =	CHECKED - VPT				ILLINOIS FED. AID PROJECT				