

STATE OF ILLINOIS
DEPARTMENT OF TRANSPORTATION
DIVISION OF HIGHWAYS

**PROPOSED
HIGHWAY PLANS**

VARIOUS ROUTES
SECTION D3 BRIDGE DECK SEALING 2014

BRIDGE DECK SEALING
VARIOUS COUNTIES

C-93-033-13

F.A. RTE.	SECTION	COUNTY	TOTAL SHEETS	SHEET NO.
VAR	*	VARIOUS	11	1
		ILLINOIS	CONTRACT NO. 66C70	

*D3 BRIDGE DECK SEALING 2014

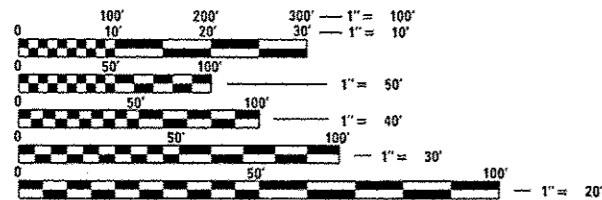
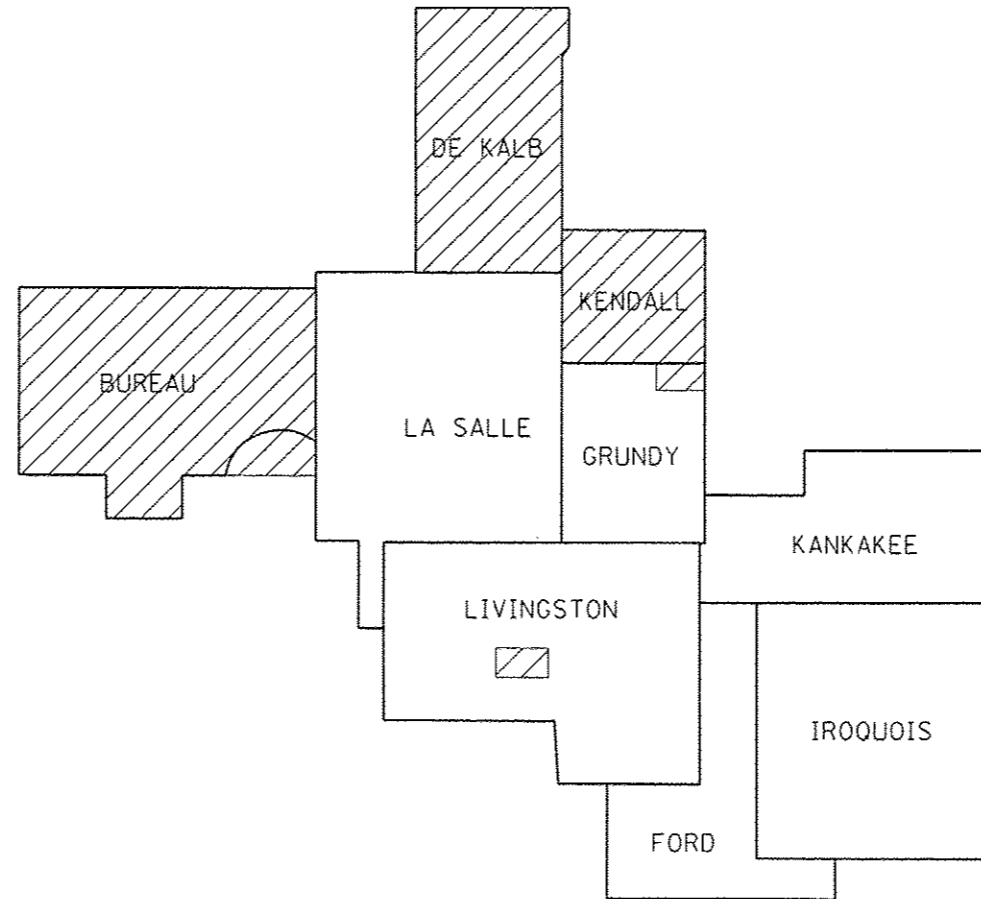
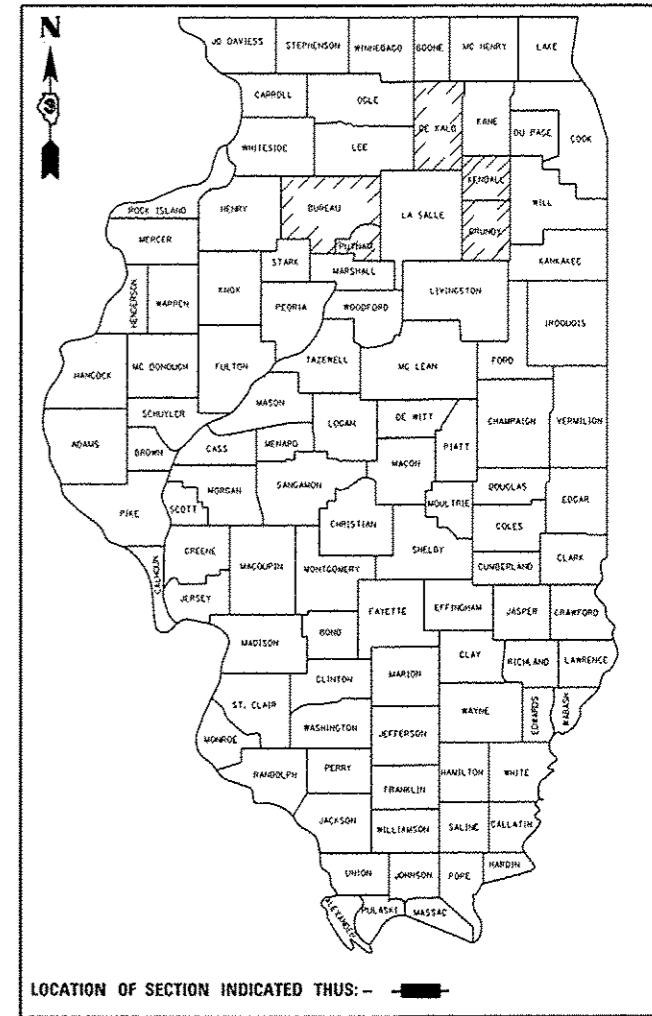
D-93-029-13

INDEX OF SHEETS

- 1 COVER SHEET
- 2 GENERAL NOTES
- 3 SUMMARY OF QUANTITIES
- 4 - 6 BRIDGE SEALING SCHEDULE
- 7 - 10 LOCATION MAPS
- 11 SEALING DETAILS

LIST OF ILLINOIS DOT HIGHWAY STANDARDS

- 000001-06 STANDARD SYMBOLS, ABBREVIATIONS AND PATTERNS
- 701201-04 LANE CLOSURE, 2L, 2W, DAY ONLY, FOR SPEEDS ≥ 45 MPH
- 701400-06 APPROACH TO LANE CLOSURE, FREEWAY/EXPRESSWAY
- 701406-07 LANE CLOSURE, FREEWAY/EXPRESSWAY, DAY OPERATIONS ONLY
- 701411-08 LANE CLOSURE, MULTILANE, AT ENTRANCE OR EXIT RAMP FOR SPEEDS ≥ 45 MPH
- 701456-02 PARTIAL EXIT RAMP CLOSURE FREEWAY/EXPRESSWAY
- 701501-06 URBAN LANE CLOSURE, 2L, 2W, UNDIVIDED
- 701601-08 URBAN LANE CLOSURE, MULTILANE, 1W OR 2W WITH NONTRAVERSABLE MEDIAN
- 701602-06 URBAN LANE CLOSURE, MULTILANE, 2W WITH BIDIRECTIONAL LEFT TURN LANE
- 701606-08 URBAN LANE CLOSURE, MULTILANE, 2W WITH MOUNTABLE MEDIAN
- 701901-02 TRAFFIC CONTROL DEVICES



FULL SIZE PLANS HAVE BEEN PREPARED USING STANDARD ENGINEERING SCALES. REDUCED SIZED PLANS WILL NOT CONFORM TO STANDARD SCALES. IN MAKING MEASUREMENTS ON REDUCED PLANS, THE ABOVE SCALES MAY BE USED.

J.U.L.I.E.
JOINT UTILITY LOCATION INFORMATION FOR EXCAVATION
1-800-892-0123
OR 811

PROJECT ENGINEER: CRAIG REED, P.E. 815-434-8420
UNIT CHIEF: BRAD DUNCAN, P.E. 815-434-8562
DISTRICT NO. (815)-434-6131
CONTRACT NO. 66C70

STATE OF ILLINOIS
DEPARTMENT OF TRANSPORTATION
DIVISION OF HIGHWAYS

SUBMITTED August 13 2013
Paul A. Costello
DEPUTY DIRECTOR OF HIGHWAYS, REGION ENGINEER

October 4 2013
John D. Baranelli, P.E.
ENGINEER OF DESIGN AND ENVIRONMENT

October 4 2013
Omer Osman, P.E.
DIRECTOR OF HIGHWAYS, CHIEF ENGINEER

**PRINTED BY THE AUTHORITY
OF THE STATE OF ILLINOIS**

GENERAL NOTES

ANY REFERENCE TO A STANDARD IN THESE PLANS SHALL BE INTERPRETED TO MEAN THE EDITION AS INDICATED BY THE SUBNUMBER SHOWN IN THE LIST OF STANDARDS OR THE COPY INCLUDED IN THESE PLANS.

THE ENGINEER WILL BE THE SOLE JUDGE CONCERNING CURING TIME FOR THE SEALER.

STATE OF ILLINOIS
DEPARTMENT OF TRANSPORTATION
DISTRICT THREE

PREPARED BY: *Dana Brown*
DISTRICT STUDIES & PLANS ENGINEER

DATE: 8-12-13

EXAMINED BY: *Herbert*
DISTRICT CONSTRUCTION ENGINEER

Wayne L. Phillips
DISTRICT MATERIALS ENGINEER

Steve A. Wheeler
DISTRICT OPERATIONS ENGINEER

FILE NAME *	USER NAME * duncanbd	DESIGNED -	REVISED -	STATE OF ILLINOIS DEPARTMENT OF TRANSPORTATION	SCALE:	SHEET	OF	SHEETS	STA.	TO STA.	F.A. RTE.	SECTION	COUNTY	TOTAL SHEETS	SHEET NO.	
c:\pwwork\pwwork\duncanbd\0324748\03	66C70-shr-cover.dgn	DRAWN -	REVISED -								VAR	*	VARIOUS	11	2	
	PLOT SCALE * 100.0000 ' / in.	CHECKED -	REVISED -								*03 BRIDGE DECK SEALING 2014		CONTRACT NO. 66C70			
	PLOT DATE * 8/7/2013	DATE -	REVISED -								ILLINOIS FED. AID PROJECT					

000 # 1 0012

CONSTR. CODE

100% STATE
BRIDGE
0014

CODE NO.	ITEM	UNIT	TOTAL QUANTITY	
	<i>BRIDGE DECK</i>			
X5870015	CONCRETE SEALER	SO FT	1177683	1177683
67100100	MOBILIZATION	L SUM	1	1
70100420	TRAFFIC CONTROL AND PROTECTION, STANDARD 701411	EACH	8	8
70100450	TRAFFIC CONTROL AND PROTECTION, STANDARD 701201	L SUM	1	1
70100700	TRAFFIC CONTROL AND PROTECTION, STANDARD 701406	L SUM	1	1
70100825	TRAFFIC CONTROL AND PROTECTION, STANDARD 701456	L SUM	1	1
70102620	TRAFFIC CONTROL AND PROTECTION, STANDARD 701501	L SUM	1	1
70102625	TRAFFIC CONTROL AND PROTECTION, STANDARD 701606	L SUM	1	1
70102630	TRAFFIC CONTROL AND PROTECTION, STANDARD 701601	L SUM	1	1
70102632	TRAFFIC CONTROL AND PROTECTION, STANDARD 701602	L SUM	1	1

10

FILE NAME *	USER NAME * duncanbd	DESIGNED -	REVISED -	STATE OF ILLINOIS DEPARTMENT OF TRANSPORTATION	SUMMARY OF QUANTITIES	F.A. RTE.	SECTION	COUNTY	TOTAL SHEETS	SHEET NO.
c:\pav\work\pripdat\duncanbd\0324748\036670-akt-500.dgn	DRAWN -	REVISED -	VAR				VARIOUS	11	3	
PLOT SCALE * 100.0000 * / in.	CHECKED -	REVISED -	*D3 BRIDGE DECK SEALING 2014			CONTRACT NO. 66C70				
PLOT DATE * 8/12/2013	DATE -	REVISED -	[ILLINOIS] FED. AID PROJECT							
				SCALE:	SHEET NO. OF SHEETS	STA. TO STA.				

Rev.

CONCRETE SEALER									
STRUCTURE NUMBER	FACILITY CARRIED	APPROXIMATE LOCATION	FEATURE CROSSED	DECK WIDTH	PARAPET SURFACE	MEDIAN SURFACE	DECK LENGTH	SEAL AREA	TRAFFIC CONTROL AND PROTECTION STANDARD
				FEET	FEET	FEET	FEET	SQ FT	
BUREAU INTERSTATE									
006-0001	I-80 EASTBOUND	1.04 E/HENRY CO LN	KING CREEK	40.2	7.4		98.2	4,674	701406
006-0002	I-80 WESTBOUND	1.05 E/HENRY CO LN	KING CREEK	40.2	7.4		98.2	4,674	701406
006-0003	I-80 EASTBOUND	1.51 E/HENRY CO LN	BARBARA DITCH	40.2	7.4		73.5	3,499	701406
006-0004	I-80 WESTBOUND	1.52 E/HENRY CO LN	BARBARA DITCH	40.2	7.4		73.5	3,499	701406
006-0005	I-80 EASTBOUND	3.44 E/HENRY CO LN	ABBOTT DITCH	40.2	7.4		178	8,473	701406
006-0006	I-80 WESTBOUND	3.45 E/HENRY CO LN	ABBOTT DITCH	40.2	7.4		178	8,473	701406
006-0007	I-80 EASTBOUND	3.81 E/HENRY CO LN	COAL CREEK	40	7.6		176	8,378	701406
006-0008	I-80 WESTBOUND	3.82 E/HENRY CO LN	COAL CREEK	40	7.6		176	8,378	701406
006-0009	I-80 EASTBOUND	1.0 MI. W. OF IL 40	DRAINAGE DITCH	40.5	7.6		136	6,542	701406
006-0010	I-80 WESTBOUND	1.0 MI. W. OF IL 40	DRAINAGE DITCH	40.5	7.6		136	6,542	701406
006-0016	I-80 WESTBOUND	2 MI N WYANET	WEST BUREAU CREEK	34	7.4		43	1,780	701406
006-0017	I-80 EASTBOUND	2 MI N WYANET	WEST BUREAU CREEK	34	7.4		94.8	3,925	701406
006-0038	I-180 NORTHBOUND	4 MI E. OF PRINCETON	I-80	26.5	4.8		273.2	8,551	701456 *
006-0039	I-180 SOUTHBOUND	4 MI E. OF PRINCETON	I-80	26.5	4.8		272.2	8,520	701456 *
006-0041	I-180 SOUTHBOUND	3.4 MI S JCT FAI 80	EAST BUREAU CREEK	39	5		150.1	6,604	701406 *
006-0042	I-180 NORTHBOUND	3.4 MI S JCT FAI 80	EAST BUREAU CREEK	39	5		147.5	6,490	701406 *
006-0043	I-180 NORTHBOUND	1.1 MI N ILL 26	BRUSH CREEK	39	5		191	8,404	701406 *
006-0044	I-180 SOUTHBOUND	1.1 MI N ILL 26	BRUSH CREEK	39	5		191	8,404	701406 *
006-0045	I-180 SOUTHBOUND	2 MI NW BUREAU JCT	ILL 26	39	5		212.5	9,350	701406, 701411 *
006-0046	I-180 NORTHBOUND	2 MI NW BUREAU JCT	ILL 26	39	5		212.5	9,350	701406, 701411 *
006-0047	I-180 SOUTHBOUND	0.5 MI S JCT ILL 26	EAST BUREAU CREEK	39	5		211.1	9,288	701406, 701411 SB *
006-0048	I-180 NORTHBOUND	0.5 MI S JCT ILL 26	EAST BUREAU CREEK	39	5		211.1	9,288	701406 *
006-0049	I-180 SOUTHBOUND	0.7 MI S ILL 26	IAIS RR ,I & M CANAL	39	5		716.8	31,539	701406 *
006-0050	I-180 NORTHBOUND	0.7 MI S ILL 26	IAIS RR, I & M CANAL	39	5		716.8	31,539	701406 *
006-0051	I-180 SOUTHBOUND	1.2 M S JCT ILL 26	BUREAU CREEK	39	5		371.5	16,346	701406 *
006-0052	I-180 NORTHBOUND	1.2 MI S JCT ILL 26	BUREAU CREEK	39	5		371.5	16,346	701406 *
006-0053	I-180 SOUTHBOUND	1.4 MI S JCT ILL 26	BOTTOM RD FAS 246	39	5		176.3	7,757	701406 *
006-0054	I-180 NORTHBOUND	1.4 MI S JCT ILL 26	BOTTOM RD FAS 246	39	5		176.3	7,757	701406 *
006-0055	I-180 EASTBOUND	3 MI W HENNEPIN	FAP 318 NB	39	5		328.4	14,450	701406 *
006-0056	I-180 EASTBOUND	3 MI W HENNEPIN	I-180 RMP 10.01	39	5		234	10,296	701406 *
006-0057	I-180 EASTBOUND	2 MI SW BUREAU JCT.	IL 29(SBI29A)&IAIS RR	63	5		393	26,724	701406, 701411 *
006-0058	I-180 WESTBOUND	2 MI. SW BUREAU JCT.	IL 29(SBI29A)&IAIS RR	69.7	5		383.8	28,670	701406, 701411 *
006-0059	I-180 WESTBOUND	1.5 MI W HENNEPIN	ILL 26 & BUREAU CRK.	39	5		401	17,644	701406, 701411 *
006-0060	I-180 EASTBOUND	1.5 MI W HENNEPIN	ILL 26 & BUREAU CRK.	39	5		401	17,644	701406 *
006-0151	I-80 EASTBOUND	2 MI. W. OF IL 26	BUREAU CREEK	40	7.4		292	13,841	701406
006-0152	I-80 WESTBOUND	2 MI. W. OF IL 26	BUREAU CREEK	40	7.4		292	13,841	701406
006-0165	I-80 EASTBOUND	1.7 MI E JCT ILL 89	SPRING CREEK	40	7.6		170	8,092	701406
006-0166	I-80 WESTBOUND	1.7 MI E JCT ILL 89	SPRING CREEK	40	7.6		170	8,092	701406
006-0167	I-80 EASTBOUND	1.9 MI E JCT ILL 89	BN RR	40	7.6		154.5	7,354	701406
006-0168	I-80 WESTBOUND	1.9 MI E JCT ILL 89	BN RR	40	7.6		154.5	7,354	701406
006-0170	I-80 EASTBOUND	4.6 MI E JCT FAI 180--MP 65.6	CREEK & TR 352	40	7.6		310.1	14,761	701406
006-0171	I-80 WESTBOUND	4.6 MI E JCT FAI 180--MP 65.6	CREEK & TR 352	40	7.6		356.9	16,988	701406
006-0172	I-80 EASTBOUND	1.2 MI E JCT FAI 180--MP 62.2	E. BUREAU CREEK	40.3	7.6		172.1	8,244	701406
006-0173	I-80 WESTBOUND	1.2 MI E JCT FAI 180--MP 62.2	E. BUREAU CREEK	40.3	7.6		172.1	8,244	701406
006-0174	I-80 EASTBOUND	1.8 MI W ILL 89--MP 68.3	NEGRO CREEK	40.8	7.6		221	10,696	701406
006-0175	I-80 WESTBOUND	1.8 MI W ILL 89--MP 68.3	NEGRO CREEK	40.8	7.6		221	10,696	701406

* STRUCTURE HAS EXISTING PCC OVERLAY, ADDITIONAL DRYING TIME BY BE REQUIRED

FILE NAME =	USER NAME = duncanbd	DESIGNED -	REVISED -	STATE OF ILLINOIS DEPARTMENT OF TRANSPORTATION	SEALING SCHEDULE				F.A. RTE.	SECTION	COUNTY	TOTAL SHEETS	SHEET NO.	
et:\pw\work\p1dot\duncanbd\0324748\03670-shit-schedule.dgn		DRAWN -	REVISED -		SCALE:	SHEET NO.	OF	SHEETS	STA.	TO STA.	VAR	ILLINOIS	FED. AID PROJECT	
		CHECKED -	REVISED -								•	VARIOUS	11	4
		DATE -	REVISED -								•D3 BRIDGE DECK SEALING 2014	CONTRACT NO. 66C70		

CONCRETE SEALER									
STRUCTURE NUMBER	FACILITY CARRIED	APPROXIMATE LOCATION	FEATURE CROSSED	DECK WIDTH	PARAPET SURFACE	MEDIAN SURFACE	DECK LENGTH	SEAL AREA	TRAFFIC CONTROL AND PROTECTION STANDARD
				FEET	FEET	FEET	FEET	SQ FT	
BUREAU									
NON-INTERSTATE									
006-0083	ILL ROUTE 29 AND 26	0.3 MI N JCT ILL 26	BUREAU CR OVERFLOW	34	7.4		308	12,751	701201
006-0084	ILL ROUTE 29	0.1 MI S JCT ILL 26	BUREAU CREEK	35.9	7.4		218	9,439	701201
006-0085	FAP 318 NB	3 MI W OF HENNEPIN	I-180 EX RMP 1001	39	5		372.7	16,399	701406 *
006-0086	ILL 40	3.1 MI S JCT ILL 92	WALNUT SPECIAL DITCH	40	7.4		42.8	2,029	701201
006-0090	ILL 40	0.4 MI S JCT I-80	I&M CANAL	32	7.4		173.8	6,848	701201
006-0096	ILL 92	1.0 MI E ILL 172	I&M FEEDER CANAL	30	1.7		89.5	2,837	701201
006-0097	ILL 92	1.4 MI W JCT ILL 40	GREEN RIVER	32	7.4		170	6,698	701201
006-0101	IL 92	.7 MI W VAN ORIN	BR MASTERS CR	32	7.4		60.3	2,376	701201
006-0112	FAS 188	2 MI N US6 @ WYANET	I-80	26	1.83		216.7	6,031	701201
006-0114	TISKILWA SPUR	0.3 MI N TISKILWA	BUREAU CREEK	32	7.4		379	14,933	701201
006-0116	FAS 244/BACKBONE RD	1.8 MI W JCT ILL 26	I-80	28	7.6		208.5	7,423	701201
006-0123	TR 148	3.0 MI. E. OF IL 40	I-80	24	1.83		216.7	5,597	701201
006-0124	TR 188	4.3 MI W JCT ILL 26	I-80	24	1.83		235	6,070	701201
006-0125	TR 241	0.9 MI S JCT FAI 80	I-180	30.5	5		277.6	9,855	701201
006-0126	TR 281	1.4 MI N ILL 26	I-180	28.5	5		314	10,519	701201
006-0127	TR 322(2600E)	1.6 MI E JCT I-180	I-80	24	1.83		217.5	5,618	701201
006-0128	TR 333	2.5 MI N JCT ILL 29	I-180	26.5	5		282.9	8,911	701201
006-0129	TR 364 (3000E)	1.4 MI N SEATONVILLE	I-80	24	1.83		250	6,458	701201
006-0133	TR 370 (3100E)	2.2 MI W ILL 89	I-80	24	1.83		268.3	6,930	701201
006-0135	US RT 34	1.1MI NE JCT ILL 26	BN RR	42.5	5		348.8	16,568	701201 *
006-0137	US 6	1.3 MI E OF I-180	E BUREAU CREEK	30	7.4		156	5,834	701201
006-0138	ILL 40	SOUTH EDGE OF BUDA	BN RR	42.5	5		349	16,578	701501
006-0142	ILL 89	0.8 MI S ARLINGTON	BRANCH OF BRUSH CR.	32	1.8		63.5	2,146	701201
006-0143	ILL 29	NORTHEAST EDGE DEPUE	NEGRO CREEK	32	7.4		153.3	6,040	701201
006-0144	US RT 6	IN SEATONVILLE	NEGRO CREEK	32	7.4		105.3	4,149	701201
006-0145	ILL 40	1.2 MI S OF BUDA	COAL CREEK	32	7.4		118	4,649	701201
006-0148	IL 26 & IL 29	S EDGE BUREAU JCT.	HENNEPIN CANAL	32	7.4		168	6,619	701501
006-0149	ILL 92	1.6 MI. W. US 34	BUREAU CREEK	32	7.4		306	12,056	701201
006-0153	IL 92	3.3 MI. W. OF US 34	STREAM	32	7.4		82.1	3,235	701201
006-0154	US 6/34	1 MI. W OF PRINCETON	BIG BUREAU CREEK	40	7.4		235.2	11,148	701201
006-0155	IL 29	EAST EDGE OF DEPUE	DRAINAGE DITCH	32	7.4		116	4,570	701201
006-0156	IL 40	3.5 MI. N. OF I-80	HICKORY CREEK	40	7.4		74.1	3,512	701201
006-0157	IL 40	3 MI. N. OF I-80	DITCH # 4	40	7.4		65	3,081	701201
006-0158	US 6	E EDGE SPRING VALLEY	SPRING CR & ABANDN RR	72	7.4		205	16,277	701606
006-0159	IL 26	0.3 MI. NW OF I-180	E. BUREAU CREEK	44	7.6	14.2	317.4	20,885	701201
006-0160	IL 92	1 MI. E. OF WALNUT	UNNAMED STREAM	32	7.4		78.5	3,093	701201
006-0161	US 6 & 34	AT EAST EDGE WYANET	WEST BUREAU CREEK	36	7.4		150	6,510	701201
006-0162	IL 26	N. EDGE OF PRINCETON	I-80	66.5	7.6	9	216.5	17,991	701601
006-0163	NEW BEDFORD RD	0.6 MI W JCT IL 40	GREEN RIVER	28	7.6		165	5,874	701201
006-0164	IL 89	0.60 MI S OF US 6	RI RAILROAD	30	4.6		230	7,958	701501
006-0169	US RT 6	W OF DEPUE SPUR	BRUSH CREEK	32	7.6		127	5,029	701201
006-0178	ILL 89	S. EDGE OF LADD	I-80	56	7.6	7	214.6	15,151	701606
006-0181	IL 89	0.5 MI S JCT US 34	PIKE CREEK	32	7.6		145	5,742	701201
006-0182	US 34	0.5 MI SW LAMOILLE	PIKE CREEK	32	7.6		105	4,158	701201
BUREAU COUNTY SUB-TOTAL								864,576	
DEKALB COUNTY									
NON-INTERSTATE									
019-0005	ILL 23	0.7 MI S JCT ILL 72	CC & PAC. RR	48			142.8	6,854	701201 *
019-0012	ILL 64	1.5 MI W JCT ILL 23	S BR KISHWAUKEE RIV.	34	7.4		121.5	5,030	701201
019-0021	ILL 72	0.1 MI E OGLE CO	STREAM	32	3		40.2	1,407	701201
019-0026	ILL 72	W EDGE GENOA	S BR KISHWAUKEE RIV.	36	7.4		230	9,982	701201
019-0030	ILL 72	1.3 MI W OF KIRKLAND	OWENS CREEK	32	7.4		164	6,462	701201
019-0032	US 30	.5 MI E OF SHABBONA	BN RR	32	7.4		299.8	11,812	701201
019-0033	ILL 72	.5 MI W KANE CO LN	COON CREEK	34	7.4		82	3,395	701201
019-0034	ILL 72	1.5 MI W KINGSTON	LEE SLOUGH	32	7.4		73.5	2,896	701201
019-0035	ILL 23	1 MI N JCT ILL 72	DEER CREEK TRIB.	32.7			39.7	1,298	701201
019-0036	US 30	.5 MI W HINCKLEY	LITTLE ROCK CREEK	40	7.4		137	6,494	701201
019-0037	ILL 72	3 MI NW OF KIRKLAND	DRAINAGE DITCH	32	7.4		55	2,167	701201
019-0038	IL 72	0.3 MI. W. KIRKLAND	UNNAMED CREEK	32	7.4		40.7	1,604	701201
019-0039	US 34	1.1 MI. W. SANDWICH	SOMONAUK CREEK	40	7.4		126.5	5,996	701201
019-0040	IL 64	5 MI. E. OGLE CO LN	OWENS CREEK	36	7.4		69	2,995	701201
019-0041	IL 38	1.5 MI. E. CRESTON	E. BR. KILBUCK CREEK	40	7.4		75	3,555	701201
019-0043	ILL 23	0.4 MI N JCT ILL 64	E BR,S BR KISHW* RIV	59	7.4		120.6	8,008	701501
019-0044	IL 38	0.6 MI W JCT IL 23	S BR KISHWAUKEE RIV.	59	1.6		118	7,151	701602
019-0045	IL 38	1.9 MI E SOMONAUK RD	UNION DITCH #1	40	7.6		61.5	2,927	701201
019-0047	ILL 72	W EDGE OF KIRKLAND	SOO LINE/IC & E RR	32	7.6		163.5	6,475	701201
DEKALB COUNTY SUB-TOTAL								96,507	

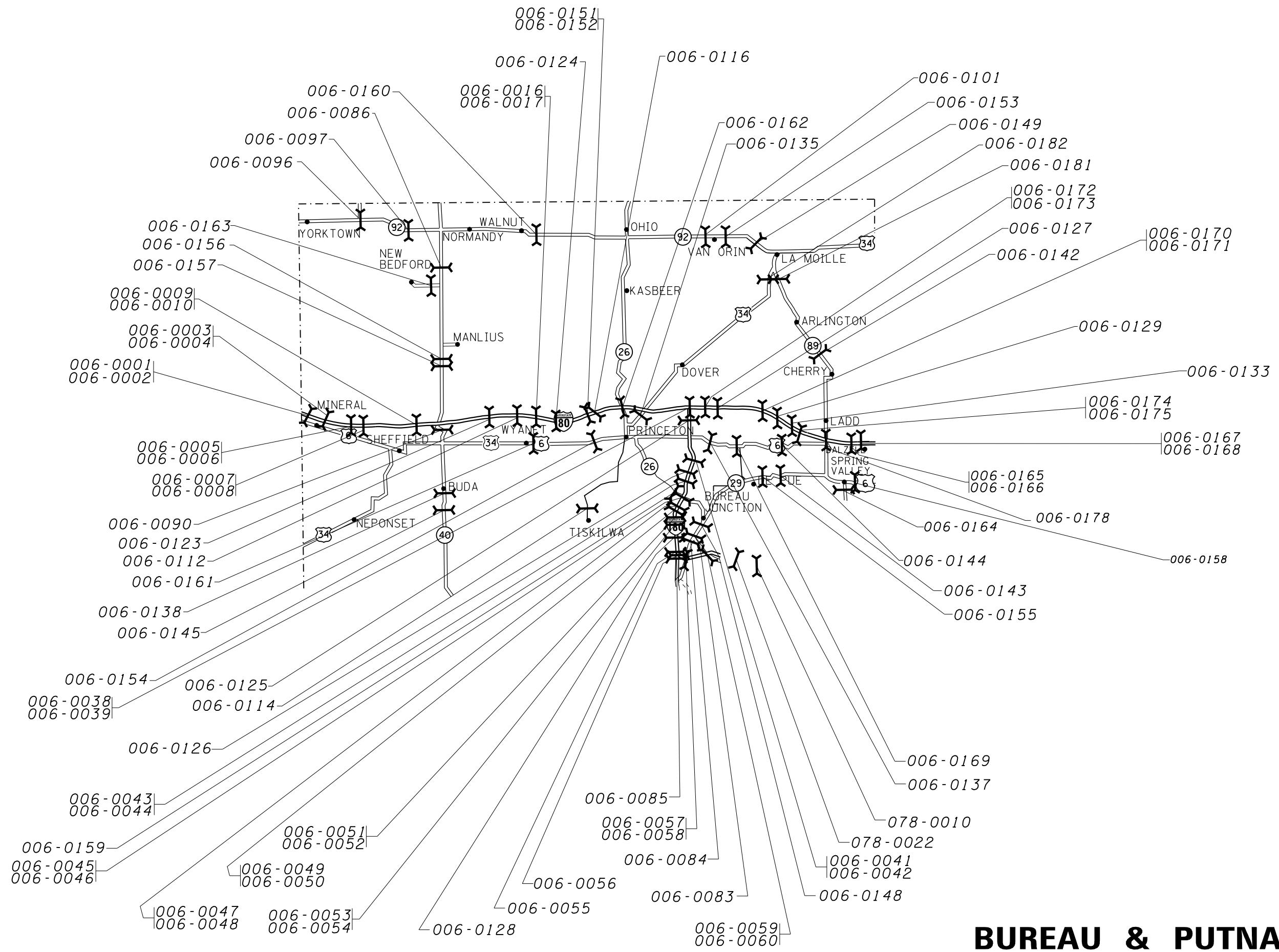
* STRUCTURE HAS EXISTING PCC OVERLAY, ADDITIONAL DRYING TIME BY BE REQUIRED

FILE NAME =	USER NAME = duncanbd	DESIGNED -	REVISED -	STATE OF ILLINOIS DEPARTMENT OF TRANSPORTATION	SEALING SCHEDULE				F.A. RTE.	SECTION	COUNTY	TOTAL SHEETS	SHEET NO.
et:\pw\work\p1dot\duncanbd\0324748\03670-shit-schedule.dgn		DRAWN -	REVISED -		SCALE:	SHEET	OF	SHEETS	STA.	TO STA.	VARIOUS	11	5
		CHECKED -	REVISED -		*D3 BRIDGE DECK SEALING 2014 CONTRACT NO. 66C70								
		DATE -	REVISED -		ILLINOIS FED. AID PROJECT								

CONCRETE SEALER									
STRUCTURE NUMBER	FACILITY CARRIED	APPROXIMATE LOCATION	FEATURE CROSSED	DECK	PARAPET	MEDIAN	DECK	SEAL	TRAFFIC CONTROL AND PROTECTION STANDARD
				WIDTH	SURFACE	SURFACE	LENGTH	AREA	
				FEET	FEET	FEET	FEET	SQ FT	
KENDALL COUNTY NON-INTERSTATE									
047-0014	US 52	1.09 MI W ILL 47	LISBON CREEK	40			29.9	1,196	701201
047-0049	US 34	0.6 MI W OF ILL 47	BLACKBERRY CREEK	40	7.4		108.1	5,124	701501
047-0050	US 34	US 34 & FOX RIVER	FOX RIVER	54	7.4	2.8	343	22,021	701601
047-0052	US 52	9 M W OF IL 47	ROODS CREEK	32	7.4		80.3	3,164	701201
047-0053	IL 47	1 M N OF US 34	BLACKBERRY CK.	44	7.4		137.7	7,078	701501
047-0054	US 34	E LIMITS OF OSWEGO	WAUBANSEE CREEK	55.1	7.4		102.5	6,406	701606
047-0055	US 34	0.5 MI E OF OSWEGO	WAUBANSEE CREEK	66.4	7.4		66.5	4,908	701606
047-0056	ILL 71	.5MI SW NEWARK	ROADS CR	40	7.4		72.2	3,422	701201
047-0058	ILL 126	3.12 MI E IL 71	E. BRANCH MORGAN CRK	35.4	7.4		32.3	1,382	701201
047-0059	ILL 71	2.20MI E OF ILL 126	MORGAN CREEK	39.3	7.4		88.5	4,133	701201
047-0060	US 52	6.5 MI E OF ILL 47	E BR AUX SABLE CR	31.5	7.4		146.7	5,707	701201
047-0061	US 34	1.1 MI E DEKALB CO.	LITTLE ROCK CREEK	56	7.6		142	9,031	701201
047-0062	IL 25	IL 25 & WAUBANSEE CR	WAUBANSEE CREEK	44	4.6		106	5,152	701501
KENDALL COUNTY SUB-TOTAL								78,723	
GRUNDY INTERSTATE									
032-0100	I-80 (EB & WB)	MINOOKA INTERCHANGE	FAS285/CH5/RIDGE RD	118.2	7.4	7.7	165	21,995	701406, 701411 WB, 701411 EB
032-0101	I-80 (EB & WB)	4.63 MI E OF ILL 47	WALLEY RUN CR	118.2	7.4	7.7	86.9	11,584	701406
032-0102	I-80 (EB & WB)	7.73 MI E OF ILL 47	AUX SABLE CRK	118.2	7.4	7.7	177.2	23,621	701406
032-0104	I-80 (EB & WB)	3.93 MI E OF ILL 47	COLLINS RUN CREEK	121.7	7.4	7.7	104.7	14,323	701406
GRUNDY COUNTY NON-INTERSTATE									
032-0059	TR 150 (BROWN RD)	4.48 MI E OF ILL 47	I-80	24	1.6		230	5,888	701201
032-0065	WABENA ST-MINOOKA	0.5 M E MINOOKA INT	I-80	24	1.6		200	5,120	701501
GRUNDY COUNTY SUB-TOTAL								82,530	
PUTNAM COUNTY NON-INTERSTATE									
078-0010	ILL 71	JCT I-180 AND ILL 26	I-180	70.5	6.6	5.2	273.8	22,534	701601 *
078-0022	CH 1	0.17 MI N OF ILL 26	I-180	32.5	2.4		251.8	8,788	701201
PUTNAM COUNTY SUB-TOTAL								31,322	
LIVINGSTON COUNTY INTERSTATE									
053-0127	I-55 NORTHBOUND	0.5 MI. N OF IL 116	ABANDONED ICG RR BED	38.5	5		148.8	6,473	701406 *
053-0129	I-55 NORTHBOUND	WEST OF PONTIAC	VERMILION RIVER	38.5	5		403.5	17,552	701406 *
LIVINGSTON COUNTY SUB-TOTAL								24,025	
TOTAL								1,177,683	

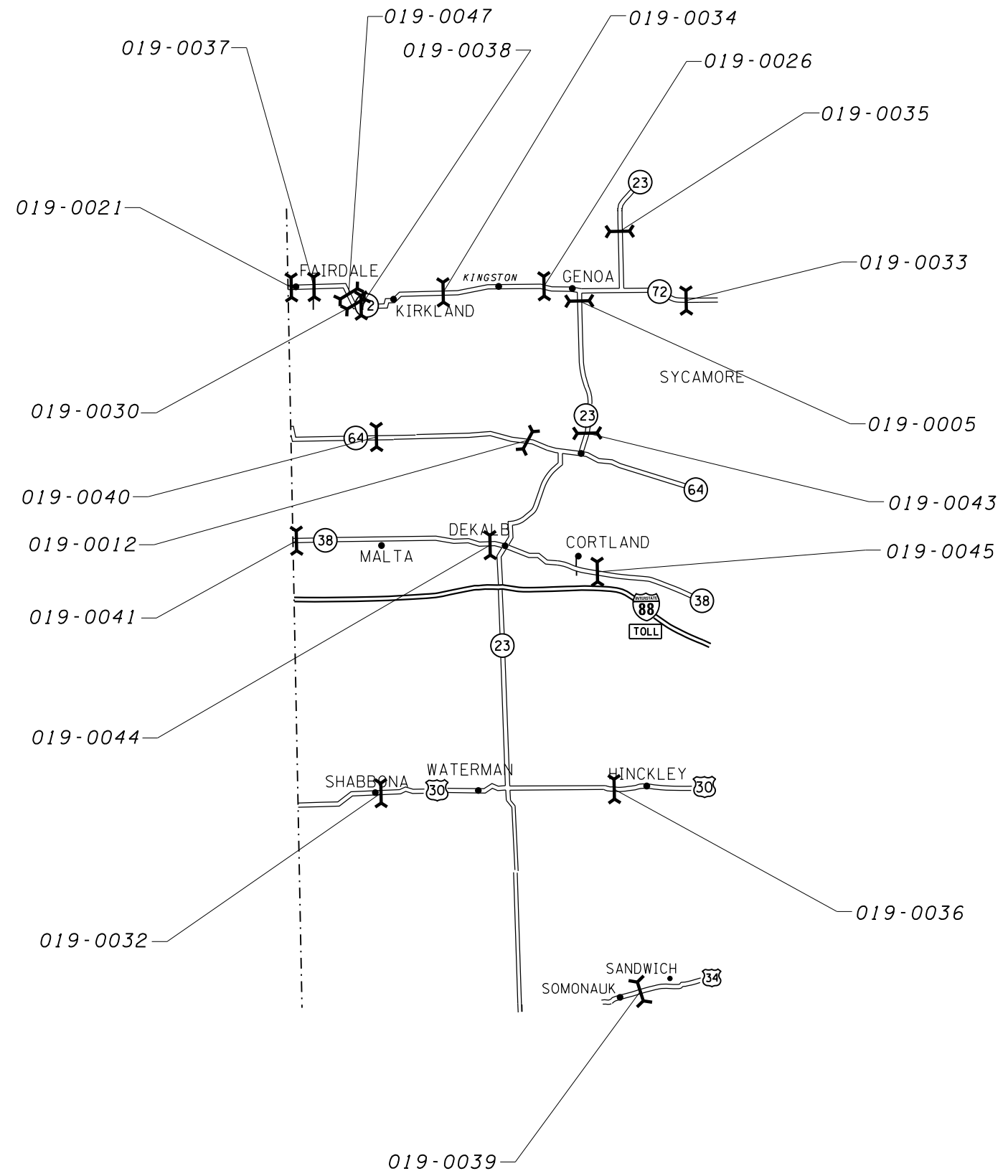
* STRUCTURE HAS EXISTING PCC OVERLAY, ADDITIONAL DRYING TIME BY BE REQUIRED

FILE NAME =	USER NAME = duncanbd	DESIGNED -	REVISED -	STATE OF ILLINOIS DEPARTMENT OF TRANSPORTATION	SEALING SCHEDULE				F.A. RTE.	SECTION	COUNTY	TOTAL SHEETS	SHEET NO.
et:\pw\work\p1dot\duncanbd\0324748\0366C70-sh1-schedule.dgn		DRAWN -	REVISED -		SCALE:	SHEET	OF	SHEETS	STA.	TO	STA.	VAR	ILLINOIS FED. AID PROJECT
		CHECKED -	REVISED -									•	
		DATE -	REVISED -									•D3 BRIDGE DECK SEALING 2014	CONTRACT NO. 66C70



BUREAU & PUTNAM

FILE NAME = c:\pwork\pwork\dot\duncanbd\8324748\036670-sh1-plan.dgn	USER NAME = duncanbd	DESIGNED -	REVISED -	STATE OF ILLINOIS DEPARTMENT OF TRANSPORTATION	BUREAU & PUTNAM COUNTIES LOCATION MAP			F.A. RTE.	SECTION	COUNTY	TOTAL SHEETS	SHEET NO.
	PLOT SCALE = 100.0000' / in.	CHECKED -	REVISED -					VAR	*	VARIOUS	11	7
PLOT DATE = 8/12/2013	DATE -	REVISED -	REVISED -	SCALE: SHEET NO. OF SHEETS STA. TO STA.			*D3 BRIDGE DECK SEALING 2014 CONTRACT NO. 66C70 ILLINOIS FED. AID PROJECT					



DEKALB

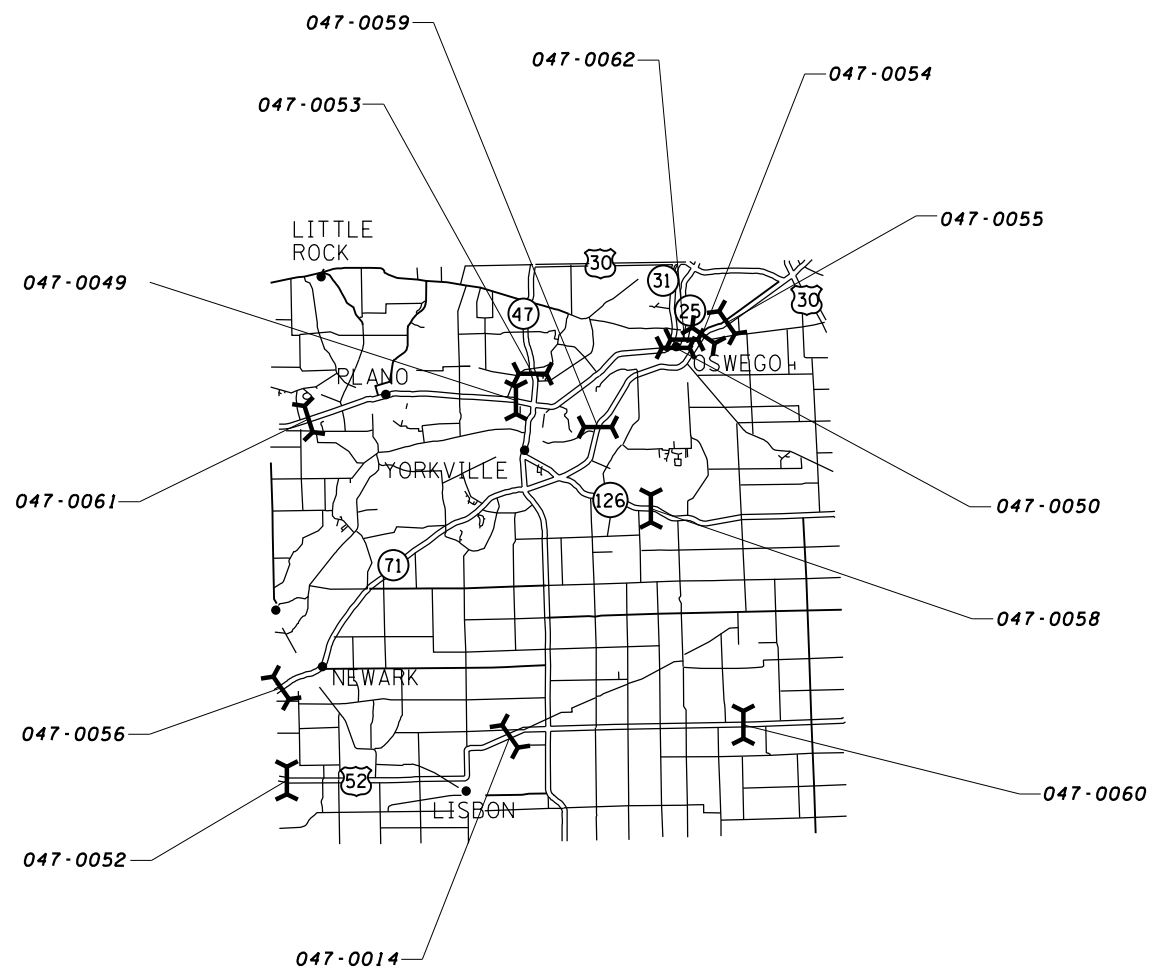
FILE NAME =	USER NAME = duncanbd	DESIGNED -	REVISED -
et:\pwork\pwork\dot\duncanbd\0324748\0366C70-shit-plan.dgn		DRAWN -	REVISED -
	PLOT SCALE = 100.0000' / in.	CHECKED -	REVISED -
	PLOT DATE = 8/12/2013	DATE -	REVISED -

**STATE OF ILLINOIS
DEPARTMENT OF TRANSPORTATION**

**DEKALB COUNTY
LOCATION MAP**

SCALE: SHEET OF SHEETS STA. TO STA.

F.A. RTE.	SECTION	COUNTY	TOTAL SHEETS	SHEET NO.
VAR	•	VARIOUS	11	8
•D3 BRIDGE DECK SEALING 2014			CONTRACT NO. 66C70	
ILLINOIS FED. AID PROJECT				



KENDALL

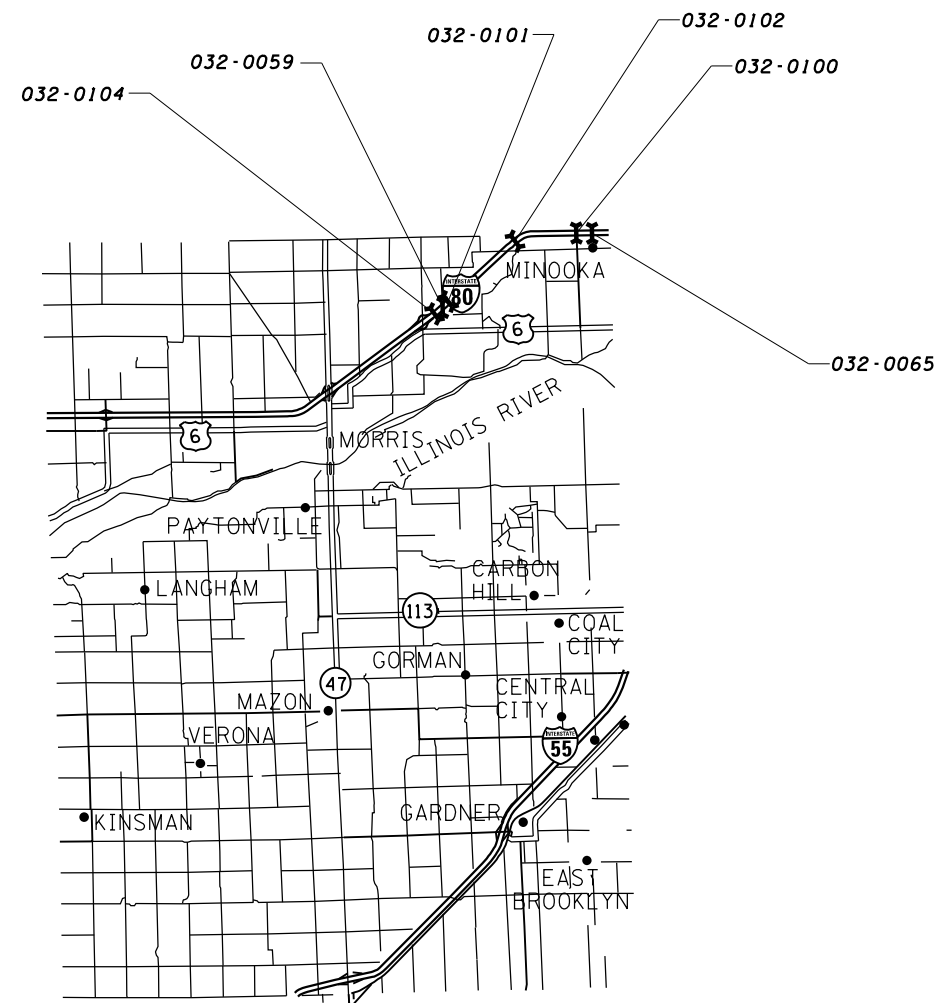
FILE NAME =	USER NAME = duncanbd	DESIGNED -	REVISED -
et:\pwork\pwork\dot\duncanbd\0324748\0366C70-sh1-plan.dgn		DRAWN -	REVISED -
	PLOT SCALE = 100.0000' / in.	CHECKED -	REVISED -
	PLOT DATE = 8/12/2013	DATE -	REVISED -

**STATE OF ILLINOIS
DEPARTMENT OF TRANSPORTATION**

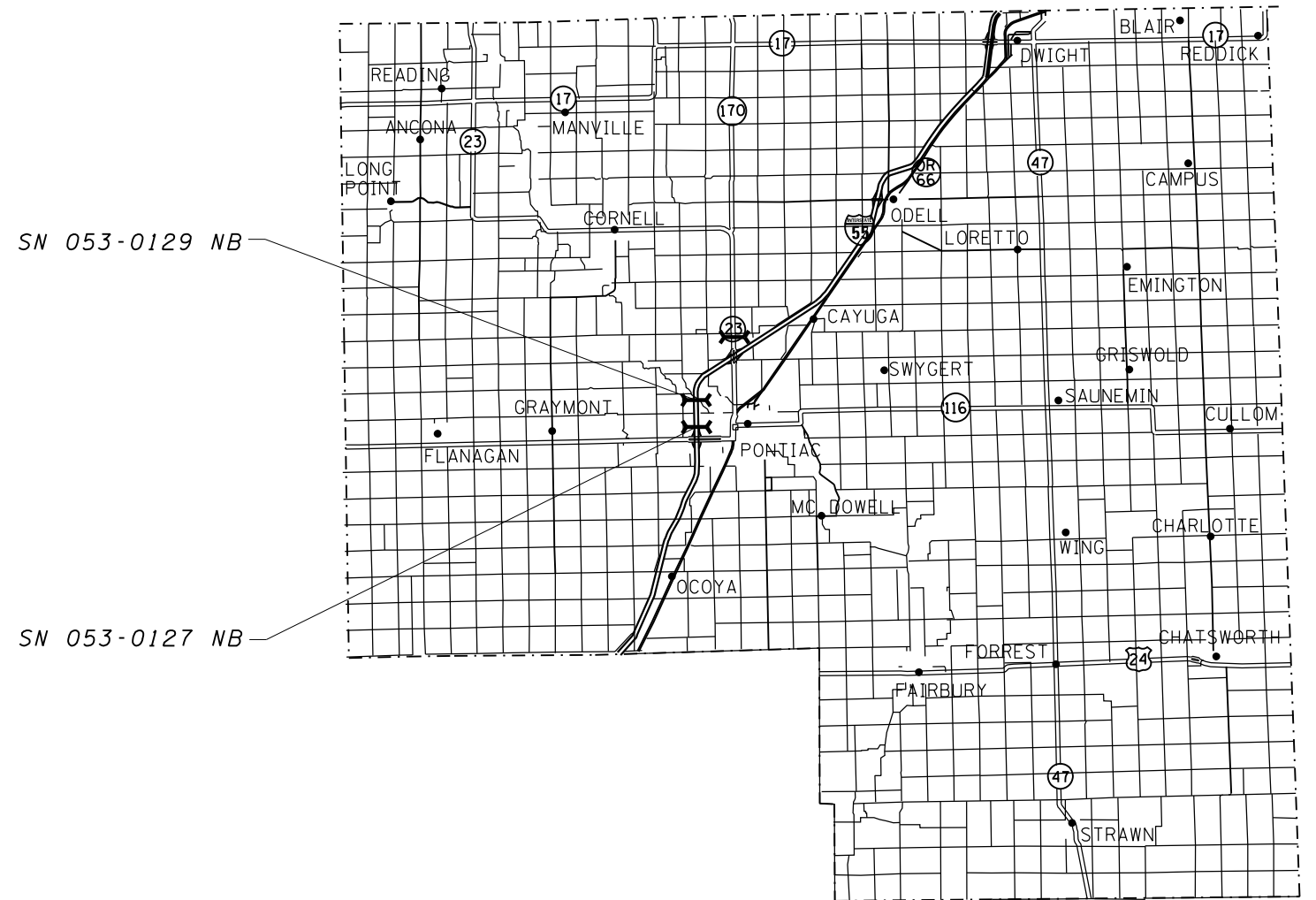
**KENDALL COUNTY
LOCATION MAP**

SCALE: SHEET OF SHEETS STA. TO STA.

F.A. RTE.	SECTION	COUNTY	TOTAL SHEETS	SHEET NO.
VAR	*	VARIOUS	11	9
*D3 BRIDGE DECK SEALING 2014			CONTRACT NO. 66C70	
ILLINOIS FED. AID PROJECT				



GRUNDY



LIVINGSTON COUNTY

FILE NAME =	USER NAME = duncanbd	DESIGNED -	REVISED -
et:\pwork\pwork\dot\duncanbd\0324748\036670-shit-plan.dgn		DRAWN -	REVISED -
	PLOT SCALE = 100.0000' / in.	CHECKED -	REVISED -
	PLOT DATE = 8/12/2013	DATE -	REVISED -

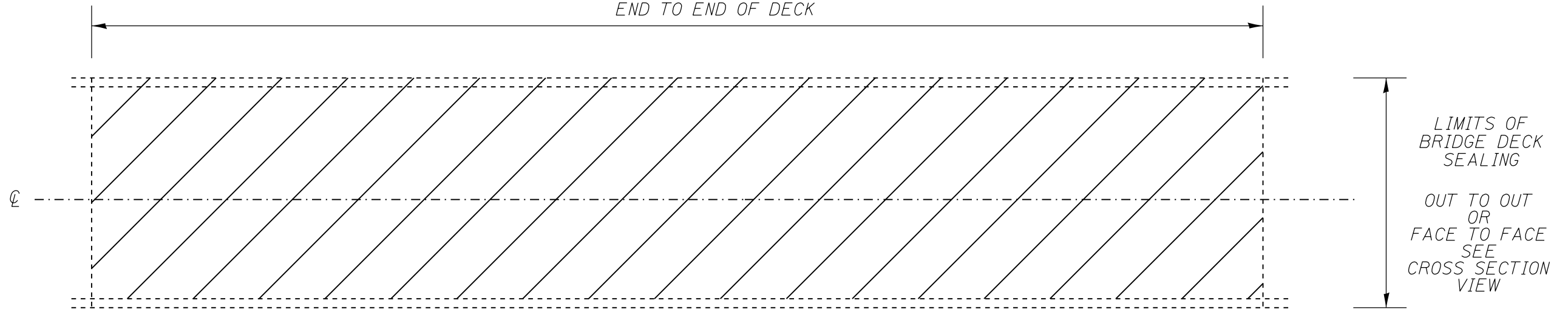
STATE OF ILLINOIS
DEPARTMENT OF TRANSPORTATION

GRUNDY & LIVINGSTON COUNTIES
LOCATION MAPS

SCALE: SHEET OF SHEETS STA. TO STA.

F.A. RTE.	SECTION	COUNTY	TOTAL SHEETS	SHEET NO.
VAR	.	VARIOUS	11	10
D3 BRIDGE DECK SEALING 2014			CONTRACT NO. 66C70	
ILLINOIS FED. AID PROJECT				

LIMITS OF BRIDGE DECK SEALING
END TO END OF DECK

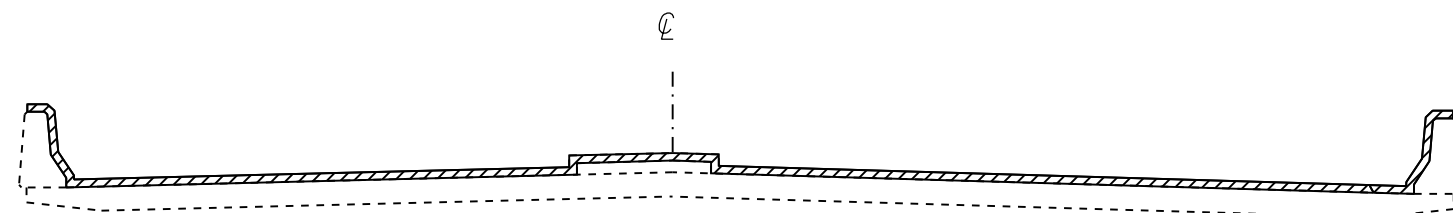


PLAN VIEW

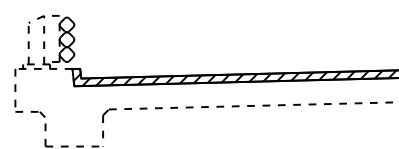
NOTE: BRIDGE APPROACH PAVEMENT SHALL NOT BE SEALED.

EXISTING PAVEMENT MARKINGS SHALL BE TEMPORARILY COVERED PRIOR TO APPLICATION OF THE DECK SURFACE TREATMENT, TO PREVENT THE MATERIAL FROM BEING APPLIED TO THE MARKINGS AND TO PROTECT THE REFLECTIVE PROPERTIES OF THE MARKINGS. THE TEMPORARY COVERING MATERIAL USED SHALL BE SUCH THAT IT WILL NOT AFFECT THE MARKING'S REFLECTIVITY WHEN REMOVED AFTER APPLICATION OF THE DECK SURFACE TREATMENT AND PRIOR TO OPENING TO TRAFFIC. COST INCLUDED WITH CONCRETE SEALER.

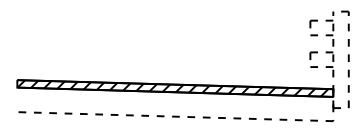
EXISTING EXPANSION JOINTS SHALL BE TEMPORARILY COVERED, PRIOR TO APPLICATION OF THE DECK SURFACE TREATMENT, TO PREVENT THE MATERIAL FROM BEING APPLIED TO THE JOINTS. THE TEMPORARY COVERING SHALL BE REMOVED AFTER THE APPLICATION OF THE DECK SURFACE TREATMENT AND PRIOR TO OPENING TO TRAFFIC. COST IS INCLUDED WITH CONCRETE SEALER.



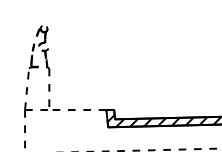
SECTION WITH
PARAPET AND MEDIAN



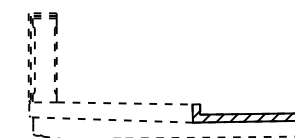
SECTION WITH CURB AND
TUBULAR THRIE BEAM RETROFIT RAIL



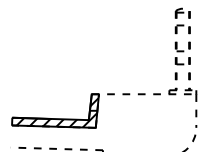
SECTION WITH
BRIDGE RAIL



CONCRETE AND
ALUMINUM RAILING



CONCRETE
BRIDGE RAILING




BRIDGE RAIL



SECTION WITH CONCRETE
AND ALUMINUM RAILING

VARIOUS SECTIONS WITH SIDEWALK AND/OR CONCRETE CURB

 AREA TO BE SEALED

NOT TO SCALE

FILE NAME =	USER NAME = duncanbd	DESIGNED -	REVISED -
et:\pwork\pwork\dot\duncanbd\0324748\036670-shit-details.dgn		DRAWN -	REVISED -
	PLOT SCALE = 100.0000' / in.	CHECKED -	REVISED -
	PLOT DATE = 8/12/2013	DATE -	REVISED -

STATE OF ILLINOIS
DEPARTMENT OF TRANSPORTATION

SEALING DETAILS

SCALE: SHEET NO. OF SHEETS STA. TO STA.

F.A. RTE.	SECTION	COUNTY	TOTAL SHEETS	SHEET NO.
VAR		VARIOUS	11	11
•D3 BRIDGE DECK SEALING 2014		CONTRACT NO. 66C70		
ILLINOIS FED. AID PROJECT				