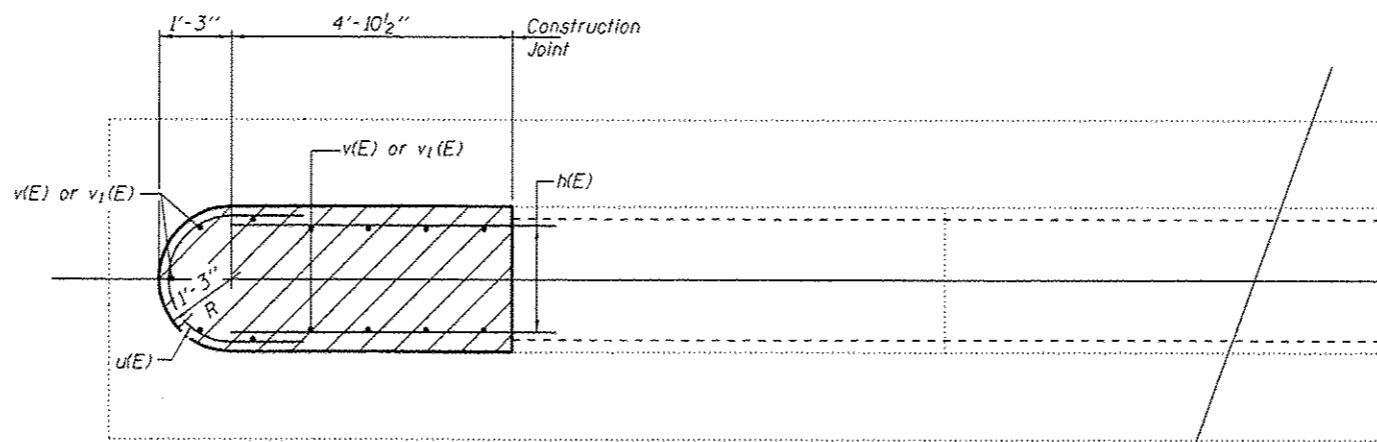


SECTION A-A

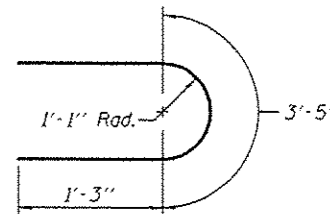
ELEVATION
(Looking North)



PLAN

Hatched areas indicate Concrete Removal and Concrete Structures.
Cross hatched areas indicate Structural Repair of Concrete (Depth \leq 5')

* Epoxy grout h(E) & v(E) bars in 9" min. holes according to Article 584 of the Standard Specifications.



BAR u(E)

BILL OF MATERIAL

Bar	No.	Size	Length	Shape
h(E)	18	#5	5'-8"	—
u(E)	9	#5	5'-11"	⊔
v(E)	13	#5	2'-3"	—
v1(E)	13	#5	8'-6"	—
Concrete Removal			Cu. Yd.	4.7
Concrete Structures			Cu. Yd.	4.7
Reinforcement Bars, Epoxy Coated			Pound	310
Structural Repair of Concrete (Depth \leq 5')			Sq. Ft.	24

** Dimensions are approximate. Actual areas to be repaired & quantity to be established in the field by the engineer.

DESIGNED *TLC*
CHECKED *SMR*
DRAWN *ballva*
CHECKED *TLC SMR*

EXAMINED *Timothy A. Auger*
PASSED *ACTING ENGINEER OF STRUCTURAL SERVICES*
ACTING ENGINEER OF BRIDGES AND STRUCTURES

DATE AUGUST 30, 2013
REVISED
REVISED

STATE OF ILLINOIS
DEPARTMENT OF TRANSPORTATION

PIER 1 REPAIR DETAILS
SN 053-0129

SHEET NO. 6 OF 7 SHEETS

F.A.I. RTE.	SECTION	COUNTY	TOTAL SHEETS	SHEET NO.
55	153-50-11-3	LIVINGSTON	15	14

CONTRACT NO. 66D16

ILLINOIS FED. AID PROJECT