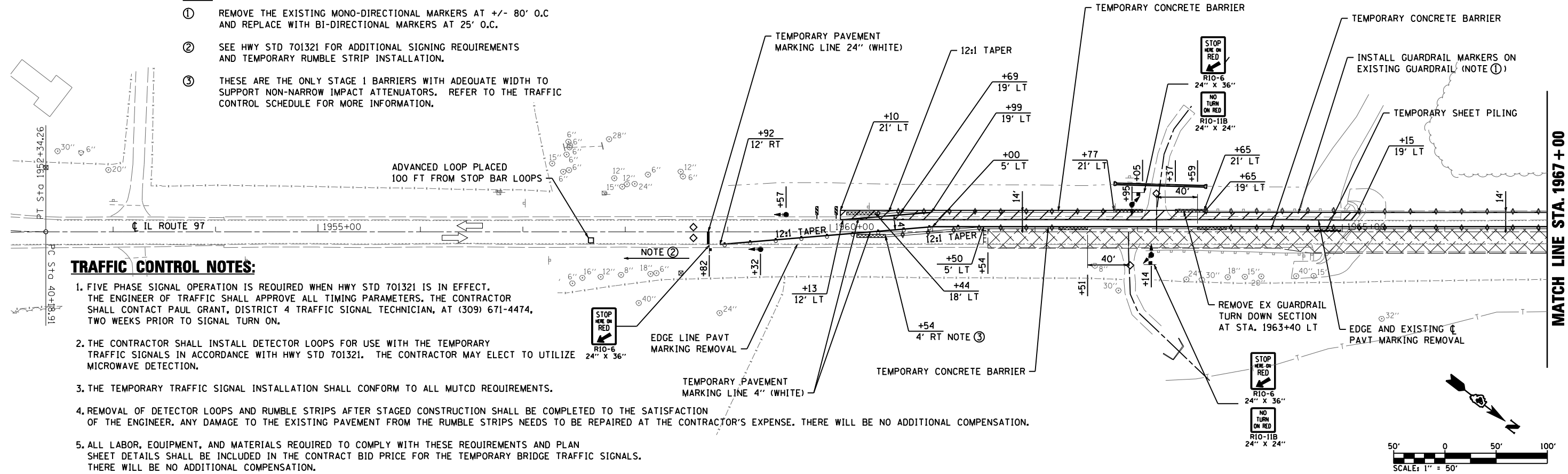


**NOTES:**

- ① REMOVE THE EXISTING MONO-DIRECTIONAL MARKERS AT +/- 80' O.C AND REPLACE WITH BI-DIRECTIONAL MARKERS AT 25' O.C.
- ② SEE HWY STD 701321 FOR ADDITIONAL SIGNING REQUIREMENTS AND TEMPORARY RUMBLE STRIP INSTALLATION.
- ③ THESE ARE THE ONLY STAGE 1 BARRIERS WITH ADEQUATE WIDTH TO SUPPORT NON-NARROW IMPACT ATTENUATORS. REFER TO THE TRAFFIC CONTROL SCHEDULE FOR MORE INFORMATION.

**TRAFFIC CONTROL NOTES:**

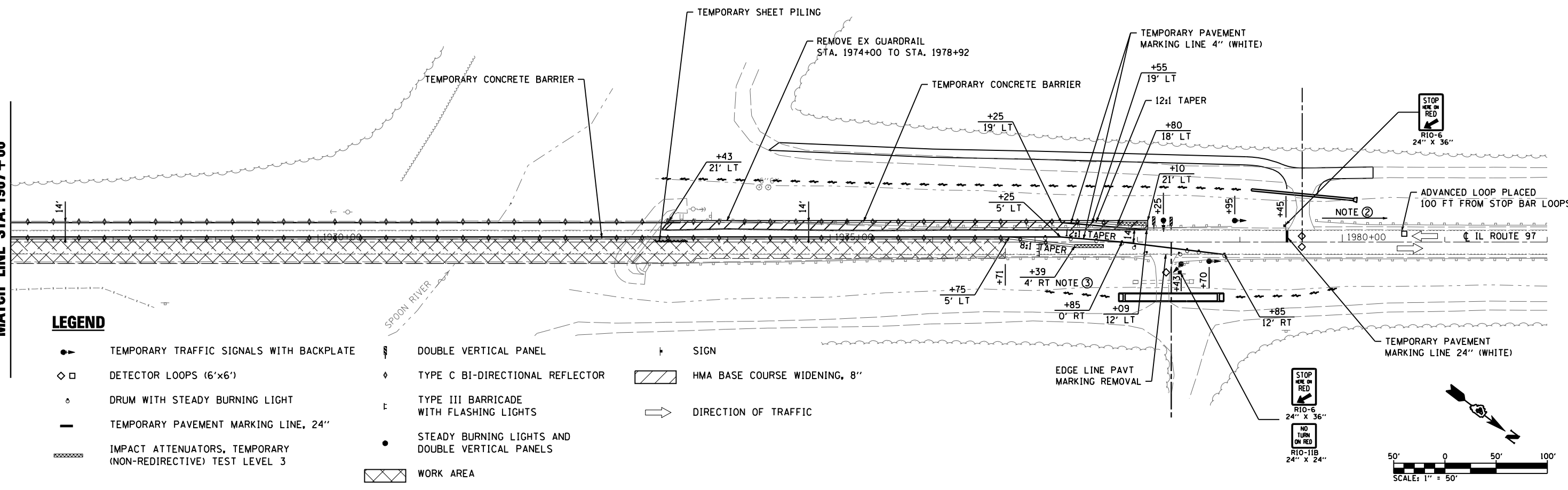
- 1. FIVE PHASE SIGNAL OPERATION IS REQUIRED WHEN HWY STD 701321 IS IN EFFECT. THE ENGINEER OF TRAFFIC SHALL APPROVE ALL TIMING PARAMETERS. THE CONTRACTOR SHALL CONTACT PAUL GRANT, DISTRICT 4 TRAFFIC SIGNAL TECHNICIAN, AT (309) 671-4474, TWO WEEKS PRIOR TO SIGNAL TURN ON.
- 2. THE CONTRACTOR SHALL INSTALL DETECTOR LOOPS FOR USE WITH THE TEMPORARY TRAFFIC SIGNALS IN ACCORDANCE WITH HWY STD 701321. THE CONTRACTOR MAY ELECT TO UTILIZE MICROWAVE DETECTION.
- 3. THE TEMPORARY TRAFFIC SIGNAL INSTALLATION SHALL CONFORM TO ALL MUTCD REQUIREMENTS.
- 4. REMOVAL OF DETECTOR LOOPS AND RUMBLE STRIPS AFTER STAGED CONSTRUCTION SHALL BE COMPLETED TO THE SATISFACTION OF THE ENGINEER. ANY DAMAGE TO THE EXISTING PAVEMENT FROM THE RUMBLE STRIPS NEEDS TO BE REPAIRED AT THE CONTRACTOR'S EXPENSE. THERE WILL BE NO ADDITIONAL COMPENSATION.
- 5. ALL LABOR, EQUIPMENT, AND MATERIALS REQUIRED TO COMPLY WITH THESE REQUIREMENTS AND PLAN SHEET DETAILS SHALL BE INCLUDED IN THE CONTRACT BID PRICE FOR THE TEMPORARY BRIDGE TRAFFIC SIGNALS. THERE WILL BE NO ADDITIONAL COMPENSATION.



MATCH LINE STA. 1967 + 00

**LEGEND**

- TEMPORARY TRAFFIC SIGNALS WITH BACKPLATE
- ◇ DETECTOR LOOPS (6'x6')
- DRUM WITH STEADY BURNING LIGHT
- TEMPORARY PAVEMENT MARKING LINE, 24"
- ▨ IMPACT ATTENUATORS, TEMPORARY (NON-REDIRECTIVE) TEST LEVEL 3
- ▨ DOUBLE VERTICAL PANEL
- ◇ TYPE C BI-DIRECTIONAL REFLECTOR
- ⊠ TYPE III BARRICADE WITH FLASHING LIGHTS
- STEADY BURNING LIGHTS AND DOUBLE VERTICAL PANELS
- ▨ WORK AREA
- ⊠ SIGN
- ▨ HMA BASE COURSE WIDENING, 8"
- ➔ DIRECTION OF TRAFFIC



FILE NAME = D468759-sht-staging.dgn

USER NAME = default  
 PLOT TIME = 8:52:27 AM  
 PLOT SCALE = 100.0000' / IN.  
 PLOT DATE = 8/9/2013

DESIGNED - RGV  
 DRAWN - RGV  
 CHECKED - BPS  
 DATE -

REVISED -  
 REVISED -  
 REVISED -  
 REVISED -

**STATE OF ILLINOIS  
 DEPARTMENT OF TRANSPORTATION**

**STAGE 1 CONSTRUCTION & TRAFFIC CONTROL**

SCALE: 1"=50' SHEET 2 OF 6 SHEETS STA. TO STA.

|                           |             |        |              |           |
|---------------------------|-------------|--------|--------------|-----------|
| F.A.P. RTE.               | SECTION     | COUNTY | TOTAL SHEETS | SHEET NO. |
| 626                       | (44-B-1) BR | KNOX   | 122          | 23        |
| CONTRACT NO. 68759        |             |        |              |           |
| ILLINOIS FED. AID PROJECT |             |        |              |           |