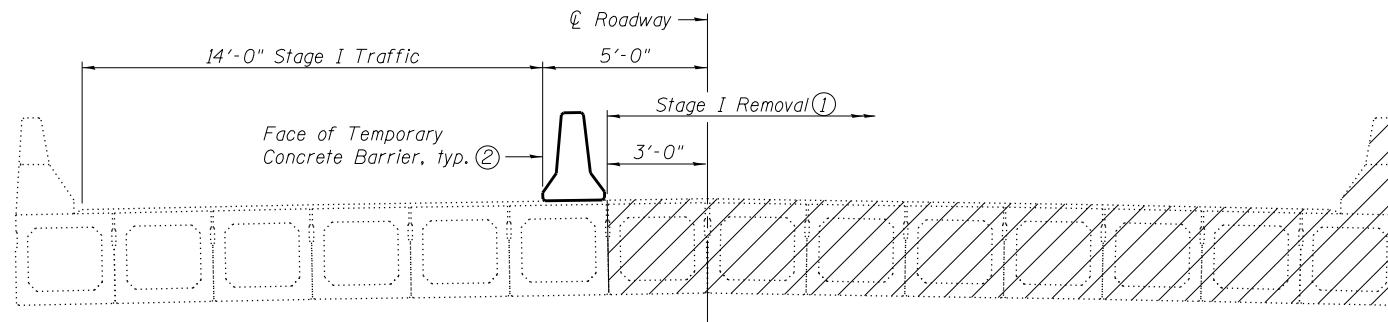
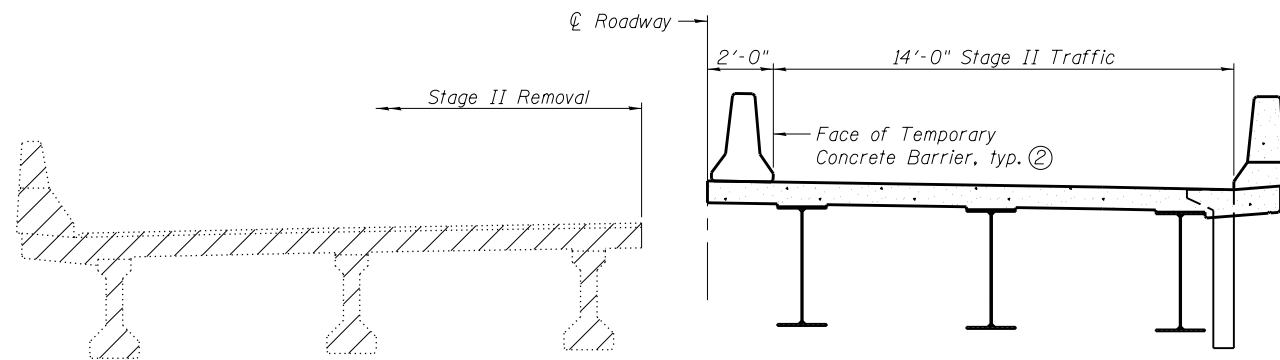


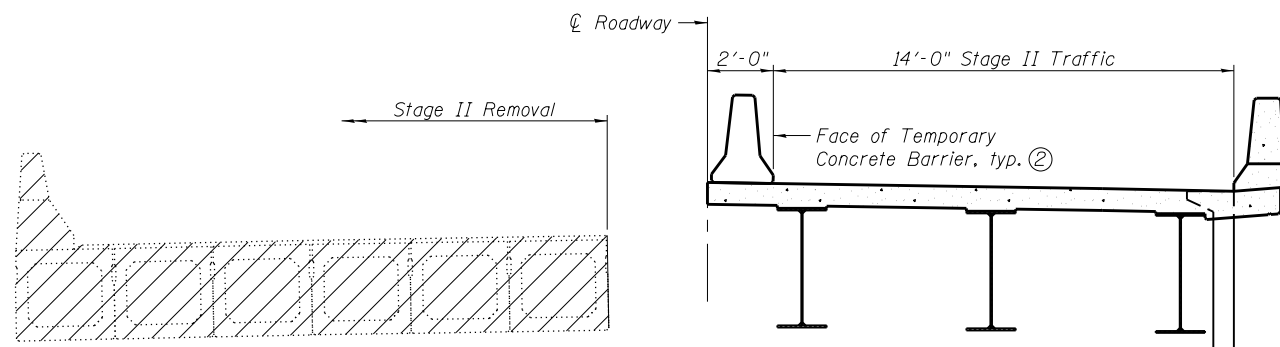
STAGE I REMOVAL
(Existing spans 1 thru 12 and 15)



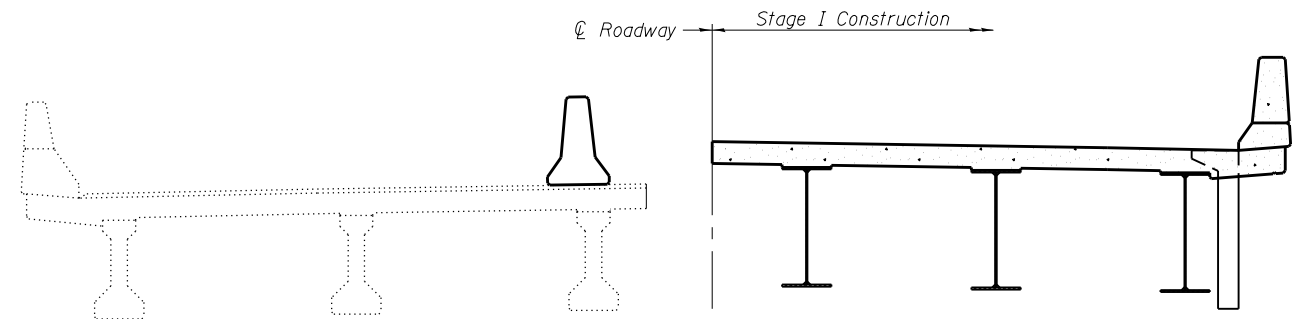
STAGE I REMOVAL
(Existing spans 13 and 14)



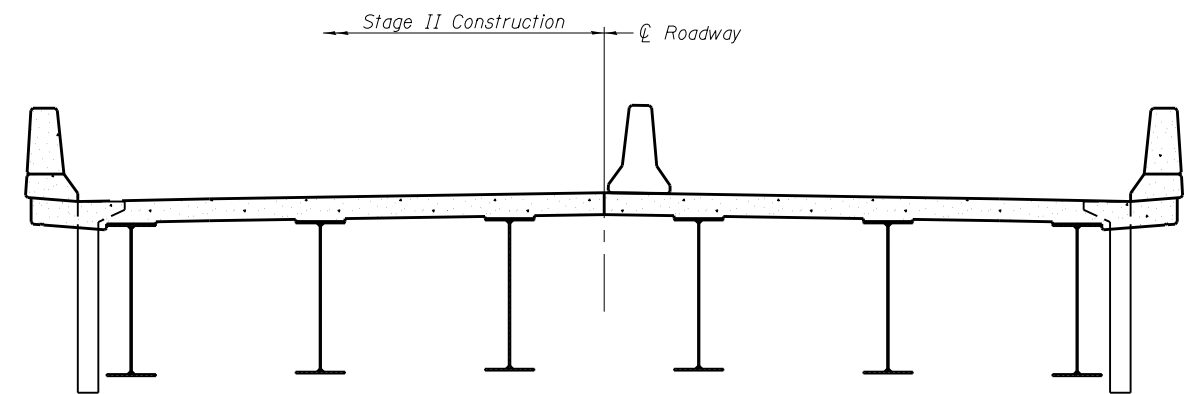
STAGE II REMOVAL
(Existing spans 1 thru 12 and 15)



STAGE II REMOVAL
(Existing spans 13 and 14)



STAGE I CONSTRUCTION (4)
(Showing existing spans 1 thru 12 and 15,
existing spans 13 and 14 similar)



STAGE II CONSTRUCTION (4)

Notes:

- ① Existing piers within the main channel shall only be removed to a height that allows adequate clearance for construction of the Stage I superstructure. The remainder of the pier shall be removed during Stage II removal.
- ② For details of Temporary Concrete Barrier, see sheet 6 of 62. See roadway plans for quantity of Temporary Concrete Barrier and related traffic control.
- ③ All views looking north.
- ④ For winter shutdown details, see roadway plans.

USER NAME =	DESIGNED -	REVISED
	CHECKED -	REVISED
PLOT SCALE =	DRAWN - JAD	REVISED
PLOT DATE =	CHECKED - SJN	REVISED

F.A.P. RTE.	SECTION	COUNTY	TOTAL SHEETS	SHEET NO.
626	(44-B-1)BR	KNOX	122	34
CONTRACT NO. 68759				
ILLINOIS FED. AID PROJECT				